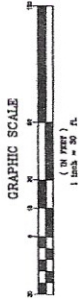
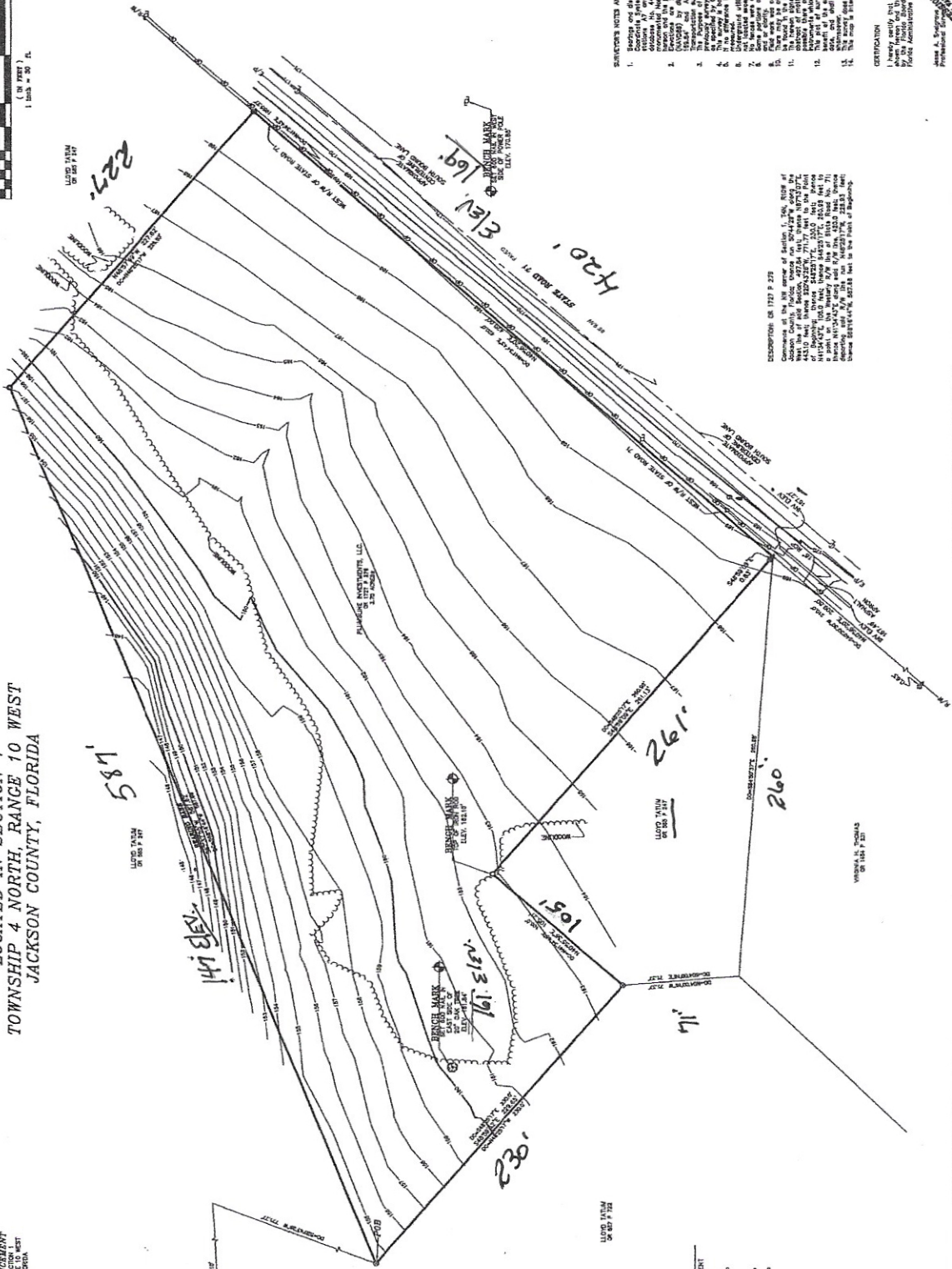


2945 Hwy 71 - MARIANNA

A BOUNDARY & TOPOGRAPHIC SURVEY
FOR MATT HEDGES
LOCATED IN SECTION 1
TOWNSHIP 4 NORTH, RANGE 10 WEST
JACKSON COUNTY, FLORIDA



POINT OF COMMENCEMENT
TOWNSHIP 4 NORTH, RANGE 10 WEST
JACKSON COUNTY, FLORIDA
NOT RECORDED



- LEGEND**
- 1. FINISH OF CONCRETE FOUNDATION
 - 2. 1/2" DIA. IRON ROD WITH CAP
 - 3. 1/2" DIA. IRON ROD WITH CAP
 - 4. 1/2" DIA. IRON ROD WITH CAP
 - 5. 1/2" DIA. IRON ROD WITH CAP
 - 6. 1/2" DIA. IRON ROD WITH CAP
 - 7. 1/2" DIA. IRON ROD WITH CAP
 - 8. 1/2" DIA. IRON ROD WITH CAP
 - 9. 1/2" DIA. IRON ROD WITH CAP
 - 10. 1/2" DIA. IRON ROD WITH CAP
 - 11. 1/2" DIA. IRON ROD WITH CAP
 - 12. 1/2" DIA. IRON ROD WITH CAP
 - 13. 1/2" DIA. IRON ROD WITH CAP
 - 14. 1/2" DIA. IRON ROD WITH CAP
 - 15. 1/2" DIA. IRON ROD WITH CAP
 - 16. 1/2" DIA. IRON ROD WITH CAP
 - 17. 1/2" DIA. IRON ROD WITH CAP
 - 18. 1/2" DIA. IRON ROD WITH CAP
 - 19. 1/2" DIA. IRON ROD WITH CAP
 - 20. 1/2" DIA. IRON ROD WITH CAP
 - 21. 1/2" DIA. IRON ROD WITH CAP
 - 22. 1/2" DIA. IRON ROD WITH CAP
 - 23. 1/2" DIA. IRON ROD WITH CAP
 - 24. 1/2" DIA. IRON ROD WITH CAP
 - 25. 1/2" DIA. IRON ROD WITH CAP
 - 26. 1/2" DIA. IRON ROD WITH CAP
 - 27. 1/2" DIA. IRON ROD WITH CAP
 - 28. 1/2" DIA. IRON ROD WITH CAP
 - 29. 1/2" DIA. IRON ROD WITH CAP
 - 30. 1/2" DIA. IRON ROD WITH CAP
 - 31. 1/2" DIA. IRON ROD WITH CAP
 - 32. 1/2" DIA. IRON ROD WITH CAP
 - 33. 1/2" DIA. IRON ROD WITH CAP
 - 34. 1/2" DIA. IRON ROD WITH CAP
 - 35. 1/2" DIA. IRON ROD WITH CAP
 - 36. 1/2" DIA. IRON ROD WITH CAP
 - 37. 1/2" DIA. IRON ROD WITH CAP
 - 38. 1/2" DIA. IRON ROD WITH CAP
 - 39. 1/2" DIA. IRON ROD WITH CAP
 - 40. 1/2" DIA. IRON ROD WITH CAP
 - 41. 1/2" DIA. IRON ROD WITH CAP
 - 42. 1/2" DIA. IRON ROD WITH CAP
 - 43. 1/2" DIA. IRON ROD WITH CAP
 - 44. 1/2" DIA. IRON ROD WITH CAP
 - 45. 1/2" DIA. IRON ROD WITH CAP
 - 46. 1/2" DIA. IRON ROD WITH CAP
 - 47. 1/2" DIA. IRON ROD WITH CAP
 - 48. 1/2" DIA. IRON ROD WITH CAP
 - 49. 1/2" DIA. IRON ROD WITH CAP
 - 50. 1/2" DIA. IRON ROD WITH CAP
 - 51. 1/2" DIA. IRON ROD WITH CAP
 - 52. 1/2" DIA. IRON ROD WITH CAP
 - 53. 1/2" DIA. IRON ROD WITH CAP
 - 54. 1/2" DIA. IRON ROD WITH CAP
 - 55. 1/2" DIA. IRON ROD WITH CAP
 - 56. 1/2" DIA. IRON ROD WITH CAP
 - 57. 1/2" DIA. IRON ROD WITH CAP
 - 58. 1/2" DIA. IRON ROD WITH CAP
 - 59. 1/2" DIA. IRON ROD WITH CAP
 - 60. 1/2" DIA. IRON ROD WITH CAP
 - 61. 1/2" DIA. IRON ROD WITH CAP
 - 62. 1/2" DIA. IRON ROD WITH CAP
 - 63. 1/2" DIA. IRON ROD WITH CAP
 - 64. 1/2" DIA. IRON ROD WITH CAP
 - 65. 1/2" DIA. IRON ROD WITH CAP
 - 66. 1/2" DIA. IRON ROD WITH CAP
 - 67. 1/2" DIA. IRON ROD WITH CAP
 - 68. 1/2" DIA. IRON ROD WITH CAP
 - 69. 1/2" DIA. IRON ROD WITH CAP
 - 70. 1/2" DIA. IRON ROD WITH CAP
 - 71. 1/2" DIA. IRON ROD WITH CAP
 - 72. 1/2" DIA. IRON ROD WITH CAP
 - 73. 1/2" DIA. IRON ROD WITH CAP
 - 74. 1/2" DIA. IRON ROD WITH CAP
 - 75. 1/2" DIA. IRON ROD WITH CAP
 - 76. 1/2" DIA. IRON ROD WITH CAP
 - 77. 1/2" DIA. IRON ROD WITH CAP
 - 78. 1/2" DIA. IRON ROD WITH CAP
 - 79. 1/2" DIA. IRON ROD WITH CAP
 - 80. 1/2" DIA. IRON ROD WITH CAP
 - 81. 1/2" DIA. IRON ROD WITH CAP
 - 82. 1/2" DIA. IRON ROD WITH CAP
 - 83. 1/2" DIA. IRON ROD WITH CAP
 - 84. 1/2" DIA. IRON ROD WITH CAP
 - 85. 1/2" DIA. IRON ROD WITH CAP
 - 86. 1/2" DIA. IRON ROD WITH CAP
 - 87. 1/2" DIA. IRON ROD WITH CAP
 - 88. 1/2" DIA. IRON ROD WITH CAP
 - 89. 1/2" DIA. IRON ROD WITH CAP
 - 90. 1/2" DIA. IRON ROD WITH CAP
 - 91. 1/2" DIA. IRON ROD WITH CAP
 - 92. 1/2" DIA. IRON ROD WITH CAP
 - 93. 1/2" DIA. IRON ROD WITH CAP
 - 94. 1/2" DIA. IRON ROD WITH CAP
 - 95. 1/2" DIA. IRON ROD WITH CAP
 - 96. 1/2" DIA. IRON ROD WITH CAP
 - 97. 1/2" DIA. IRON ROD WITH CAP
 - 98. 1/2" DIA. IRON ROD WITH CAP
 - 99. 1/2" DIA. IRON ROD WITH CAP
 - 100. 1/2" DIA. IRON ROD WITH CAP

REVISIONS

NO.	DATE	DESCRIPTION
1	10/15/23	INITIAL SURVEY
2	11/15/23	REVISIONS TO BOUNDARY
3	12/15/23	REVISIONS TO TOPOGRAPHY
4	01/15/24	REVISIONS TO BOUNDARY
5	02/15/24	REVISIONS TO TOPOGRAPHY
6	03/15/24	REVISIONS TO BOUNDARY
7	04/15/24	REVISIONS TO TOPOGRAPHY
8	05/15/24	REVISIONS TO BOUNDARY
9	06/15/24	REVISIONS TO TOPOGRAPHY
10	07/15/24	REVISIONS TO BOUNDARY
11	08/15/24	REVISIONS TO TOPOGRAPHY
12	09/15/24	REVISIONS TO BOUNDARY
13	10/15/24	REVISIONS TO TOPOGRAPHY
14	11/15/24	REVISIONS TO BOUNDARY
15	12/15/24	REVISIONS TO TOPOGRAPHY
16	01/15/25	REVISIONS TO BOUNDARY
17	02/15/25	REVISIONS TO TOPOGRAPHY
18	03/15/25	REVISIONS TO BOUNDARY
19	04/15/25	REVISIONS TO TOPOGRAPHY
20	05/15/25	REVISIONS TO BOUNDARY
21	06/15/25	REVISIONS TO TOPOGRAPHY
22	07/15/25	REVISIONS TO BOUNDARY
23	08/15/25	REVISIONS TO TOPOGRAPHY
24	09/15/25	REVISIONS TO BOUNDARY
25	10/15/25	REVISIONS TO TOPOGRAPHY
26	11/15/25	REVISIONS TO BOUNDARY
27	12/15/25	REVISIONS TO TOPOGRAPHY
28	01/15/26	REVISIONS TO BOUNDARY
29	02/15/26	REVISIONS TO TOPOGRAPHY
30	03/15/26	REVISIONS TO BOUNDARY
31	04/15/26	REVISIONS TO TOPOGRAPHY
32	05/15/26	REVISIONS TO BOUNDARY
33	06/15/26	REVISIONS TO TOPOGRAPHY
34	07/15/26	REVISIONS TO BOUNDARY
35	08/15/26	REVISIONS TO TOPOGRAPHY
36	09/15/26	REVISIONS TO BOUNDARY
37	10/15/26	REVISIONS TO TOPOGRAPHY
38	11/15/26	REVISIONS TO BOUNDARY
39	12/15/26	REVISIONS TO TOPOGRAPHY
40	01/15/27	REVISIONS TO BOUNDARY
41	02/15/27	REVISIONS TO TOPOGRAPHY
42	03/15/27	REVISIONS TO BOUNDARY
43	04/15/27	REVISIONS TO TOPOGRAPHY
44	05/15/27	REVISIONS TO BOUNDARY
45	06/15/27	REVISIONS TO TOPOGRAPHY
46	07/15/27	REVISIONS TO BOUNDARY
47	08/15/27	REVISIONS TO TOPOGRAPHY
48	09/15/27	REVISIONS TO BOUNDARY
49	10/15/27	REVISIONS TO TOPOGRAPHY
50	11/15/27	REVISIONS TO BOUNDARY
51	12/15/27	REVISIONS TO TOPOGRAPHY
52	01/15/28	REVISIONS TO BOUNDARY
53	02/15/28	REVISIONS TO TOPOGRAPHY
54	03/15/28	REVISIONS TO BOUNDARY
55	04/15/28	REVISIONS TO TOPOGRAPHY
56	05/15/28	REVISIONS TO BOUNDARY
57	06/15/28	REVISIONS TO TOPOGRAPHY
58	07/15/28	REVISIONS TO BOUNDARY
59	08/15/28	REVISIONS TO TOPOGRAPHY
60	09/15/28	REVISIONS TO BOUNDARY
61	10/15/28	REVISIONS TO TOPOGRAPHY
62	11/15/28	REVISIONS TO BOUNDARY
63	12/15/28	REVISIONS TO TOPOGRAPHY
64	01/15/29	REVISIONS TO BOUNDARY
65	02/15/29	REVISIONS TO TOPOGRAPHY
66	03/15/29	REVISIONS TO BOUNDARY
67	04/15/29	REVISIONS TO TOPOGRAPHY
68	05/15/29	REVISIONS TO BOUNDARY
69	06/15/29	REVISIONS TO TOPOGRAPHY
70	07/15/29	REVISIONS TO BOUNDARY
71	08/15/29	REVISIONS TO TOPOGRAPHY
72	09/15/29	REVISIONS TO BOUNDARY
73	10/15/29	REVISIONS TO TOPOGRAPHY
74	11/15/29	REVISIONS TO BOUNDARY
75	12/15/29	REVISIONS TO TOPOGRAPHY
76	01/15/30	REVISIONS TO BOUNDARY
77	02/15/30	REVISIONS TO TOPOGRAPHY
78	03/15/30	REVISIONS TO BOUNDARY
79	04/15/30	REVISIONS TO TOPOGRAPHY
80	05/15/30	REVISIONS TO BOUNDARY
81	06/15/30	REVISIONS TO TOPOGRAPHY
82	07/15/30	REVISIONS TO BOUNDARY
83	08/15/30	REVISIONS TO TOPOGRAPHY
84	09/15/30	REVISIONS TO BOUNDARY
85	10/15/30	REVISIONS TO TOPOGRAPHY
86	11/15/30	REVISIONS TO BOUNDARY
87	12/15/30	REVISIONS TO TOPOGRAPHY
88	01/15/31	REVISIONS TO BOUNDARY
89	02/15/31	REVISIONS TO TOPOGRAPHY
90	03/15/31	REVISIONS TO BOUNDARY
91	04/15/31	REVISIONS TO TOPOGRAPHY
92	05/15/31	REVISIONS TO BOUNDARY
93	06/15/31	REVISIONS TO TOPOGRAPHY
94	07/15/31	REVISIONS TO BOUNDARY
95	08/15/31	REVISIONS TO TOPOGRAPHY
96	09/15/31	REVISIONS TO BOUNDARY
97	10/15/31	REVISIONS TO TOPOGRAPHY
98	11/15/31	REVISIONS TO BOUNDARY
99	12/15/31	REVISIONS TO TOPOGRAPHY
100	01/15/32	REVISIONS TO BOUNDARY

DATE	REVISIONS	COMPUTED BY	INTICE	PROJECT	LOCATION	DATE	CLIENT
		J. SNELGROVE	AN	PLUMBLINE STATE ROAD 71 TRACT	SID 1, 1/4, 1/4	MARCH 1, 2022	MATT HEDGES
		A. MATHEWS	AN	BOUNDARY AND TOPOGRAPHIC SURVEY	JACKSON COUNTY, FLORIDA	22-506-01	
		J. SNELGROVE	AN		SCALE	1"=30'	SHEET NO.
							1 OF 1

SNELGROVE
Surveying & Mapping, Inc.
PROFESSIONAL SURVEYING AND LAND DEVELOPMENT SERVICES
10000 W. STATE ROAD 71, SUITE 100, JACKSONVILLE, FLORIDA 32218
904.724.1111
WWW.SNELGROVE.COM