

# 6131 SOUTHWEST BLVD, SUITE 101

BENBROOK, TEXAS 76132

## EXAMPLE OFFICE FLOORPLAN



## EXAMPLE MEDICAL FLOORPLAN



**FLOOR PLAN** | 1  
**SCALE** 1/4" = 1' - 0" | P2

The information provided herein was obtained from sources believed reliable; however, Transwestern makes no guarantees, warranties or representations as to the completeness of accuracy thereof. The presentation of this property is submitted subject to errors, omissions, change of price or conditions, prior to sale or lease, or withdrawal without notice. Copyright © 2025 Transwestern.

### Leasing Information:

**Jason Harrell, MBA, CCIM®**

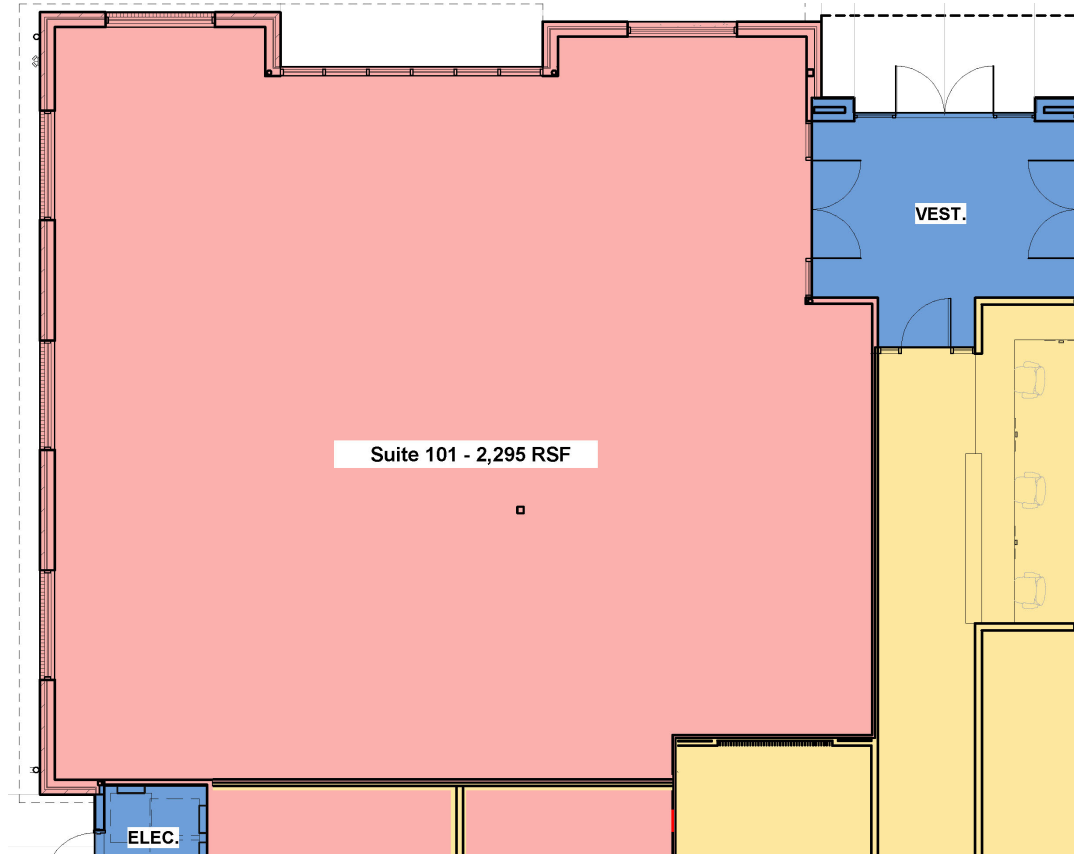
817.266.3103

Jason.Harrell@transwestern.com

# 6131 SOUTHWEST BLVD, SUITE 101

BENBROOK, TEXAS 76132

## CURRENT FLOORPLAN SHELL CONDITION



**FLOOR PLAN** | 1  
**SCALE** 1/8" = 1' - 0" | P1

The information provided herein was obtained from sources believed reliable; however, Transwestern makes no guarantees, warranties or representations as to the completeness of accuracy thereof. The presentation of this property is submitted subject to errors, omissions, change of price or conditions, prior to sale or lease, or withdrawal without notice. Copyright © 2025 Transwestern.

### Leasing Information:

**Jason Harrell, MBA, CCIM®**

817.266.3103

Jason.Harrell@transwestern.com