



WWW.GOODMANREALESTATE.COM
216.381.8200

STEELYARD COMMONS MULTI-TENANT BUILDING

Cleveland, Ohio



HIGHLIGHTS

- **AVAILABLE:**
 - 2,500 SF former retail space
 - 35' frontage
 - Prime endcap location
 - 1,536 SF unfinished space
 - 21' frontage
 - Space can be finished per your requirements
 - Tenant improvement allowance available for construction
- Join successful co-tenants
 - Five Guys open since 2012
 - Penn Station open since 2012
 - Bright Now Dental open since 2018
- CUSTOMERS: 8 million+ customers annually
- TRAFFIC: Traffic on Steelyard Drive reaches over 5 million vehicles annually
- HIGHWAY ACCESS: Directly from I-71 and SR 176
- DAYTIME POPULATION: Over 225,000 employees within a 5-mile radius

DEMOGRAPHICS

	3 MILE	5 MILE	7 MILE
POPULATION			
2030 Projection	135,830	306,136	538,860
2025 Estimate	131,577	307,799	547,575
INCOME			
2025 Average	\$69,734	\$66,962	\$73,109
2025 Median	\$46,996	\$48,176	\$52,478
DAYTIME POPULATION			
2025 Employees	76,583	229,139	351,628

LEASING INFORMATION

www.goodmanrealestate.com
216.381.8200

CLEVELAND

THE OFFICES OF LEGACY VILLAGE
25333 CEDAR ROAD, SUITE 305
CLEVELAND, OH 44124

COLUMBUS

100 W OLD WILSON BRIDGE ROAD,
SUITE 207
WORTHINGTON, OH 43085

ZACK SOGOLOFF

zack@goodmanrealestate.com

SETH MARKS

seth@goodmanrealestate.com

TRISTAN PALMIERI

tristan@goodmanrealestate.com



LEASING INFORMATION

www.goodmanrealestate.com

216.381.8200

ZACK SOGOLOFF

zack@goodmanrealestate.com

SETH MARKS

seth@goodmanrealestate.com

TRISTAN PALMIERI

tristan@goodmanrealestate.com

STEELYARD COMMONS MULTI-TENANT BUILDING

Cleveland, Ohio





LEASING INFORMATION

www.goodmanrealestate.com

216.381.8200

ZACK SOGOLOFF

zack@goodmanrealestate.com

SETH MARKS

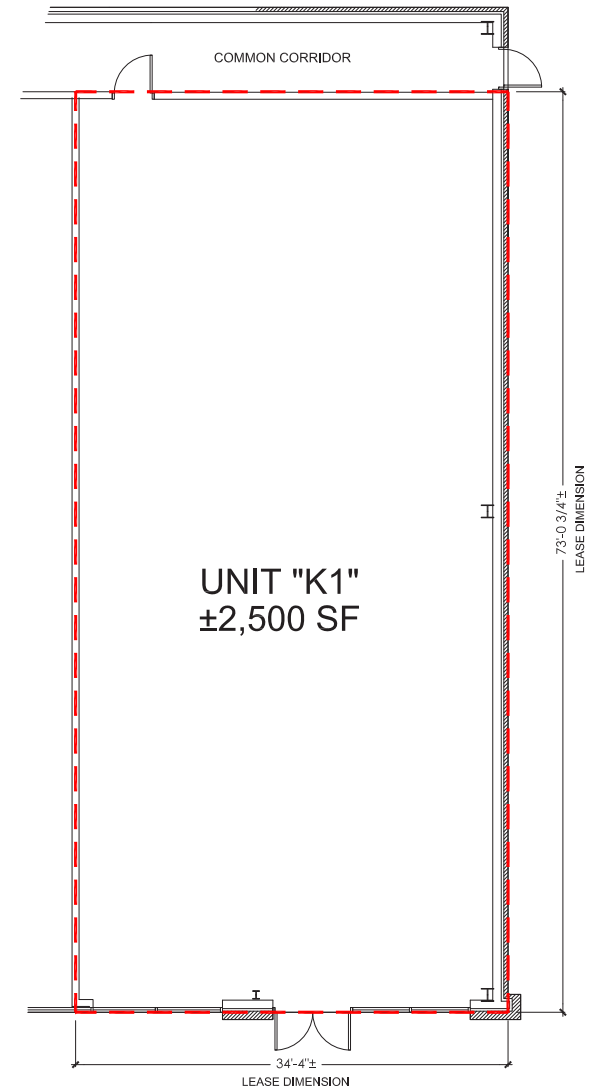
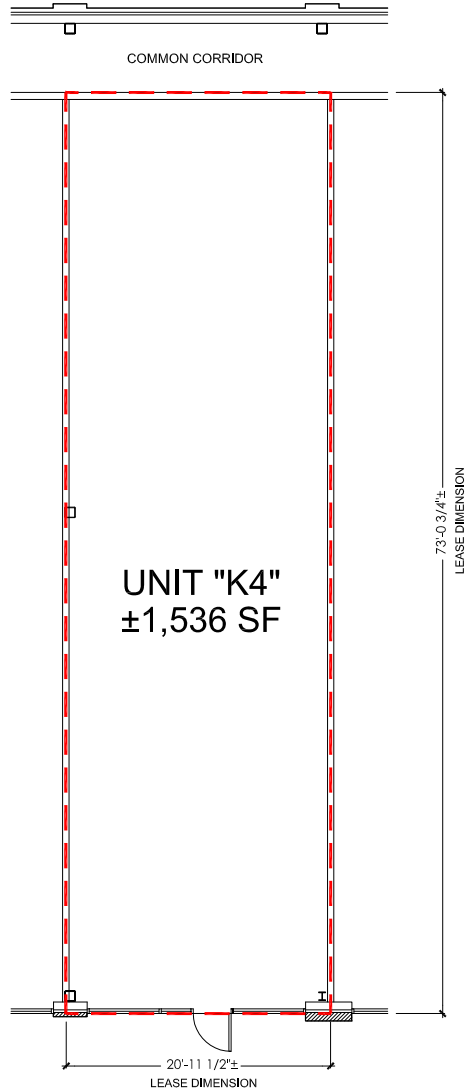
seth@goodmanrealestate.com

TRISTAN PALMIERI

tristan@goodmanrealestate.com

STEELYARD COMMONS MULTI-TENANT BUILDING

Cleveland, Ohio



SHEET LOD	Date: 05/02/18	UNIT K4 LOD	FIRST INTERSTATE PROPERTIES, LTD.
	Approx. Scale: None		
	SVC-Bldg K LOD.dwg		
STEELYARD COMMONS SHOPPING CENTER CLEVELAND, OHIO		The Offices at Legacy Village 25333 Cedar Road, Suite 300 Lyndhurst, Ohio 44124	

SHEET LOD	Date: 09/01/2023	UNIT K1 LOD	FIRST INTERSTATE PROPERTIES, LTD.
	Approx. Scale: None		
	SVC-Bldg K LOD.dwg		
STEELYARD COMMONS SHOPPING CENTER CLEVELAND, OHIO		The Offices at Legacy Village 25333 Cedar Road, Suite 300 Lyndhurst, Ohio 44124	

THE INFORMATION ABOVE HAS BEEN OBTAINED FROM SOURCES BELIEVED TO BE RELIABLE. GOODMAN REAL ESTATE SERVICES GROUP LLC AND ITS AGENTS, ASSOCIATES, AND EMPLOYEES MAKE NO GUARANTEE, WARRANTY OR REPRESENTATION ABOUT IT. ALL IMAGES CONTAINED HEREIN ARE THE PROPERTY OF GOODMAN REAL ESTATE SERVICES GROUP LLC AND SHALL NOT BE DUPLICATED OR REPRODUCED WITHOUT EXPRESS WRITTEN CONSENT OF GOODMAN REAL ESTATE SERVICES GROUP LLC. YOU ACKNOWLEDGE THAT, AS REQUIRED BY THE STATE OF OHIO, YOU HAVE RECEIVED THE CONSUMER GUIDE TO AGENCY RELATIONSHIPS.