

# FOR LEASE Medical / Professional Building

100 NE Missouri Rd., Lee's Summit MO



Signage Opportunity

TENANT SIGNAGE HERE

Lease Rate - \$25psf

- +/-14,949 RSF Two-Story Medical / Professional Building situated on a 1.42-Acre Site. Constructed in 2006
- +/-2,966 SF Available for Lease - Ideal for Owner-User or Investment Opportunity
- Anchored by Davita Dialysis
- Located Directly Across from St. Luke's East Hospital at the I-470 & NE Douglas Interchange
- Surrounded by a Strong Mix of Restaurants, Hotels, and Retail Amenities Including Jose Pepper's, Panera Bread, Whataburger, Starbucks, Hampton Inn, B&B Theatres, and more!

Kayla Hutchings

c: 913.850.9810 | o: 913.747.3325

e: kayla@fishmancommercial.com

Justin Kaufmann

c: 816.786.9131 | o: 913.747.3340


e: justin@fishmancommercial.com

#### Disclaimer

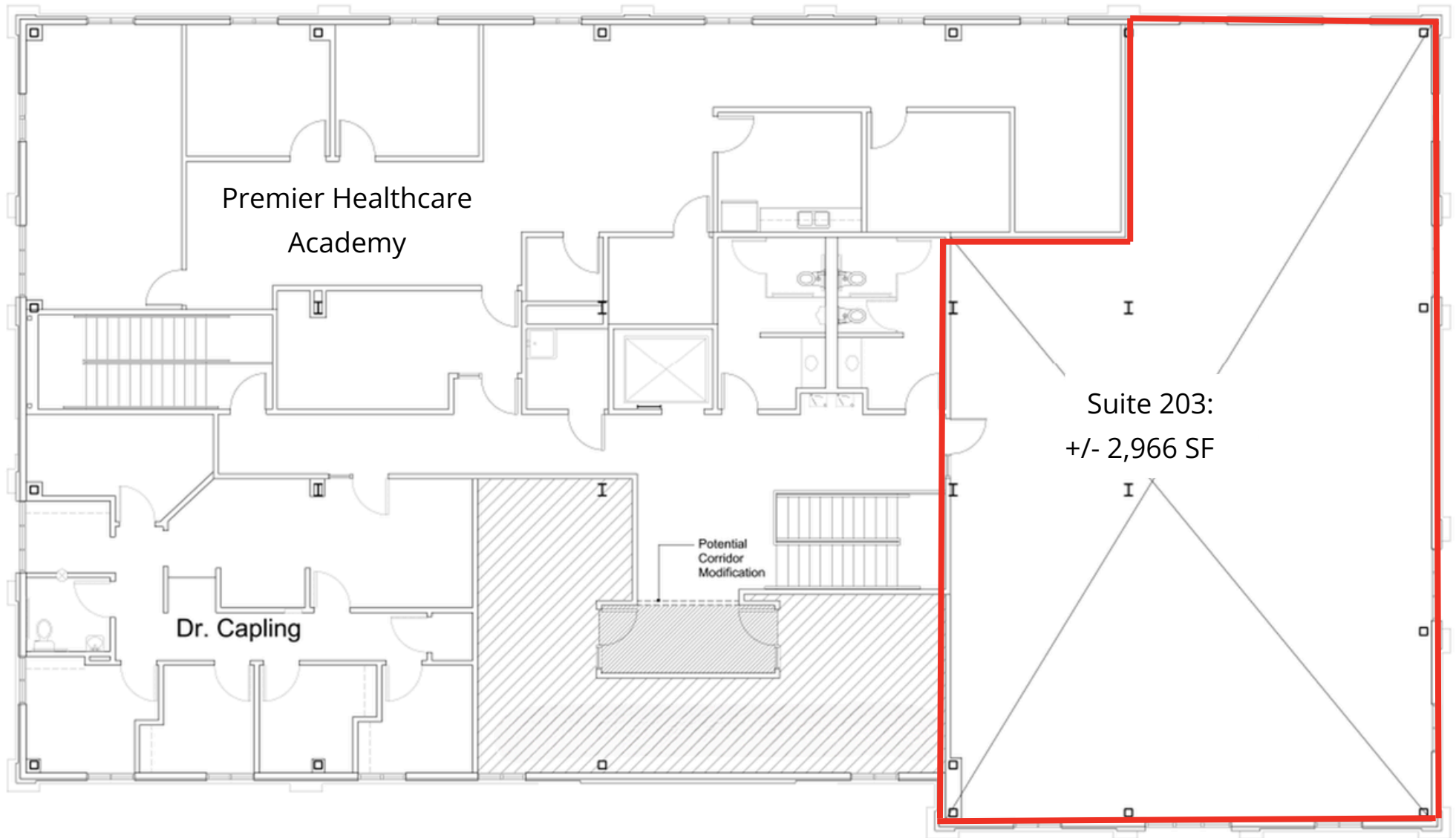
Information furnished regarding property is from sources deemed reliable but no warranty or representation is made as to the accuracy thereof and same is submitted subject to errors, omissions, prior sale of lease or withdrawal without notice.

# Aerial & Demographics



Total Population		Household Income (Avg.)		Median Age		Daytime Population	
	5-mile 99,740		5-mile \$125,716		5-mile 40.6		5-mile 99,740
	10-mile 356,303		10-mile \$102,976		10-mile 39.6		10-mile 356,303
	20-mile 1,424,609		20-mile \$109,414		20-mile 38.4		20-mile 1,424,609

# Available Space Floorplans



# Suite 203 Interior



# FOR LEASE Medical / Professional Building

100 NE Missouri Rd, Lees Summit, MO



## LEASING CONTACTS

**Justin Kaufmann**

c: 816.786.9131 | o: 913.747.3340  
e: justin@fishmancommercial.com

**Kayla Hutchings**

c: 913.850.9810 | o: 913.747.3325  
e: kayla@fishmancommercial.com

Information furnished regarding property is from sources deemed reliable but no warranty or representation is made as to the accuracy thereof and same is submitted subject to errors, omissions, prior sale of lease or withdrawal without notice.