

2 MEZZANINE LEVEL EQUIPMENT PLAN
SCALE: 3/16"=1'-0"

EQUIPMENT PLAN LEGEND:

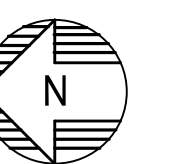
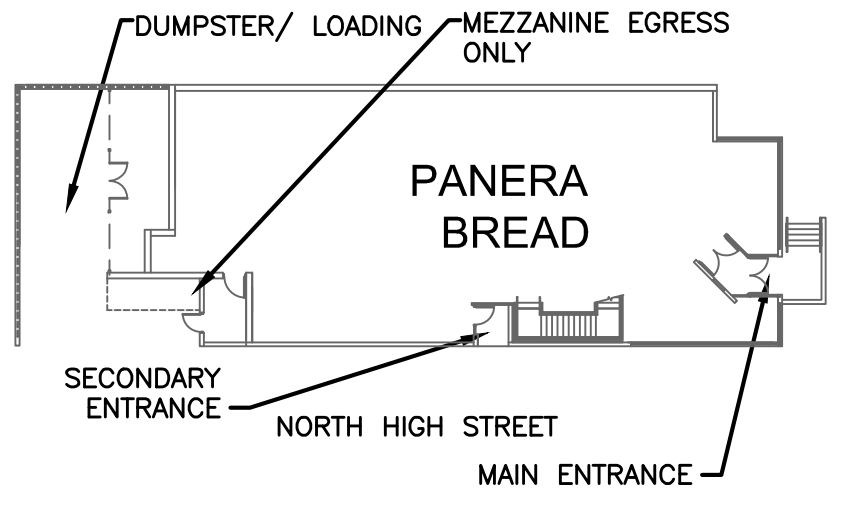
- XXX → ROOM NUMBER SYMBOL
- SG-IDEN → SIGNAGE IDENTIFICATION SYMBOL
- EQ → EQUIPMENT IDENTIFICATION SYMBOL
- ST-IDEN → STEEL IDENTIFICATION SYMBOL
- WD-IDEN → WOOD IDENTIFICATION SYMBOL
- RL → RELOCATION INDICATION, ADDED TO SYMBOLS
- FURN-ID → FURNITURE IDENTIFICATION SYMBOL
- DOOR → DOOR NUMBER SYMBOL

GENERAL NOTES:

- A. A&N REFRIGERATION IS RESPONSIBLE FOR SUPPLYING PIPE PORTALS (15X15 INSULATED BOX W/ PLASTIC TOP, KNOCKOUTS W/ RUBBER BOOTS) & 4x4 TREATED WOOD ROOF CURBS (U.N.C.) FOR ALL REFRIGERATION EQUIPMENT (COOLER & FREEZER COMPRESSORS & ICE MACHINE) AND PIPING TO THIS EQUIPMENT. THE GENERAL CONTRACTOR WILL COORDINATE REFRIGERATION EQUIPMENT LOCATIONS & CUT ROOF PENETRATIONS AND SET PIPE PORTALS & ROOF CURBS. THE G.C. WILL SET ALL REFRIGERATION EQUIPMENT & COMPRESSORS. G.C. SHALL HIRE LANDLORD ROOFING SUBCONTRACTOR TO FLASH ALL PENETRATIONS AND ROOF CURBS. ELECTRICAL WIRING BY ELECTRICAL CONTRACTOR. SEE MECHANICAL DRAWINGS.
- B. REFRIGERANT PIPING NOTE: CONTRACTOR TO MAKE NECESSARY ADJUSTMENTS FOR EQUIPMENT ON FIRST FLOOR AS ROOF SURFACE IS APPROX. 30' ABOVE FIRST FLOOR F.F. SEE ROOF PLAN (A-1.1) FOR CONDENSING UNIT LOCATIONS IN RELATION TO VERTICAL CHASE.
- C. ALL TABLE HEIGHTS ARE 30" HIGH.

KEYED NOTES: INDICATED BY ◊ SYMBOL

- ◊ 1-1 WOOD SHELF TO MATCH BOOTH BACK FINISH AND HEIGHT



1 KEYPLAN
SCALE: NTS

WILLEY STREET (US 119)