

RETAIL SPACE FOR LEASE

VILLAGE MARKETPLACE



1432-1560 EAST DIXIE DRIVE, AHSEBORO, NC 27203



Grant Bosworth | (704) 765-4620 | grant@onealliancecompanies.com

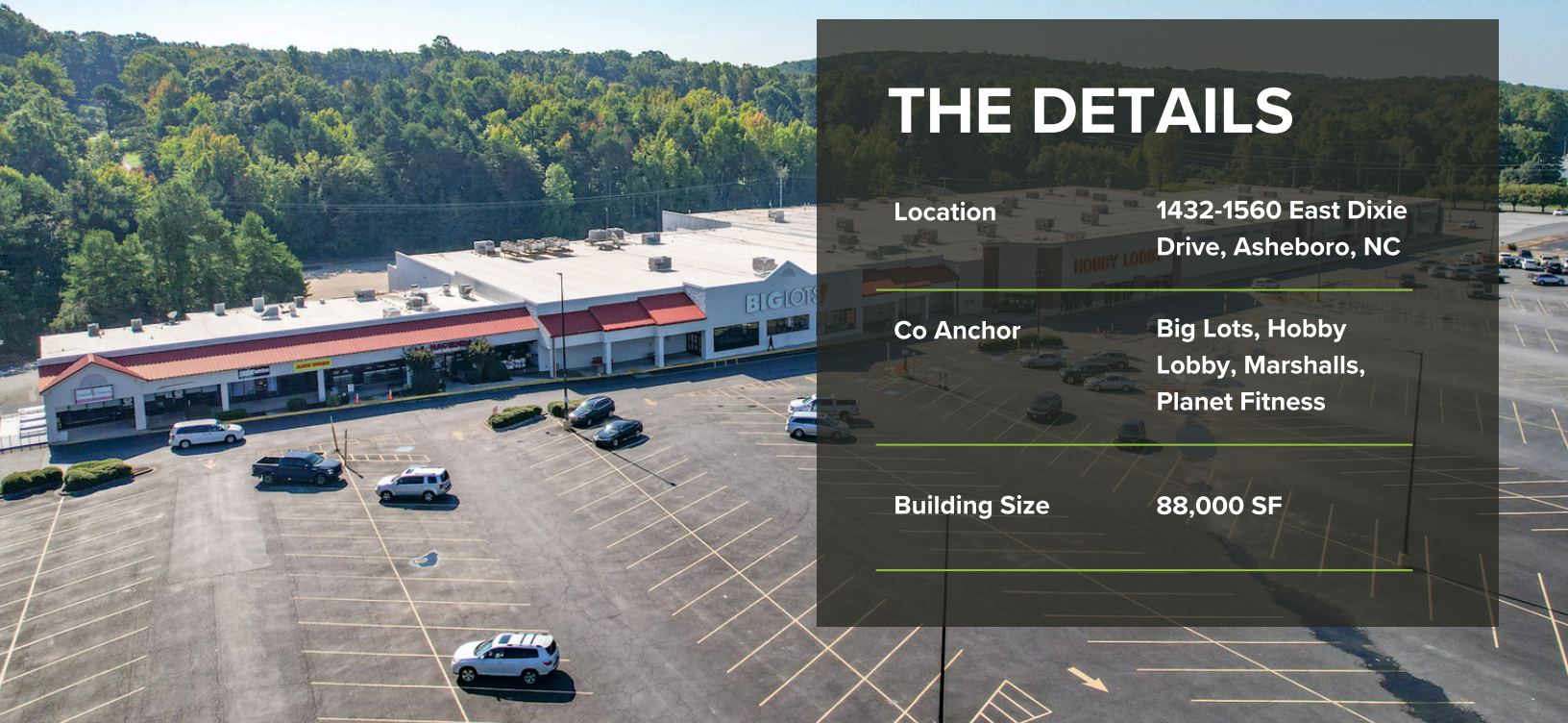
ABOUT THE PROPERTY

RETAIL SPACE FOR LEASE

- Adjacent to Asheboro Mall (Belk, Ross, Cinemark, Five Below, Books-A-Million, Dunham's Sports)
- National retailers nearby: Walmart, Lowe's, Aldi, Chick-fil-A, Chipotle, Food Lion, Tractor Supply
- Strong demographics and steady growth in Randolph County, with over 148,000 residents and a balanced economic base across manufacturing, education, and retail sectors
- Convenient access to U.S. 64, NC 42, and I-73/I-74 (Piedmont Triad region)
- Prime visibility on Asheboro's dominant retail corridor
- Multiple high-traffic national co-tenants
- Strong signage and pylon visibility options



VILLAGE MARKETPLACE



THE DETAILS

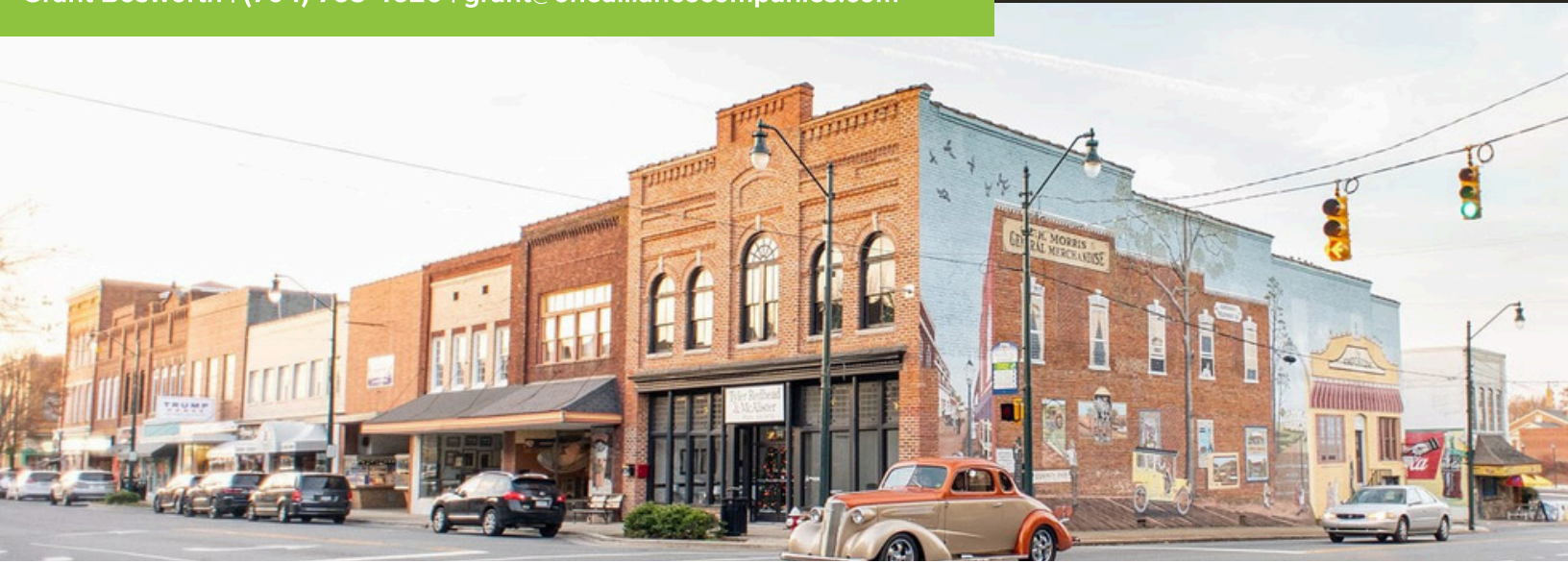
Location 1432-1560 East Dixie Drive, Asheboro, NC

Co Anchor Big Lots, Hobby Lobby, Marshalls, Planet Fitness

Building Size 88,000 SF

AVAILABLE SPACE

Suite	SF	Floor	Rent	Lease Type	Notes
1520-D	+/- 1,500	First	\$15/SF	NNN	Spaces can be combined for a total of 9,000 SF
1520-EF	+/- 1,500	First	\$15/SF	NNN	Spaces can be combined for a total of 9,000 SF
1520-GL	+/- 6,000	First	\$15/SF	NNN	Spaces can be combined for a total of 9,000 SF



ABOUT THE AREA

ASHEBORO, NC

Asheboro is a city in central North Carolina and serves as the county seat of Randolph County. Founded in 1796, it was named after Samuel Ashe, a Revolutionary War figure and former governor of North Carolina. Today, Asheboro has a population of just over 27,000 residents, making it a mid-sized community within the Piedmont Triad region, which includes nearby cities like Greensboro and High Point.

One of Asheboro’s most defining features is that it is home to the North Carolina Zoo, the largest natural habitat zoo in the world. This major attraction draws visitors from across the state and beyond, significantly contributing to the local economy and tourism industry. The city has even earned the nickname “Zoo City” because of this landmark.

In terms of transportation and connectivity, Asheboro is well-positioned along major routes like U.S. Highway 64 and U.S. 220, with access to Interstate 73/74. These corridors provide convenient connections to larger cities such as Raleigh, Greensboro, and Charlotte, making Asheboro a strategic location for both residents and businesses.

Overall, Asheboro offers a mix of small-town charm, natural beauty, and economic relevance within central North Carolina. Its combination of historical roots, outdoor landscapes, and attractions like the state zoo make it a unique and important city in the region.

