

# FOR LEASE

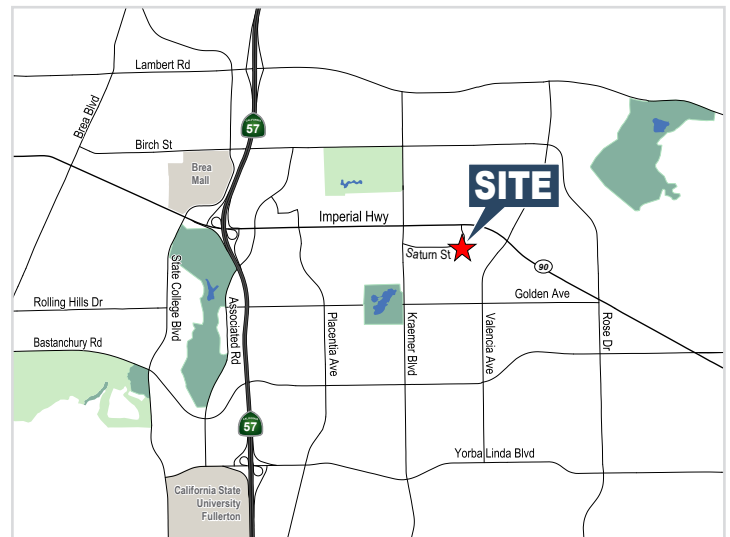
## COUNTRY CLUB INDUSTRIAL PARK

2950-2980 Saturn Street, Brea, CA



### PROPERTY DETAILS

- No CAM Charges (Landlord Pays for Water and Trash)
- Fully Fire Sprinklered Units
- ±16' Warehouse Clearance
- Ground Level Loading in all Units
- Abundant Surface Free Parking
- Professionally Managed Business Park
- Close Proximity to Brea Regional Mall, 2 Retail Power Centers, 7 Hotels and 45 Restaurants



For More Information or to Schedule a Tour Please Contact:



**JASON DIROCCO**  
714.935.2305  
JDiRocco@voitco.com  
Lic. #01842301

**Voit**  
REAL ESTATE SERVICES

# FOR LEASE

## COUNTRY CLUB INDUSTRIAL PARK

2950-2980 Saturn Street, Brea, CA



### AVAILABILITIES

Address	Suite	Unit SF	Office SF	Warehouse SF	GL	Price	Comments
2970 Saturn Street	A	± 800	± 0	± 800	1	\$1.55	All Warehouse, 1 Restroom

**\*NO CAM FEES**

For More Information or to Schedule a Tour Please Contact:



**JASON DIROCCO**  
714.935.2305  
JDiRocco@voitco.com  
Lic. #01842301

**Voit**  
REAL ESTATE SERVICES

2400 E. Katella Avenue, Suite 750, Anaheim, CA 92805 | 714.978-7880 • 714.978.9431 Fax  
Licensed as Real Estate Salesperson by the CA Bur of Real Estate. The information contained herein has been obtained from sources we deem reliable.  
While we have no reason to doubt its accuracy, we do not guarantee it. ©2018 Voit Real Estate Services, Inc. All Rights Reserved. License #01991785

[www.VoitCo.com](http://www.VoitCo.com)