



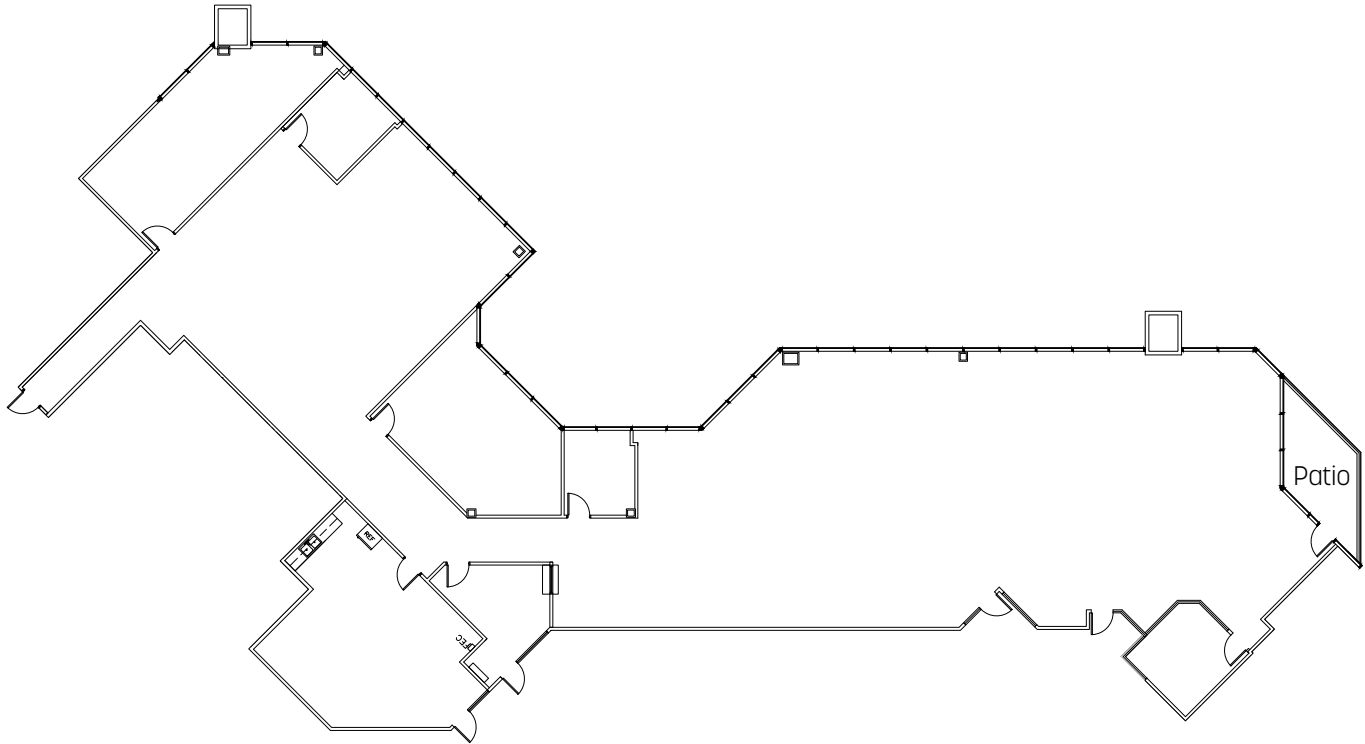
CAMELWEST

1951-2001 W Camelback Rd
Phoenix, AZ

FLOOR PLAN

Suite E300

±9,045 RSF
1951 W Camelback Rd



MICHAEL MARSH
Vice President
DIR +1 602 222 5177
michael.marsh@colliers.com

MATT BANISZEWSKI
Vice President
DIR +1 602 222 5176
matt.baniszewski@colliers.com



COLLIERS
2390 E Camelback Rd, Suite 100
Phoenix, AZ 85016
www.colliers.com/arizona

This document has been prepared by Colliers for advertising and general information only. Colliers makes no guarantees, representations or warranties of any kind, expressed or implied, regarding the information including, but not limited to, warranties of content, accuracy and reliability. Any interested party should undertake their own inquiries as to the accuracy of the information. Colliers excludes unequivocally all inferred or implied terms, conditions and warranties arising out of this document and excludes all liability for loss and damages arising there from. This publication is the copyrighted property of Colliers and /or its licensor(s). © 2025. All rights reserved. This communication is not intended to cause or induce breach of an existing listing agreement. Colliers International AZ, LLC.