

For Sublease

7010 Raggard Road
Louisville, KY 40216

Property Specifications

SPACE AVAILABLE

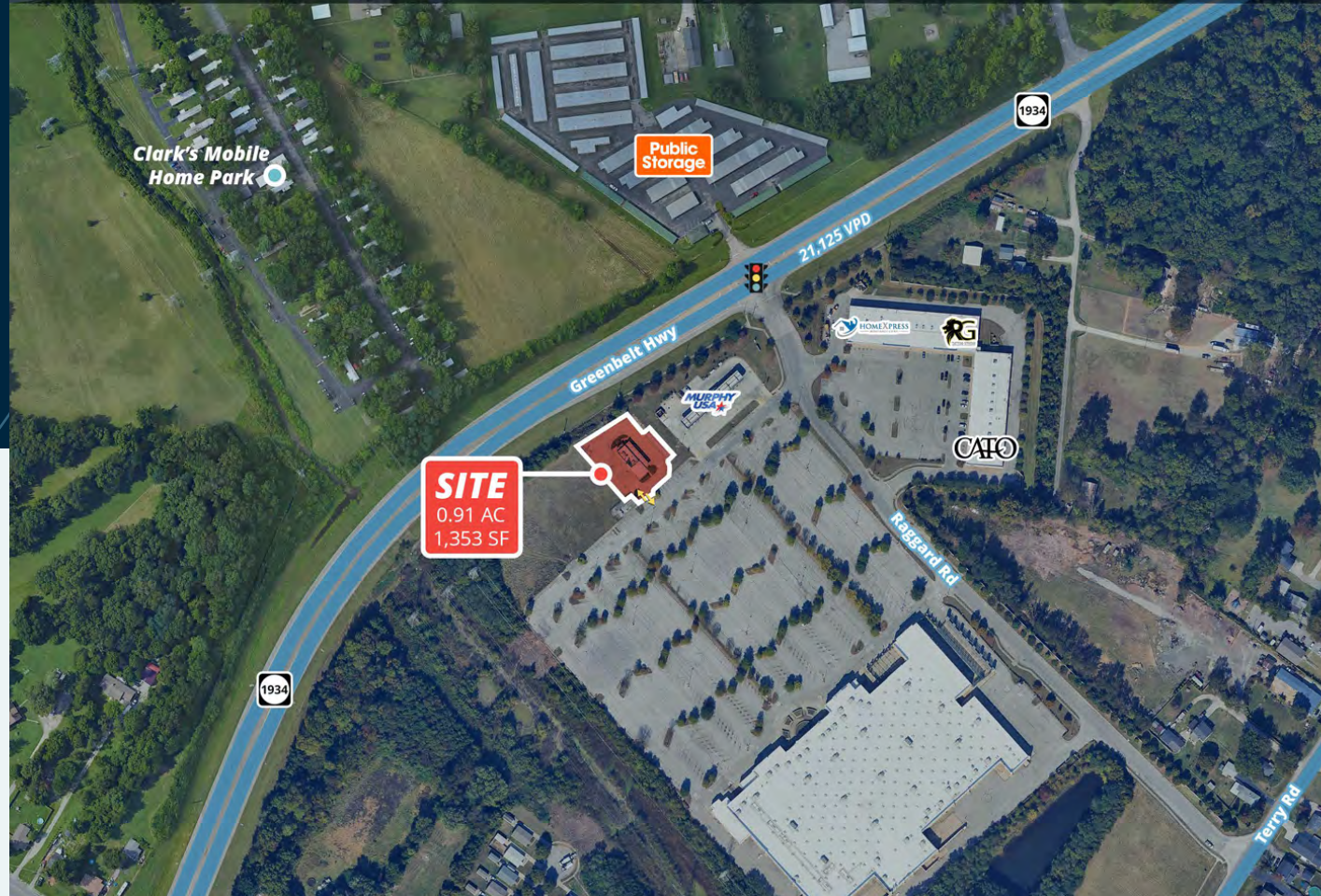
±1,353 SF

PARCEL SIZE

±0.91 AC

DEDICATED PARKING

22



About the Property

- Prime 0.91 AC outparcel opportunity in southwest Louisville with an existing 1,353 SF building, ideal for a variety of retail or restaurant users
- Ample on-site parking with 22 exclusive spaces, providing convenient access for customers and staff
- Excellent visibility and accessibility within a well-trafficked corridor
- Located in the dense Pleasure Ridge Park submarket, a well-established and densely populated residential community providing a strong, consistent customer base
- Steady daytime traffic heavily influenced by commuters and local residents plus nearby schools, medical users, and local employers traveling along Dixie Highway, one of Louisville's primary retail and transportation

Join These Retailers

NUCOR®



CATO

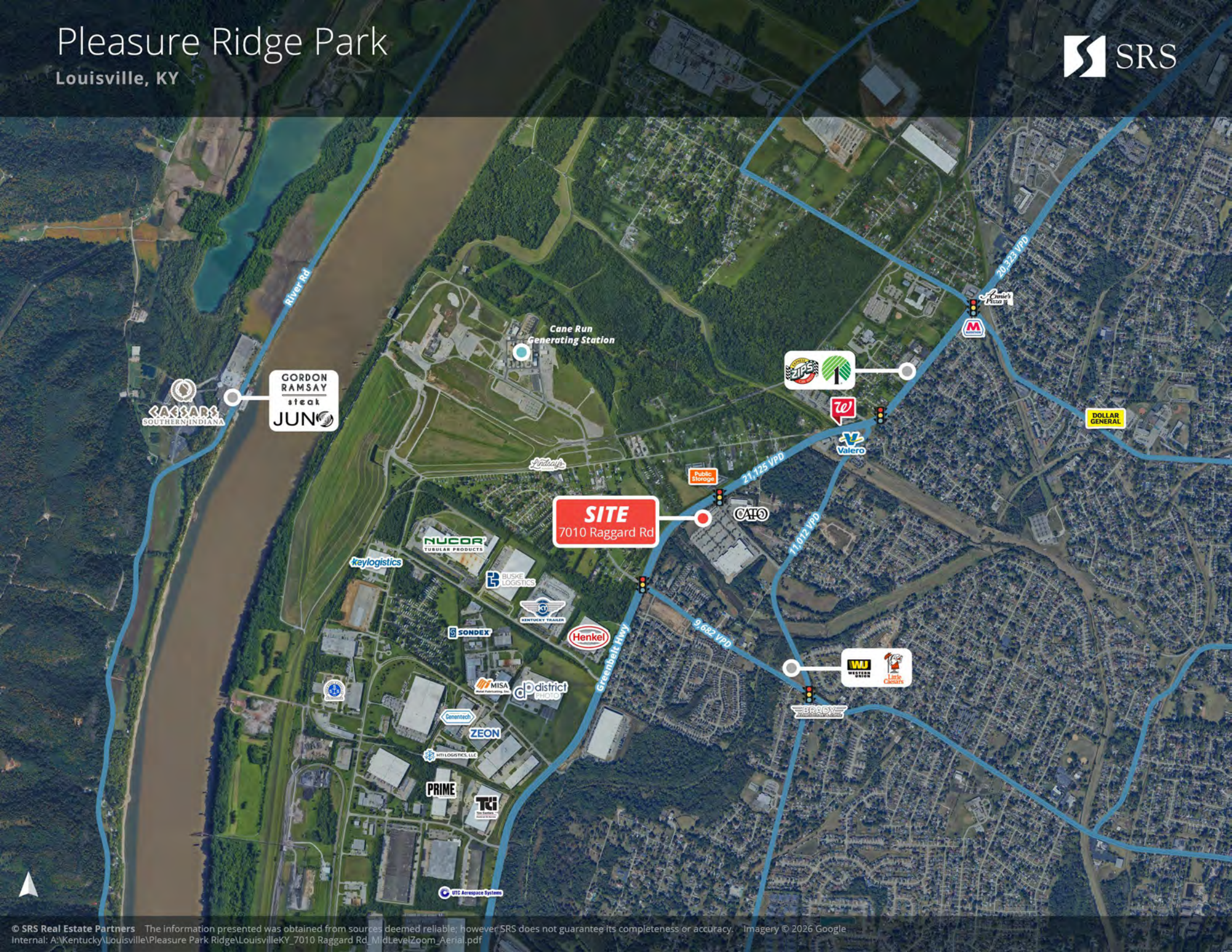


Walgreens



Pleasure Ridge Park

Louisville, KY



SITE
7010 Raggard Rd

CAESARS
SOUTHERN INDIANA

GORDON
RAMSAY
steak
JUNO

Cane Run
Generating Station



DOLLAR
GENERAL

Keylogistics

NUCOR
TUBULAR PRODUCTS

BUSKE
LOGISTICS

SONDEX

KENTUCKY TRUCKER

Henkel

dp district
PHOTO

MISA

Semtech

ZEON

PRIME

TGI

UTC Aerospace Systems

CATO

Public
Storage

WU
WESTERN
UNIVERSITY

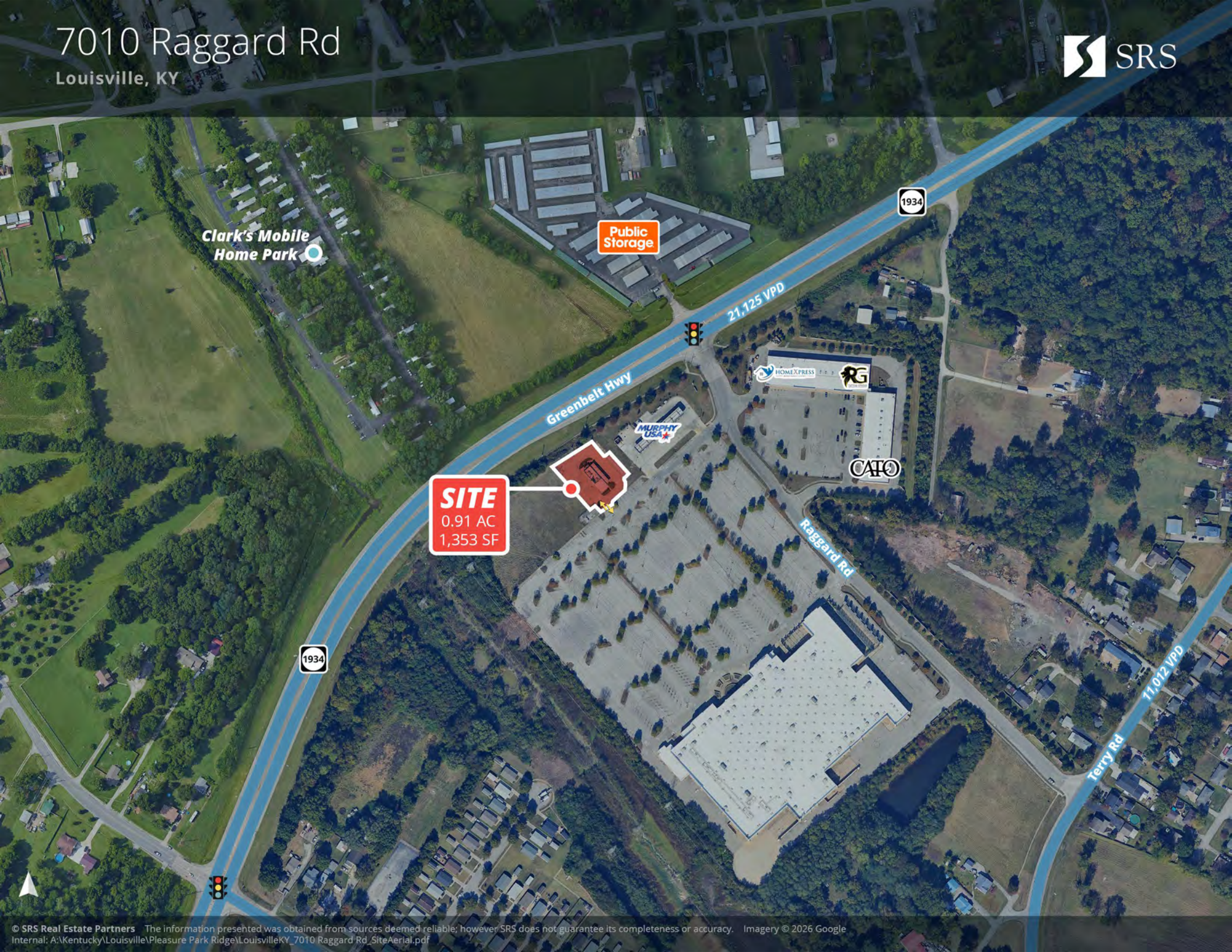
Little
Caesars

BRADY

Amie's
Pizza

7010 Raggard Rd

Louisville, KY



Clark's Mobile Home Park

Public Storage

1934

21,125 VPD

Greenbelt Hwy

HOME X PRESS

RG

MURPHY USA

CATO

SITE
0.91 AC
1,353 SF

Raggard Rd

1934

11,012 VPD

Terry Rd



Area Snapshot

1 MILE

5,428 Population	4,104 Total Daytime Population	\$70,749 Average Household Income	2,161 Total Households
----------------------------	---	--	-------------------------------------

3 MILES

49,049 Population	41,831 Total Daytime Population	\$73,774 Average Household Income	20,060 Total Households
-----------------------------	--	--	--------------------------------------

5 MILES

111,307 Population	97,717 Total Daytime Population	\$74,095 Average Household Income	44,902 Total Households
------------------------------	--	--	--------------------------------------

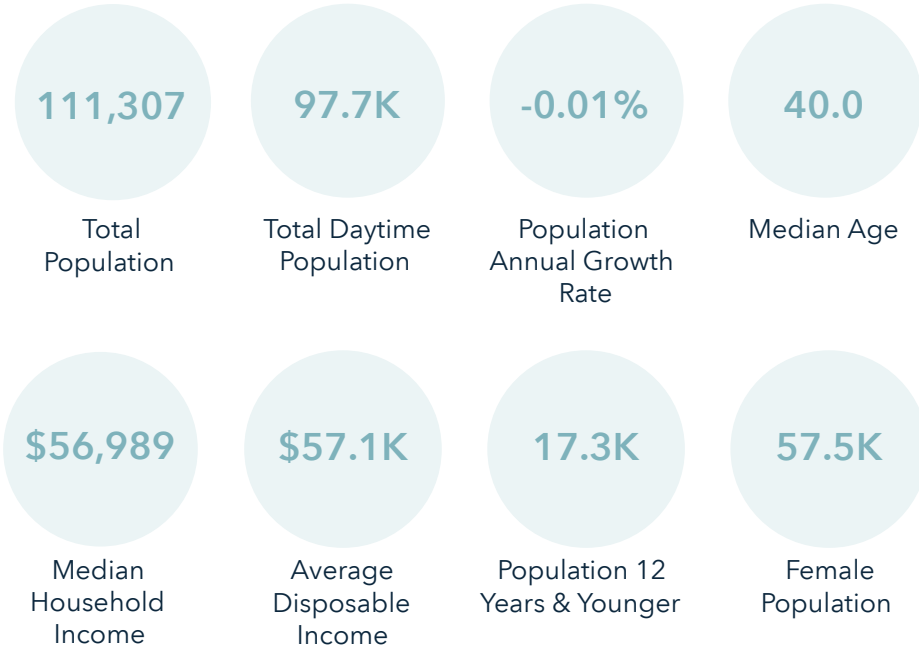


Want more? Contact us for a complete demographic, foot-traffic, and mobile data insights report.

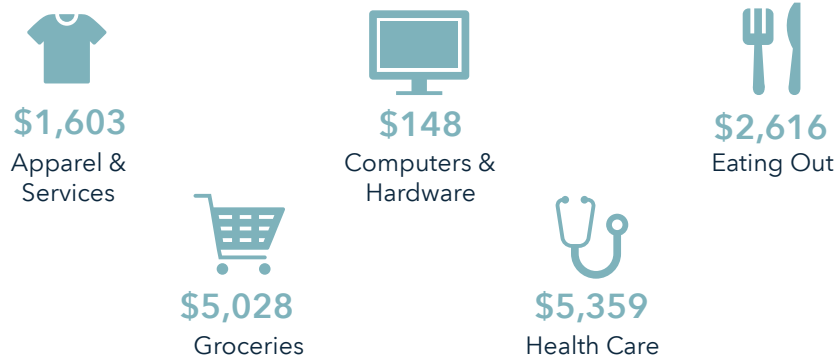


Ring of 5 Miles

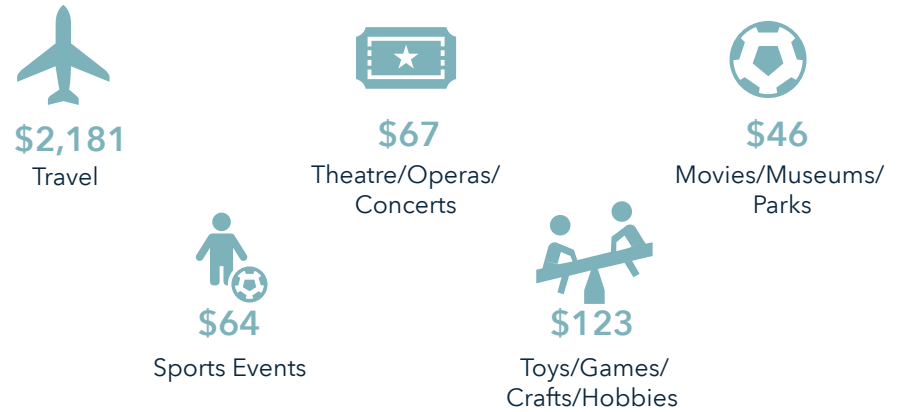
Key Facts



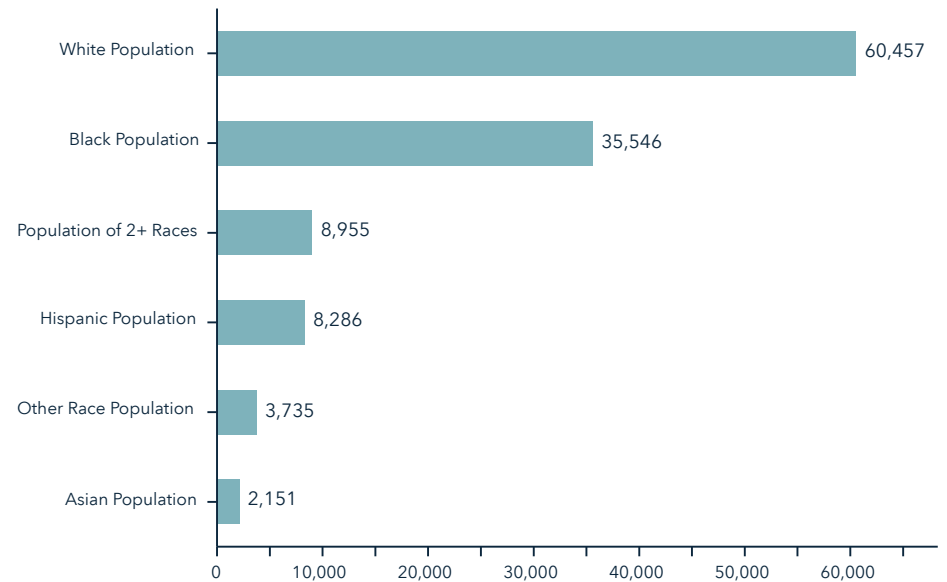
Annual Household Spending



Annual Lifestyle Spending



Race





About Louisville, KY

Louisville, Kentucky is the largest city in the state and serves as a major economic and logistics hub for the Midwest and Southeast. Strategically located along the Ohio River and within a day's drive of more than half of the U.S. population, Louisville offers exceptional regional connectivity. The city is home to the UPS Worldport global air hub, Louisville Muhammad Ali International Airport, and major interstate corridors including I-64, I-65, and I-71, making it one of the most efficient distribution and transportation centers in the country.

Louisville also features a diverse and growing economy driven by healthcare, advanced manufacturing, food and beverage, and technology sectors. A skilled workforce, strong population base, and vibrant tourism industry highlighted by global events like the Kentucky Derby create a dynamic and business-friendly environment that supports long-term growth.

WHY LOUISVILLE?

Its central location, global logistics infrastructure, and diverse economy position it as a leading business hub in the Midwest and Southeast.

Louisville/Jefferson County by the Numbers

1.38+M
TOTAL POPULATION

1.4M
DAYTIME POPULATION

563,348
TOTAL HOUSEHOLDS

\$99,665
AVERAGE HH INCOME

16.4M
ANNUAL VISITORS

\$3.5B
ECONOMIC IMPACT



SRS REAL ESTATE PARTNERS

6100 Dutchmans Lane, Suite 1200
Louisville, KY 40205
502.399.8949

SRSRE.COM

©2026 SRS. All Rights Reserved.

The information presented was obtained from sources deemed reliable;
however SRS does not guarantee its completeness or accuracy.