

BACK ON THE MARKET RETAIL SPACE FOR LEASE



**GOLDSCHMIDT
& ASSOCIATES**
Commercial Real Estate Group



KOHL'S SHOPPING CENTER
2350 Central Avenue
Yonkers, New York

Property Features

- » 5,717 SF - Corner Location
- » Medical Uses Accepted
- » Great Frontage
- » 500 Parking Spaces
- » Join: Kohls, Petco, Sprint, Famous Footwear, CVS, Nathans, Mattress Firm, Chase Bank, & Wells Fargo Bank
- » Daily Traffic Count: 50,924

Demographics

	<u>3 Mile</u>	<u>5 Mile</u>	<u>7 Mile</u>
» Population	138,494	446,810	813,626
» Avg HH Income	\$173,713	\$143,481	\$115,259

» **Asking Rent - Price Upon Request**

Contact:

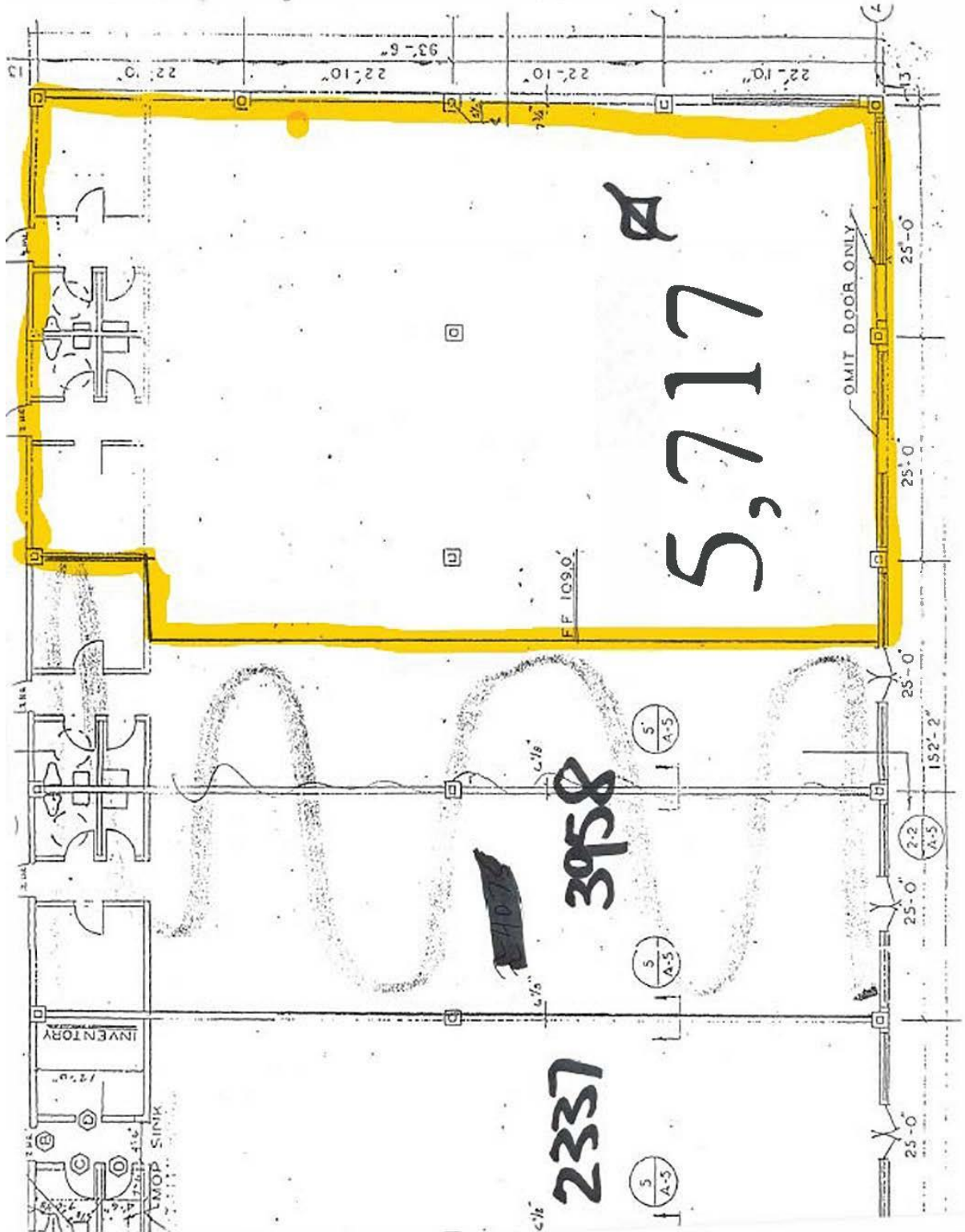
Exclusive Agent:

Pam Bren Goldschmidt

Phone: 914-924-8967

Email: pam@ga-re.com

2350 Central Avenue Yonkers, NY



All information furnished regarding property for sale, rental or financing is from sources deemed reliable; but no warranty or representation is made to the accuracy there of and same is submitted subject to errors, omissions, changes of price, rental or other conditions prior sales, sales, lease or withdrawal without notice.

2350 Central Avenue Yonkers, NY



All information furnished regarding property for sale, rental or financing is from sources deemed reliable; but no warranty or representation is made to the accuracy there of and same is submitted subject to errors, omissions, changes of price, rental or other conditions prior sales, sales, lease or withdrawal without notice.

2350 Central Avenue Yonkers, NY



All information furnished regarding property for sale, rental or financing is from sources deemed reliable; but no warranty or representation is made to the accuracy there of and same is submitted subject to errors, omissions, changes of price, rental or other conditions prior sales, sales, lease or withdrawal without notice.

2350 Central Avenue Yonkers, NY



All information furnished regarding property for sale, rental or financing is from sources deemed reliable; but no warranty or representation is made to the accuracy there of and same is submitted subject to errors, omissions, changes of price, rental or other conditions prior sales, sales, lease or withdrawal without notice.