

# 952 S. Dorset Rd.

Troy, OH | Miami County

Owned and Managed By:

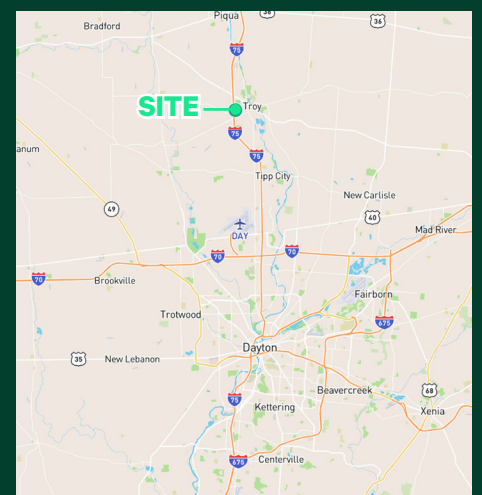
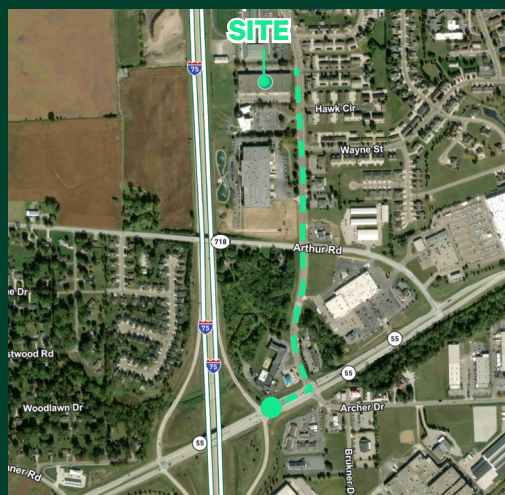


6,789 SF Available for Lease



## SITE FEATURES

- + 6,789 SF Available
- + ~1,000 SF Office (recently refreshed)
- + One (1) Dock
- + One (1) Drive-in Door
- + I-75 Visibility
- + .07 miles to I-75
- + End cap space



952 S. Dorset Dr.  
Troy, OH | Miami County

For Lease



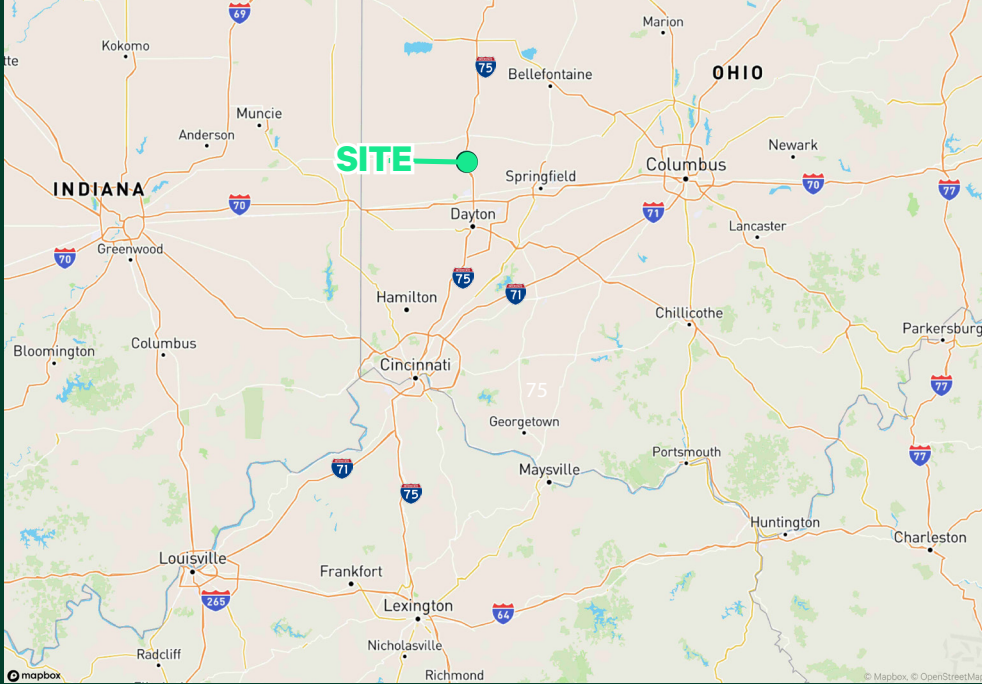
## BUILDING SPECS

Total Building Area	76,800 SF
Available	6,789 SF
Office	~1,000 SF
Year Built	1988
Zoning	M2- Light Industrial
Dock Doors	1
Drive-ins	1 (14' x 14')
Column Spacing	40' x 40'
Clear Height	18'-19'
Water	City of Troy
Gas	Vectren
Sprinkler	Wet
Electricity	AES 120/208V 100 amps & 277/480V 225 amps



952 S. Dorset Dr.  
Troy, OH | Miami County

For Lease



## Contact Us

**Doug Whitten**

Executive Vice President

+1 513 369 1332

doug.whitten@cbre.com

**Beau Nimer**

First Vice President

+1 513 369 1335

beau.nimer@cbre.com

© 2025 CBRE, Inc. All rights reserved. This information has been obtained from sources believed reliable, but has not been verified for accuracy or completeness. You should conduct a careful, independent investigation of the property and verify all information. Any reliance on this information is solely at your own risk. CBRE and the CBRE logo are service marks of CBRE, Inc. All other marks displayed on this document are the property of their respective owners, and the use of such logos does not imply any affiliation with or endorsement of CBRE. Photos herein are the property of their respective owners. Use of these images without the express written consent of the owner is prohibited.

[www.cbre.com/cincinnati](http://www.cbre.com/cincinnati)

**CBRE**