

Burger

& COMPANY

FOR LEASE

22000 Springbrook Street
Farmington Hills, Michigan
543 & 665 Sq. Ft.



- Two suites Available
- Suite 203 - 543 Sq. Ft.
- Suite 204 - 665 Sq. Ft.
- Perfect for Any Professional Business
- Mainstreet Exposure/Signage Available
- New Ownership
- ADA Compliant with an Elevator
- 30 Days Occupancy
- \$17.00/PSF Full Gross

Burger & Company

248.536.2888

www.burgercollc.com

38345 W. 10 Mile Road, Suite 100
Farmington Hills, MI 48335

Michael Rose

Senior Associate

Cell: 248.396.6982

michael.rose@burgercollc.com

Information contained herein is deemed to be reliable but is not guaranteed and may be withdrawn at any time.

FOR LEASE

22000 Springbrook Street
Farmington Hills, MI



BUILDING SPECIFICATIONS

Location	Springbrook and Grand River Ave	Square Feet Available	1,208 SF
Zoning	B1 - Retail/Office	Lot Size	0.72 Acres
Year Built	1980/Renovated 2025		

Construction	Brick	Sewer	City
Gas	Forced Air	Water	City
Parking	50 Spots	Restrooms	Four (4)
Neighbors	Corewell Health, Target, Shopping and Hotels		

Description

- Two suites Available
- Suite 203 - 543 Sq. Ft.
- Suite 204 - 665 Sq. Ft.
- Perfect for Any Professional Business
- Mainstreet Exposure/Signage Available
- New Ownership
- ADA Compliant with an Elevator
- 30 Days Occupancy

Lease Rate	\$17.00 PSF
Lease Type	Gross
Availability	30 Days Occupancy



Michael Rose

Senior Associate
Cell: 248.396.6982
michael.rose@burgercollc.com

248.536.2888
www.burgercollc.com
38345 W. 10 Mile Road, Suite 100
Farmington Hills, MI 48335

Information contained herein is deemed to be reliable but is not guaranteed and may be withdrawn at any time.

FOR LEASE

22000 Springbrook Street
Farmington Hills, MI



Burger

& COMPANY

Michael Rose

Senior Associate

Cell: 248.396.6982

michael.rose@burgercollc.com

248.536.2888

www.burgercollc.com

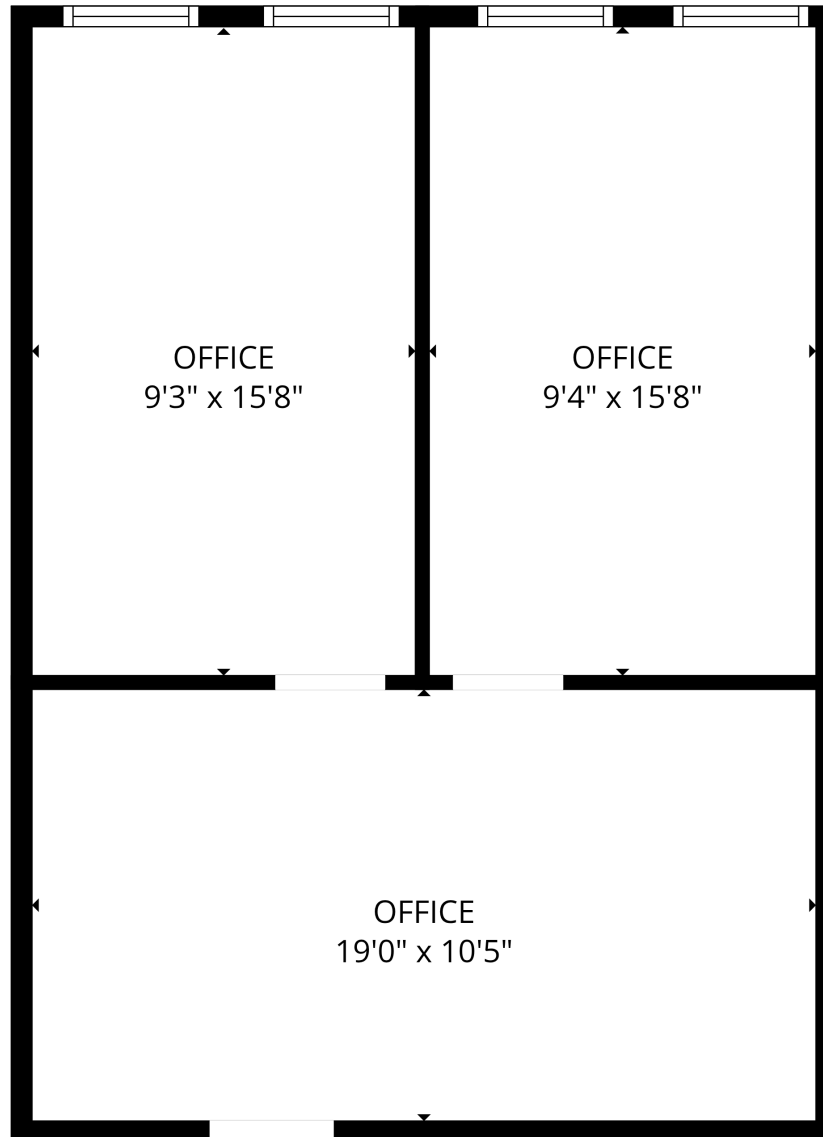
38345 W. 10 Mile Road, Suite 100
Farmington Hills, MI 48335

Information contained herein is deemed to be reliable but is not guaranteed and may be withdrawn at any time.

FOR LEASE

22000 Springbrook Street
Farmington Hills, MI

SUITE 203 FLOOR PLAN



Burger

& COMPANY

Michael Rose

Senior Associate

Cell: 248.396.6982

michael.rose@burgercollc.com

248.536.2888

www.burgercollc.com

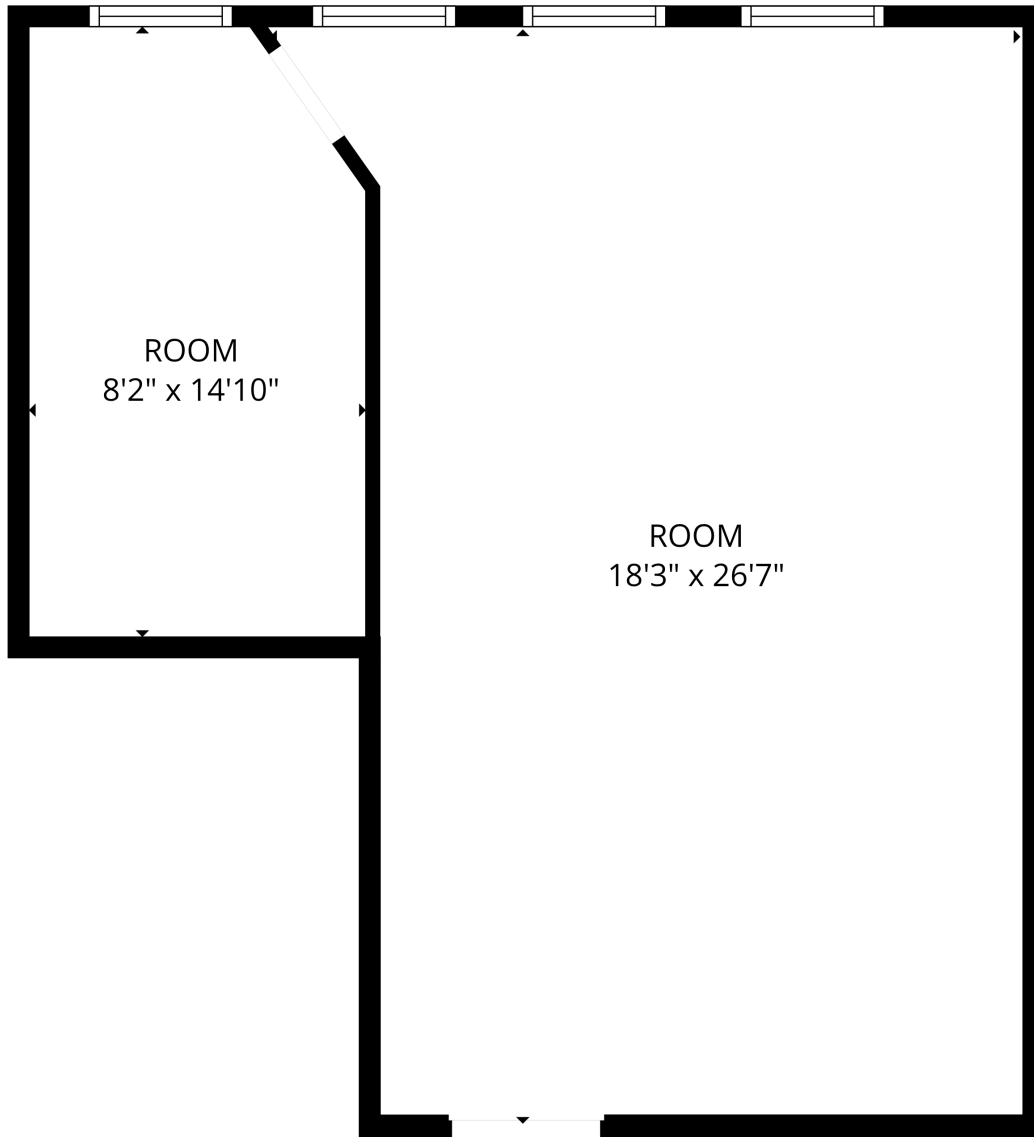
38345 W. 10 Mile Road, Suite 100
Farmington Hills, MI 48335

Information contained herein is deemed to be reliable but is not guaranteed and may be withdrawn at any time.

FOR LEASE

22000 Springbrook Street
Farmington Hills, MI

SUITE 204 FLOOR PLAN



Burger

& COMPANY

Michael Rose

Senior Associate

Cell: 248.396.6982

michael.rose@burgercollc.com

248.536.2888

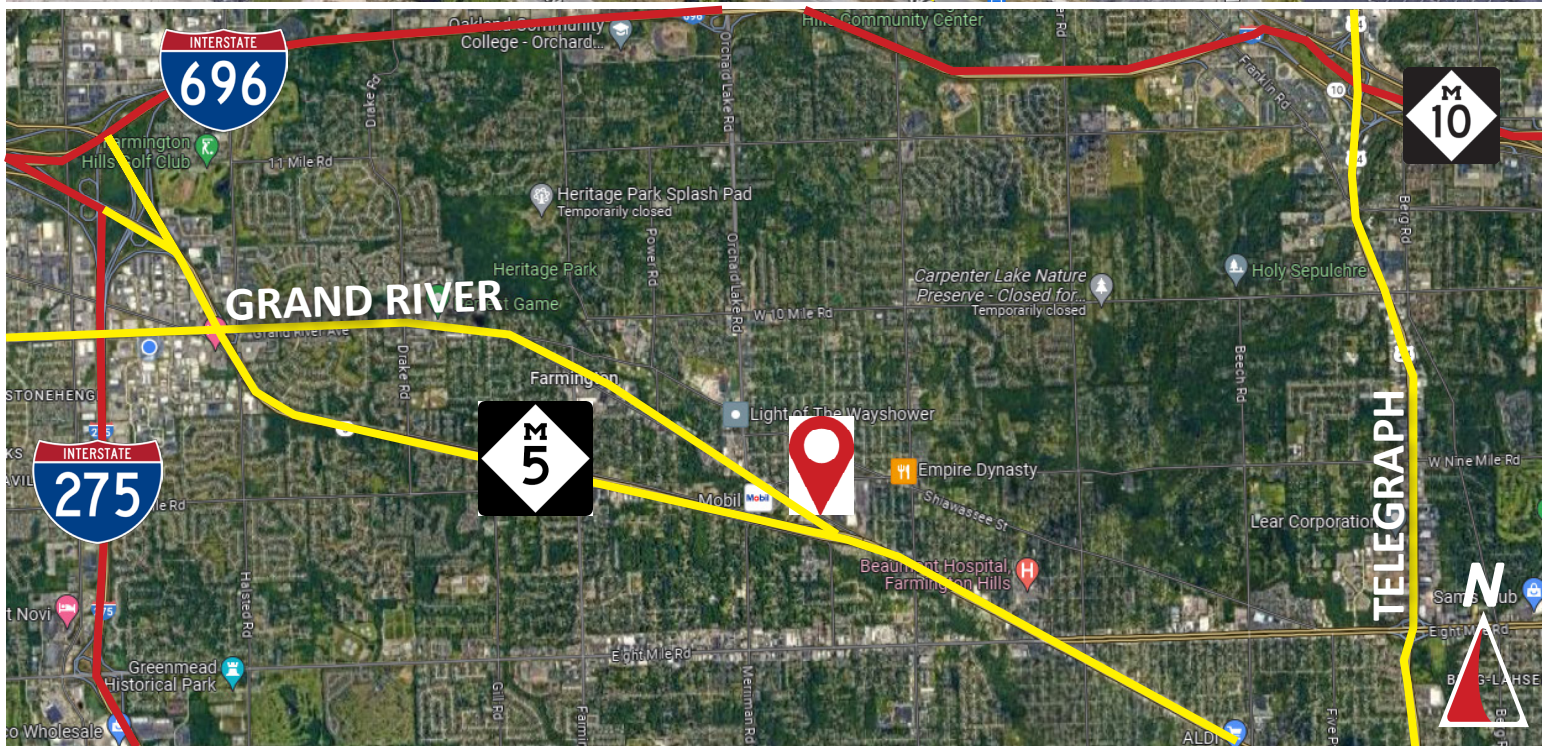
www.burgercollc.com

38345 W. 10 Mile Road, Suite 100
Farmington Hills, MI 48335

Information contained herein is deemed to be reliable but is not guaranteed and may be withdrawn at any time.

FOR LEASE

22000 Springbrook Street
Farmington Hills, MI



Michael Rose
Senior Associate
Cell: 248.396.6982
michael.rose@burgercollc.com

248.536.2888
www.burgercollc.com
38345 W. 10 Mile Road, Suite 100
Farmington Hills, MI 48335

Information contained herein is deemed to be reliable but is not guaranteed and may be withdrawn at any time.