

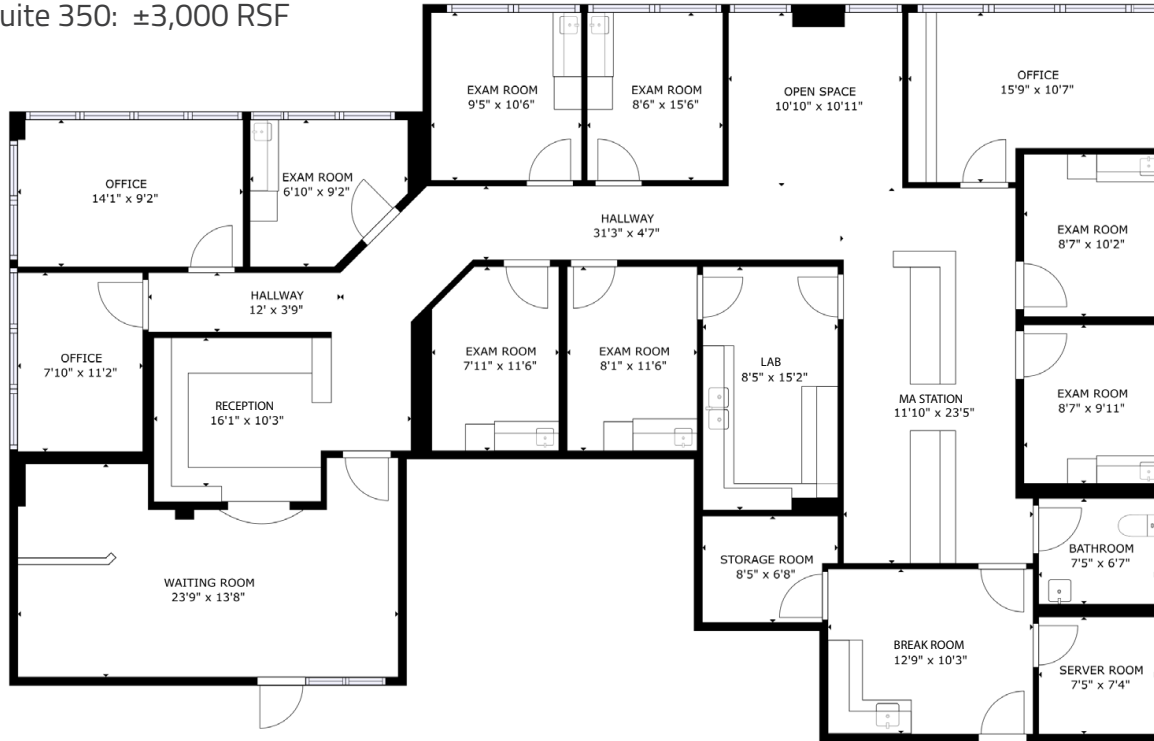


ESTRELLA HEALTH CENTER

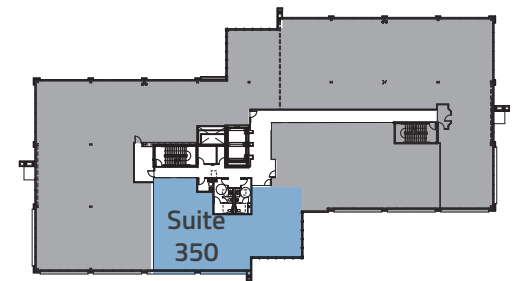
MEDICAL SPACE FOR LEASE

9250 WEST THOMAS ROAD, PHOENIX, AZ 85037

Suite 350: ±3,000 RSF



THIRD FLOOR - KEY PLAN



Leasing Information:

Kevin Smigiel
602.265.5502
kevin.smigiel@transwestern.com

Kathleen Morgan
602.809.1048
kathleen.morgan@transwestern.com

Vince Femiano
602.954.7559
vince.femiano@transwestern.com

Andrew Olivet
602.370.2685
andrew.olivet@transwestern.com



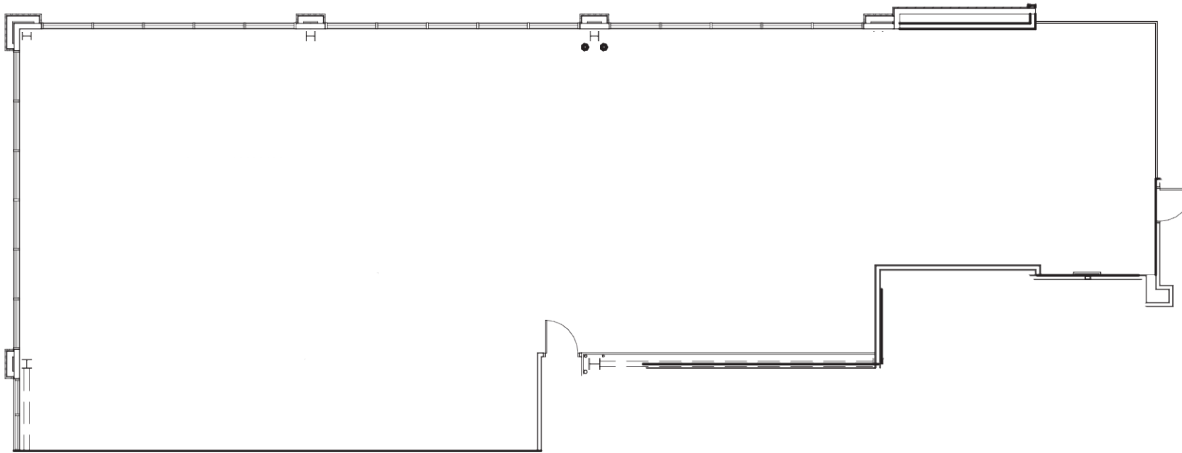
2501 E Camelback Rd, Ste 1
Phoenix, AZ 85016
transwestern.com



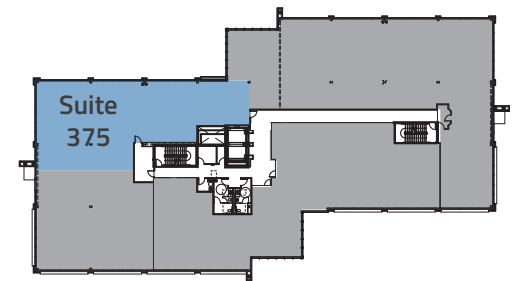
ESTRELLA
HEALTH CENTER

MEDICAL SPACE FOR LEASE
9250 WEST THOMAS ROAD, PHOENIX, AZ 85037

Suite 375: ±4,790 RSF



THIRD FLOOR - KEY PLAN



Leasing Information:

Kevin Smigiel
602.265.5502
kevin.smigiel@transwestern.com

Kathleen Morgan
602.809.1048
kathleen.morgan@transwestern.com

Vince Femiano
602.954.7559
vince.femiano@transwestern.com

Andrew Olivet
602.370.2685
andrew.olivet@transwestern.com



2501 E Camelback Rd, Ste 1
Phoenix, AZ 85016
transwestern.com