

CLASS A HIGH-END MEDICAL OFFICE SPACE | FOR LEASE

8929 WILSHIRE BOULEVARD

BEVERLY HILLS, CALIFORNIA 90211

FOR LEASE



STEVEN SALAS

Senior Managing Director

Newmark

t 310-407-6569 | m 310-508-0660

steven.salas@nmrk.com

CA RE Lic. #01232955

DANIEL CHIPRUT

Executive Vice President

Commercial Asset Group

t 310-800-7955

daniel@cag-re.com

CA RE Lic. #01808709

KELLY REINKER

Brokerage Services Specialist

Newmark

t 213-596-2239 | m 858-349-0513

kelly.reinker@nmrk.com

CA RE Lic. #01963632

NEWMARK

cag | COMMERCIAL
ASSET GROUP

BEVERLY HILLS TURNKEY MEDICAL OFFICE SPACE | FOR LEASE

8929 WILSHIRE BOULEVARD BEVERLY HILLS, CALIFORNIA 90211

Building Information

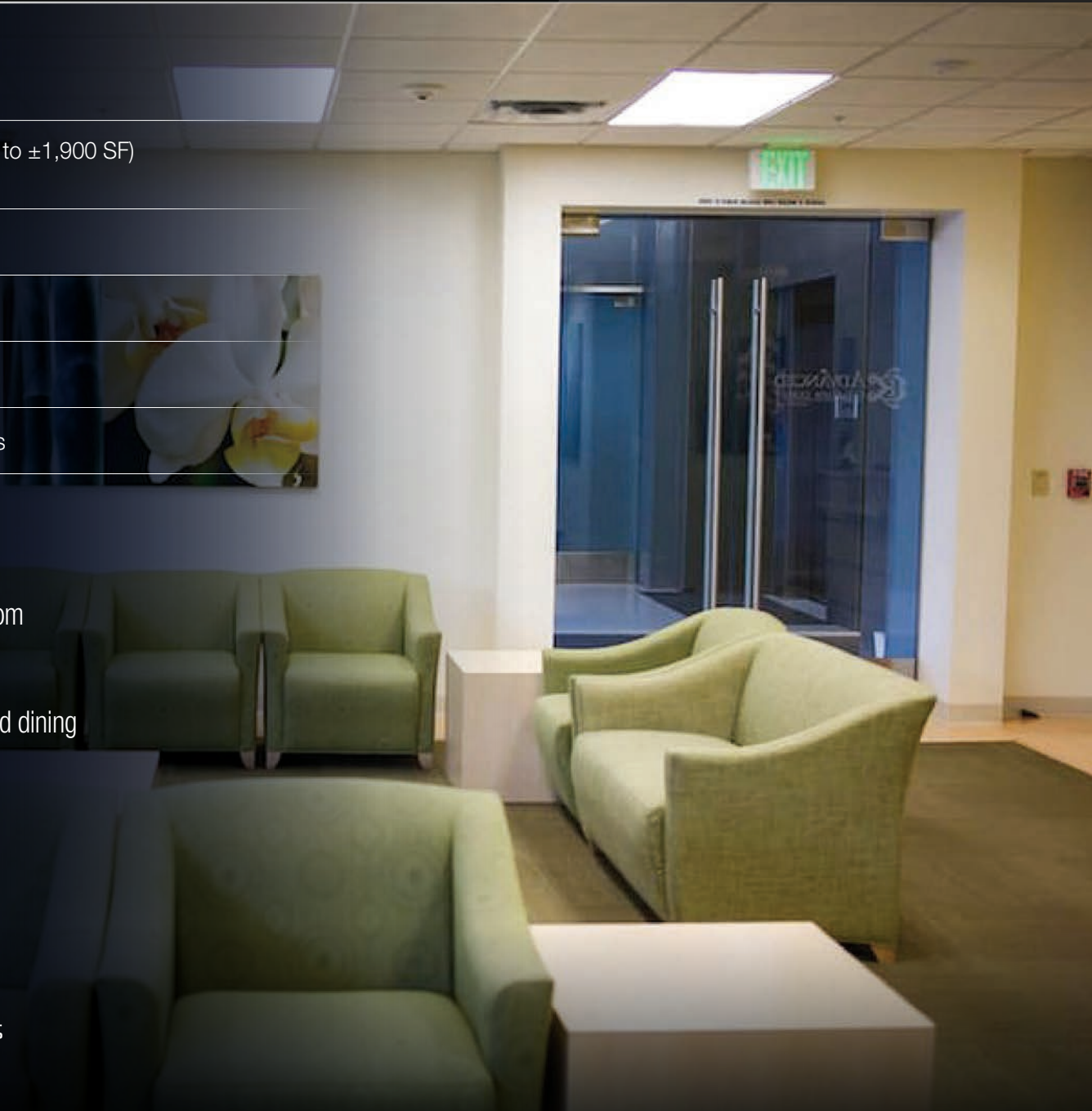
Available Space	Suite 320: ±4,177 SF (Divisible to ±1,900 SF) Suite 325: ±1,122 SF
Asking Rent	Negotiable
Term	10 Years
Availability	Immediate
Parking	4/1,000 SF at Fair Market Rates

Building Highlights

- Prestigious Beverly Hills location, less than 1 mile from Cedars-Sinai Hospital
- Excellent walkability to Beverly Hills shops, hotels and dining
- High-end designer finished medical suites

NEWMARK

cag | COMMERCIAL
ASSET GROUP



BEVERLY HILLS TURNKEY MEDICAL OFFICE SPACE | FOR LEASE

8929 WILSHIRE BOULEVARD BEVERLY HILLS, CALIFORNIA 90211

SUITE/PROPERTY IMAGES



BEVERLY HILLS TURNKEY MEDICAL OFFICE SPACE | FOR LEASE

8929 WILSHIRE BOULEVARD BEVERLY HILLS, CALIFORNIA 90211

SUITE 325 IMAGES

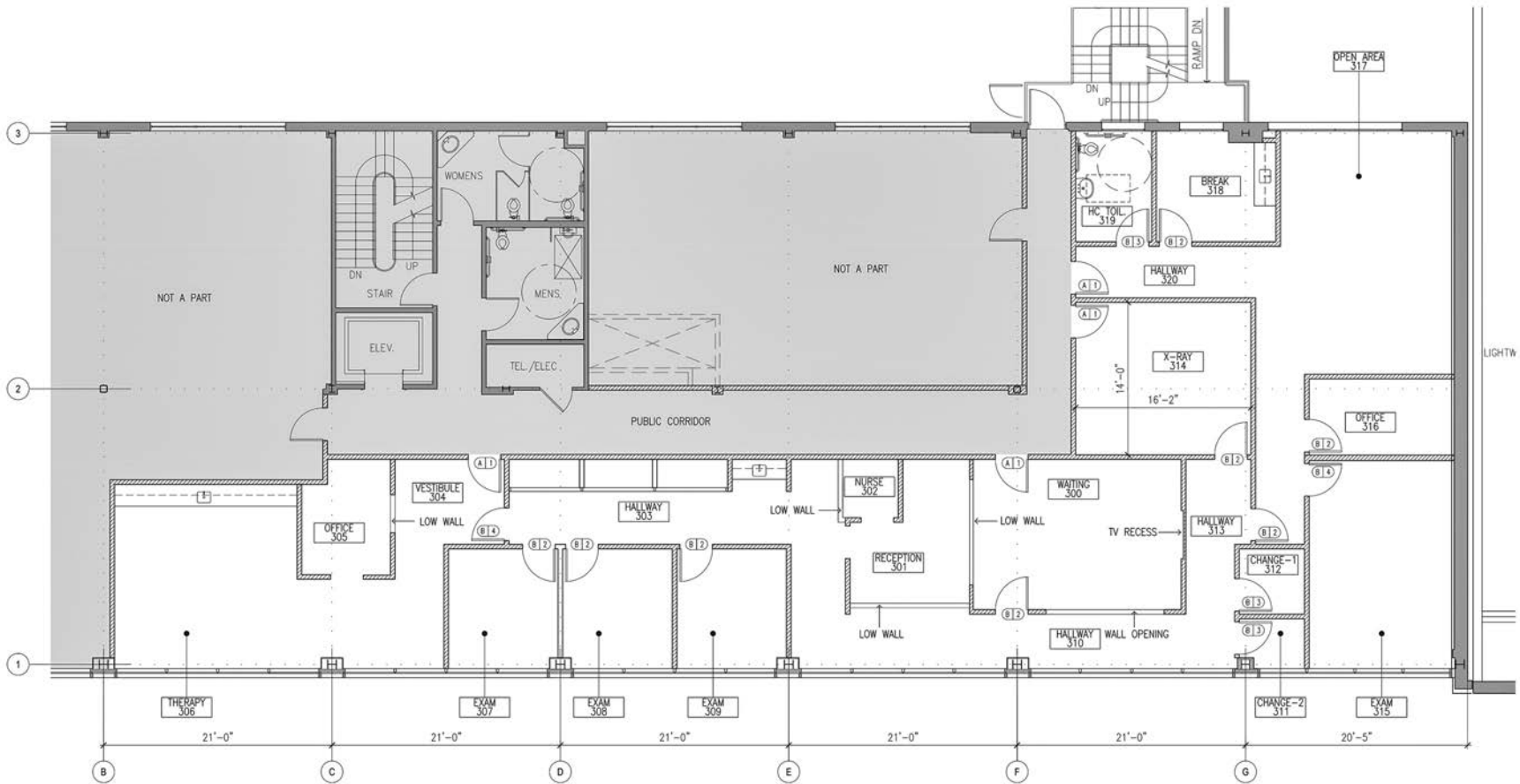


BEVERLY HILLS TURNKEY MEDICAL OFFICE SPACE | FOR LEASE

8929 WILSHIRE BOULEVARD BEVERLY HILLS, CALIFORNIA 90211

FLOORPLAN SUITE 320 | ±4,177 SF

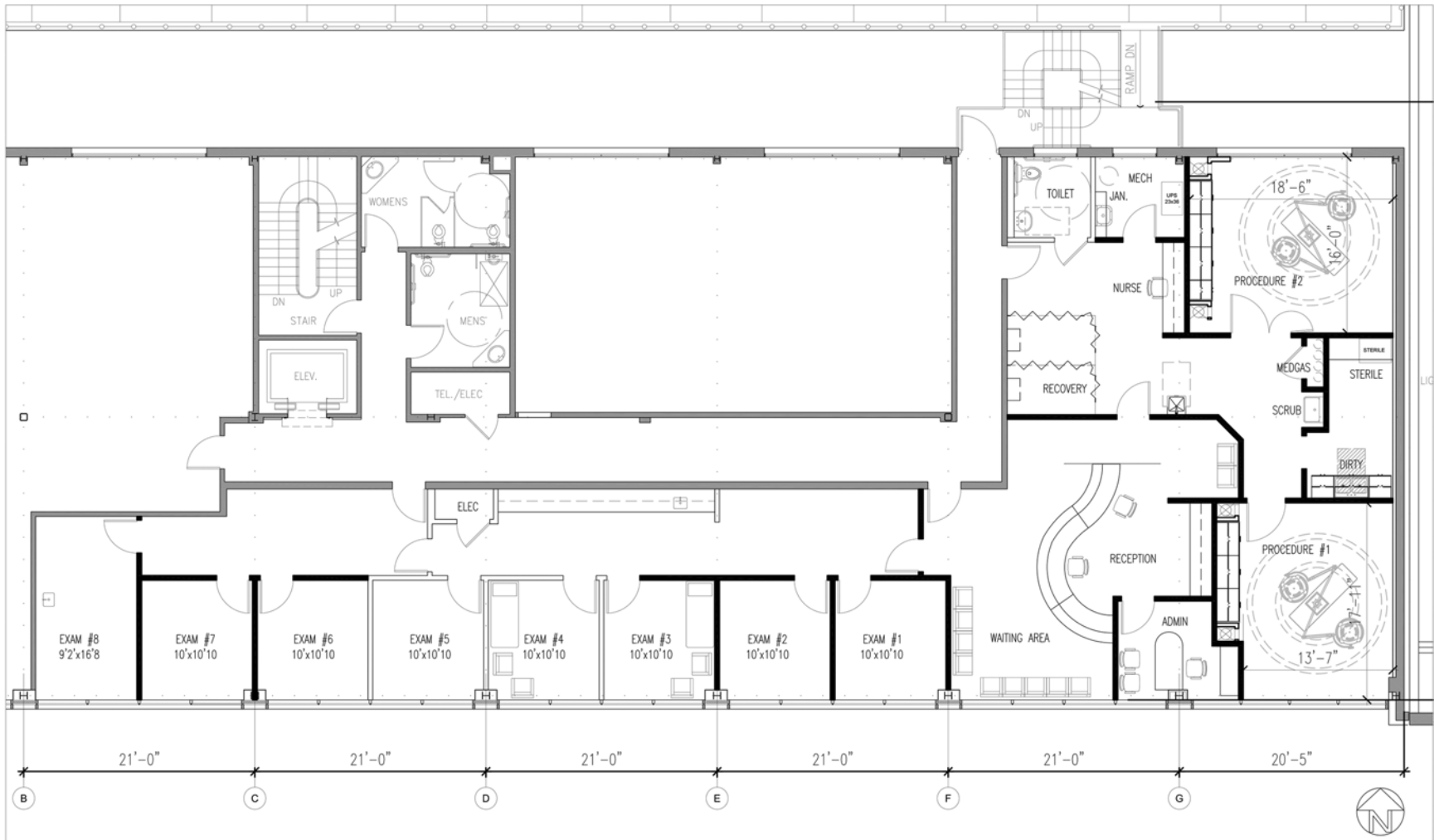
Divisible to ±1,900 SF



BEVERLY HILLS TURNKEY MEDICAL OFFICE SPACE | FOR LEASE

8929 WILSHIRE BOULEVARD BEVERLY HILLS, CALIFORNIA 90211

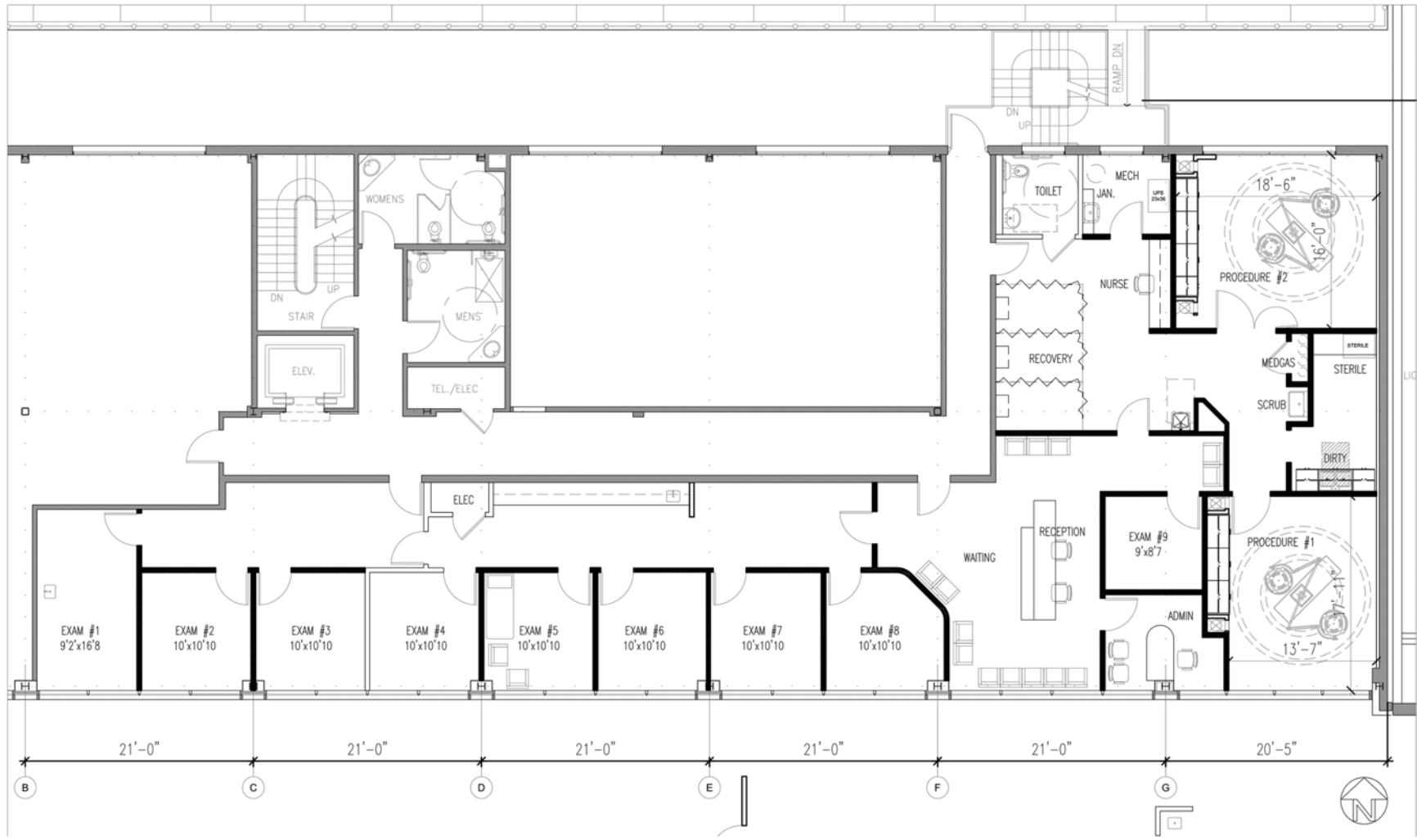
HYPOTHETICAL FLOORPLAN | SUITE 320 | LAYOUT A



BEVERLY HILLS TURNKEY MEDICAL OFFICE SPACE | FOR LEASE

8929 WILSHIRE BOULEVARD BEVERLY HILLS, CALIFORNIA 90211

HYPOTHETICAL FLOORPLAN | SUITE 320 | LAYOUT B



BEVERLY HILLS TURNKEY MEDICAL OFFICE SPACE | FOR LEASE

8929 WILSHIRE BOULEVARD BEVERLY HILLS, CALIFORNIA 90211

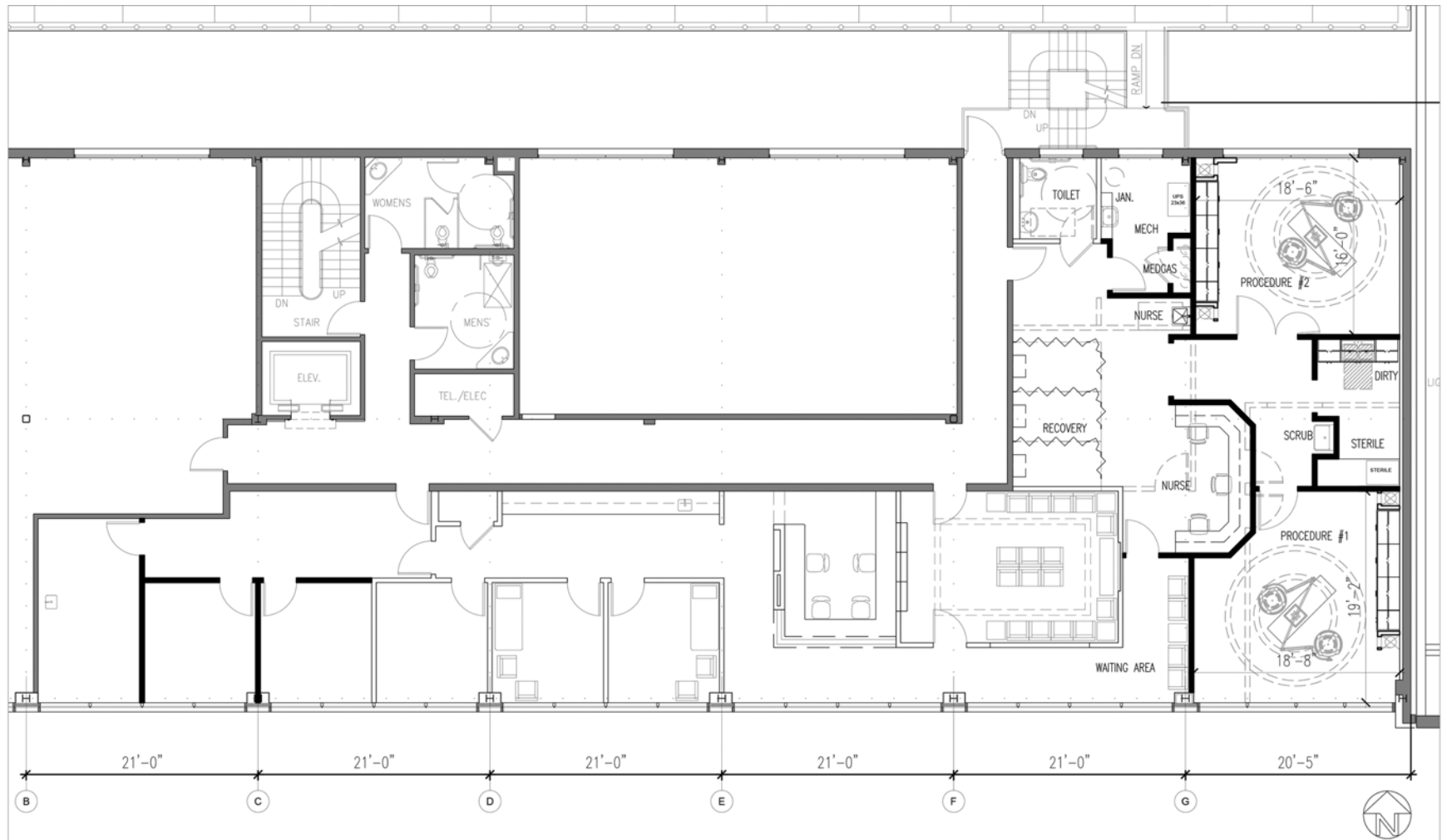
HYPOTHETICAL FLOORPLAN | SUITE 320 | LAYOUT C



BEVERLY HILLS TURNKEY MEDICAL OFFICE SPACE | FOR LEASE

8929 WILSHIRE BOULEVARD BEVERLY HILLS, CALIFORNIA 90211

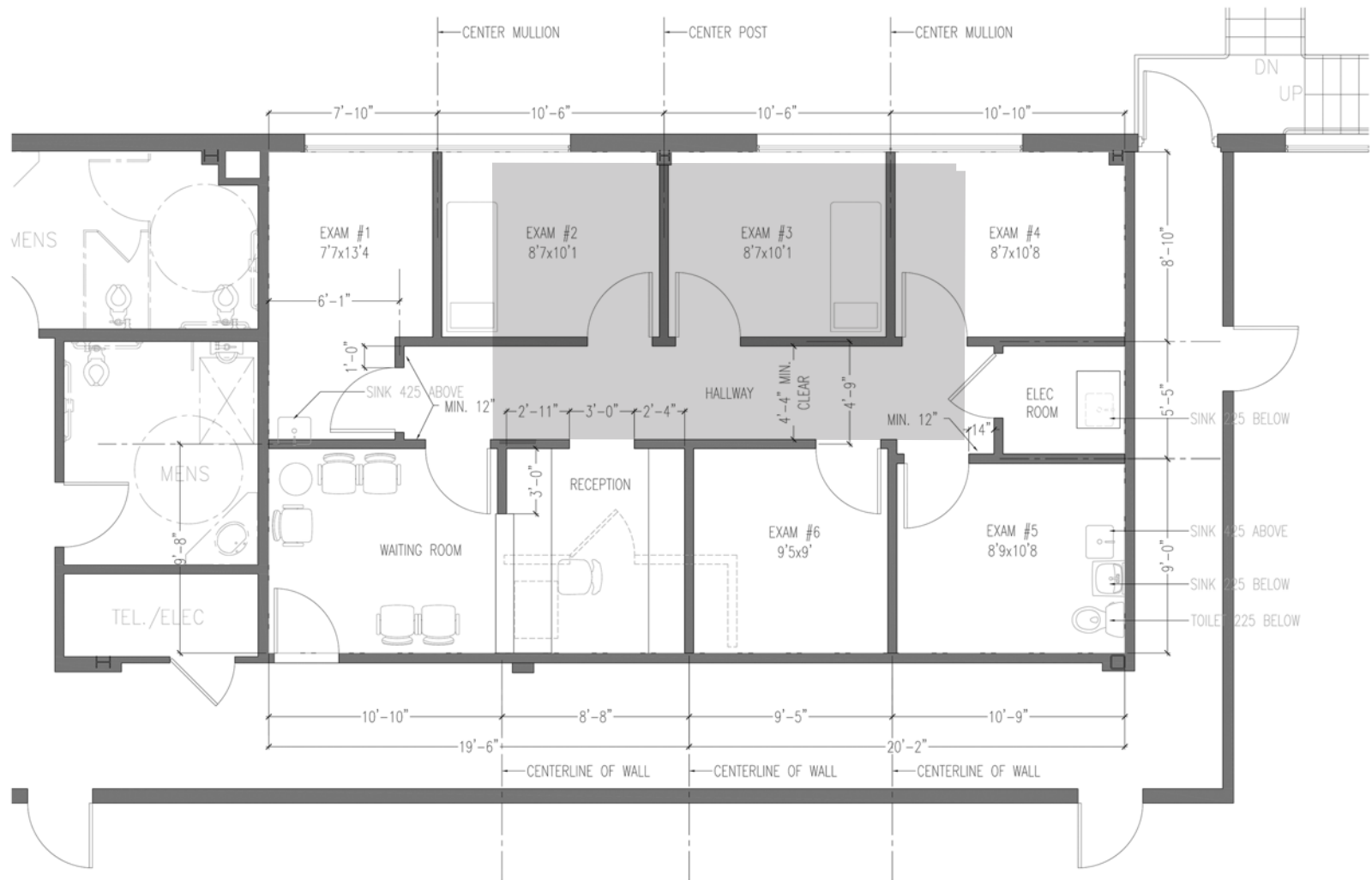
HYPOTHETICAL FLOORPLAN | SUITE 320 | LAYOUT D



BEVERLY HILLS TURNKEY MEDICAL OFFICE SPACE | FOR LEASE

8929 WILSHIRE BOULEVARD BEVERLY HILLS, CALIFORNIA 90211

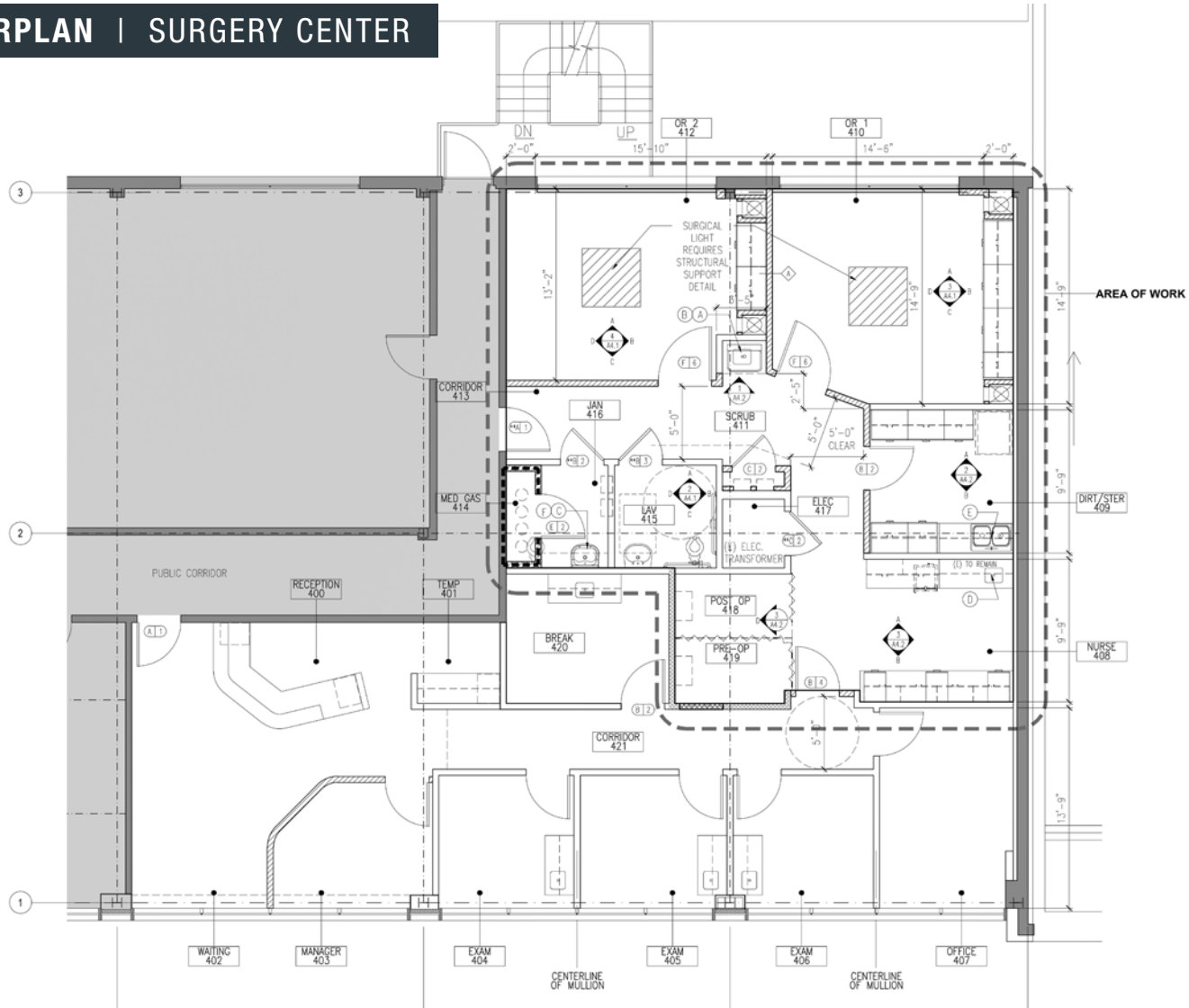
FLOORPLAN SUITE 325 | ±1,122 SF



BEVERLY HILLS TURNKEY MEDICAL OFFICE SPACE | FOR LEASE

8929 WILSHIRE BOULEVARD BEVERLY HILLS, CALIFORNIA 90211

HYPOTHETICAL FLOORPLAN | SURGERY CENTER



BEVERLY HILLS TURNKEY MEDICAL OFFICE SPACE | FOR LEASE

8929 WILSHIRE BOULEVARD BEVERLY HILLS, CALIFORNIA 90211

AREA AMENITIES



BEVERLY HILLS TURNKEY MEDICAL OFFICE SPACE | FOR LEASE

8929 WILSHIRE BOULEVARD BEVERLY HILLS, CALIFORNIA 90211



Four Seasons Los Angeles at Beverly Hills



Spago



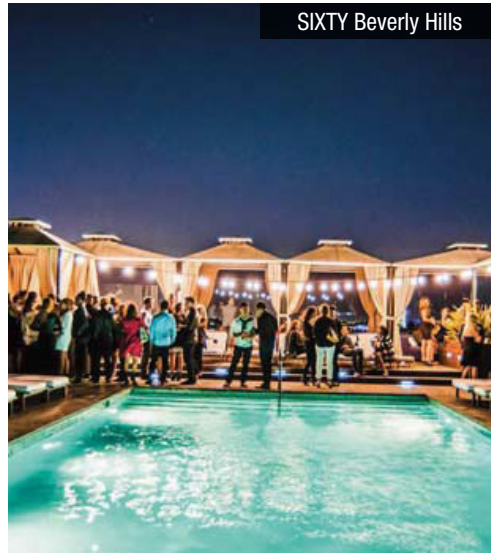
Mastro's



Sugarfish by Nozawa



Robert Burns Wines



SIXTY Beverly Hills



Tagine



La Gondola Beverly Hills

CLASS A HIGH-END MEDICAL OFFICE SPACE | FOR LEASE

8929 WILSHIRE BOULEVARD

BEVERLY HILLS, CALIFORNIA 90211

FOR LEASE

EXCLUSIVELY PRESENTED BY:

STEVEN SALAS

Senior Managing Director

Newmark

t 310-407-6569 | m 310-508-0660

steven.salas@nmrk.com

CA RE Lic. #01232955

DANIEL CHIPRUT

Executive Vice President

Commercial Asset Group

t 310-800-7955 | daniel@cag-re.com

CA RE Lic. #01808709

KELLY REINKER

Brokerage Services Specialist

Newmark

t 213-596-2239 | m 858-349-0513

kelly.reinker@nmrk.com

CA RE Lic. #01963632



nmrk.com

NEWMARK

cag COMMERCIAL
ASSET GROUP

Corporate License #01355491

Procuring broker shall only be entitled to a commission, calculated in accordance with the rates approved by our principal only if such procuring broker executes a brokerage agreement acceptable to us and our principal and the conditions as set forth in the brokerage agreement are fully and unconditionally satisfied. Although all information furnished regarding property for sale, rental, or financing is from sources deemed reliable, such information has not been verified and no express representation is made nor is any to be implied as to the accuracy thereof and it is submitted subject to errors, omissions, change of price, rental or other conditions, prior sale, lease or financing, or withdrawal without notice and to any special conditions imposed by our principal.