



TATUM RIDGE

FOR LEASING INFO
PLEASE CONTACT:

SHEILA BALE

Managing Director

+1 602 224 4454

sheila.bale@cushwake.com

DREW SAMPSON

Director

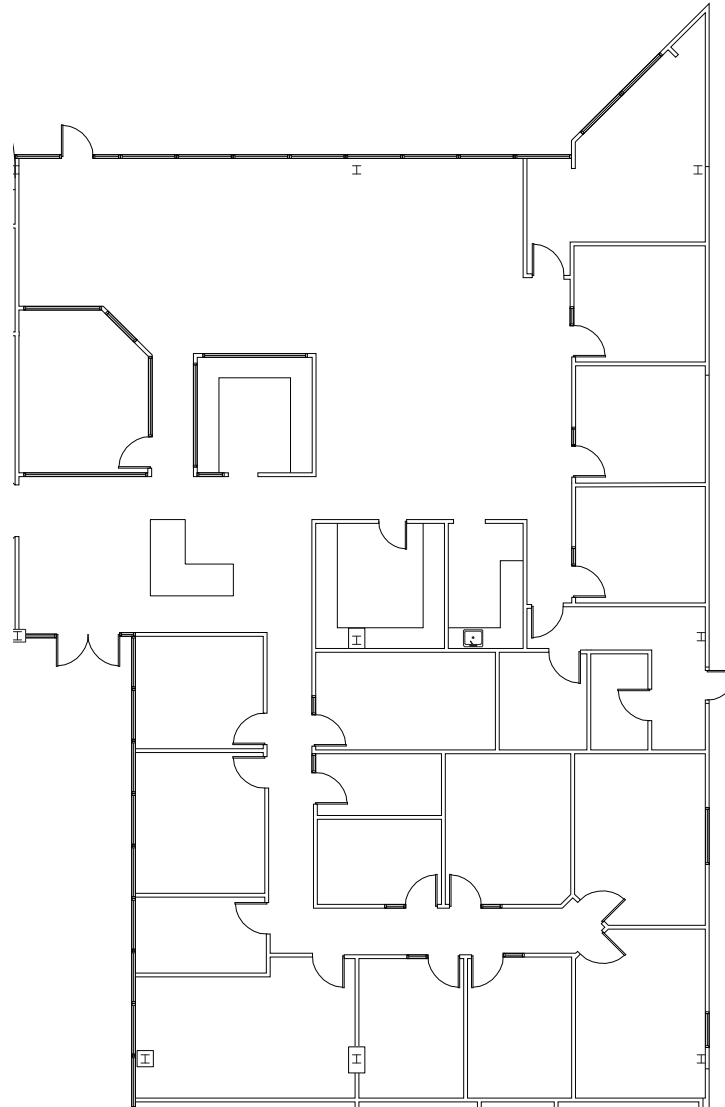
+1 602 468 8521

drew.sampson@cushwake.com



2555 E Camelback Rd, Suite 400
Phoenix, Arizona 85016
Main +1 602 954 9000
Fax +1 602 253 0528
cushmanwakefield.com

11211 N TATUM BLVD
SUITE A130 | 7,263 RSF



11209 - 11211 NORTH TATUM BLVD | PHOENIX, AZ

©2026 Cushman & Wakefield. All rights reserved. The information contained in this communication is strictly confidential. This information has been obtained from sources believed to be reliable but has not been verified. NO WARRANTY OR REPRESENTATION, EXPRESS OR IMPLIED, IS MADE AS TO THE CONDITION OF THE PROPERTY (OR PROPERTIES) REFERENCED HEREIN OR AS TO THE ACCURACY OR COMPLETENESS OF THE INFORMATION CONTAINED HEREIN, AND SAME IS SUBMITTED SUBJECT TO ERRORS, OMISSIONS, CHANGE OF PRICE, RENTAL OR OTHER CONDITIONS, WITHDRAWAL WITHOUT NOTICE, AND TO ANY SPECIAL LISTING CONDITIONS IMPOSED BY THE PROPERTY OWNER(S). ANY PROJECTIONS, OPINIONS OR ESTIMATES ARE SUBJECT TO UNCERTAINTY AND DO NOT SIGNIFY CURRENT OR FUTURE PROPERTY PERFORMANCE. COE-PM-West-04.22.2026



TATUM RIDGE

FOR LEASING INFO
PLEASE CONTACT:

SHEILA BALE

Managing Director

+1 602 224 4454

sheila.bale@cushwake.com

DREW SAMPSON

Director

+1 602 468 8521

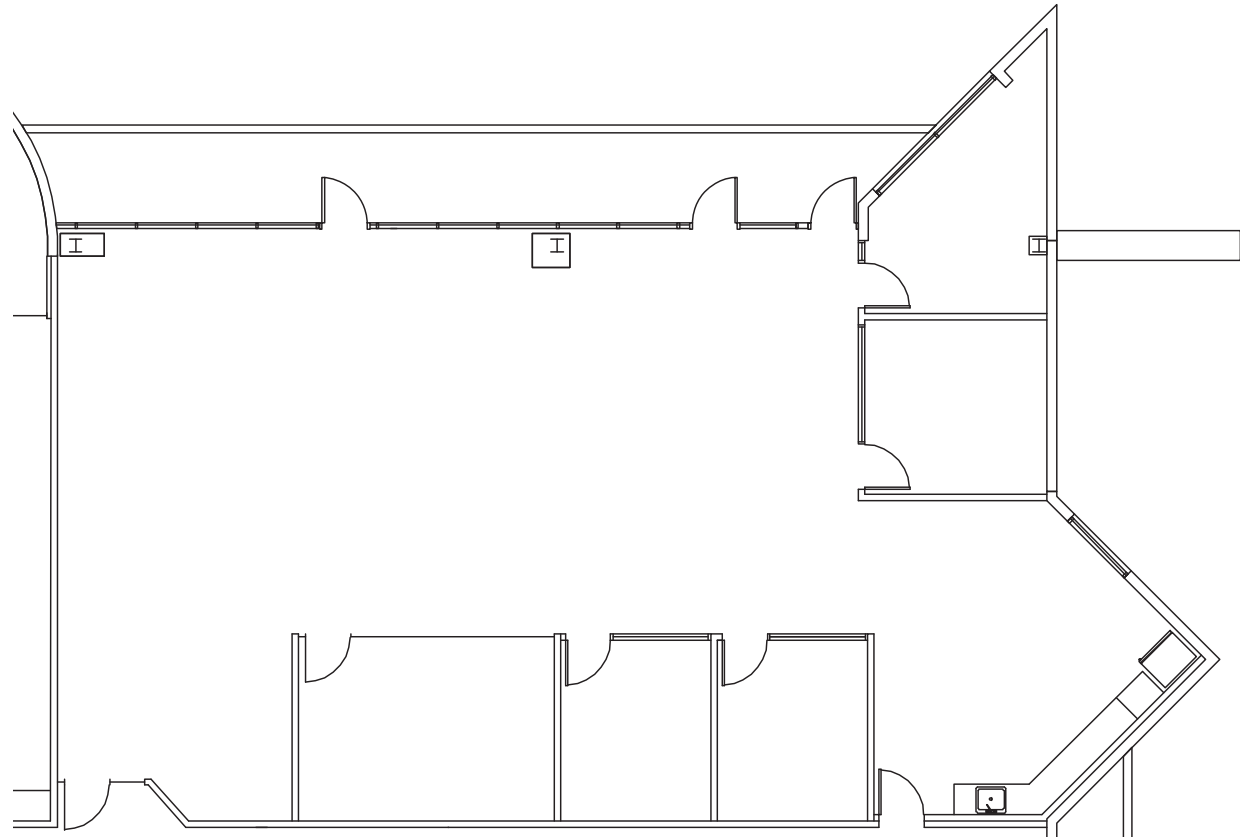
drew.sampson@cushwake.com



**CUSHMAN &
WAKEFIELD**

2555 E Camelback Rd, Suite 400
Phoenix, Arizona 85016
Main +1 602 954 9000
Fax +1 602 253 0528
cushmanwakefield.com

11211 N TATUM BLVD
SUITE A210 | 3,776 RSF



11209 - 11211 NORTH TATUM BLVD | PHOENIX, AZ

©2026 Cushman & Wakefield. All rights reserved. The information contained in this communication is strictly confidential. This information has been obtained from sources believed to be reliable but has not been verified. NO WARRANTY OR REPRESENTATION, EXPRESS OR IMPLIED, IS MADE AS TO THE CONDITION OF THE PROPERTY (OR PROPERTIES) REFERENCED HEREIN OR AS TO THE ACCURACY OR COMPLETENESS OF THE INFORMATION CONTAINED HEREIN, AND SAME IS SUBMITTED SUBJECT TO ERRORS, OMISSIONS, CHANGE OF PRICE, RENTAL OR OTHER CONDITIONS, WITHDRAWAL WITHOUT NOTICE, AND TO ANY SPECIAL LISTING CONDITIONS IMPOSED BY THE PROPERTY OWNER(S). ANY PROJECTIONS, OPINIONS OR ESTIMATES ARE SUBJECT TO UNCERTAINTY AND DO NOT SIGNIFY CURRENT OR FUTURE PROPERTY PERFORMANCE. COE-PM-West-04.22.2026



TATUM RIDGE

FOR LEASING INFO
PLEASE CONTACT:

SHEILA BALE

Managing Director

+1 602 224 4454

sheila.bale@cushwake.com

DREW SAMPSON

Director

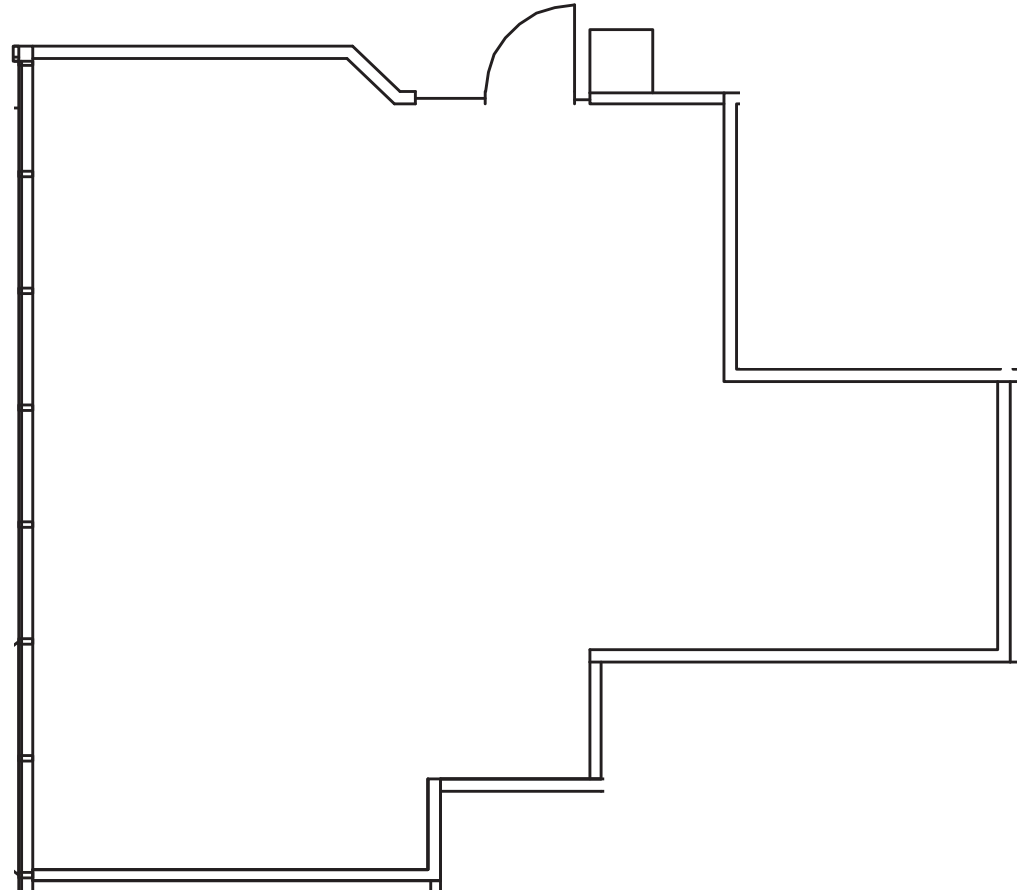
+1 602 468 8521

drew.sampson@cushwake.com



2555 E Camelback Rd, Suite 400
Phoenix, Arizona 85016
Main +1 602 954 9000
Fax +1 602 253 0528
cushmanwakefield.com

11211 N TATUM BLVD
SUITE A215 | 946 RSF



11209 - 11211 NORTH TATUM BLVD | PHOENIX, AZ

©2026 Cushman & Wakefield. All rights reserved. The information contained in this communication is strictly confidential. This information has been obtained from sources believed to be reliable but has not been verified. NO WARRANTY OR REPRESENTATION, EXPRESS OR IMPLIED, IS MADE AS TO THE CONDITION OF THE PROPERTY (OR PROPERTIES) REFERENCED HEREIN OR AS TO THE ACCURACY OR COMPLETENESS OF THE INFORMATION CONTAINED HEREIN, AND SAME IS SUBMITTED SUBJECT TO ERRORS, OMISSIONS, CHANGE OF PRICE, RENTAL OR OTHER CONDITIONS, WITHDRAWAL WITHOUT NOTICE, AND TO ANY SPECIAL LISTING CONDITIONS IMPOSED BY THE PROPERTY OWNER(S). ANY PROJECTIONS, OPINIONS OR ESTIMATES ARE SUBJECT TO UNCERTAINTY AND DO NOT SIGNIFY CURRENT OR FUTURE PROPERTY PERFORMANCE. COE-PM-West-04.22.2026



TATUM RIDGE

FOR LEASING INFO
PLEASE CONTACT:

SHEILA BALE

Managing Director

+1 602 224 4454

sheila.bale@cushwake.com

DREW SAMPSON

Director

+1 602 468 8521

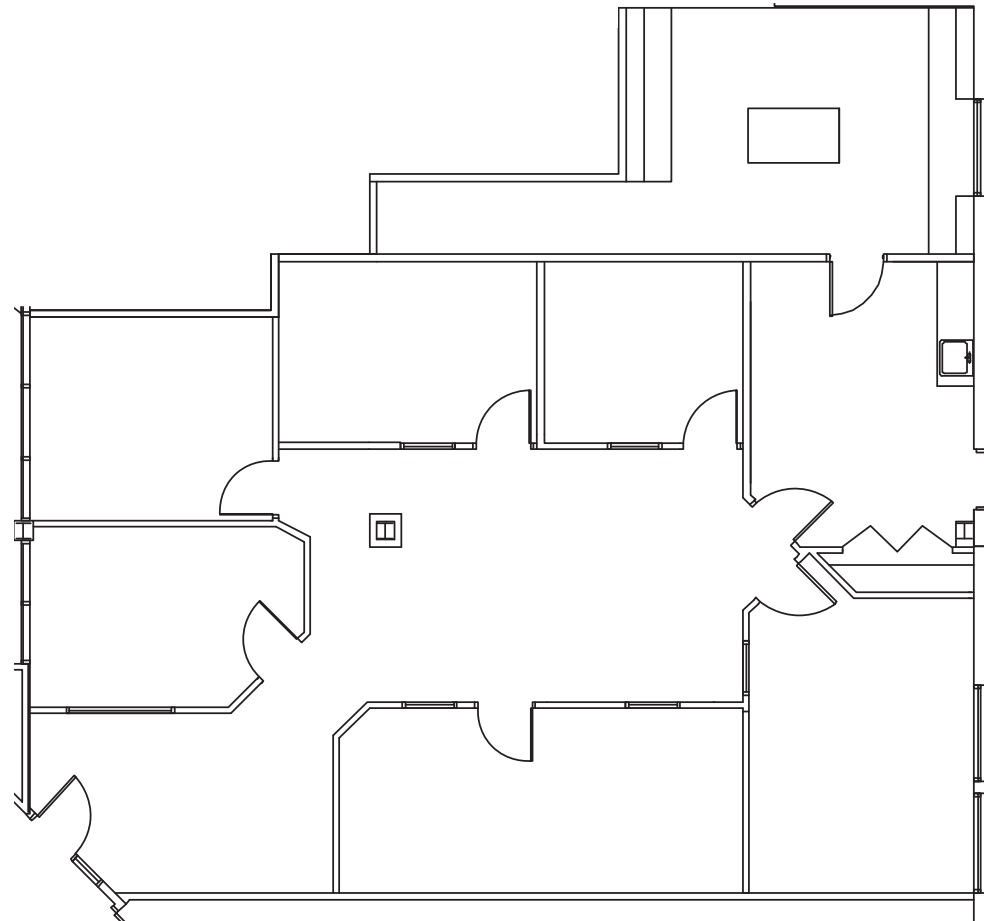
drew.sampson@cushwake.com



**CUSHMAN &
WAKEFIELD**

2555 E Camelback Rd, Suite 400
Phoenix, Arizona 85016
Main +1 602 954 9000
Fax +1 602 253 0528
cushmanwakefield.com

11211 N TATUM BLVD
SUITE A220 | 2,891 RSF



11209 - 11211 NORTH TATUM BLVD | PHOENIX, AZ

©2026 Cushman & Wakefield. All rights reserved. The information contained in this communication is strictly confidential. This information has been obtained from sources believed to be reliable but has not been verified. NO WARRANTY OR REPRESENTATION, EXPRESS OR IMPLIED, IS MADE AS TO THE CONDITION OF THE PROPERTY (OR PROPERTIES) REFERENCED HEREIN OR AS TO THE ACCURACY OR COMPLETENESS OF THE INFORMATION CONTAINED HEREIN, AND SAME IS SUBMITTED SUBJECT TO ERRORS, OMISSIONS, CHANGE OF PRICE, RENTAL OR OTHER CONDITIONS, WITHDRAWAL WITHOUT NOTICE, AND TO ANY SPECIAL LISTING CONDITIONS IMPOSED BY THE PROPERTY OWNER(S). ANY PROJECTIONS, OPINIONS OR ESTIMATES ARE SUBJECT TO UNCERTAINTY AND DO NOT SIGNIFY CURRENT OR FUTURE PROPERTY PERFORMANCE. COE-PM-West-04.22.2026



TATUM RIDGE

FOR LEASING INFO
PLEASE CONTACT:

SHEILA BALE

Managing Director

+1 602 224 4454

sheila.bale@cushwake.com

DREW SAMPSON

Director

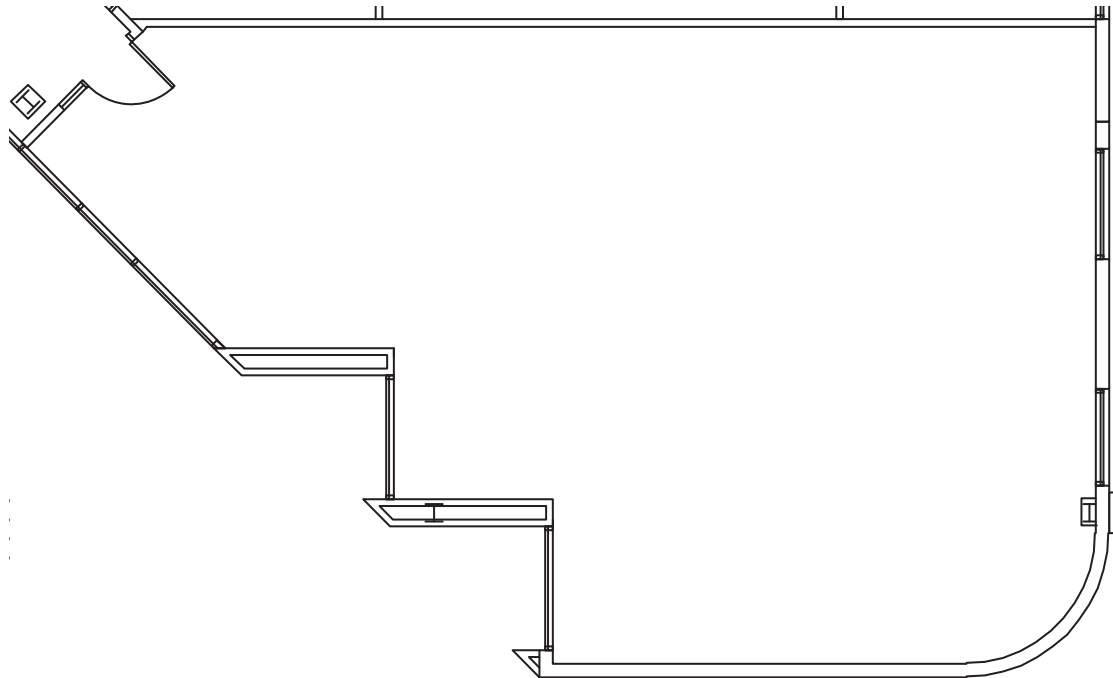
+1 602 468 8521

drew.sampson@cushwake.com



2555 E Camelback Rd, Suite 400
Phoenix, Arizona 85016
Main +1 602 954 9000
Fax +1 602 253 0528
cushmanwakefield.com

11211 N TATUM BLVD
SUITE A250 | 1,699 RSF



11209 - 11211 NORTH TATUM BLVD | PHOENIX, AZ

©2026 Cushman & Wakefield. All rights reserved. The information contained in this communication is strictly confidential. This information has been obtained from sources believed to be reliable but has not been verified. NO WARRANTY OR REPRESENTATION, EXPRESS OR IMPLIED, IS MADE AS TO THE CONDITION OF THE PROPERTY (OR PROPERTIES) REFERENCED HEREIN OR AS TO THE ACCURACY OR COMPLETENESS OF THE INFORMATION CONTAINED HEREIN, AND SAME IS SUBMITTED SUBJECT TO ERRORS, OMISSIONS, CHANGE OF PRICE, RENTAL OR OTHER CONDITIONS, WITHDRAWAL WITHOUT NOTICE, AND TO ANY SPECIAL LISTING CONDITIONS IMPOSED BY THE PROPERTY OWNER(S). ANY PROJECTIONS, OPINIONS OR ESTIMATES ARE SUBJECT TO UNCERTAINTY AND DO NOT SIGNIFY CURRENT OR FUTURE PROPERTY PERFORMANCE. COE-PM-West-04.22.2026



TATUM RIDGE

FOR LEASING INFO
PLEASE CONTACT:

SHEILA BALE

Managing Director

+1 602 224 4454

sheila.bale@cushwake.com

DREW SAMPSON

Director

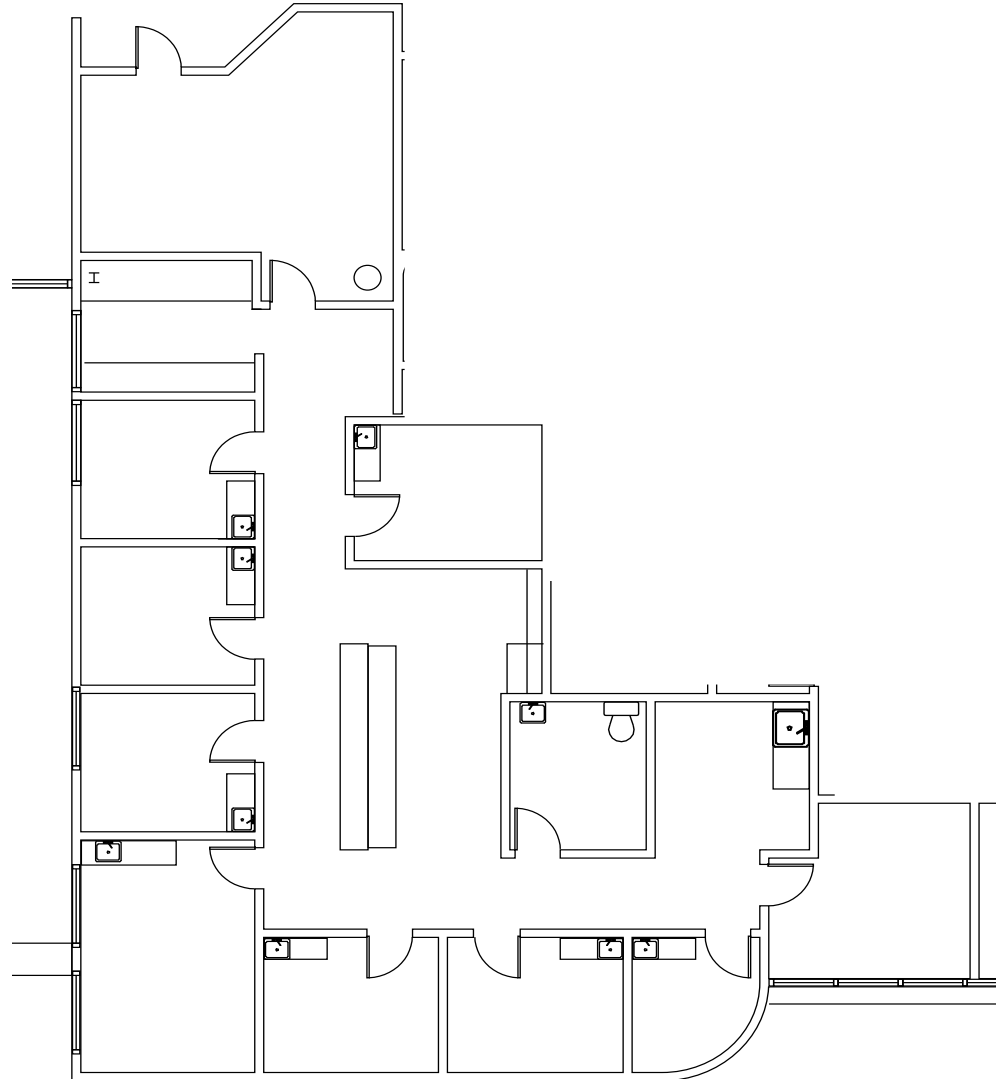
+1 602 468 8521

drew.sampson@cushwake.com



2555 E Camelback Rd, Suite 400
Phoenix, Arizona 85016
Main +1 602 954 9000
Fax +1 602 253 0528
cushmanwakefield.com

11209 N TATUM BLVD
SUITE B170 | 2,452 RSF



11209 - 11211 NORTH TATUM BLVD | PHOENIX, AZ

©2026 Cushman & Wakefield. All rights reserved. The information contained in this communication is strictly confidential. This information has been obtained from sources believed to be reliable but has not been verified. NO WARRANTY OR REPRESENTATION, EXPRESS OR IMPLIED, IS MADE AS TO THE CONDITION OF THE PROPERTY (OR PROPERTIES) REFERENCED HEREIN OR AS TO THE ACCURACY OR COMPLETENESS OF THE INFORMATION CONTAINED HEREIN, AND SAME IS SUBMITTED SUBJECT TO ERRORS, OMISSIONS, CHANGE OF PRICE, RENTAL OR OTHER CONDITIONS, WITHDRAWAL WITHOUT NOTICE, AND TO ANY SPECIAL LISTING CONDITIONS IMPOSED BY THE PROPERTY OWNER(S). ANY PROJECTIONS, OPINIONS OR ESTIMATES ARE SUBJECT TO UNCERTAINTY AND DO NOT SIGNIFY CURRENT OR FUTURE PROPERTY PERFORMANCE. COE-PM-West-04.22.2026



TATUM RIDGE

FOR LEASING INFO
PLEASE CONTACT:

SHEILA BALE

Managing Director

+1 602 224 4454

sheila.bale@cushwake.com

DREW SAMPSON

Director

+1 602 468 8521

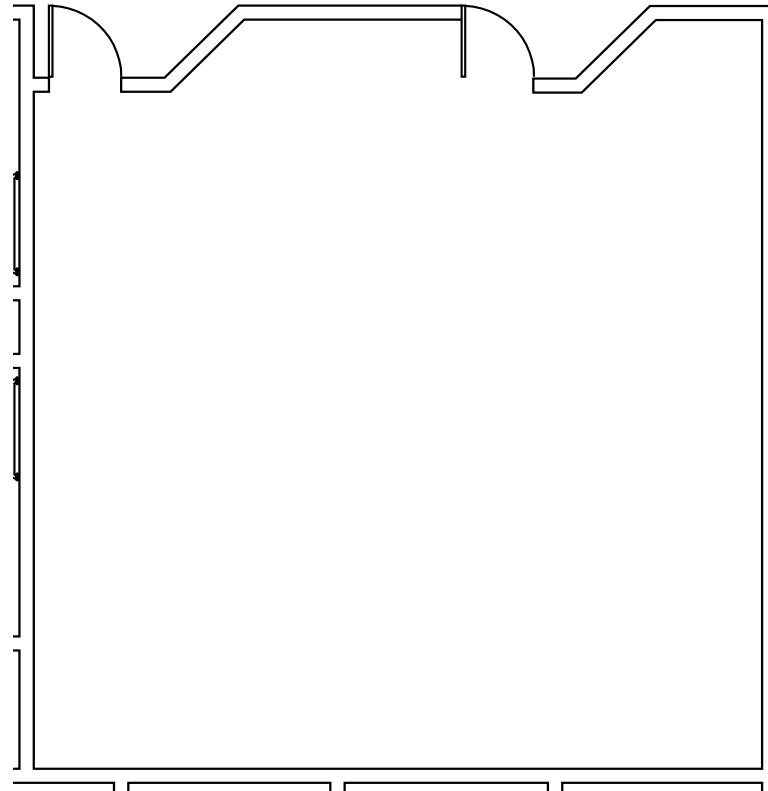
drew.sampson@cushwake.com



**CUSHMAN &
WAKEFIELD**

2555 E Camelback Rd, Suite 400
Phoenix, Arizona 85016
Main +1 602 954 9000
Fax +1 602 253 0528
cushmanwakefield.com

11209 N TATUM BLVD
SUITE B190 | 754 RSF



11209 - 11211 NORTH TATUM BLVD | PHOENIX, AZ

©2026 Cushman & Wakefield. All rights reserved. The information contained in this communication is strictly confidential. This information has been obtained from sources believed to be reliable but has not been verified. NO WARRANTY OR REPRESENTATION, EXPRESS OR IMPLIED, IS MADE AS TO THE CONDITION OF THE PROPERTY (OR PROPERTIES) REFERENCED HEREIN OR AS TO THE ACCURACY OR COMPLETENESS OF THE INFORMATION CONTAINED HEREIN, AND SAME IS SUBMITTED SUBJECT TO ERRORS, OMISSIONS, CHANGE OF PRICE, RENTAL OR OTHER CONDITIONS, WITHDRAWAL WITHOUT NOTICE, AND TO ANY SPECIAL LISTING CONDITIONS IMPOSED BY THE PROPERTY OWNER(S). ANY PROJECTIONS, OPINIONS OR ESTIMATES ARE SUBJECT TO UNCERTAINTY AND DO NOT SIGNIFY CURRENT OR FUTURE PROPERTY PERFORMANCE. COE-PM-West-04.22.2026



TATUM RIDGE

FOR LEASING INFO
PLEASE CONTACT:

SHEILA BALE

Managing Director

+1 602 224 4454

sheila.bale@cushwake.com

DREW SAMPSON

Director

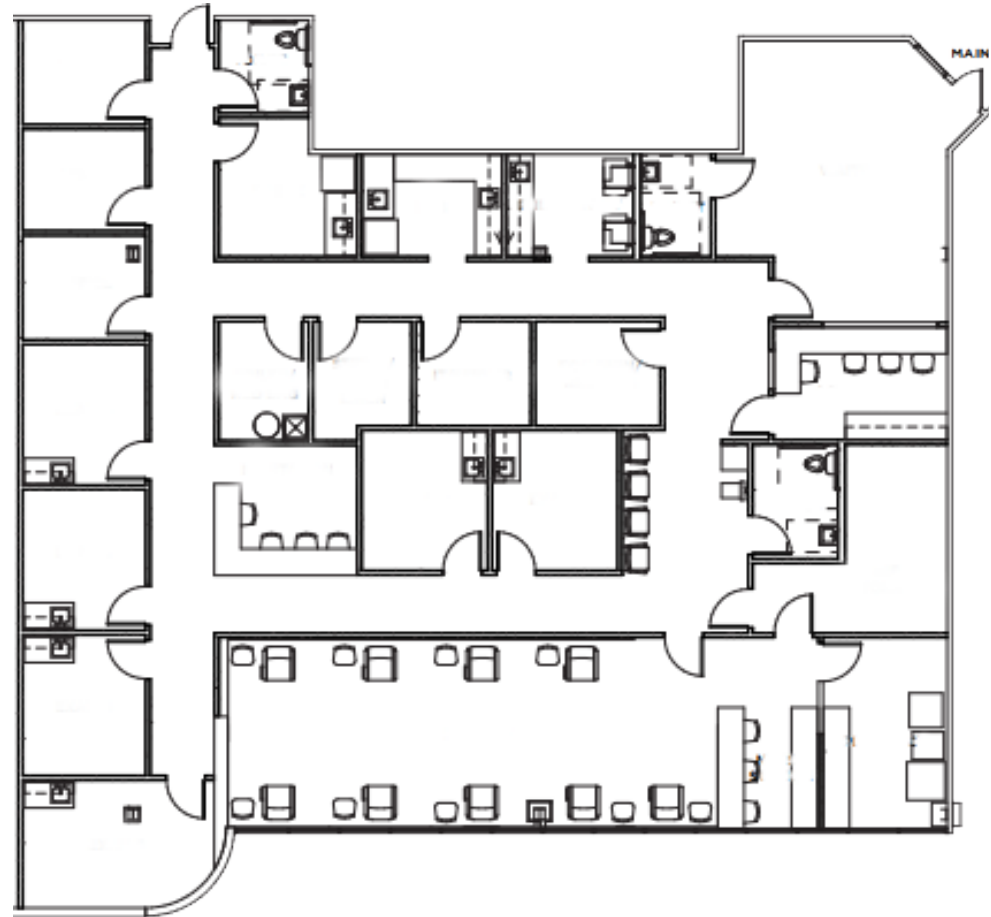
+1 602 468 8521

drew.sampson@cushwake.com



2555 E Camelback Rd, Suite 400
Phoenix, Arizona 85016
Main +1 602 954 9000
Fax +1 602 253 0528
cushmanwakefield.com

11209 N TATUM BLVD
SUITE B200 | 5,210 RSF



11209 - 11211 NORTH TATUM BLVD | PHOENIX, AZ

©2026 Cushman & Wakefield. All rights reserved. The information contained in this communication is strictly confidential. This information has been obtained from sources believed to be reliable but has not been verified. NO WARRANTY OR REPRESENTATION, EXPRESS OR IMPLIED, IS MADE AS TO THE CONDITION OF THE PROPERTY (OR PROPERTIES) REFERENCED HEREIN OR AS TO THE ACCURACY OR COMPLETENESS OF THE INFORMATION CONTAINED HEREIN, AND SAME IS SUBMITTED SUBJECT TO ERRORS, OMISSIONS, CHANGE OF PRICE, RENTAL OR OTHER CONDITIONS, WITHDRAWAL WITHOUT NOTICE, AND TO ANY SPECIAL LISTING CONDITIONS IMPOSED BY THE PROPERTY OWNER(S). ANY PROJECTIONS, OPINIONS OR ESTIMATES ARE SUBJECT TO UNCERTAINTY AND DO NOT SIGNIFY CURRENT OR FUTURE PROPERTY PERFORMANCE. COE-PM-West-04.22.2026



TATUM RIDGE

FOR LEASING INFO
PLEASE CONTACT:

SHEILA BALE

Managing Director

+1 602 224 4454

sheila.bale@cushwake.com

DREW SAMPSON

Director

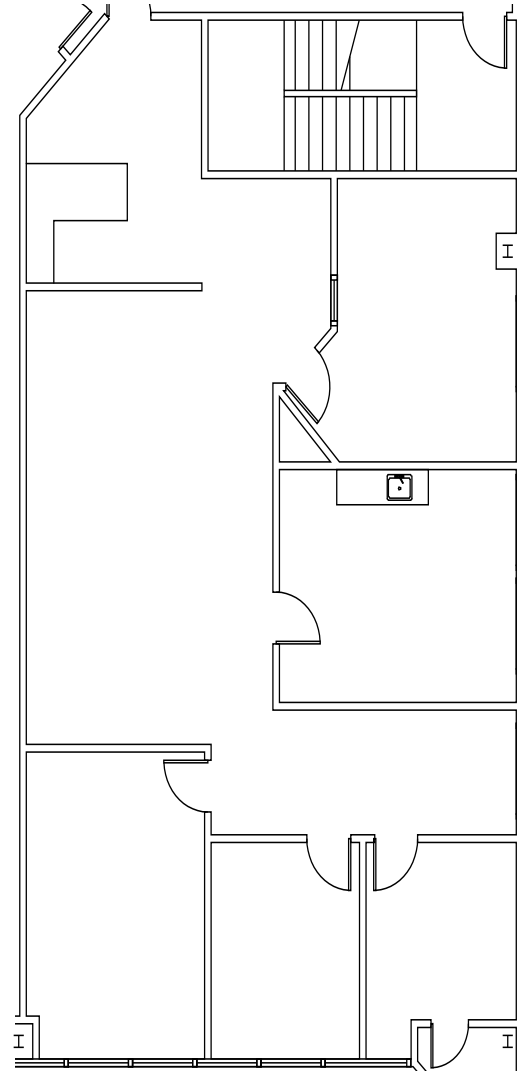
+1 602 468 8521

drew.sampson@cushwake.com



2555 E Camelback Rd, Suite 400
Phoenix, Arizona 85016
Main +1 602 954 9000
Fax +1 602 253 0528
cushmanwakefield.com

11209 N TATUM BLVD
SUITE B208 | 1,944 RSF



11209 - 11211 NORTH TATUM BLVD | PHOENIX, AZ

©2026 Cushman & Wakefield. All rights reserved. The information contained in this communication is strictly confidential. This information has been obtained from sources believed to be reliable but has not been verified. NO WARRANTY OR REPRESENTATION, EXPRESS OR IMPLIED, IS MADE AS TO THE CONDITION OF THE PROPERTY (OR PROPERTIES) REFERENCED HEREIN OR AS TO THE ACCURACY OR COMPLETENESS OF THE INFORMATION CONTAINED HEREIN, AND SAME IS SUBMITTED SUBJECT TO ERRORS, OMISSIONS, CHANGE OF PRICE, RENTAL OR OTHER CONDITIONS, WITHDRAWAL WITHOUT NOTICE, AND TO ANY SPECIAL LISTING CONDITIONS IMPOSED BY THE PROPERTY OWNER(S). ANY PROJECTIONS, OPINIONS OR ESTIMATES ARE SUBJECT TO UNCERTAINTY AND DO NOT SIGNIFY CURRENT OR FUTURE PROPERTY PERFORMANCE. COE-PM-West-04.22.2026



TATUM RIDGE

FOR LEASING INFO
PLEASE CONTACT:

SHEILA BALE

Managing Director

+1 602 224 4454

sheila.bale@cushwake.com

DREW SAMPSON

Director

+1 602 468 8521

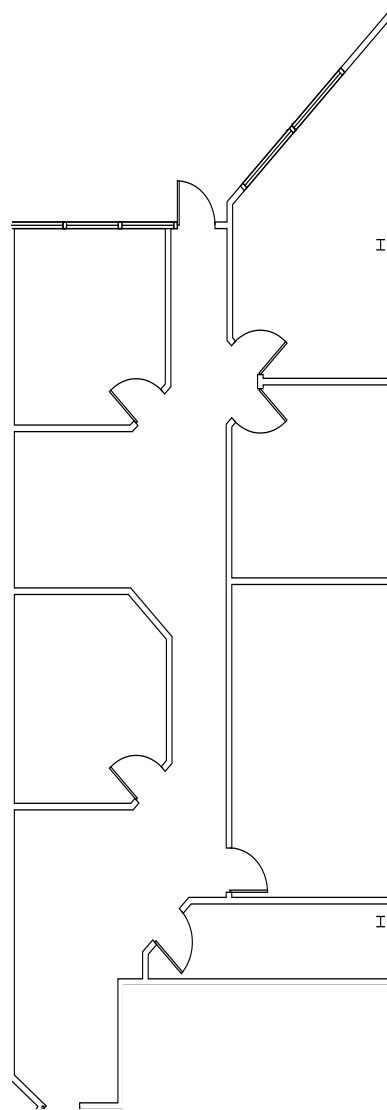
drew.sampson@cushwake.com



**CUSHMAN &
WAKEFIELD**

2555 E Camelback Rd, Suite 400
Phoenix, Arizona 85016
Main +1 602 954 9000
Fax +1 602 253 0528
cushmanwakefield.com

11209 N TATUM BLVD
SUITE B210 | 1,819 RSF



11209 - 11211 NORTH TATUM BLVD | PHOENIX, AZ

©2026 Cushman & Wakefield. All rights reserved. The information contained in this communication is strictly confidential. This information has been obtained from sources believed to be reliable but has not been verified. NO WARRANTY OR REPRESENTATION, EXPRESS OR IMPLIED, IS MADE AS TO THE CONDITION OF THE PROPERTY (OR PROPERTIES) REFERENCED HEREIN OR AS TO THE ACCURACY OR COMPLETENESS OF THE INFORMATION CONTAINED HEREIN, AND SAME IS SUBMITTED SUBJECT TO ERRORS, OMISSIONS, CHANGE OF PRICE, RENTAL OR OTHER CONDITIONS, WITHDRAWAL WITHOUT NOTICE, AND TO ANY SPECIAL LISTING CONDITIONS IMPOSED BY THE PROPERTY OWNER(S). ANY PROJECTIONS, OPINIONS OR ESTIMATES ARE SUBJECT TO UNCERTAINTY AND DO NOT SIGNIFY CURRENT OR FUTURE PROPERTY PERFORMANCE. COE-PM-West-04.22.2026



TATUM RIDGE

FOR LEASING INFO
PLEASE CONTACT:

SHEILA BALE

Managing Director

+1 602 224 4454

sheila.bale@cushwake.com

DREW SAMPSON

Director

+1 602 468 8521

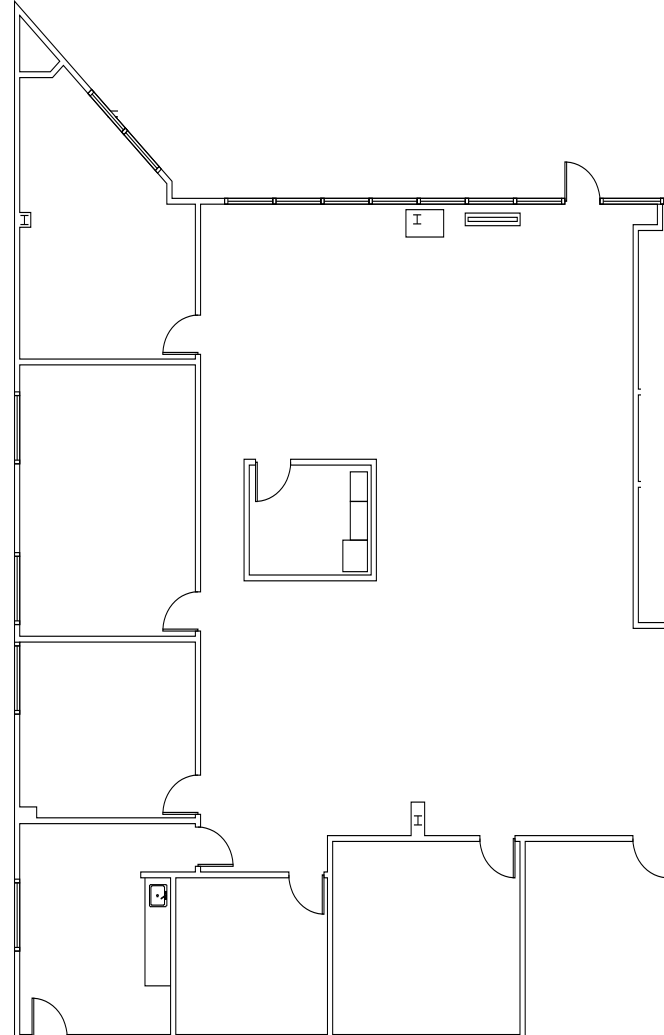
drew.sampson@cushwake.com



**CUSHMAN &
WAKEFIELD**

2555 E Camelback Rd, Suite 400
Phoenix, Arizona 85016
Main +1 602 954 9000
Fax +1 602 253 0528
cushmanwakefield.com

11209 N TATUM BLVD
SUITE B230 | 3,587 RSF



11209 - 11211 NORTH TATUM BLVD | PHOENIX, AZ

©2026 Cushman & Wakefield. All rights reserved. The information contained in this communication is strictly confidential. This information has been obtained from sources believed to be reliable but has not been verified. NO WARRANTY OR REPRESENTATION, EXPRESS OR IMPLIED, IS MADE AS TO THE CONDITION OF THE PROPERTY (OR PROPERTIES) REFERENCED HEREIN OR AS TO THE ACCURACY OR COMPLETENESS OF THE INFORMATION CONTAINED HEREIN, AND SAME IS SUBMITTED SUBJECT TO ERRORS, OMISSIONS, CHANGE OF PRICE, RENTAL OR OTHER CONDITIONS, WITHDRAWAL WITHOUT NOTICE, AND TO ANY SPECIAL LISTING CONDITIONS IMPOSED BY THE PROPERTY OWNER(S). ANY PROJECTIONS, OPINIONS OR ESTIMATES ARE SUBJECT TO UNCERTAINTY AND DO NOT SIGNIFY CURRENT OR FUTURE PROPERTY PERFORMANCE. COE-PM-West-04.22.2026



TATUM RIDGE

FOR LEASING INFO
PLEASE CONTACT:

SHEILA BALE

Managing Director

+1 602 224 4454

sheila.bale@cushwake.com

DREW SAMPSON

Director

+1 602 468 8521

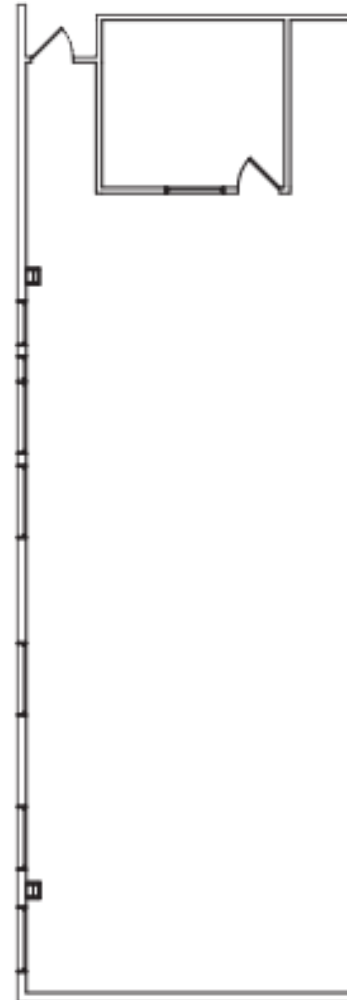
drew.sampson@cushwake.com



**CUSHMAN &
WAKEFIELD**

2555 E Camelback Rd, Suite 400
Phoenix, Arizona 85016
Main +1 602 954 9000
Fax +1 602 253 0528
cushmanwakefield.com

11209 N TATUM BLVD
SUITE B240 | 1,986 RSF



11209 - 11211 NORTH TATUM BLVD | PHOENIX, AZ

©2026 Cushman & Wakefield. All rights reserved. The information contained in this communication is strictly confidential. This information has been obtained from sources believed to be reliable but has not been verified. NO WARRANTY OR REPRESENTATION, EXPRESS OR IMPLIED, IS MADE AS TO THE CONDITION OF THE PROPERTY (OR PROPERTIES) REFERENCED HEREIN OR AS TO THE ACCURACY OR COMPLETENESS OF THE INFORMATION CONTAINED HEREIN, AND SAME IS SUBMITTED SUBJECT TO ERRORS, OMISSIONS, CHANGE OF PRICE, RENTAL OR OTHER CONDITIONS, WITHDRAWAL WITHOUT NOTICE, AND TO ANY SPECIAL LISTING CONDITIONS IMPOSED BY THE PROPERTY OWNER(S). ANY PROJECTIONS, OPINIONS OR ESTIMATES ARE SUBJECT TO UNCERTAINTY AND DO NOT SIGNIFY CURRENT OR FUTURE PROPERTY PERFORMANCE. COE-PM-West-04.22.2026