



235 East 49th St
New York, NY 10017



235 East 49TH

NEW AMSTERDAM
TEAM

Edward Kalisvaart
Lic. Assoc. RE Broker
EdwardK@kw.com
(646) 321-4311



- Welcome to 235 East 49th Street, located between 2nd and 3rd Avenue, an extraordinary opportunity in
- Midtown Manhattan! This co-op building presents a unique opportunity to purchase a duplex professional unit.

Lay out:

- Waiting / reception area
- Four bay treatment area
- Three private treatment rooms
- Two offices
- X-ray room
- Spinal decompression area
- Two full and one half bathroom

Various equipment available.

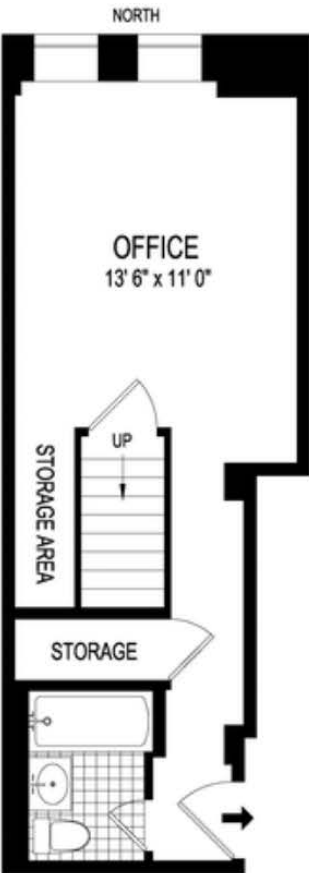
Size	1,500 RSF
Price	\$765,000
Maint.	3,500/month

235 E 49th St,
New York, NY 10017

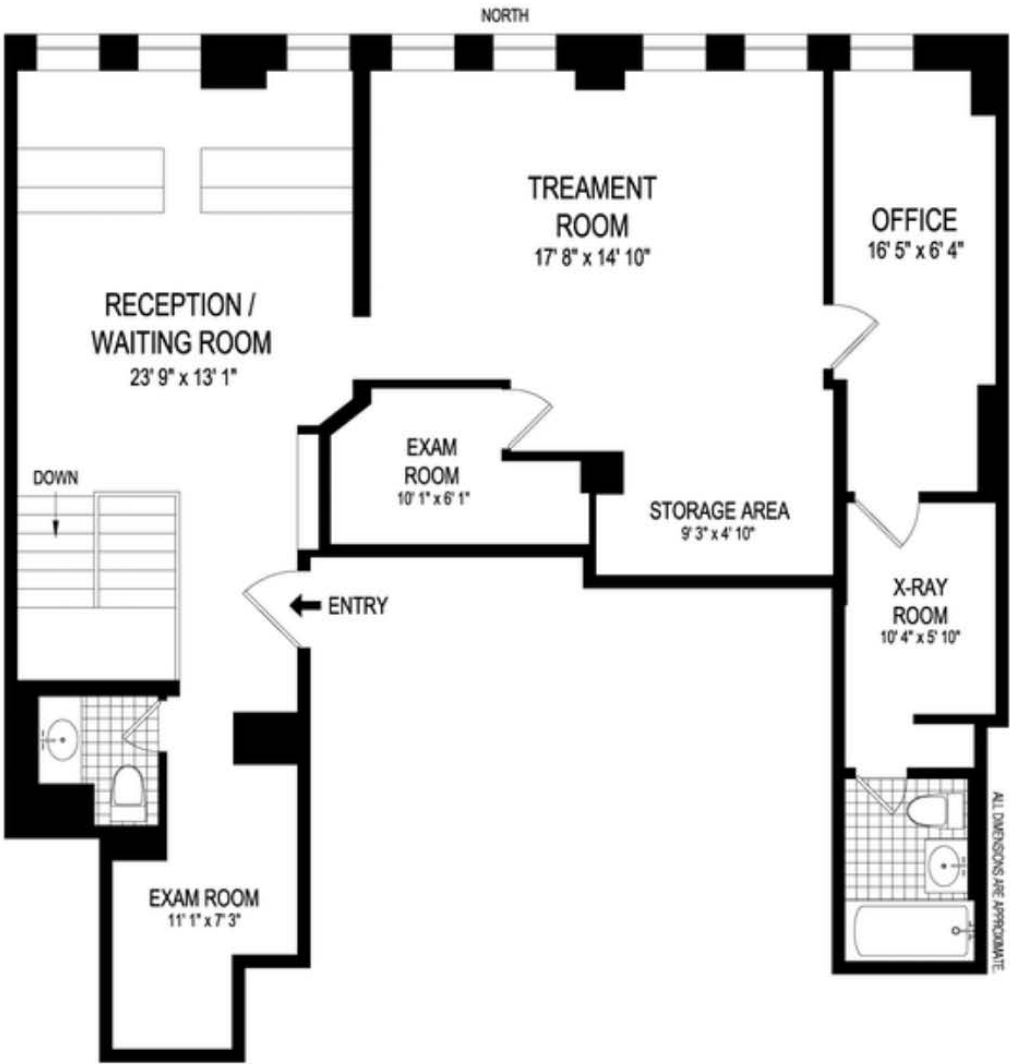


Floor Plan

LOWER LEVEL:



ENRTY LEVEL:



235 E 49th St,
New York, NY 10017



Edward Kalisvaart
Lic. Assoc. RE Broker
EdwardK@kw.com
(646) 321-4311

NEW AMSTERDAM
TEAM

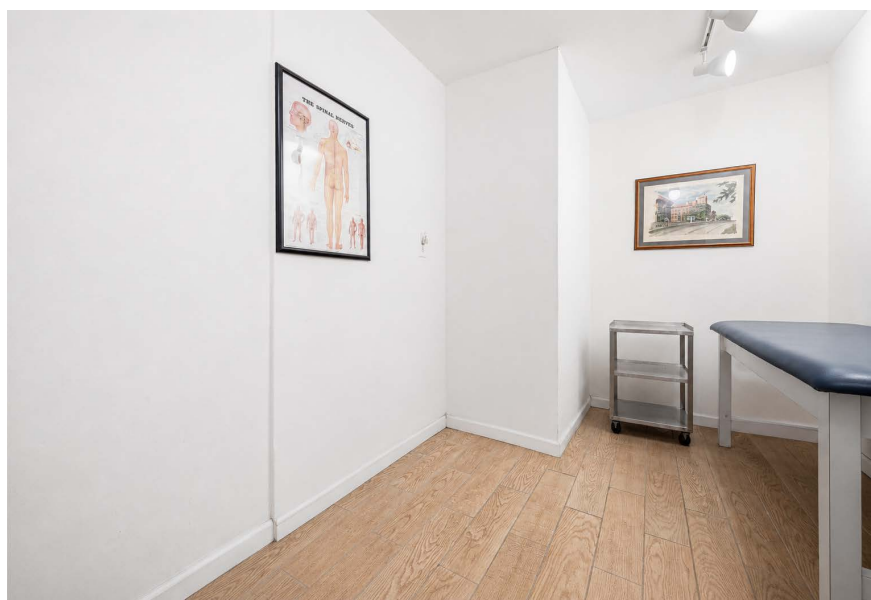
235 E 49th St,
New York, NY 10017



Edward Kalisvaart
Lic. Assoc. RE Broker
EdwardK@kw.com
(646) 321-4311

NEW AMSTERDAM
TEAM

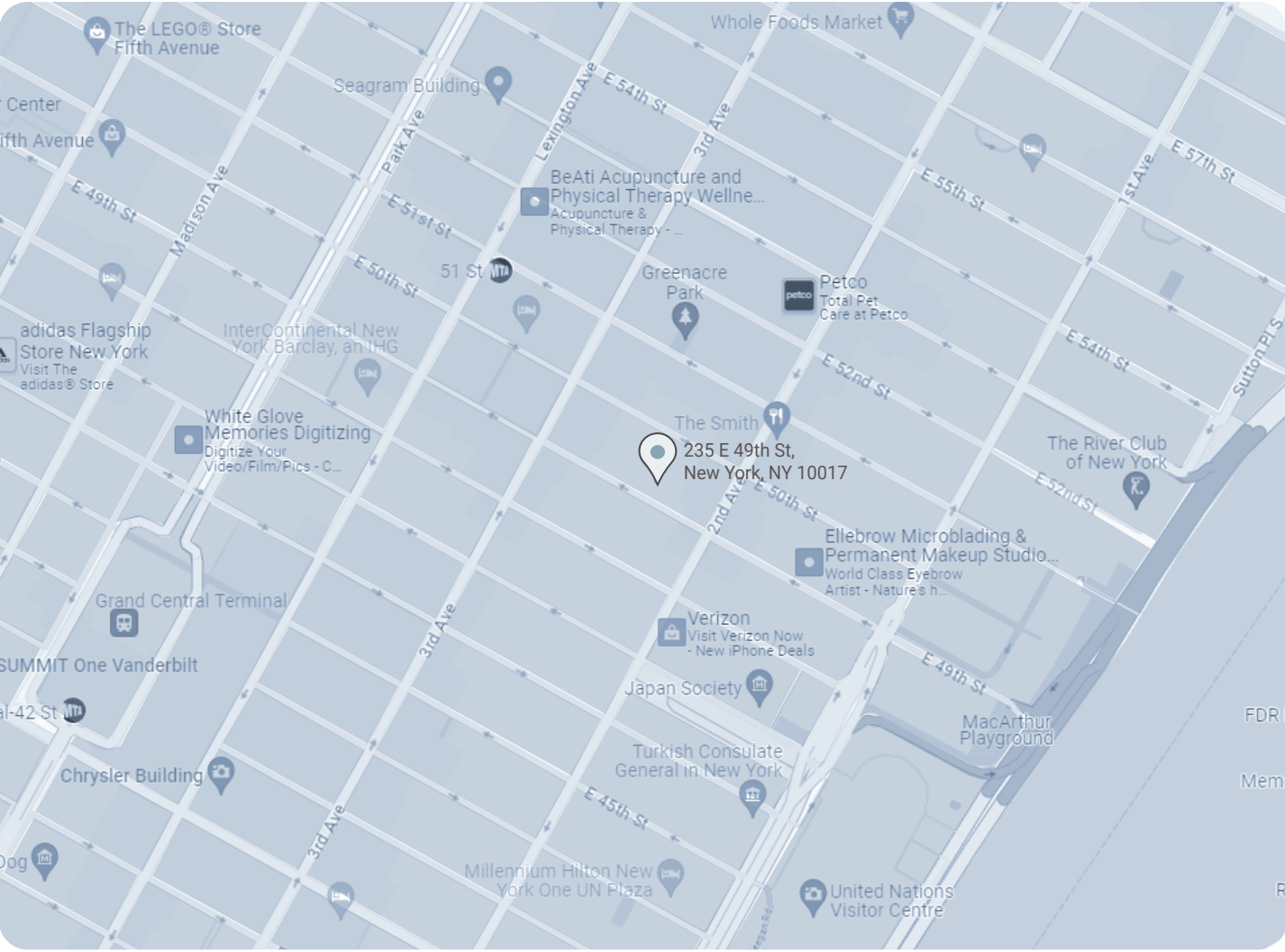
235 E 49th St,
New York, NY 10017



Edward Kalisvaart
Lic. Assoc. RE Broker
EdwardK@kw.com
(646) 321-4311

NEW AMSTERDAM
TEAM

235 E 49th St, New York, NY 10017



Edward Kalisvaart
Lic. Associate R.E. Broker
EdwardK@kw.com
646 321 4311

NEW AMSTERDAM
TEAM

235 E 49th St,
New York, NY 10017

NEW AMSTERDAM

TEAM at Keller Williams NYC

Edward Kalisvaart
Licensed Associate Real Estate Broker
EdwardK@KW.com
(646) 321-4311

360 Madison Ave, New York, NY 10017
Each office is independently owned and operated.

