

COUNTY OF SAN DIEGO TRACT 4249-3

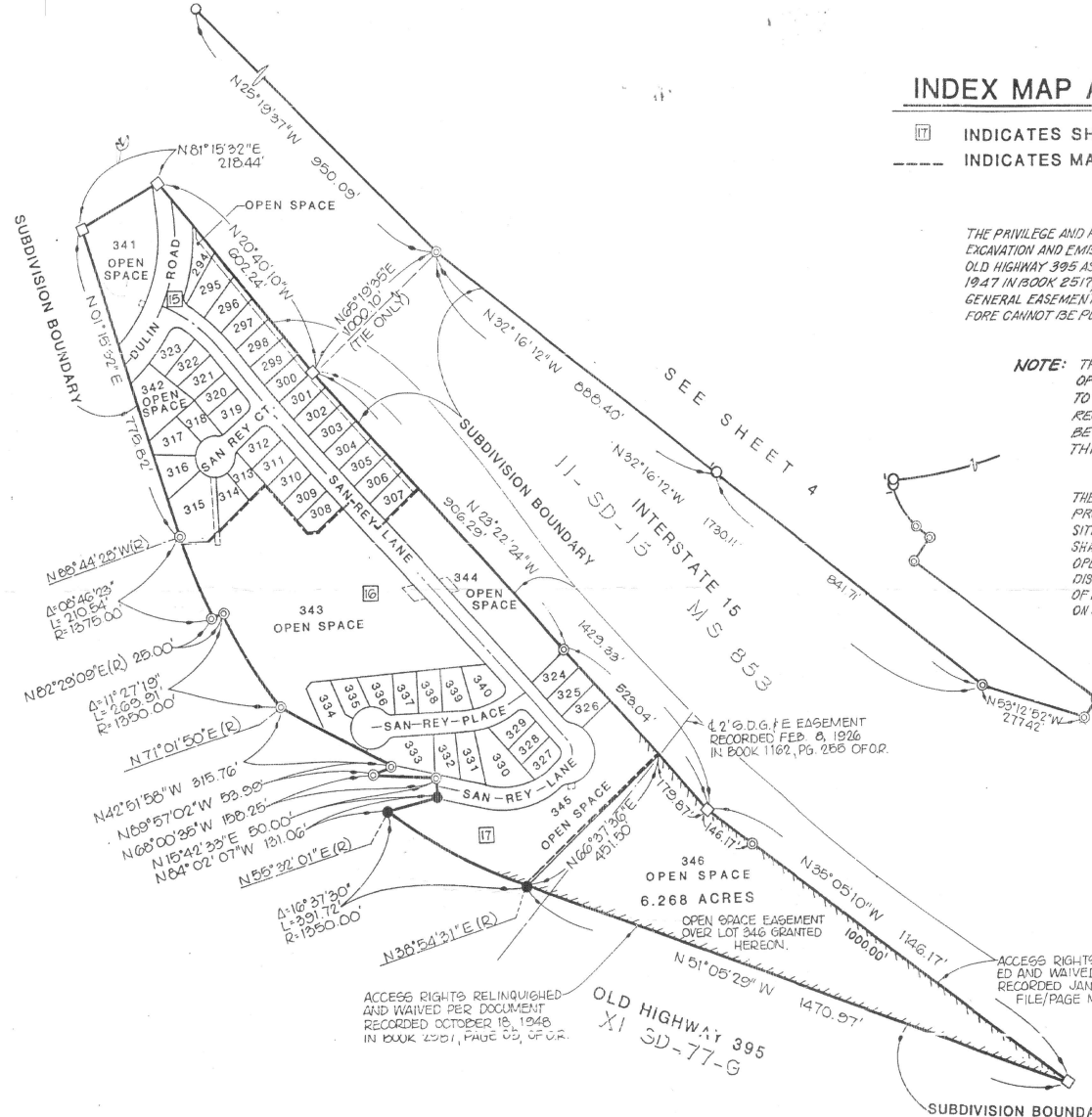
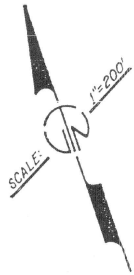
INDEX MAP AND LOT 346

- IT INDICATES SHEET NUMBER
- INDICATES MATCHLINE BETWEEN SHEETS

THE PRIVILEGE AND RIGHT TO EXTEND DRAINAGE STRUCTURES, EXCAVATION AND EMBANKMENT SLOPES BEYOND THE LIMITS OF OLD HIGHWAY 395 AS GRANTED IN DEED RECORDED OCTOBS 7, 1947 IN BOOK 2517, PAGE 50 OF OFFICIAL RECORDS IS A GENERAL EASEMENT WITHOUT DEFINITE LOCATION AND THEREFORE CANNOT BE PLOTTED ON THE MAP.

NOTE: THE LOCATION OF AN EASEMENT FOR ACCESS AND DEVELOPMENT OF WATER, WELLSITES, WATER WORKS AND INCIDENTAL PURPOSES TO SAN LUIS REY MUNICIPAL WATER DISTRICT PER DOCUMENT RECORDED OCT. 7, 1983 AS FILE NO. 83-362222 OF O.R., CANNOT BE DETERMINED FROM SAID DOCUMENT, AND IS NOT SHOWN ON THIS MAP.

THE OPEN EASEMENTS OVER LOTS 343, 344 AND 346 ARE INTENDED TO PROTECT THE SENSITIVE HABITAT LANDS/WETLANDS PORTION OF THE SITE AND NO BUILDING, STRUCTURES OR OTHER THINGS WHATSOEVER SHALL BE CONSTRUCTED, ERECTED, PLACED OR MAINTAINED IN SAID OPEN SPACE EASEMENT, INCLUDING THE ADDITION OR REMOVAL OR DISTURBANCE OF SOIL OR VEGETATION, UNLESS BY WRITTEN ORDER OF A FIRE MARSHAL FOR THE PURPOSE OF NECESSARY FIRE CONTROL ON SUBJECT EASEMENTS.



RANCHO MONSERATE MAP NO. 827

PRECISION
SEP 05 1991
MICROFILMED

