

# FOR LEASE

556 Lilly Road SE  
Olympia, WA 98501



GREAT FOR MEDICAL PRACTICES



## 556 LILLY ROAD SE | BUILDING

First Western Properties—Tacoma Inc. | 253.472.0404  
6402 Tacoma Mall Blvd, Tacoma, WA 98409 | fwp-inc.com

# AVAILABLE

6,256 SF    \$19.00 SF + \$5.64 NNN

Space can be demised to 3,969 SF / 1,914 SF

- **High-visibility building** in a thriving commercial district with easy highway access.
- **Prominent signage** options to enhance visibility and business presence.
- **Access** from signalized intersection from Lilly Road SE - 15,443 CPD
- **Drive-through window**
- **High-Traffic Location** – Positioned in a vibrant area with strong foot traffic and easy accessibility.
- **Ample parking** with 40+ parking spaces.
- **Surrounded** by offices, medical facilities, and residential areas, driving consistent customer flow.



Population



Average HH Income



Daytime Population

Regis - 2025

	Population	Average HH Income	Daytime Population
Mile 1	9,333	\$73,922	13,162
Mile 3	69,533	\$110,388	63,515
Mile 5	167,207	\$112,777	121,820

# NEARBY TENANTS

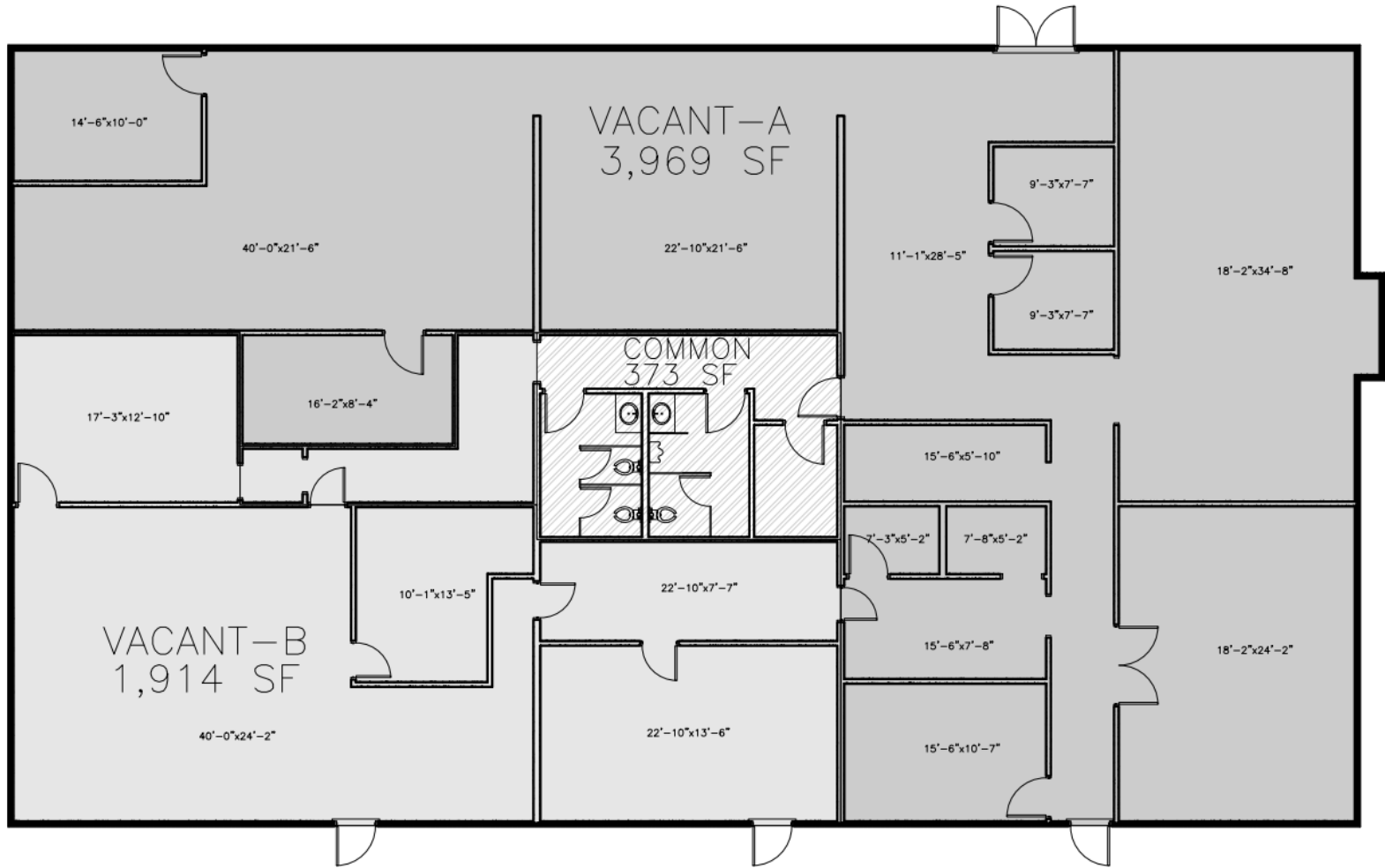
## MEDICAL TENANTS (WITHIN 1 MILE)



## RETAIL TENANTS



# FLOOR PLAN

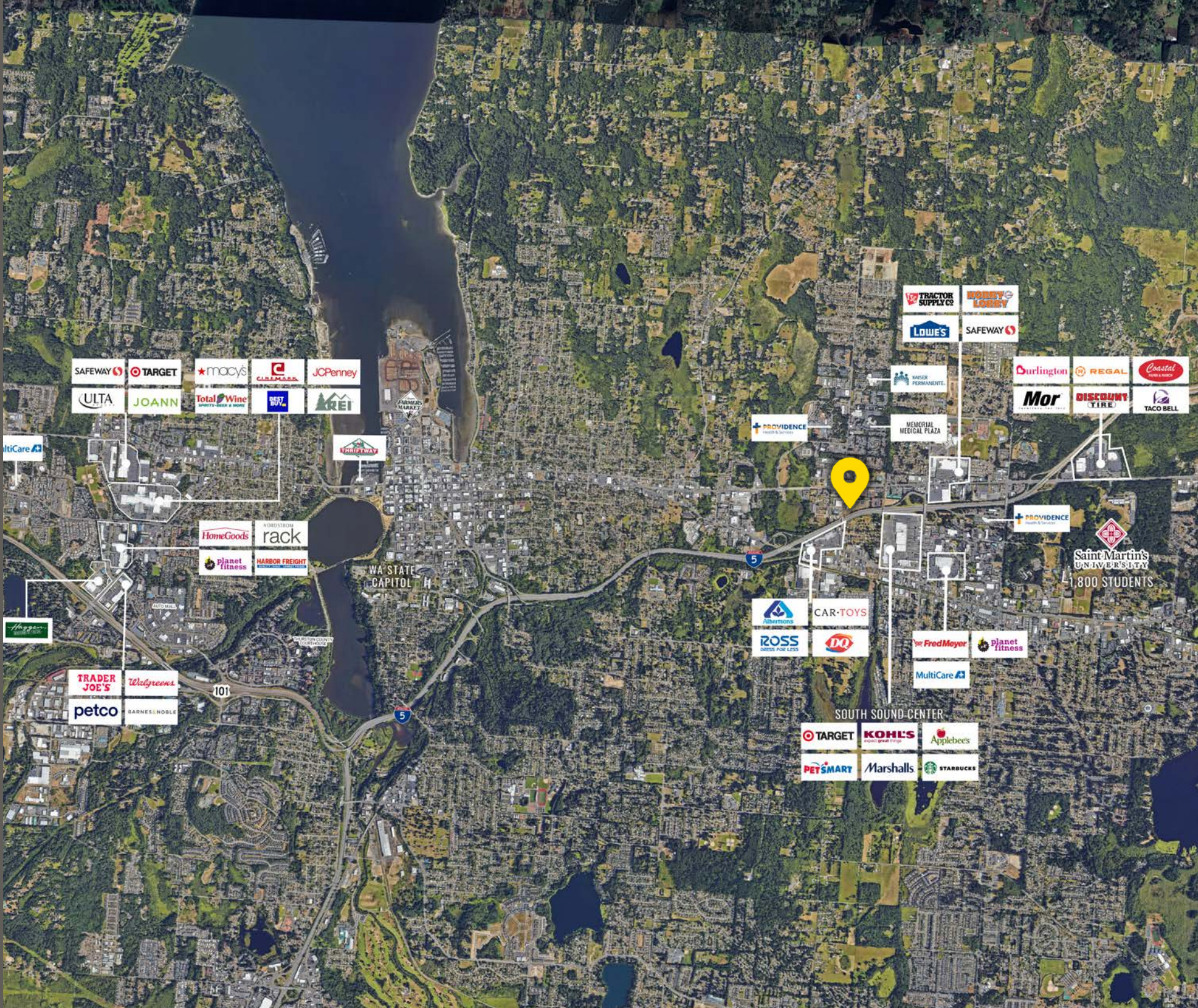


SPACE A	-	3,969 SF
SPACE B	-	1,914 SF
COMMON	-	373 SF
TOTAL	-	6,256 SF

SUMMARY




# LOCATION AERIAL



TACOMA | KIRKLAND | PORTLAND | SEATTLE

RELATIONSHIP FOCUSED.  
RESULTS DRIVEN.

**MICHAEL OLSON**

 253.533.1386

 molson@firstwesternproperties.com



First Western Properties—Tacoma Inc. | 253.472.0404  
6402 Tacoma Mall Blvd, Tacoma, WA 98409 | fwp-inc.com

© First Western Properties, Inc. DISCLAIMER: The above information has been secured from sources believed to be reliable, however, no representations are made to its accuracy. Prospective tenants or buyers should consult their professional advisors and conduct their own independent investigation. Properties are subject to change in price and/or availability without notice.