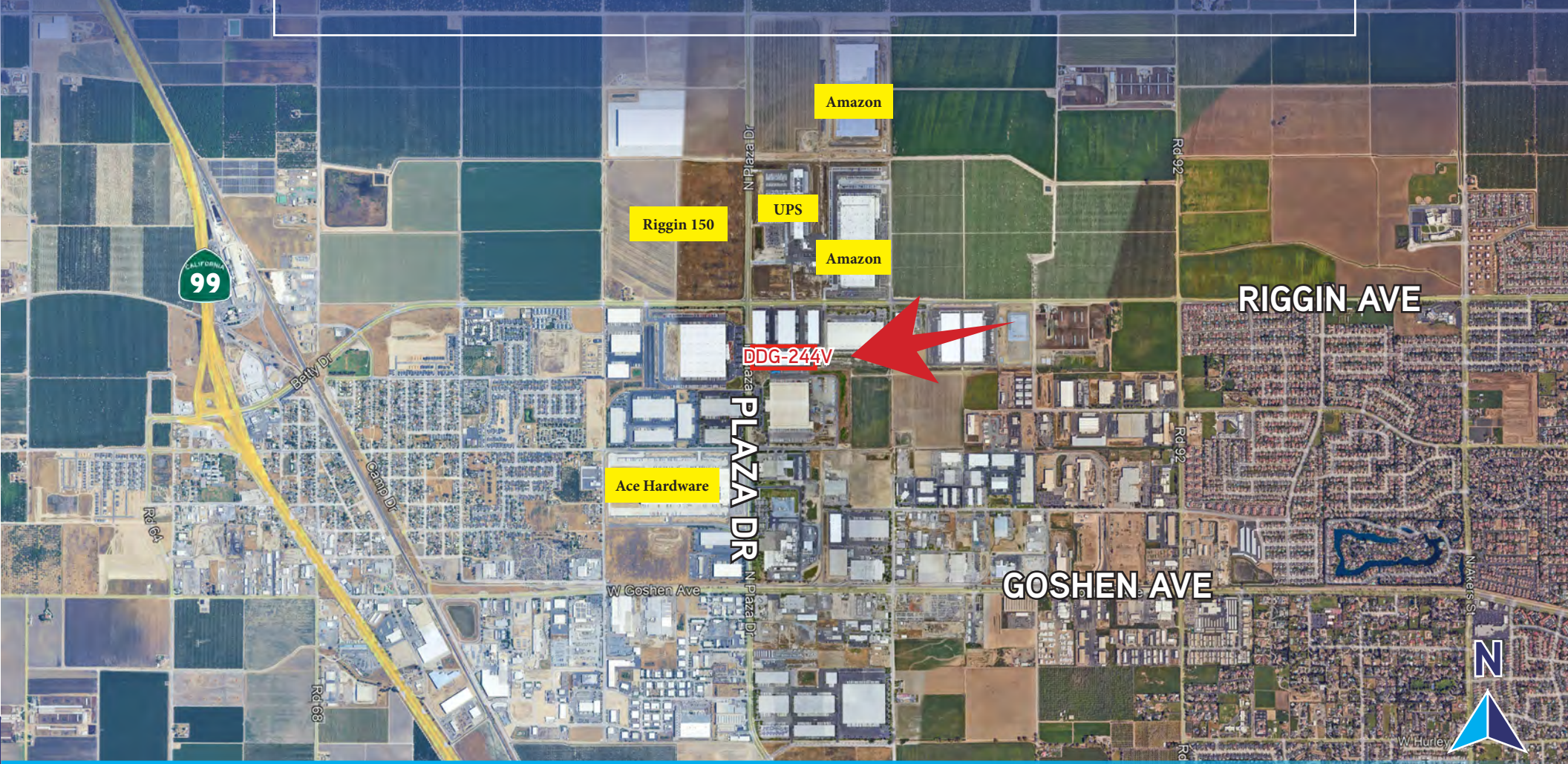


FOR LEASE • DDG-244V Building

2526 N. Plaza Drive, Visalia, CA 93291



Marcus Pignotti

(559) 225-6363
Extension 8

OFFICE:

7519 N. Ingram Avenue, Suite 104
Fresno, California 93711

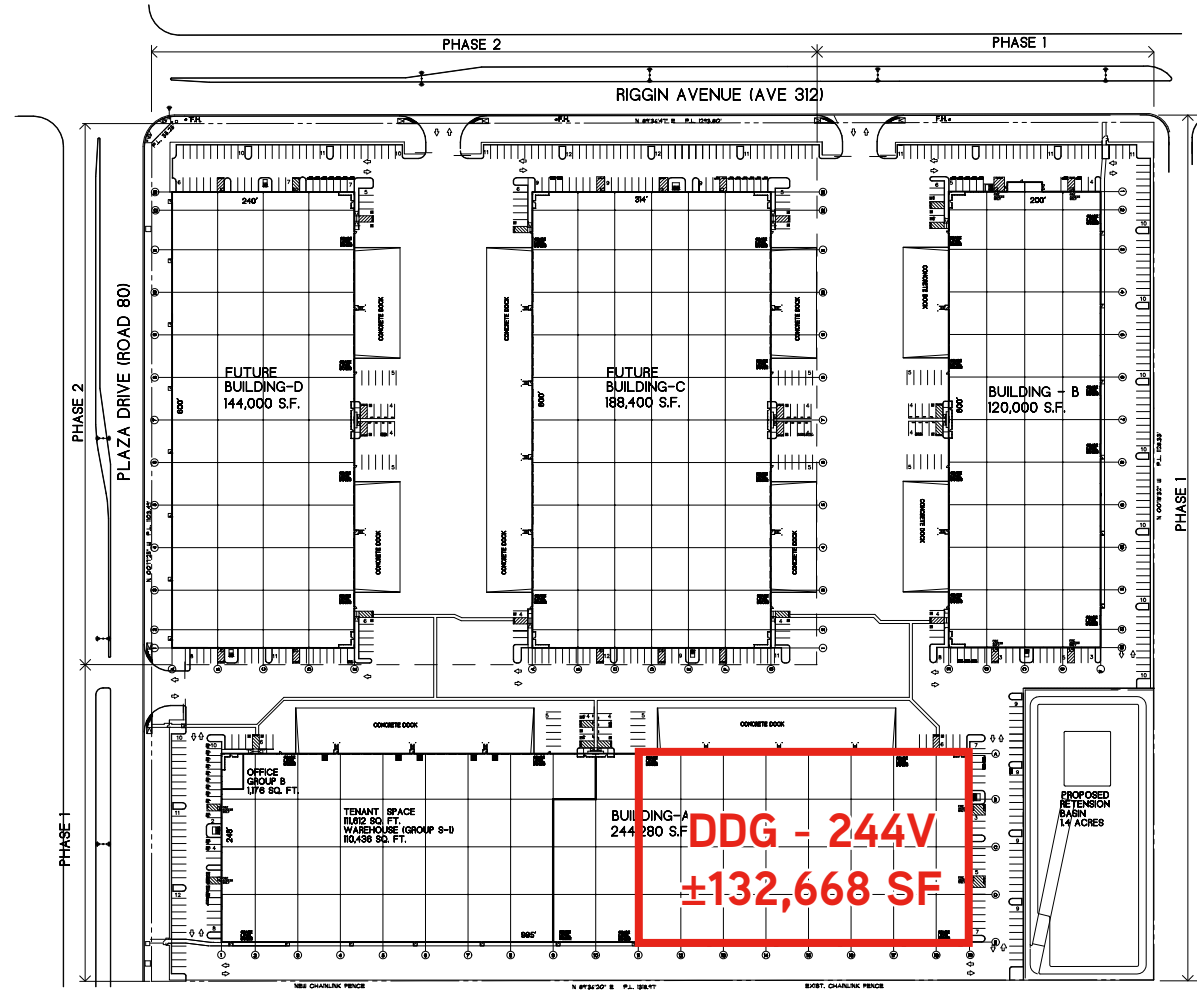
DDG 244V BUILDING

2526 N. Plaza Drive, Visalia CA



SITE PLAN

2526 N. Plaza Drive, Visalia CA



Marcus Pignotti

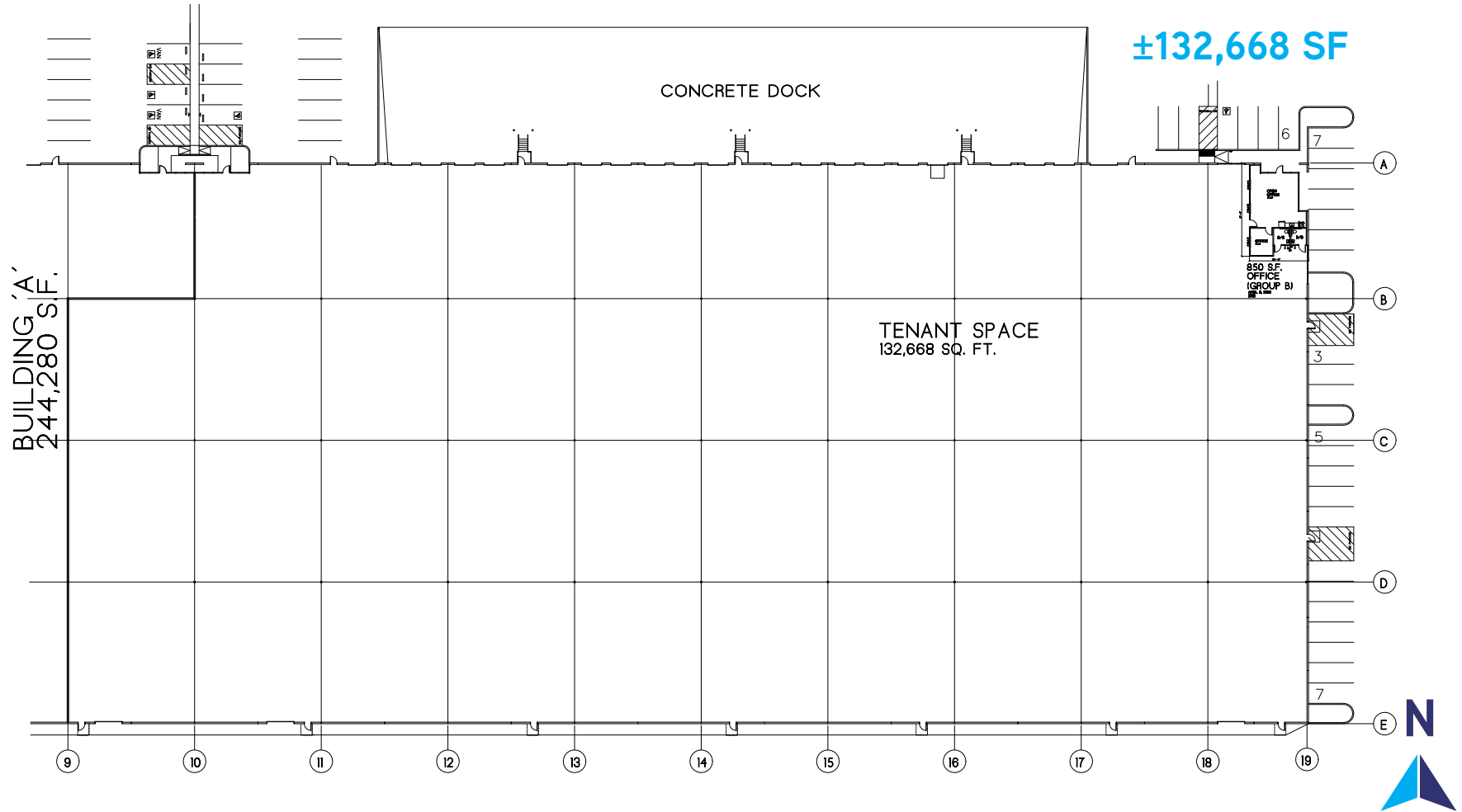
(559) 225-6363
Extension 8

OFFICE:

7519 N. Ingram Avenue, Suite 104
Fresno, California 93711

EXISTING FLOOR PLAN

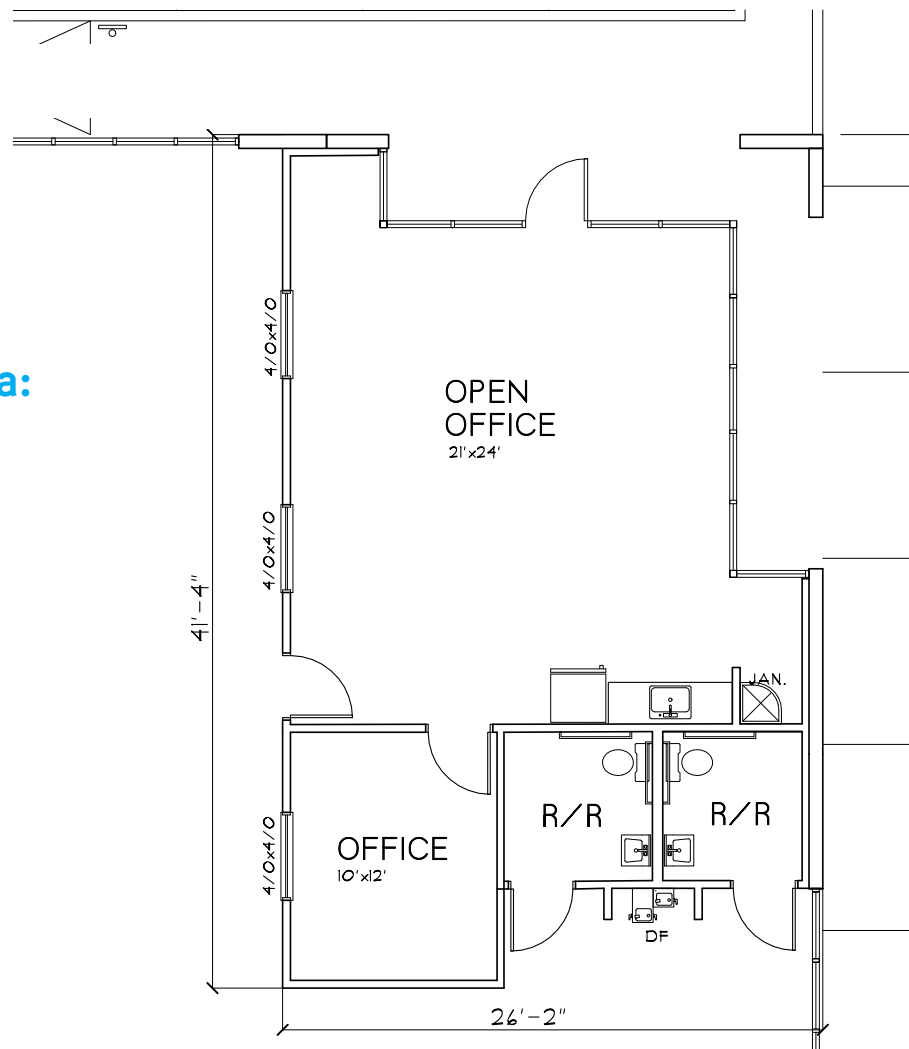
2526 N. Plaza Drive, Visalia CA



EXISTING OFFICE FLOOR PLAN

2526 N. Plaza Drive, Visalia CA

Office Area:
±850 SF



DDG - 244V BUILDING

Specifications

BUILDING SIZE:	±244,280 SF	DOCK CONSTRUCTION:	60' dock apron, reinforced 6" concrete, ±1% slope
AVAILABLE:	±132,668 SF	TRUCK DOORS:	Nineteen (19) 9' x 10' dock high doors and Five (5) 12' x 14' grade level door
BUILDING DIMENSIONS:	248' x 492.5'	FIRE SYSTEM:	K-17 ESFR System with booster pump
CONCRETE WALLS:	8"	OFFICE:	Approximately 850 SF
CONCRETE SLAB:	6" laser screed	ADDRESS:	2526 N. Plaza Drive Visalia, California 93291
CLEAR HEIGHT:	30' Minimum Clear Height		
ROOF CONSTRUCTION:	Panelized System		
ROOFING:	.60 TPO		
SKYLIGHTS:	4' x 8' -- 4 per bay		
DOCK AREA:	145' truck court		

DDG-244V Building

