

400 Centennial Pkwy
Unit 190
Louisville, CO

3,960 Square Feet

Office Space Available!

- Multiple offices and open work space
- Kitchenette in-suite
- Large lobby and reception area
- Ample natural light
- Outdoor patio with picnic tables
- Building and monument signage available
- Close to numerous retail and restaurants
- Beautiful finishes
- Easy access to US-36



TEBO
PROPERTIES

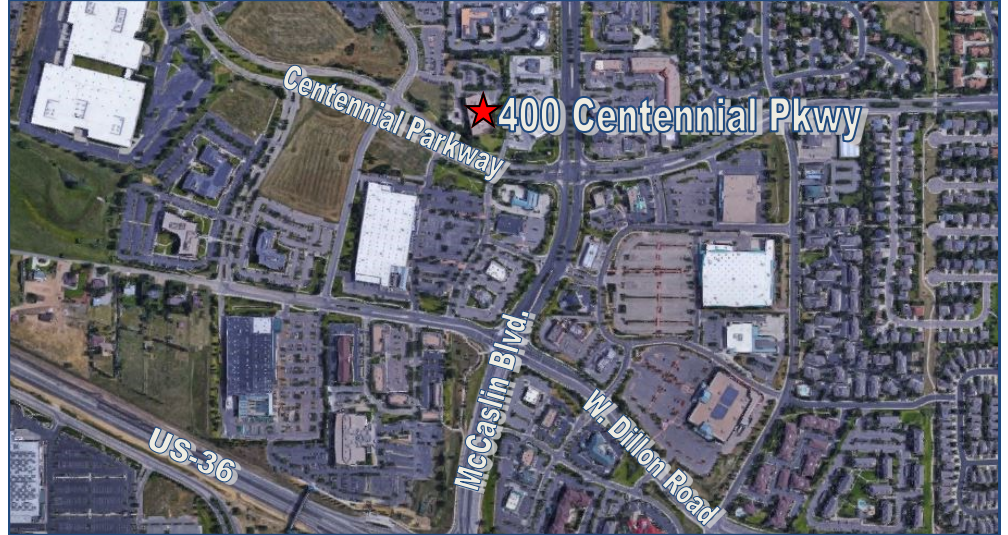
Contact us for more information:
leasing@teboproperties.com
303-447-8326
www.TEBOproperties.com

OFFICE SPACE FOR LEASE

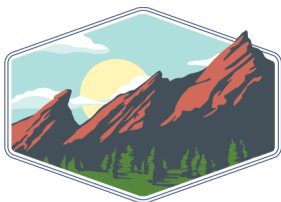
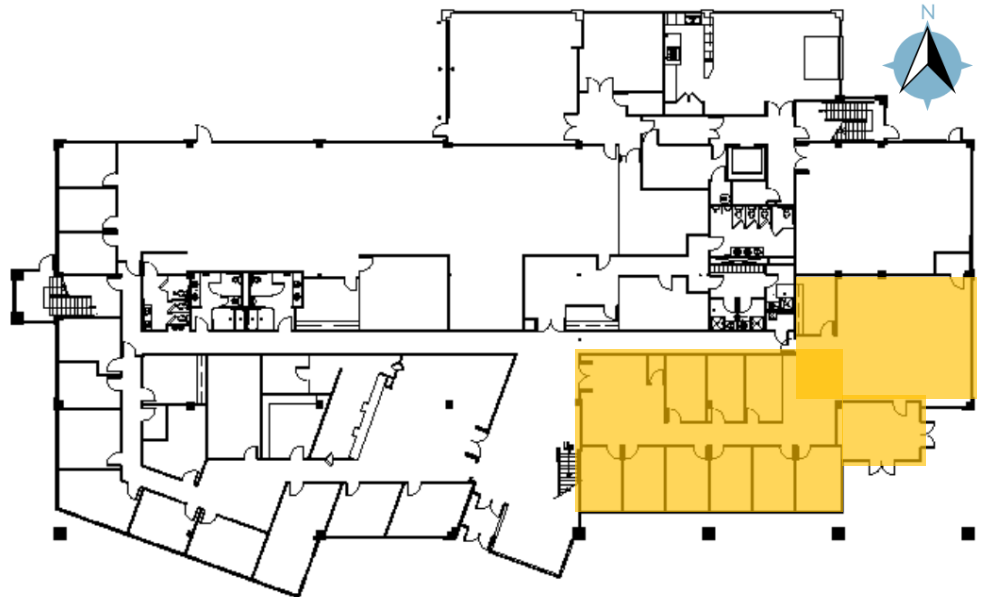


TEBO
PROPERTIES

400 Centennial Pkwy, Louisville, CO



Unit	Square Footage	Price NNN estimate as of 12/31/25
190	3,960	$\$19.50/\text{SF} + \$9.00(\text{NNN}) =$ $\$9,405.00$ per month



TEBO
PROPERTIES

Contact us for more information:
leasing@teboproperties.com
303-447-8326
www.TEBOproperties.com