

Office Space for Lease

SVEA HOUSE | PRIME WESTLAKE LOCATION

1749-1751 DEXTER AVE N, SEATTLE, WA 98109



Proudly Owned by Local Ownership: The Swedish Club

Building Highlights

Located in highly desirable location

Easy access to I-5, Highway 99 and Downtown Seattle

Close proximity to bus lines, bike lane and very walkable

Perfect for service-oriented business seeking high visibility

Private exterior entrance

Ample free surface parking available



FOR MORE INFO
CONTACT

BOJIDAR GABROVSKI
JACK DEANE
JACK FRANZ

bgabrovski@orioncp.com
jdeane@orioncp.com
jfranz@orioncp.com

847.275.8474
206.707.1315
925.482.7232

1218 Third Ave, Suite 2200
Seattle, WA 98101
www.orioncp.com

ORION
COMMERCIAL PARTNERS

Office Space for Lease

SVEA HOUSE | PRIME WESTLAKE LOCATION

1749-1751 DEXTER AVE N, SEATTLE, WA 98109



Space Highlights



SECOND FLOOR: 3,778 SF

Lease Rate: \$18.00/SF/YR + NNN

Large conference room

Offices with built-ins & an IT/server room

Spacious reception/waiting area

Breakroom & restrooms with shower

Scenic water views

The information contained herein was obtained from sources believed reliable; however, ORION Commercial Partners LLC makes no guarantees, warranties or representations as to the completeness or accuracy thereof. The presentation of this property is submitted subject to errors, omissions, change of price or conditions prior to sale or lease, or withdrawal without notice.

FOR MORE INFO
CONTACT

BOJIDAR GABROVSKI
JACK DEANE
JACK FRANZ

bgabrovski@orioncp.com
jdeane@orioncp.com
jfranz@orioncp.com

847.275.8474
206.707.1315
925.482.7232

1218 Third Ave, Suite 2200
Seattle, WA 98101
www.orioncp.com

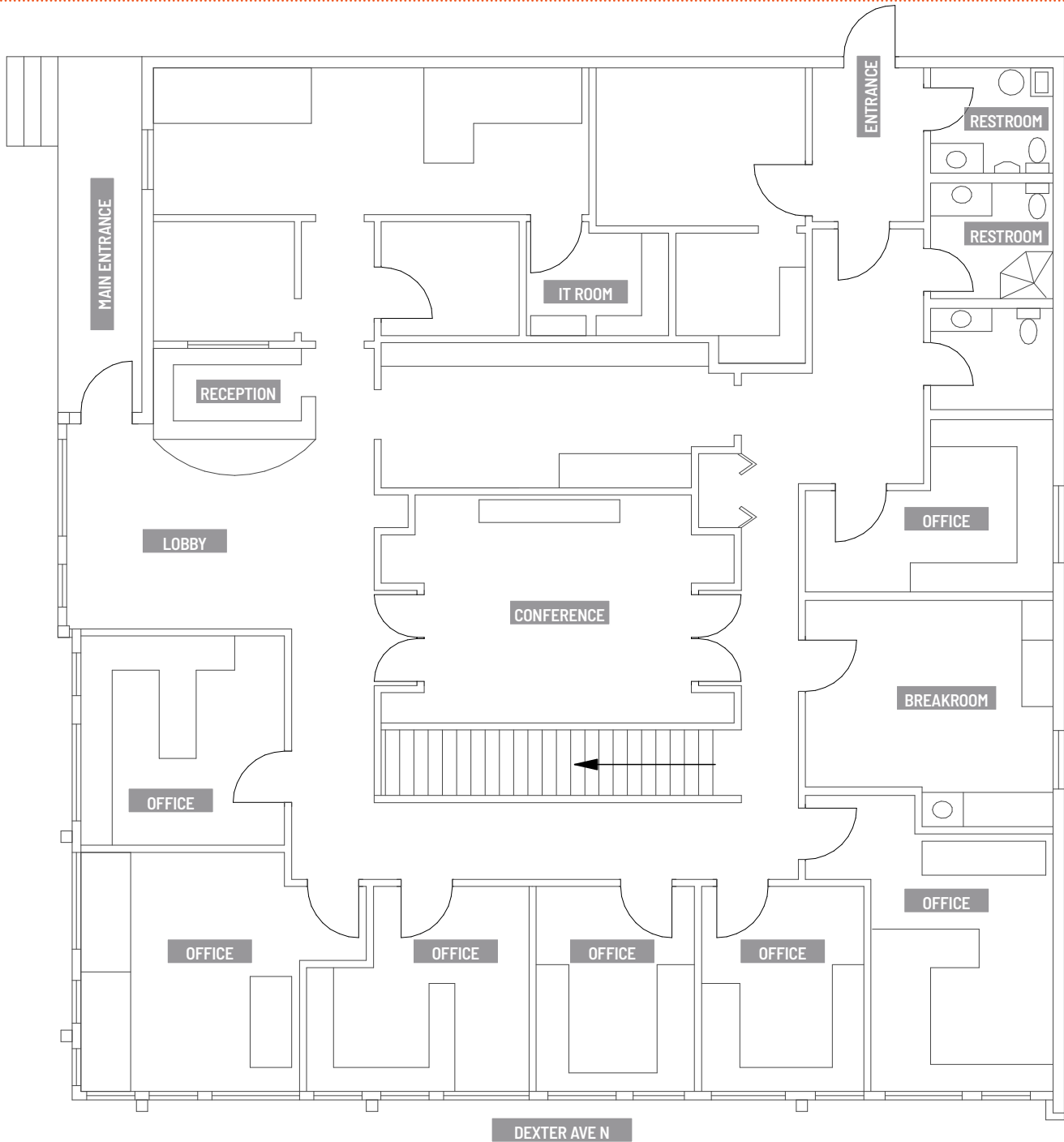
ORION
COMMERCIAL PARTNERS

Office Space for Lease

SVEA HOUSE | PRIME WESTLAKE LOCATION

1749-1751 DEXTER AVE N, SEATTLE, WA 98109

Second Floor | 3,778 SF



FOR MORE INFO
CONTACT

BOJIDAR GABROVSKI
JACK DEANE
JACK FRANZ

bgabrovski@orioncp.com
jdeane@orioncp.com
jfranz@orioncp.com

847.275.8474
206.707.1315
925.482.7232

1218 Third Ave, Suite 2200
Seattle, WA 98101
www.orioncp.com

ORION
COMMERCIAL PARTNERS

Office Space for Lease

SVEA HOUSE | PRIME WESTLAKE LOCATION

1749-1751 DEXTER AVE N, SEATTLE, WA 98109



About Westlake Area

Westlake is a cozy, upscale neighborhood along the west shore of Lake Union, offering a peaceful waterfront setting with floating homes, marina access, and scenic lake views. Its excellent walkability and strong transit connections make it unusually convenient for a waterfront area, giving it an urban feel without the congestion of downtown.

Because it sits just north of downtown and borders South Lake Union—Seattle’s major tech and biotech hub—Westlake is especially appealing to professionals and companies seeking a central, prestigious location with short commutes. It consistently ranks as one of Seattle’s most desirable waterfront neighborhoods, attracting people who want the benefits of lakeside living while staying close to the city’s core employment and cultural centers.



#2

Best Place to Live in King County



#7

Best Neighborhood for Young Professionals in Seattle

FOR MORE INFO
CONTACT

BOJIDAR GABROVSKI
JACK DEANE
JACK FRANZ

bgabrovski@orioncp.com
jdeane@orioncp.com
jfranz@orioncp.com

847.275.8474
206.707.1315
925.482.7232

1218 Third Ave, Suite 2200
Seattle, WA 98101
www.orioncp.com

ORION
COMMERCIAL PARTNERS