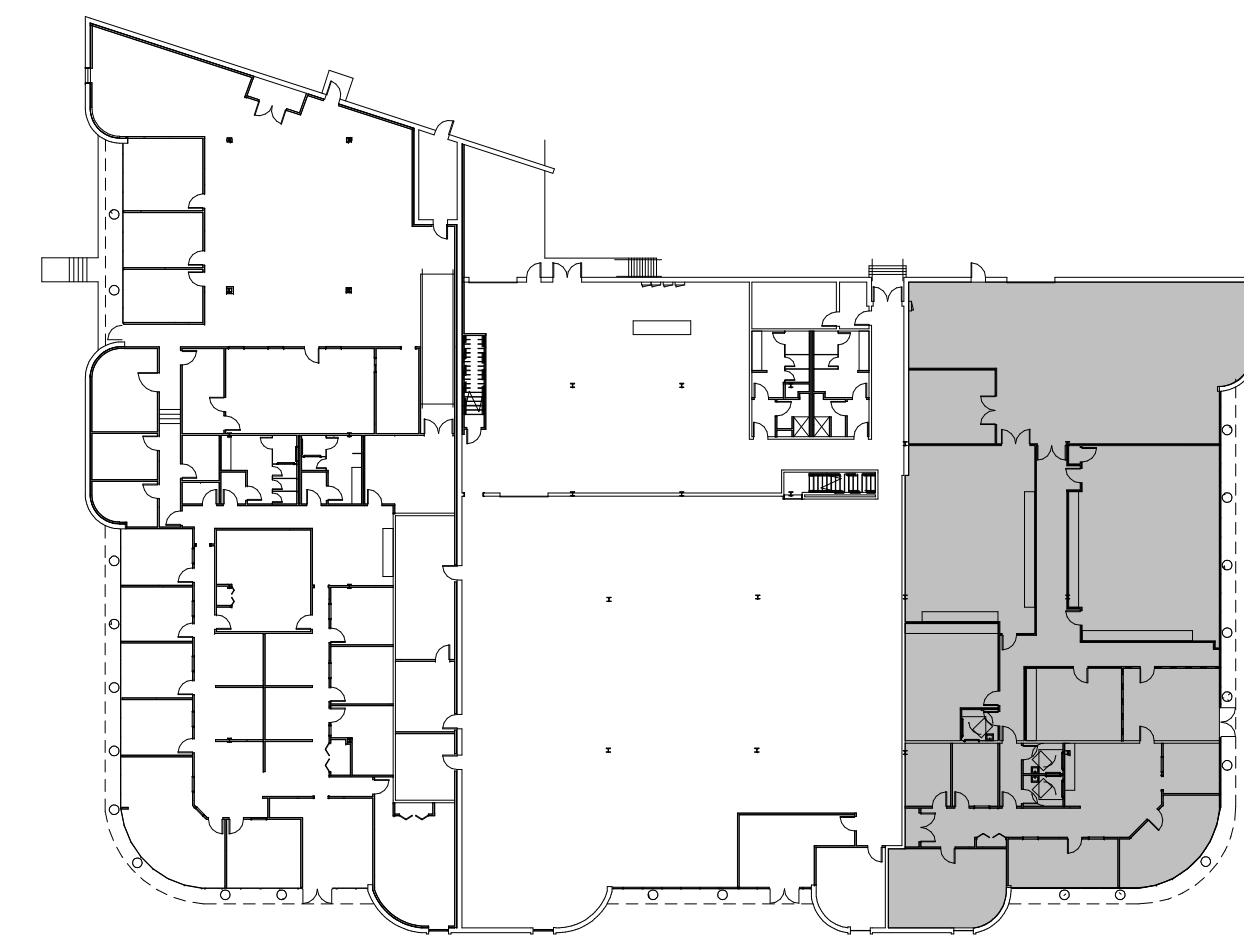


1 Preliminary Plan  
1/8" = 1'-0"

### LAB UTILITIES & FINISHES

LAB	REQUIREMENTS	QTY	REQUIREMENTS	QTY
FERMENTATION LAB	FLOOR DRAIN	1	NEGATIVE PRESSURE	
	HAND SINK W/ EYEWASH	1	CERAMIC TILE FLOOR AND BASE	
	COMPRESSED AIR LINE		F.R.P. TO 16'-0" A.F.F. AT NORTHWEST CORNER	
	NATURAL GAS		SEMI GLOSS PAINT	
	S.S. FREESTANDING BASIN SINK	1	DEIONIZED WATER	
	OPEN TO DECK		STEAM LINE	
	V.C.T. FLOORING	4		
MAIN LAB	HAND SINK W/ EYEWASH	2	NATURAL GAS	
	COMPRESSED AIR LINE		12'-0" CEILING WITH NON FRIABLE TILE	
	DEIONIZED WATER		SEMI GLOSS PAINT	
	HEAT WELDED SEAM FLOORING WITH FLASH COVE BASE		NEGATIVE PRESSURE	
INSTRUMENT LAB	HAND SINK W/ EYEWASH	1	12'-0" CEILING WITH NON FRIABLE TILE	
	COMPRESSED AIR LINE		HEAT WELDED SEAM FLOORING WITH FLASH COVE BASE	
	NATURAL GAS		SEMI GLOSS PAINT	
	NEGATIVE PRESSURE			
CHEM. STORAGE LAB	COMPRESSED AIR LINE		SEMI GLOSS PAINT	
	NATURAL GAS		HEAT WELDED SEAM FLOORING WITH FLASH COVE BASE	
	12'-0" CEILING WITH NON FRIABLE TILE		NEGATIVE PRESSURE	
	FUME HOOD		HAND SINK W/ EYEWASH	



2 Location Plan  
1" = 40'-0"

REVISION SCHEDULE	
NUMBER	DATE

PROJECT:  
**Yellow Box Life Sciences**  
5700 Highlands Parkway  
Suite 100  
Smyrna, GA 30082

CLIENT:  
**Eimo Enterprises, LLC.**  
Preliminary Plan

STAMP:  
STAMP DATE:

PROJECT NUMBER: 088/04/21  
DATE: 10 Dec 2021  
SHEET NUMBER: P-1.01

SCALE: As indicated  
DRAWN BY: GMT  
REVIEW AND APPROVE:  NOT RELEASED FOR CONSTRUCTION  RELEASED FOR CONSTRUCTION