

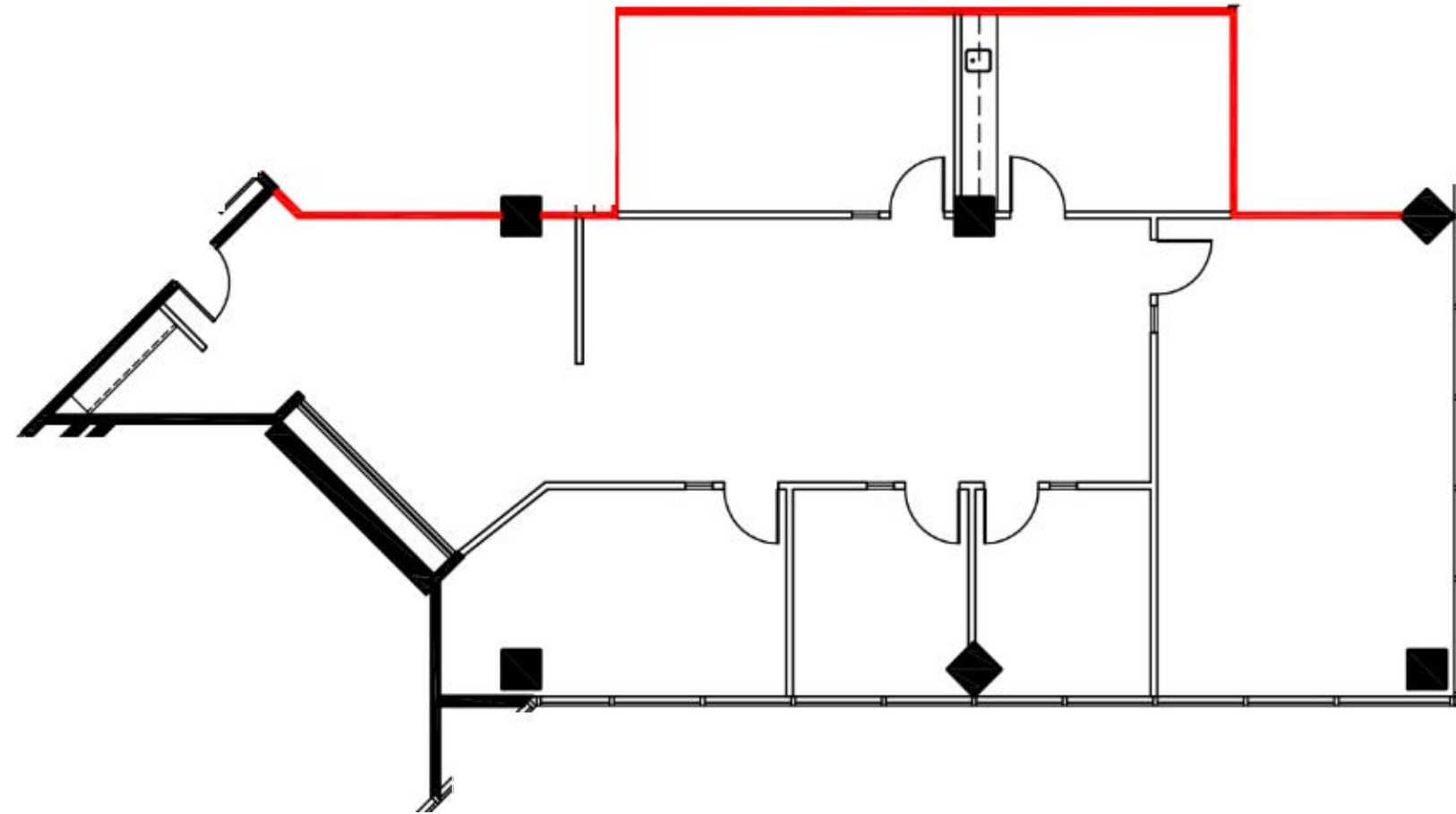
5090 Explorer Drive

# Suite 201

2,394 sq. ft.

- ◇ Turnkey office suite
- ◇ Mix of open area, 3 private offices, meeting rooms, boardroom, reception and eat-in kitchen

Available January 1, 2026



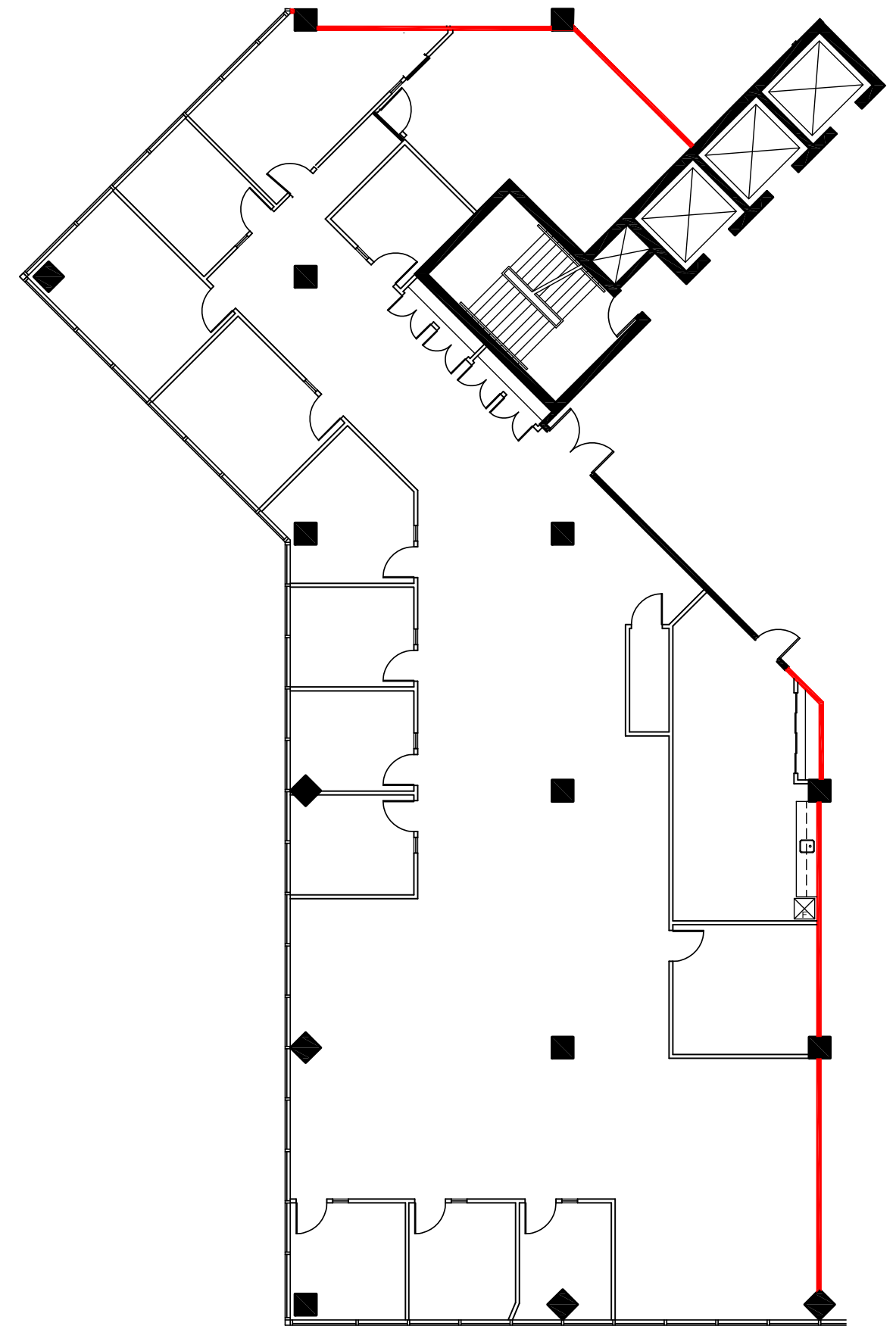
5090 Explorer Drive

# Suite 203

6,625 sq. ft.

- ◇ Built-out suite right off the elevator lobby
- ◇ Mix of open area, private offices, meeting rooms, boardroom, and eat-in kitchen

Available Immediately



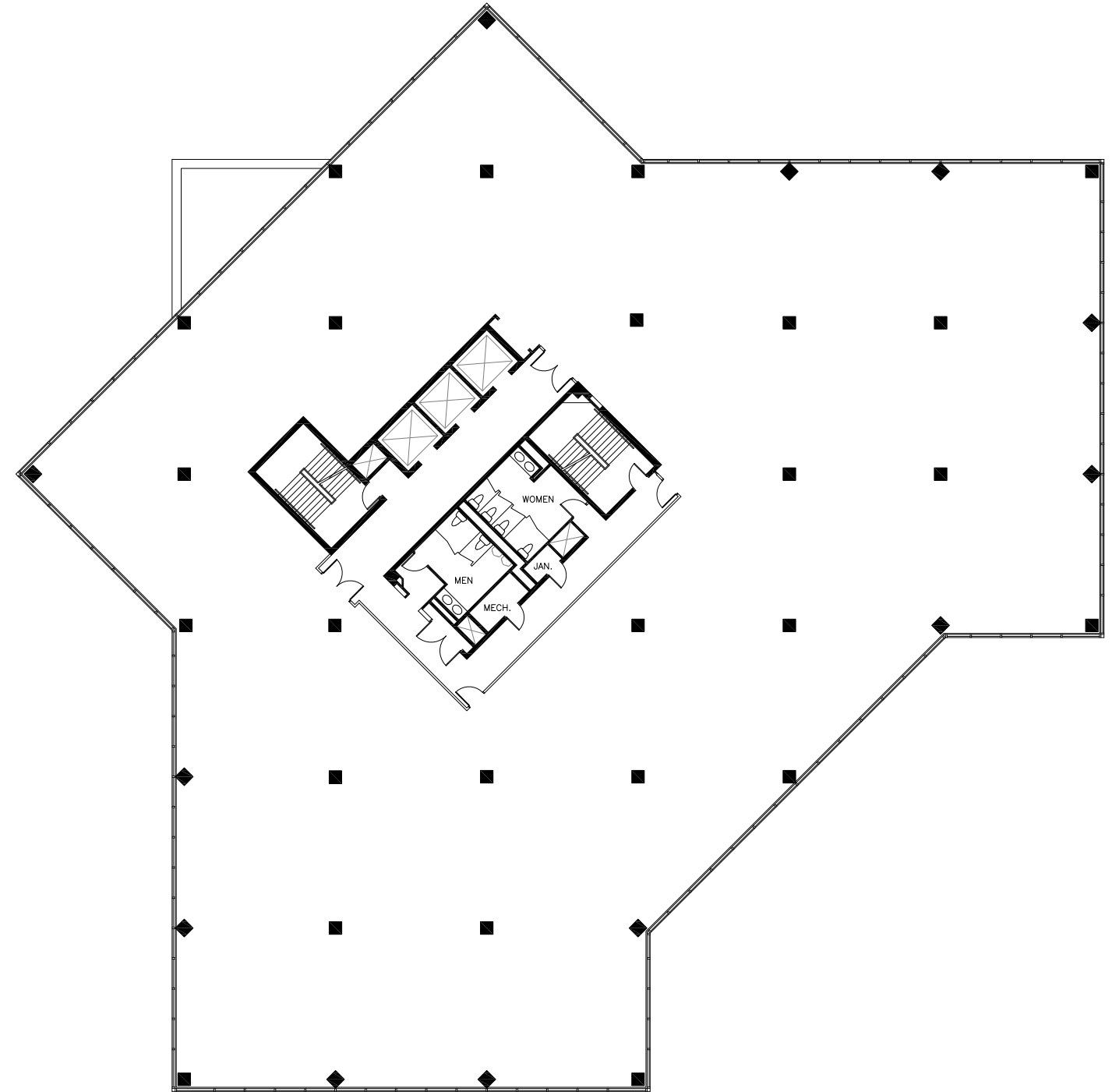
5090 Explorer Drive

# Suite 300

19,857 sq. ft.

- ◇ Full floor opportunity
- ◇ Floor currently under construction
- ◇ Bringing back to open concept, base building condition with new ceiling grid throughout

Available Immediately



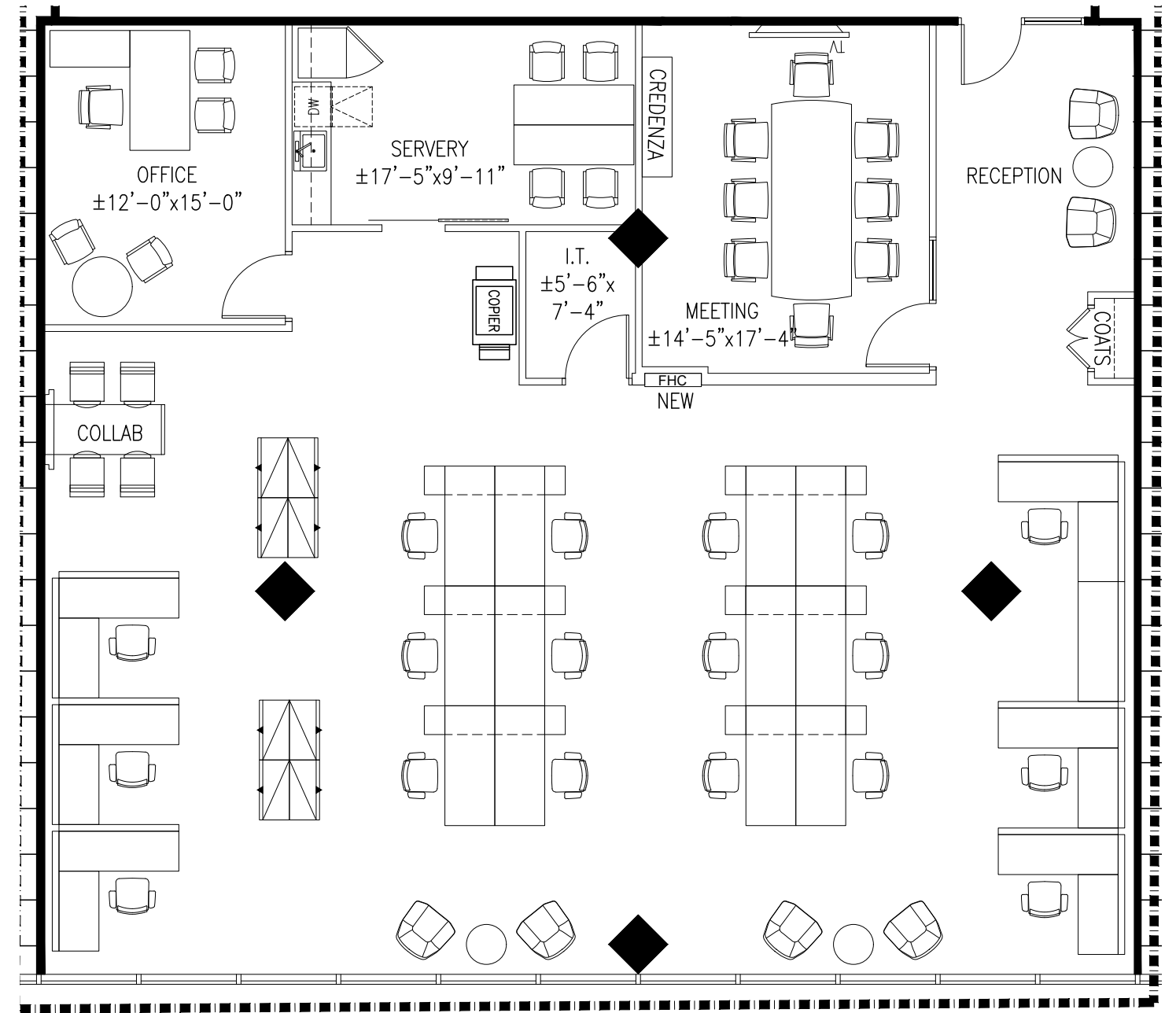
5090 Explorer Drive

# Suite 401

2,957 sq. ft.

- ◆ Newly built-out suite with reception, glass boardroom, ample open area for workstations, private office and kitchenette

Available September 1, 2026



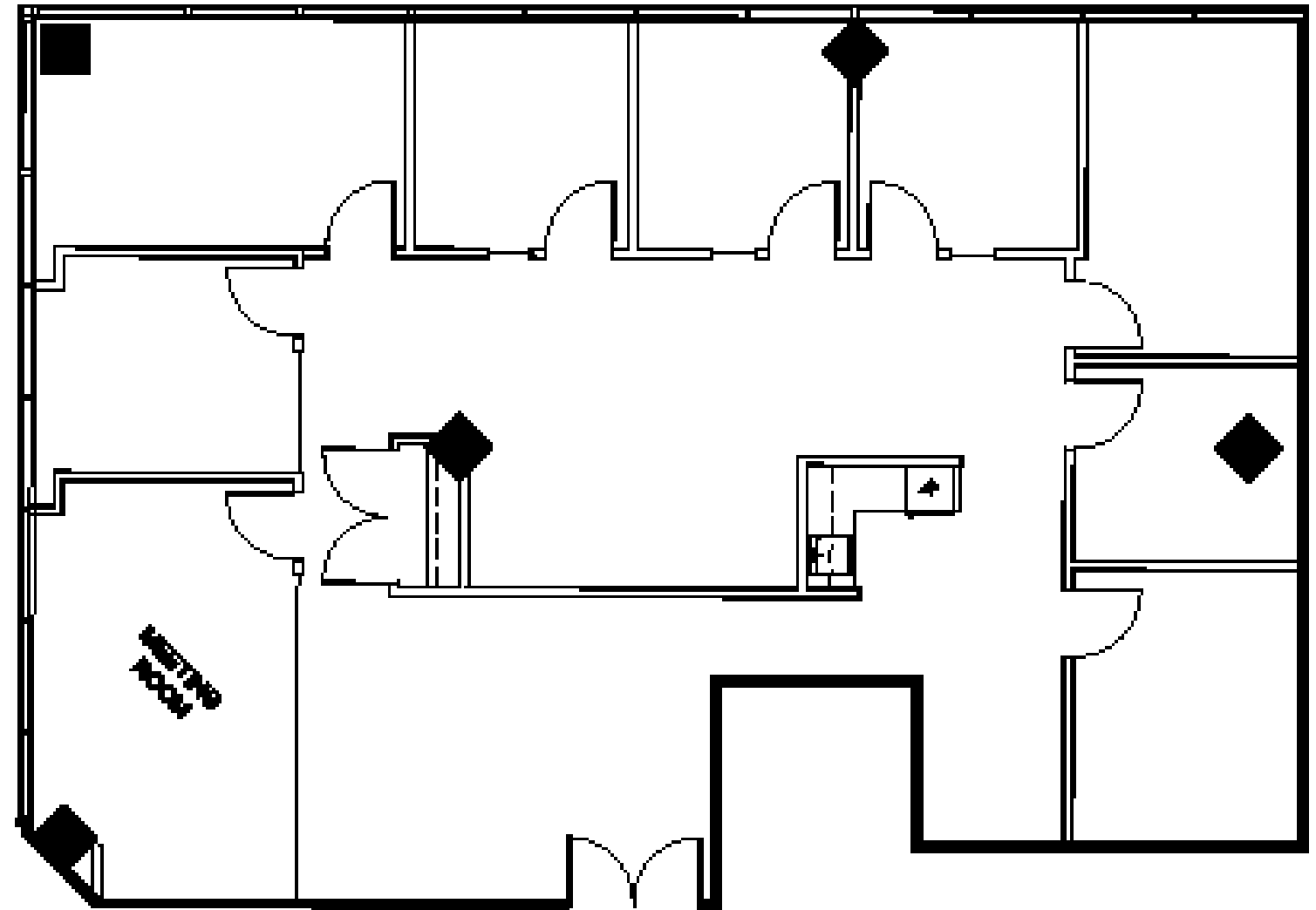
5090 Explorer Drive

# Suite 501

2,404 sq. ft.

- ◇ Private offices
- ◇ Meeting Rooms
- ◇ Kitchenette
- ◇ Open space

Available Immediately



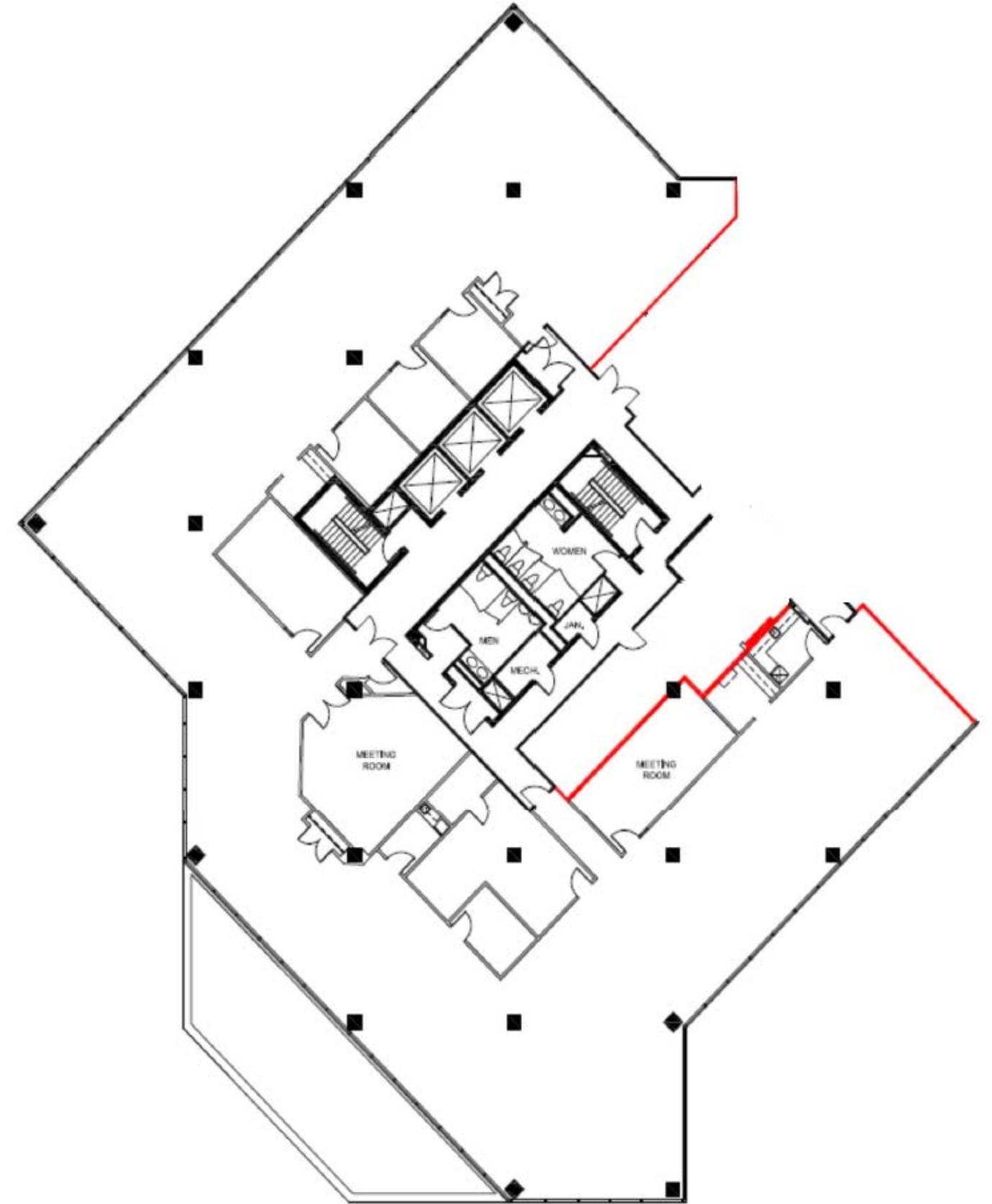
5090 Explorer Drive

# Suite 610

12,123 sq. ft.

- ◇ The suite is a mix of open area and enclosed private offices, meeting rooms and boardroom with a kitchenette in place.

Available April 1, 2026



5090 Explorer Drive

# Suite 801

4,570 sq. ft.

- ◇ Built-out suite
- ◇ Mix of private offices, meeting rooms, kitchenette, and open space

Available Q3 2025

