

# REGENCY CENTER | FOR LEASE

*8 Building Park with ±46,007 SF Available*



**JORDAN CAMP**  
404.969.9487  
[jordan.camp@oakleyrep.com](mailto:jordan.camp@oakleyrep.com)

**REID HANNER**  
404.281.7068  
[reid.hanner@oakleyrep.com](mailto:reid.hanner@oakleyrep.com)

**JOHN STELLING**  
404.259.6430  
[john.stelling@oakleyrep.com](mailto:john.stelling@oakleyrep.com)

**oakley**  
REAL ESTATE PARTNERS

# REGENCY CENTER OVERVIEW

Strategically located in Norcross, Regency Center is a prime industrial park that offers unparalleled access to major transportation arteries. Just 1.4 miles from Interstate-85 and 3.8 miles from Atlanta's Perimeter, the park provides a competitive edge for a wide range of users.

Situated mere feet from Jimmy Carter Boulevard, a major industrial corridor in the Southeast, and only 1.6 miles from Peachtree Industrial Boulevard, Regency Center is ideally positioned for efficient last-mile delivery and operational logistics within the greater Atlanta market.

As a suburban infill location, Regency Center is surrounded by a dense population and a robust business community, with more than 3,090 businesses and 47,400 workers nearby. The park is also located within a Qualified Opportunity Zone and the Gateway85 Community Improvement District (CID), which includes over \$1 billion in commercial property value.

## ADDRESS

6300 | 6290 Jimmy Carter Boulevard  
6190 | 6230 | 6350 | 6375 | 6325 | 6215 Regency Parkway  
Norcross, GA 30071

## PARK SQUARE FOOTAGE

±264,339 SF  
Across 8 Buildings

## AVAILABLE SQUARE FOOTAGE

±46,007 SF  
Across 5 Buildings



# PARK AVAILABILITES

## Regency Center



**BUILDING 1**  
NONE AVAILABLE

**BUILDING 2**  
SUITE 200      ±7,932 SF      1 DH

**BUILDING 3**  
SUITE 300      ±12,029 SF      1 DH  
1 DI

**BUILDING 4**  
SUITE 400      ±18,598 SF      3 DH  
1 DI

**BUILDING 5**  
SUITE 500      ±4,992 SF      1 DH  
1 DI

**BUILDING 7**  
NONE AVAILABLE

**BUILDING 8**  
NONE AVAILABLE

**BUILDING 9**  
SUITE 975      ±2,456 SF      1 DH

# PARK PHOTOS

## Regency Center

6300 JIMMY CARTER | BLDG. 1



6290 JIMMY CARTER | BLDG. 2



6190 REGENCY PARKWAY | BLDG. 3



6230 REGENCY PARKWAY | BLDG. 4



6350 REGENCY PARKWAY | BLDG. 5



6375 REGENCY PARKWAY | BLDG. 7



6325 REGENCY PARKWAY | BLDG. 8

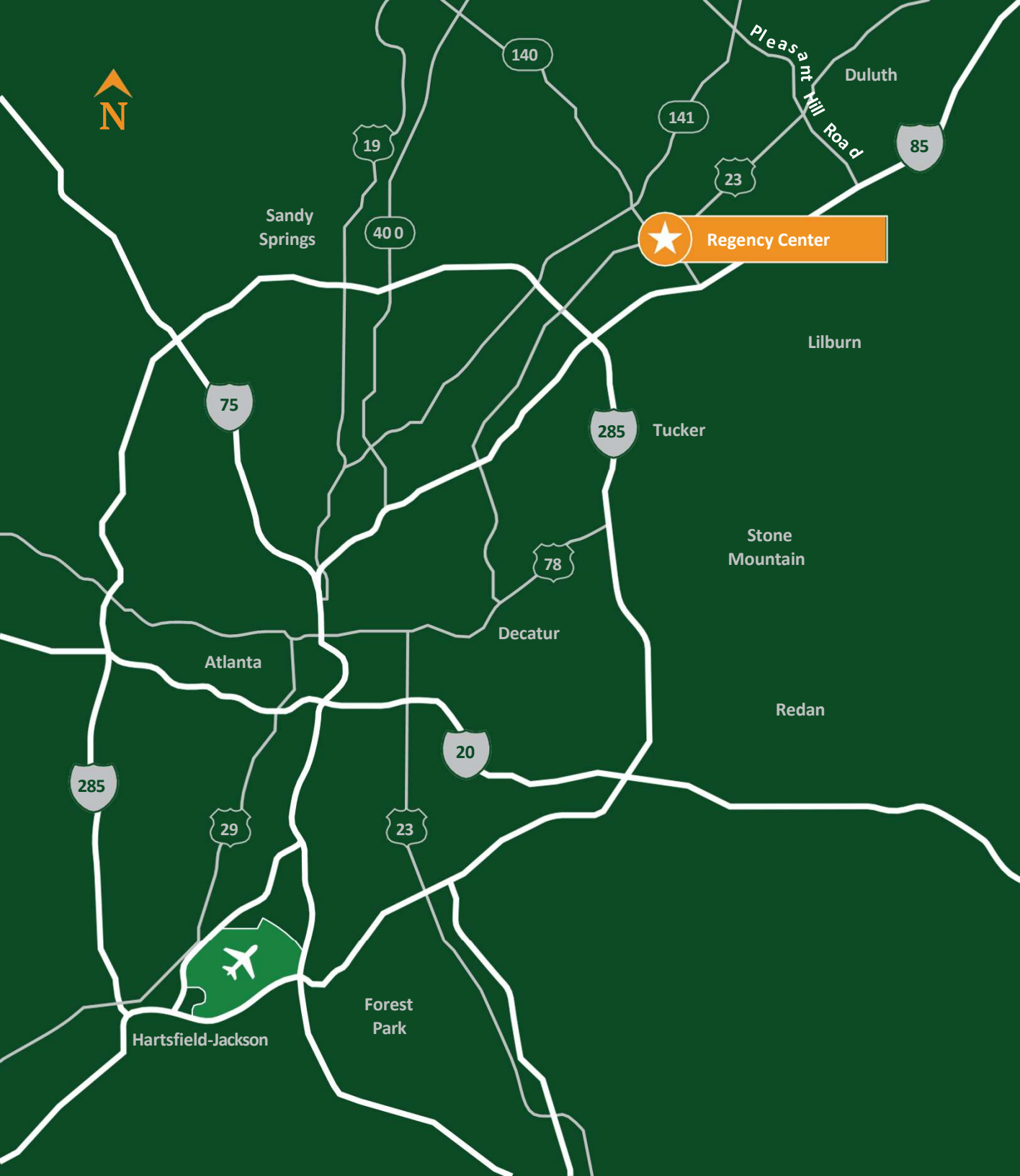


6215 REGENCY PARKWAY | BLDG. 9



# PARK LOGISTICS

*Regency Center*



SOUTHEAST REGIONAL ACCESS	
LOCATION	DISTANCE
Interstate 85	1.4 Miles
Interstate 285	3.8 Miles
Hartsfield-Jackson	27 Miles
Greenville, SC	129 Miles
Birmingham, AL	166 Miles
Charlotte, NC	230 Miles
Savannah, GA	263 Miles
Charleston, SC	305 Miles

# PARK ACCESS

*Regency Center*

PEA CHTREE INDUSTRIAL BOULEVARD

BUFORD HIGHWAY

JIMMY CARTER BOULEVARD

SITE



# 6350 REGENCY PARKWAY

*Regency Center | Building 5*



**1984**

**YEAR BUILT**

**±27,332 SF**

**TOTAL BUILDING SIZE**

**9 DH | 1 DI**

**DOORS**

**18'**

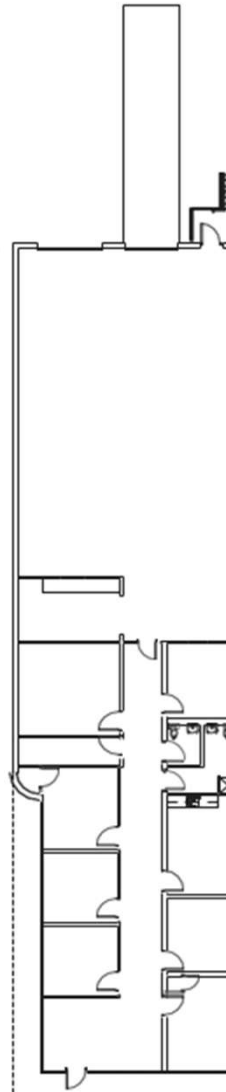
**CLEAR HEIGHT**

# 6350 REGENCY PARKWAY

*Regency Center | Building 5 – Suite 500*

## SPACE FEATURES:

- Building Size: 27,332 SF
- Available Size: 4,992 SF
- Office: 2,625 SF
- Clear Height: 18'
- Dock High Door: 1
- Drive-In Door: 1
- Rear Load



**JORDAN CAMP**

404.969.9487

[jordan.camp@oakleyrep.com](mailto:jordan.camp@oakleyrep.com)

**REID HANNER**

404.281.7068

[reid.hanner@oakleyrep.com](mailto:reid.hanner@oakleyrep.com)

**JOHN STELLING**

404.259.6430

[john.stelling@oakleyrep.com](mailto:john.stelling@oakleyrep.com)

 **oakley**  
REAL ESTATE PARTNERS

# REGENCY CENTER | FOR LEASE

*8 Building Park with ±46,007 SF Available*

*Norcross, GA 30071*

**JORDAN CAMP**

404.969.9487

[jordan.camp@oakleyrep.com](mailto:jordan.camp@oakleyrep.com)

**REID HANNER**

404.281.7068

[reid.hanner@oakleyrep.com](mailto:reid.hanner@oakleyrep.com)

**JOHN STELLING**

404.259.6430

[john.stelling@oakleyrep.com](mailto:john.stelling@oakleyrep.com)

 **oakley**  
REAL ESTATE PARTNERS