



**PREMIER**  
COMMERCIAL  
PROPERTIES

# FOR LEASE



## Coworking Office For Lease

919 Lilac Dr. N  
Golden Valley, MN 55422

### AVAILABLE SPACE

- Single Offices up to 422 square feet available
- Fantastic Coworking space setup close to the cities
- Onsite management
- 24/7 access with key fobs
- Great common area amenities such as conference rooms, quiet areas, ample parking coffee and kitchen
- Lots of natural light
- Easy access to hwy 100 and hwy 55
- Flexible lease terms
- Space is ideal for the modern remote worker with lockable secure rooms



### PROPERTY DETAILS

Lease rates include internet and all utilities

### FOR MORE INFORMATION, CONTACT

**Mike Fisher**

763-486-8247

[mikefisher@premiercommercialproperties.com](mailto:mikefisher@premiercommercialproperties.com)



**PREMIER**  
COMMERCIAL  
PROPERTIES

# FOR LEASE

**CONTACT:** Mike Fisher

**MOBILE:** 763-486-8247

**EMAIL:** [mikefisher@premiercommercialproperties.com](mailto:mikefisher@premiercommercialproperties.com)





**PREMIER**  
COMMERCIAL  
PROPERTIES

# FOR LEASE

**CONTACT:** Mike Fisher

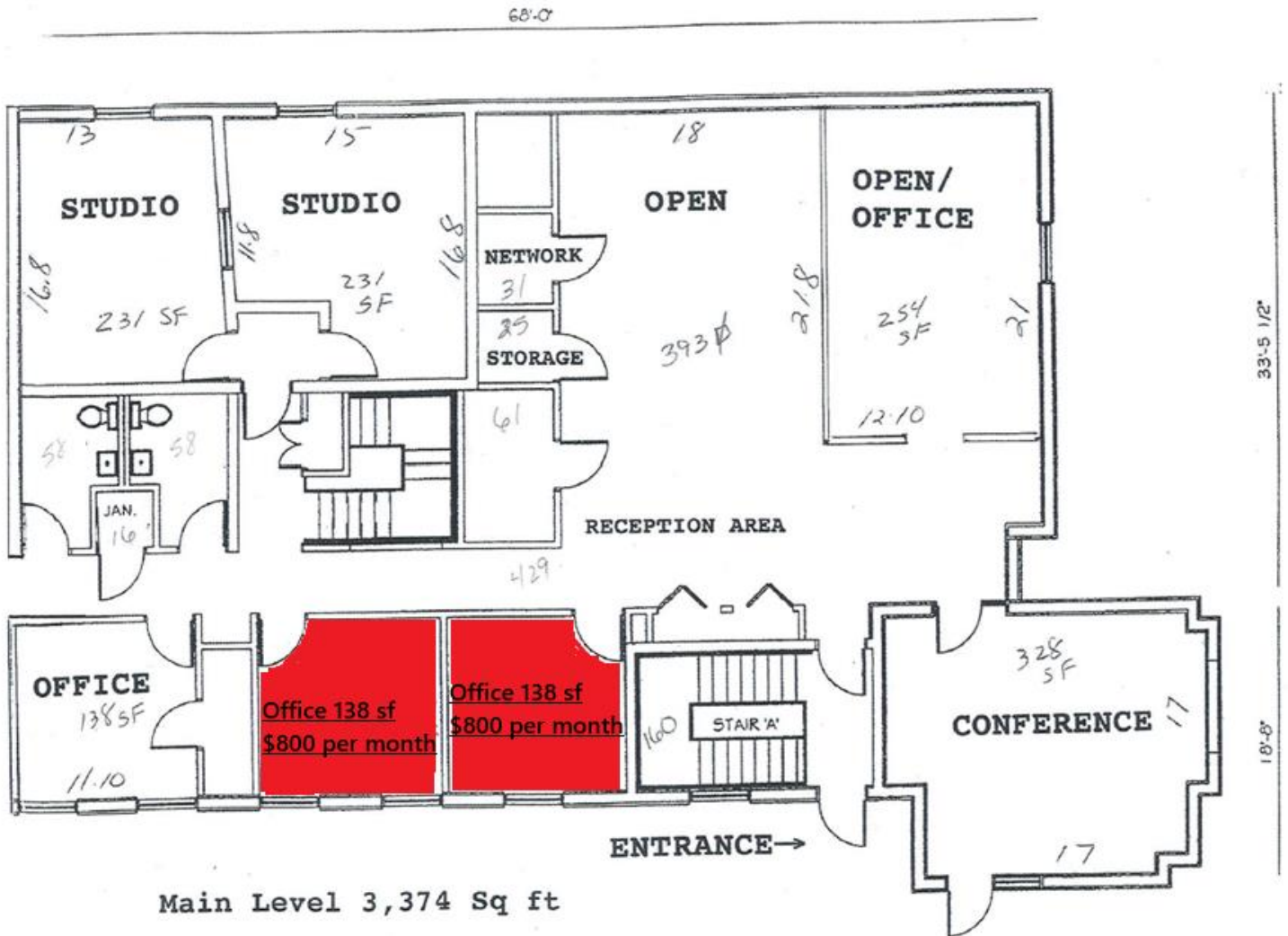
**MOBILE:** 763-486-8247

**EMAIL:** [mikefisher@premiercommercialproperties.com](mailto:mikefisher@premiercommercialproperties.com)



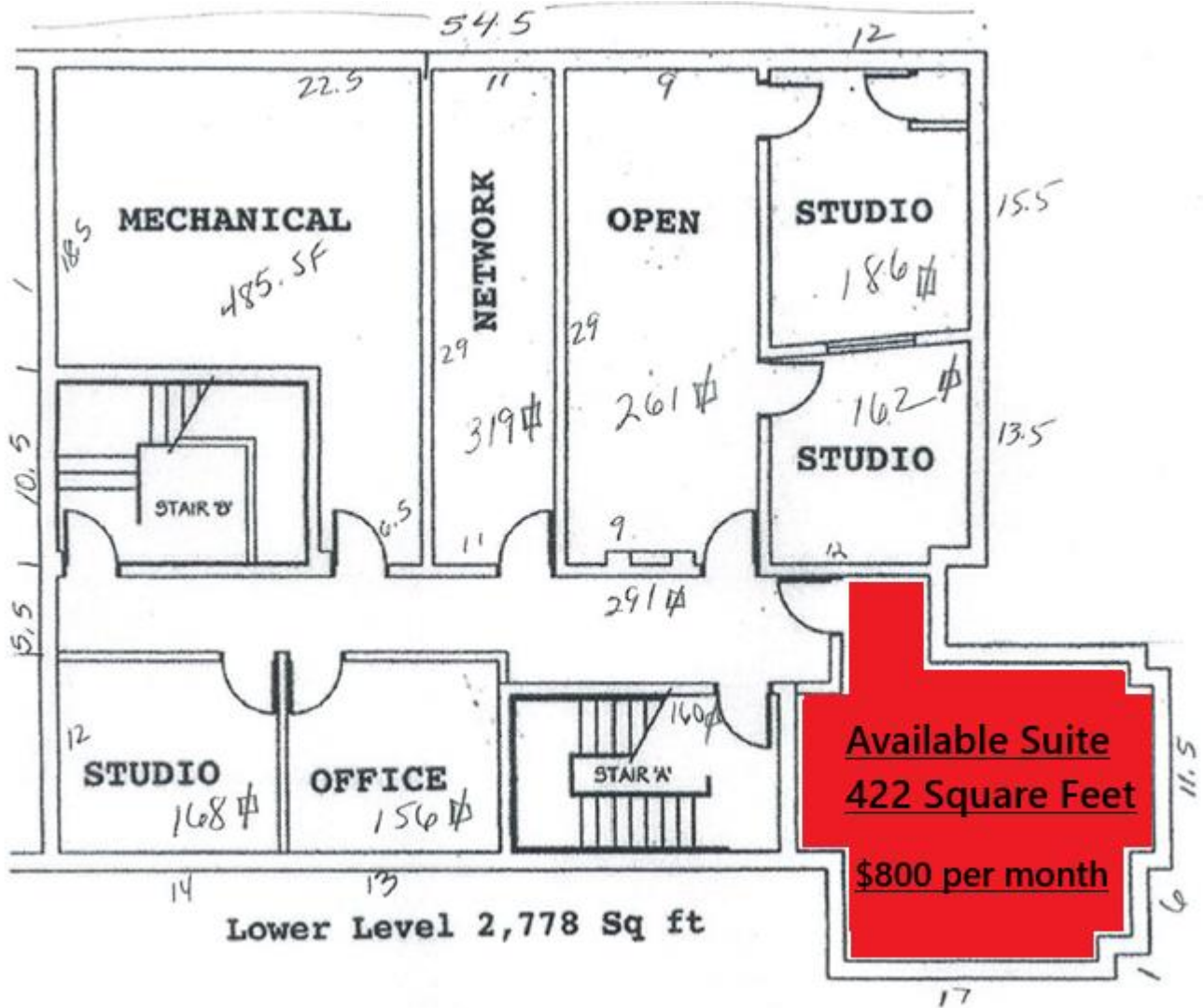


## Upper-level suites available and floor plan below





## Lower-level suite available and floor plan below





**PREMIER**  
COMMERCIAL  
PROPERTIES

**FOR LEASE**

**CONTACT:** Mike Fisher

**MOBILE:** 763-486-8247

**EMAIL:** [mikefisher@premiercommercialproperties.com](mailto:mikefisher@premiercommercialproperties.com)

**For video tour scan QR code below**





**CONTACT:** Mike Fisher

**MOBILE:** 763-486-8247

**EMAIL:** [mikefisher@premiercommercialproperties.com](mailto:mikefisher@premiercommercialproperties.com)



### Demographics

	<b>2 miles</b>	<b>5 miles</b>	<b>10 miles</b>
2020 Population	34,232	382,546	1,178,063
2025 Population	33,651	380,041	1,165,421
Median Age	40.6	37.4	38
Avg Household Income	\$128,513	\$109,468	\$118,295
Median Household Income	\$99,264	\$83,373	\$90,092
White	23,857	235,026	743,542
Black	4,491	73,066	180,611
American Indian/Alaskan Native	139	3,030	8,391
Asian	1,495	20,079	83,212
Hawaiian & Pacific Islander	6	117	364
Two or More Races	3,662	48,723	149,301
Hispanic Origin	1,771	31,439	98,788