



±45 ACRES

LAND AVAILABLE FOR SALE

SWQ I-45 & Old Montgomery Rd | Willis, TX



WWW.BLUEOXGROUP.COM

PROPERTY INFORMATION:

Address: SWQ I-45 & Old Montgomery Rd
Willis, TX 77318

Size: ±45 AC

Price:

- **±35 AC Tract:** \$2.50 PSF
- **Commercial Reserve 1:** \$12.00 PSF
- **Commercial Reserve 2:** \$12.00 PSF
- **Commercial Reserve 3:** \$8.00 PSF

HIGHLIGHTS:

- Located in the southwest quadrant of Interstate 45 & Old Montgomery Rd
- On site detention and utilities provided
- Special use permit for an RV park
- Across from The Woodland Hills master planned community with ±4,500 homes planned at completion
- Close proximity to Lake Conroe, a major attraction for the Houston MSA
- Surrounded by several major retailers including Kroger Marketplace, H-E-B, Tractor Supply Co, Spec's, Walgreens, CVS and more

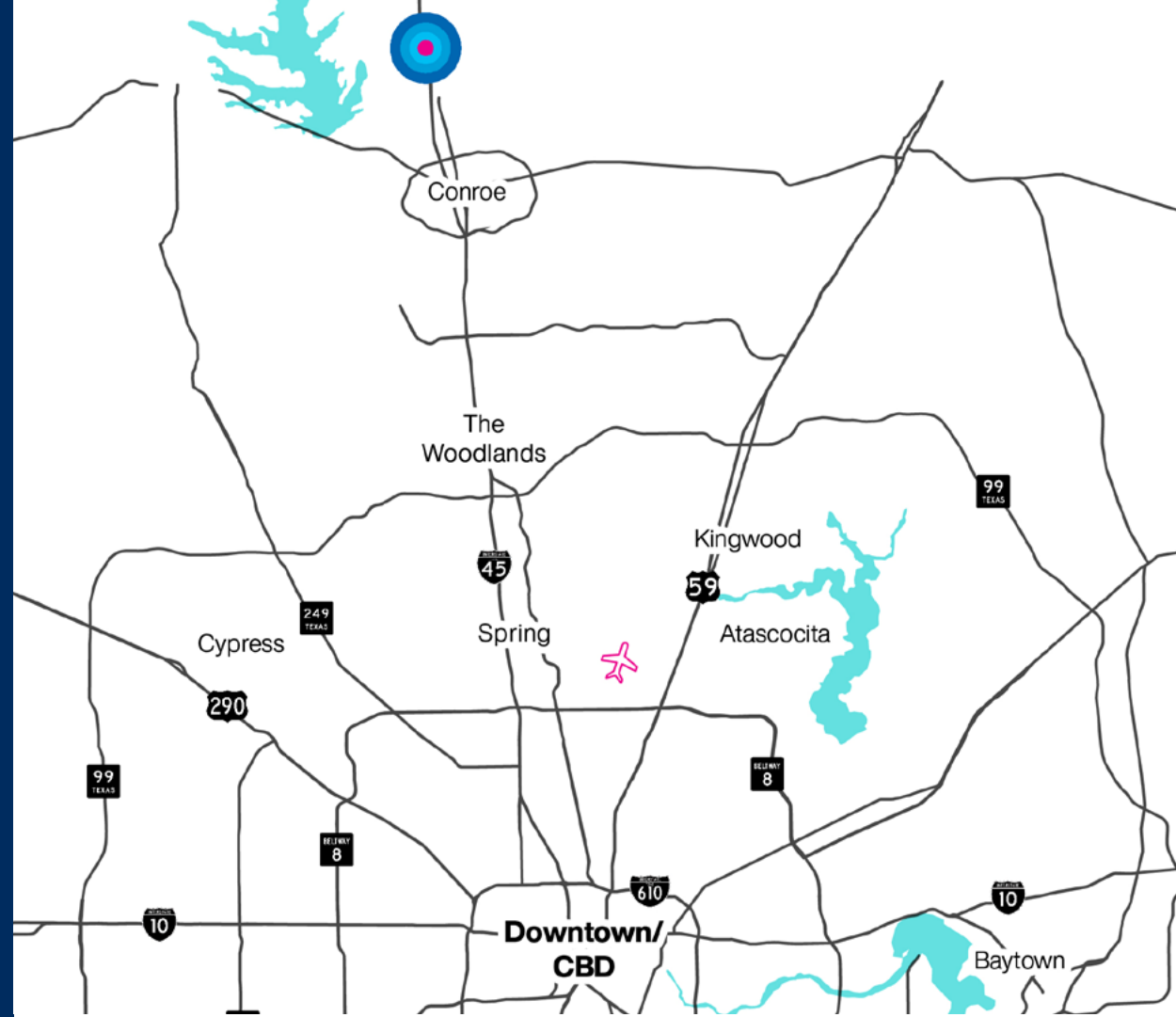
TRAFFIC COUNTS:

Interstate 45: 130,239 CPD '24

FM 1097: 22,020 CPD '24

2025 DEMOGRAPHICS:

	1 Mile	3 Miles	5 Miles
Population	2,432	22,866	57,483
Daytime Pop.	1,004	10,588	23,748
Avg HH Income	\$91,015	\$105,562	\$117,712



School District:	Willis ISD	
Utilities:	City of Willis	
Tax Rates:	City of Willis	0.5683
	Emergency Service District #1	0.1
	Montgomery County	0.4083
	Montgomery County Hospital	0.0567
	Lone Star College	0.1078
	Willis ISD	1.172
	TOTAL TAX RATE	2.4131



SITE

SITE

1097

KID'S WORLD
A WORLD OF LEARNING



1097

22,020 CPD '24

SPEC'S
WINES • SPIRITS • FINER FOODS



West Side LP

±35 AC
LAND AVAILABLE

On Site Detention
& Utilities Provided

↕↕
Cross Access
with Adjacent Property

COMMERCIAL
RESERVE 1
±1.9 AC

COMMERCIAL
RESERVE 2
±2.1 AC

COMMERCIAL
RESERVE 3
±5.7 AC

Old Montgomery Rd

3,178 CPD '21

Main Entrance/Drive
For Development

The Woodlands
Hills

±4,500 Future Homes

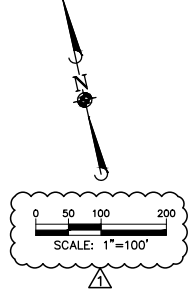
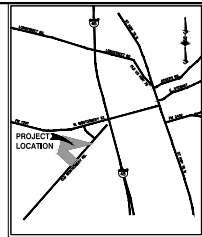
SURVEY

LEGEND

2.0-W	RIGHT-OF-WAY
1.0-L	BUILDING LINE
U.C.	UTILITY EASEMENT
A.E.	AERIAL EASEMENT
S.E.	SEWERAGE EASEMENT
P.A.E.	PRIVATE ACCESS EASEMENT
P.U.E.	PRIVATE UTILITY EASEMENT
FND.	FOUND
LR.	IRON ROD
FNC.	FENCE
MO.	MOULD
C.F.	CHAIN LINK FENCE
CONC.	CONCRETE
1/8"	SEWER
1/4"	SEWER
3/8"	SEWER
1/2"	SEWER
3/4"	SEWER
1"	SEWER
1 1/2"	SEWER
2"	SEWER
3"	SEWER
4"	SEWER
6"	SEWER
8"	SEWER
12"	SEWER
18"	SEWER
24"	SEWER
36"	SEWER
48"	SEWER
60"	SEWER
72"	SEWER
90"	SEWER
108"	SEWER
126"	SEWER
144"	SEWER
162"	SEWER
180"	SEWER
216"	SEWER
270"	SEWER
324"	SEWER
378"	SEWER
432"	SEWER
486"	SEWER
540"	SEWER
600"	SEWER
648"	SEWER
696"	SEWER
756"	SEWER
810"	SEWER
864"	SEWER
918"	SEWER
972"	SEWER
1026"	SEWER
1080"	SEWER
1134"	SEWER
1188"	SEWER
1242"	SEWER
1296"	SEWER
1350"	SEWER
1404"	SEWER
1458"	SEWER
1512"	SEWER
1566"	SEWER
1620"	SEWER
1674"	SEWER
1728"	SEWER
1782"	SEWER
1836"	SEWER
1890"	SEWER
1944"	SEWER
1998"	SEWER
2052"	SEWER
2106"	SEWER
2160"	SEWER
2214"	SEWER
2268"	SEWER
2322"	SEWER
2376"	SEWER
2430"	SEWER
2484"	SEWER
2538"	SEWER
2592"	SEWER
2646"	SEWER
2700"	SEWER
2754"	SEWER
2808"	SEWER
2862"	SEWER
2916"	SEWER
2970"	SEWER
3024"	SEWER
3078"	SEWER
3132"	SEWER
3186"	SEWER
3240"	SEWER
3294"	SEWER
3348"	SEWER
3402"	SEWER
3456"	SEWER
3510"	SEWER
3564"	SEWER
3618"	SEWER
3672"	SEWER
3726"	SEWER
3780"	SEWER
3834"	SEWER
3888"	SEWER
3942"	SEWER
3996"	SEWER
4050"	SEWER
4104"	SEWER
4158"	SEWER
4212"	SEWER
4266"	SEWER
4320"	SEWER
4374"	SEWER
4428"	SEWER
4482"	SEWER
4536"	SEWER
4590"	SEWER
4644"	SEWER
4698"	SEWER
4752"	SEWER
4806"	SEWER
4860"	SEWER
4914"	SEWER
4968"	SEWER
5022"	SEWER
5076"	SEWER
5130"	SEWER
5184"	SEWER
5238"	SEWER
5292"	SEWER
5346"	SEWER
5400"	SEWER
5454"	SEWER
5508"	SEWER
5562"	SEWER
5616"	SEWER
5670"	SEWER
5724"	SEWER
5778"	SEWER
5832"	SEWER
5886"	SEWER
5940"	SEWER
5994"	SEWER
6048"	SEWER
6102"	SEWER
6156"	SEWER
6210"	SEWER
6264"	SEWER
6318"	SEWER
6372"	SEWER
6426"	SEWER
6480"	SEWER
6534"	SEWER
6588"	SEWER
6642"	SEWER
6696"	SEWER
6750"	SEWER
6804"	SEWER
6858"	SEWER
6912"	SEWER
6966"	SEWER
7020"	SEWER
7074"	SEWER
7128"	SEWER
7182"	SEWER
7236"	SEWER
7290"	SEWER
7344"	SEWER
7398"	SEWER
7452"	SEWER
7506"	SEWER
7560"	SEWER
7614"	SEWER
7668"	SEWER
7722"	SEWER
7776"	SEWER
7830"	SEWER
7884"	SEWER
7938"	SEWER
7992"	SEWER
8046"	SEWER
8100"	SEWER
8154"	SEWER
8208"	SEWER
8262"	SEWER
8316"	SEWER
8370"	SEWER
8424"	SEWER
8478"	SEWER
8532"	SEWER
8586"	SEWER
8640"	SEWER
8694"	SEWER
8748"	SEWER
8802"	SEWER
8856"	SEWER
8910"	SEWER
8964"	SEWER
9018"	SEWER
9072"	SEWER
9126"	SEWER
9180"	SEWER
9234"	SEWER
9288"	SEWER
9342"	SEWER
9396"	SEWER
9450"	SEWER
9504"	SEWER
9558"	SEWER
9612"	SEWER
9666"	SEWER
9720"	SEWER
9774"	SEWER
9828"	SEWER
9882"	SEWER
9936"	SEWER
9990"	SEWER
10044"	SEWER
10098"	SEWER
10152"	SEWER
10206"	SEWER
10260"	SEWER
10314"	SEWER
10368"	SEWER
10422"	SEWER
10476"	SEWER
10530"	SEWER
10584"	SEWER
10638"	SEWER
10692"	SEWER
10746"	SEWER
10800"	SEWER
10854"	SEWER
10908"	SEWER
10962"	SEWER
11016"	SEWER
11070"	SEWER
11124"	SEWER
11178"	SEWER
11232"	SEWER
11286"	SEWER
11340"	SEWER
11394"	SEWER
11448"	SEWER
11502"	SEWER
11556"	SEWER
11610"	SEWER
11664"	SEWER
11718"	SEWER
11772"	SEWER
11826"	SEWER
11880"	SEWER
11934"	SEWER
11988"	SEWER
12042"	SEWER
12096"	SEWER
12150"	SEWER
12204"	SEWER
12258"	SEWER
12312"	SEWER
12366"	SEWER
12420"	SEWER
12474"	SEWER
12528"	SEWER
12582"	SEWER
12636"	SEWER
12690"	SEWER
12744"	SEWER
12798"	SEWER
12852"	SEWER
12906"	SEWER
12960"	SEWER
13014"	SEWER
13068"	SEWER
13122"	SEWER
13176"	SEWER
13230"	SEWER
13284"	SEWER
13338"	SEWER
13392"	SEWER
13446"	SEWER
13500"	SEWER
13554"	SEWER
13608"	SEWER
13662"	SEWER
13716"	SEWER
13770"	SEWER
13824"	SEWER
13878"	SEWER
13932"	SEWER
13986"	SEWER
14040"	SEWER
14094"	SEWER
14148"	SEWER
14202"	SEWER
14256"	SEWER
14310"	SEWER
14364"	SEWER
14418"	SEWER
14472"	SEWER
14526"	SEWER
14580"	SEWER
14634"	SEWER
14688"	SEWER
14742"	SEWER
14796"	SEWER
14850"	SEWER
14904"	SEWER
14958"	SEWER
15012"	SEWER
15066"	SEWER
15120"	SEWER
15174"	SEWER
15228"	SEWER
15282"	SEWER
15336"	SEWER
15390"	SEWER
15444"	SEWER
15498"	SEWER
15552"	SEWER
15606"	SEWER
15660"	SEWER
15714"	SEWER
15768"	SEWER
15822"	SEWER
15876"	SEWER
15930"	SEWER
15984"	SEWER
16038"	SEWER
16092"	SEWER
16146"	SEWER
16200"	SEWER
16254"	SEWER
16308"	SEWER
16362"	SEWER
16416"	SEWER
16470"	SEWER
16524"	SEWER
16578"	SEWER
16632"	SEWER
16686"	SEWER
16740"	SEWER
16794"	SEWER
16848"	SEWER
16902"	SEWER
16956"	SEWER
17010"	SEWER
17064"	SEWER
17118"	SEWER
17172"	SEWER
17226"	SEWER
17280"	SEWER
17334"	SEWER
17388"	SEWER
17442"	SEWER
17496"	SEWER
17550"	SEWER
17604"	SEWER
17658"	SEWER
17712"	SEWER
17766"	SEWER
17820"	SEWER
17874"	SEWER
17928"	SEWER
17982"	SEWER
18036"	SEWER
18090"	SEWER
18144"	SEWER
18198"	SEWER
18252"	SEWER
18306"	SEWER
18360"	SEWER
18414"	SEWER
18468"	SEWER
18522"	SEWER
18576"	SEWER
18630"	SEWER
18684"	SEWER
18738"	SEWER
18792"	SEWER
18846"	SEWER
18900"	SEWER
18954"	SEWER
19008"	SEWER
19062"	SEWER
19116"	SEWER
19170"	SEWER
19224"	SEWER
19278"	SEWER
19332"	SEWER
19386"	SEWER
19440"	SEWER
19494"	SEWER
19548"	SEWER
19602"	SEWER
19656"	SEWER
19710"	SEWER
19764"	SEWER
19818"	SEWER
19872"	SEWER
19926"	SEWER
19980"	SEWER
20034"	SEWER
20088"	SEWER
20142"	SEWER
20196"	SEWER
20250"	SEWER
20304"	SEWER
20358"	SEWER
20412"	SEWER
20466"	SEWER
20520"	SEWER
20574"	SEWER
20628"	SEWER
20682"	SEWER
20736"	SEWER
20790"	SEWER
20844"	SEWER
20898"	SEWER
20952"	SEWER
21006"	SEWER
21060"	SEWER
21114"	SEWER
21168"	SEWER
21222"	SEWER
21276"	SEWER
21330"	SEWER
21384"	SEWER
21438"	SEWER
21492"	SEWER
21546"	SEWER
21600"	SEWER
21654"	SEWER
21708"	SEWER
21762"	SEWER
21816"	SEWER
21870"	SEWER
21924"	SEWER
21978"	SEWER
22032"	SEWER
22086"	SEWER
22140"	SEWER
22194"	SEWER
22248"	SEWER
22302"	SEWER
22356"	SEWER
22410"	SEWER
22464"	SEWER
22518"	SEWER
22572"	SEWER
22626"	SEWER
22680"	SEWER
22734"	SEWER
22788"	SEWER
22842"	SEWER
22896"	SEWER
22950"	SEWER
23004"	SEWER
23058"	SEWER
23112"	SEWER
23166"	SEWER
23220"	SEWER
23274"	SEWER
23328"	SEWER
23382"	SEWER
23436"	SEWER
23490"	SEWER
23544"	SEWER
23598"	SEWER
23652"	SEWER
23706"	SEWER
23760"	SEWER
23814"	SEWER
23868"	SEWER
23922"	SEWER
23976"	SEWER
24030"	SEWER
24084"	SEWER
24138"	SEWER
24192"	SEWER
24246"	SEWER
24300"	SEWER
24354"	SEWER
24408"	SEWER
24462"	SEWER
24516"	SEWER
24570"	SEWER
24624"	SEWER
24678"	SEWER
24732"	SEWER
24786"	SEWER
24840"	SEWER
24894"	SEWER
24948"	SEWER
25002"	SEWER
25056"	SEWER
25110"	SEWER
25164"	SEWER
25218"	SEWER
25272"	SEWER
25326"	SEWER
25380"	SEWER
25434"	SEWER
25488"	SEWER
25542"	SEWER
25596"	SEWER
25650"	SEWER
25704"	SEWER
25758"	SEWER
25812"	SEWER
25866"	SEWER
25920"	SEWER
25974"	SEWER
26028"	SEWER
26082"	SEWER
26136"	SEWER
26190"	SEWER
26244"	SEWER
26298"	SEWER
26352"	SEWER
26406"	SEWER
26460"	SEWER
26514"	SEWER
26568"	SEWER
26622"	SEWER
26676"	SEWER
26730"	SEWER
26784"	SEWER
26838"	SEWER
26892"	SEWER
26946"	SEWER
27000"	SEWER
27054"	SEWER
27108"	SEWER
27162"	SEWER
27216"	SEWER
27270"	SEWER
27324"	SEWER
27378"	SEWER
27432"	SEWER
27486"	SEWER
27540"	SEWER
27594"	SEWER
27648"	SEWER
27702"	SEWER
27756"	SEWER
27810"	SEWER
27864"	SEWER
27918"	SEWER
27972"	SEWER
28026"	SEWER
28080"	SEWER
28134"	SEWER
28188"	SEWER
28242"	SEWER
28296"	SEWER
28350"	SEWER
28404"	SEWER
28458"	SEWER
28512"	SEWER
28566"	SEWER
28620"	SEWER
28674"	SEWER
28728"	SEWER
28782"	SEWER
28836"	SEWER
28890"	SEWER
28944"	SEWER
28998"	SEWER

DETENTION

ELEVATION
land solutions
TPEI REGISTRATION NUMBER F-22671
2445 TECHNOLOGY FOREST BLVD, SUITE 200
THE WOODLANDS, TX 77381 832-823-2200



BENCHMARKS:
SOURCE BENCHMARK:
ELEVATIONS SHOWN HEREON ARE BASED ON GPS OBSERVATIONS OF NATIONAL GEODETIC SURVEY (NGS) BENCHMARKS:
NOS #BL1266
LOCATED ABOUT 2.2 KM (1.35 MI) SOUTHERLY ALONG THE MISSOURI PACIFIC RAILROAD FROM ITS JUNCTION WITH STEWART STREET IN WELLS, BEING A DISK SET ON TOP OF A 4-FOOT LENGTH OF 5/8-INCH COPPER COATED STEEL ROD, AND PROTECTED BY A 6-INCH METAL PIPE WHICH PROJECTS 0.2 FOOT.
ELEVATION=332.00'
NOS #BL1269
LOCATED 0.6 KM (0.35 MI) SOUTH ALONG THE MISSOURI PACIFIC RAILROAD FROM ITS JUNCTION WITH STEWART STREET IN WELLS, BEING A DISK SET ON TOP OF A 5/8-INCH COPPER COATED STEEL ROD, AND PROTECTED BY A 6-INCH METAL PIPE WHICH PROJECTS 1/2-FOOT. THE ROD WAS DRIVEN TO A DEPTH OF 96 FEET.
ELEVATION=332.94'
NOS #BL1274
LOCATED 0.4 KM (0.25 MI) NORTH ALONG THE MISSOURI PACIFIC RAILROAD FROM ITS JUNCTION WITH STEWART STREET IN WELLS, 76.9 FEET SOUTHWEST OF A POWER POLE, BEING A DISK SET ON TOP OF A 5/8-INCH COPPER COATED STEEL ROD, AND PROTECTED BY A 6-INCH CONCRETE PIPE WHICH PROJECTS 1/2-FOOT. THE ROD WAS DRIVEN TO A DEPTH OF 28 1/2 FEET.
ELEVATION=368.29'

FLOODPLAIN INFORMATION:
BASED ON THE FLOOD INSURANCE RATE MAP NOS: 48390C0260 & 48390C0400, MAPS REVISED DATE OF AUGUST 18, 2014 INDICATES THAT TRACT LIES WITHIN AREA ZONE "X" (UNSHADED) AREAS DETERMINED TO BE OUTSIDE THE 0.2% ANNUAL CHANCE FLOODPLAIN. IN ADDITION THIS MAP STATES "THIS MAP IS FOR USE IN ADMINISTERING THE NATIONAL FLOOD INSURANCE PROGRAM. IT DOES NOT NECESSARILY IDENTIFY ALL AREAS SUBJECT TO FLOODING, PARTICULARLY FROM LOCAL DRAINAGE SOURCES OF SMALL SIZE, OR ALL PLANIMETRIC FEATURES OUTSIDE SPECIAL FLOOD HAZARD AREAS. CERTAIN AREAS NOT IN SPECIAL FLOOD HAZARD AREAS MAY BE PROTECTED BY FLOOD CONTROL STRUCTURES". THE APPROXIMATE LIMITS OF SAD ZONES AS DETERMINED HEREON ARE SCALD FROM SAD MAP. THIS INFORMATION IS NOT INTENDED TO IDENTIFY SPECIFIC FLOOD CONDITIONS.

DATE	REVISION	APP.
08/26/2021	CITY OF WELLS COMMENT REVISIONS	
12/27/2021	CITY OF WELLS COMMENT REVISIONS	
04/27/2022	BASIN & MITIGATION REVISIONS	DR

STORM WATER POLLUTION PREVENTION PLAN

ENGINEER'S SEAL
RYAN WADE
2445 TECHNOLOGY FOREST
BLVD, SUITE 200
THE WOODLANDS, TX 77381
(832) 823-2200
Ryan Wade
TPEI NO. F-22671 11/3/2021



IF THESE PLANS HAVE BEEN REVISED FOR COMPLIANCE WITH THE CITY OF WELLS ADOPTED CODES AND ORDINANCES, ANY CHANGES OR MODIFICATIONS IN THE PLAN REVIEW PROCESS SHALL NOT RELEASE THE PERMIT HOLDERS RESPONSIBILITY TO COMPLY WITH ALL APPLICABLE CODES, ORDINANCES AND CONSTRUCTION STANDARDS.
11/19/2021

SHEET 9 OF 10

STABILIZED CONSTRUCTION ACCESS TO BE PROVIDED AT THE NORTH EAST DRIVEWAY OFF OF OLD MONTGOMERY ROAD WITHIN THE SUBJECT TRACT.
DRIVEWAY IS APPROX. ~ 190' SOUTH WEST OF THE OLD MONTGOMERY RD AND THE INTERSTATE 45 SERVICE ROAD INTERSECTION.

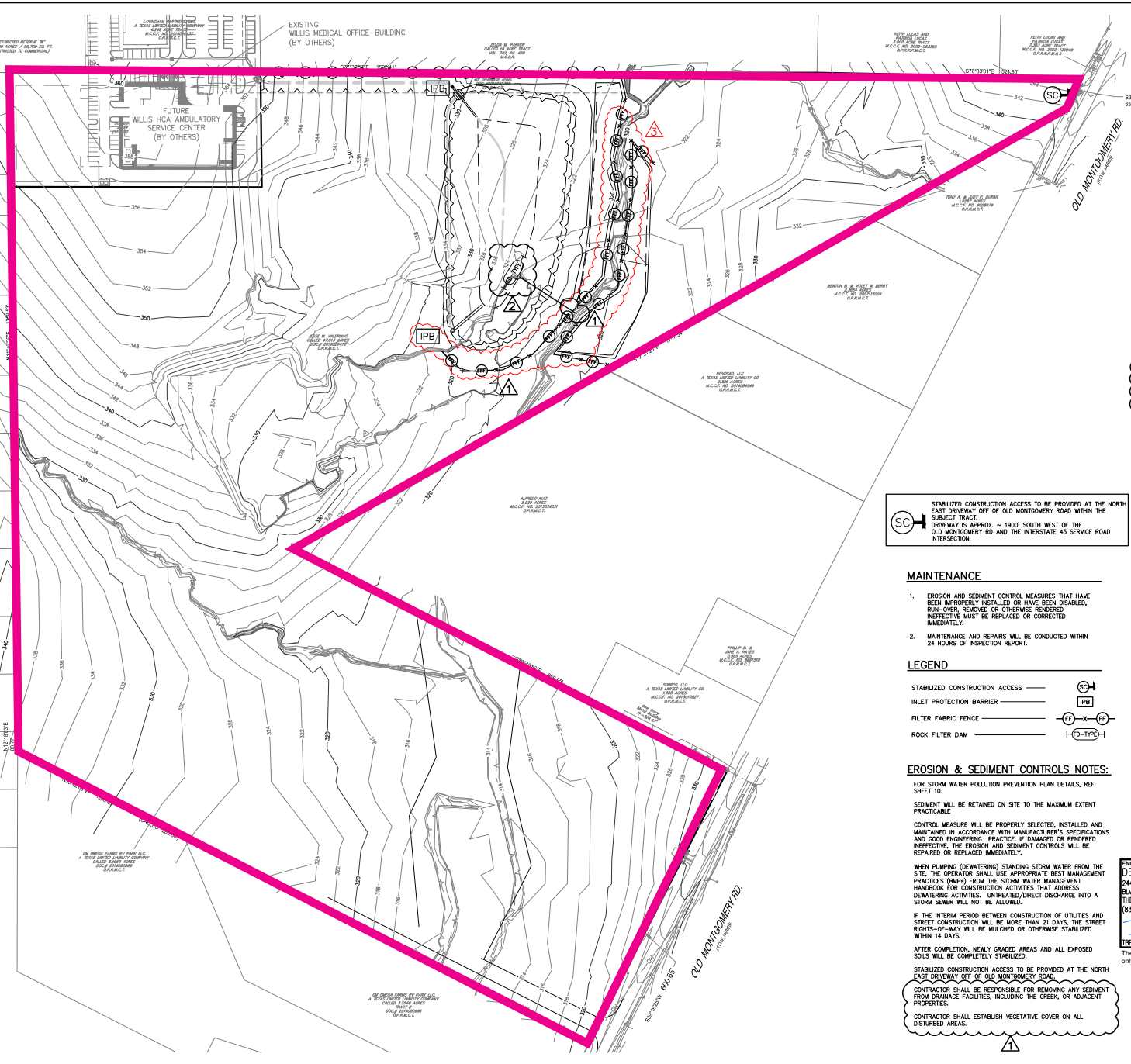
- MAINTENANCE**
- EROSION AND SEDIMENT CONTROL MEASURES THAT HAVE BEEN IMPROPERLY INSTALLED OR HAVE BEEN DISABLED, RUN-OVER, REMOVED OR OTHERWISE RENDERED INEFFECTIVE MUST BE REPLACED OR CORRECTED IMMEDIATELY.
 - MAINTENANCE AND REPAIRS WILL BE CONDUCTED WITHIN 24 HOURS OF INSPECTION REPORT.
- LEGEND**
- STABILIZED CONSTRUCTION ACCESS
 - INLET PROTECTION BARRIER
 - FILTER FABRIC FENCE
 - ROCK FILTER DAM

EROSION & SEDIMENT CONTROLS NOTES:
FOR STORM WATER POLLUTION PREVENTION PLAN DETAILS, REF: SHEET 10.
SEDIMENT WILL BE RETAINED ON SITE TO THE MAXIMUM EXTENT PRACTICABLE.
CONTROL MEASURE WILL BE PROPERLY SELECTED, INSTALLED AND MAINTAINED IN ACCORDANCE WITH MANUFACTURER'S SPECIFICATIONS AND GOOD ENGINEERING PRACTICE. IF DAMAGED OR RENDERED INEFFECTIVE, THE EROSION AND SEDIMENT CONTROLS WILL BE REPAIRED OR REPLACED IMMEDIATELY.
WHEN PUMPING (DEWATERING) STANDING STORM WATER FROM THE SITE, THE OPERATOR SHALL USE APPROPRIATE BEST MANAGEMENT PRACTICES (BMPs) FROM THE STORM WATER MANAGEMENT HANDBOOK FOR CONSTRUCTION ACTIVITIES THAT ADDRESS DEWATERING ACTIVITIES. UNTREATED/DIRECT DISCHARGE INTO A STORM SEWER WILL NOT BE ALLOWED.
IF THE INTERIM PERIOD BETWEEN CONSTRUCTION OF UTILITIES AND STREET CONSTRUCTION WILL BE MORE THAN 21 DAYS, THE STREET RIGHTS-OF-WAY WILL BE MULCHED OR OTHERWISE STABILIZED WITHIN 14 DAYS.
AFTER COMPLETION, NEWLY GRADED AREAS AND ALL EXPOSED SOILS WILL BE COMPLETELY STABILIZED.
STABILIZED CONSTRUCTION ACCESS TO BE PROVIDED AT THE NORTH EAST DRIVEWAY OFF OF OLD MONTGOMERY ROAD.
CONTRACTOR SHALL BE RESPONSIBLE FOR REMOVING ANY SEDIMENT FROM DRAINAGE FACILITIES, INCLUDING THE CREEK, OR ADJACENT PROPERTIES.
CONTRACTOR SHALL ESTABLISH VEGETATIVE COVER ON ALL DISTURBED AREAS.

ENGINEER'S SEAL
DEAN RASMUSON
2445 TECHNOLOGY FOREST
BLVD, SUITE 200
THE WOODLANDS, TX 77381
(832) 823-2200
Dean Rasmuson
TPEI NO. F-22671 6/8/2022



The Engineer's Seal, signed and dated above, is for revision #3 & #4 only.



CONCEPTUAL SITE PLAN

BGE | KERRY R. GILBERT & ASSOCIATES

BGE | KERRY R. GILBERT & ASSOCIATES



OPTION A

THIS DRAWING IS AN ARTIST'S REPRESENTATION FOR PRESENTATION PURPOSES ONLY AND IS SUBJECT TO CHANGE. FURTHER AND DETAILED DESIGN IS A SEPARATE TASK AND IS NOT FOR CONSTRUCTION OR CONSTRUCTION PURPOSES. THIS DRAWING MAY OR MAY NOT INCORPORATE INFORMATION AND/OR DATA PROVIDED TO BGE | KERRY R. GILBERT & ASSOCIATES BY OTHER CONSULTANTS RELATIVE TO ENGINEERING AND DRAINAGE PLANS, PLANS AND ENVIRONMENTAL ISSUES AND SHOULD NOT BE RELIED UPON FOR ANY PURPOSE. NO WARRANTIES, EXPRESS OR IMPLIED, CONCERNING THE ACTUAL LOCATION AND CHARACTERISTICS OF THE FACILITIES SHOWN ON THIS MAP ARE INTENDED. ADDITIONALLY, NO WARRANTY IS MADE TO THE ACCURACY OF THE INFORMATION CONTAINED HEREIN.

LANDUSE		TOTAL BUILDING SQ. FT.	FLOORING PROVIDED	PARKING RATIO	ACRES
OFFICE					
O1	OFFICE BUILDING	50,000 S.F.	236	4.97/1000	13.6
O2	OFFICE BUILDING	40,000 S.F.	188	4.77/1000	13.5
O3	OFFICE WAREHOUSE	244,500 S.F.	486	2.07/1000	220.0
O4	OFFICE WAREHOUSE	43,750 S.F.	700	2.27/1000	24.2
WATER					
R.O.W.					14.0
DETENTION					110.9
TOTAL		378,250 S.F.			147.0

a conceptual development plan for
± 47.0 ACRES OF LAND
 prepared for
JESSE VALERIANO



— Land Planning Consultants —
 23501 Cirrus Ranch Blvd., Suite A-200
 Katy, Texas 77494
 7000 North Mezac, Suite 330
 Austin, TX 78731
 2595 Dallas Parkway, Suite 204
 Frisco, TX 75034

Tel: 281-579-0340

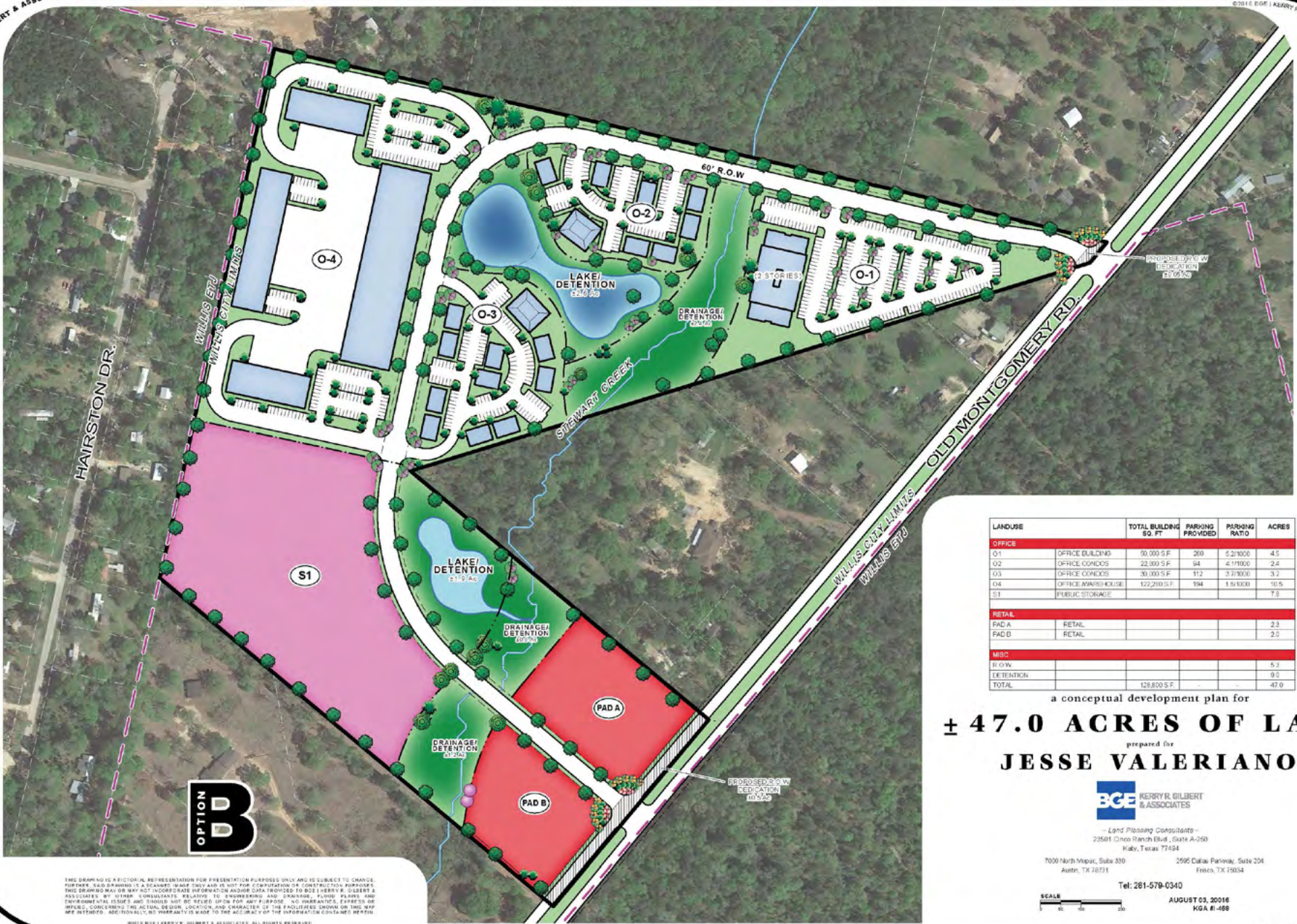
SCALE
 0 50 100 200

AUGUST 05, 2016
 KGA #1-458

BGE | KERRY R. GILBERT & ASSOCIATES

CONCEPTUAL SITE PLAN

BOE | KERRY R. GILBERT & ASSOCIATES



LANDUSE	TOTAL BUILDING SQ. FT.	PARKING PROVIDED	FLOORING RATIO	ACRES
OFFICE				
O-1	OFFICE BUILDING 50,000 S.F.	260	5.2/1000	4.5
O-2	OFFICE CONDOS 22,300 S.F.	94	4.1/1000	2.4
O-3	OFFICE CONDOS 30,000 S.F.	112	3.7/1000	3.2
O-4	OFFICE WAREHOUSE 122,200 S.F.	194	1.5/1000	10.5
S1	PUBLIC STORAGE			7.5
RETAIL				
PAD A	RETAIL			2.3
PAD B	RETAIL			2.0
MISC				
ST. O.V.				5.1
DETENTION				9.0
TOTAL	128,800 S.F.			47.0

a conceptual development plan for
± 47.0 ACRES OF LAND
 prepared for
JESSE VALERIANO



Land Planning Consultants
 21501 Cinco Ranch Blvd., Suite A-250
 Katy, Texas 77454
 7000 North Maple, Suite 330
 Austin, TX 78731
 2590 Dallas Parkway, Suite 204
 Frisco, TX 75034

Tel: 281-579-0340



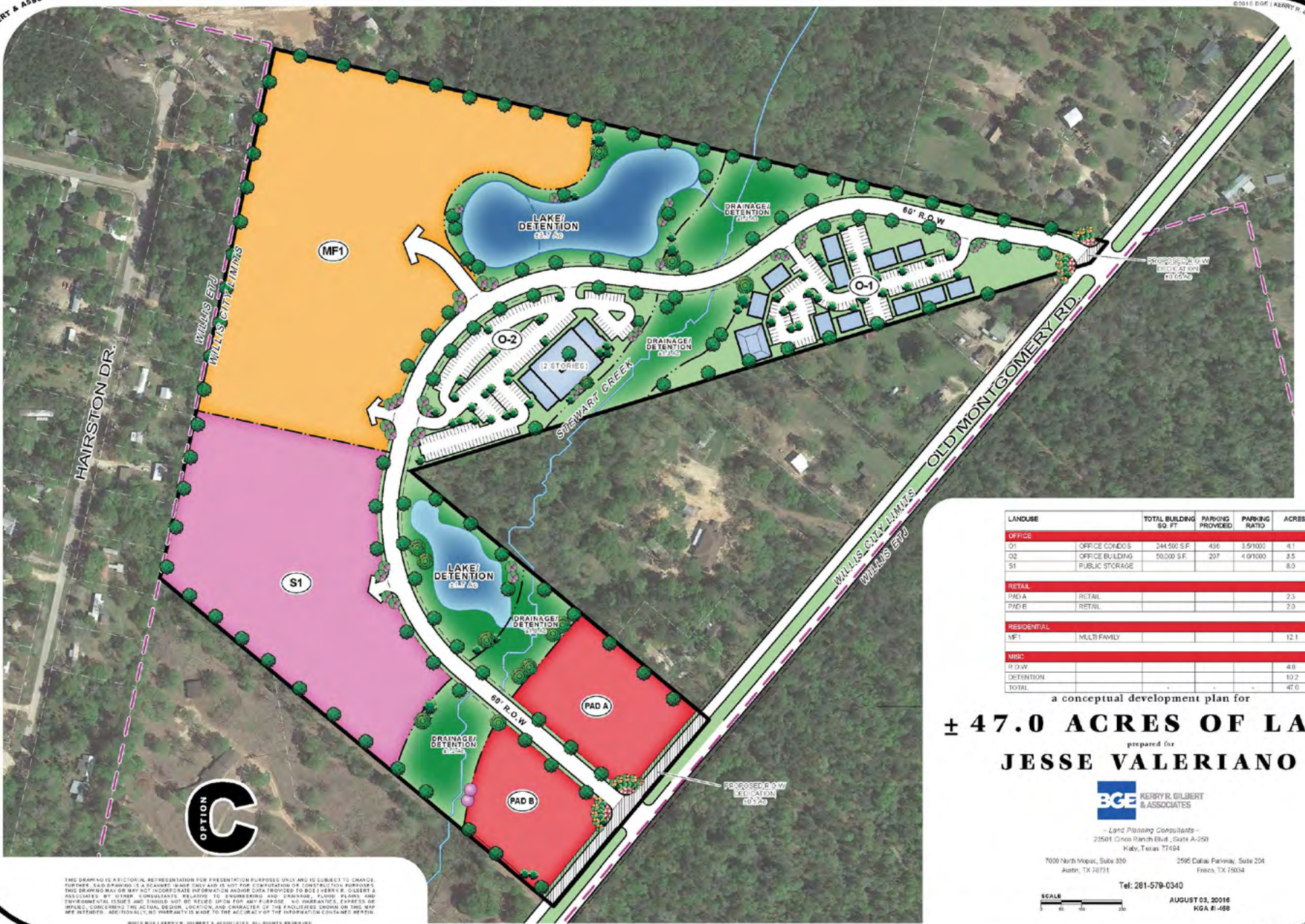
AUGUST 03, 2016
 KGA 8-166

THIS DRAWING IS A FICTITIOUS REPRESENTATION FOR PRESENTATION PURPOSES ONLY AND IS SUBJECT TO CHANGE. FURTHER AND DRAWING IS A SCHEMATIC AND NOT FOR CONSTRUCTION OR CONTRACTOR PURPOSES. THIS DRAWING MAY OR MAY NOT ACCURATE INFORMATION AND/OR DATA PROVIDED TO BOE | KERRY R. GILBERT & ASSOCIATES BY OTHER CONSULTANTS RELATIVE TO ENGINEERING AND DRAINAGE, FLOOD PLAINS AND ENVIRONMENTAL ISSUES AND SHOULD NOT BE RELIED UPON FOR ANY PURPOSE. NO WARRANTIES, EXPRESS OR IMPLIED, CONCERNING THE ACCURACY, LOCATION AND CHARACTER OF THE FACILITIES SHOWN ON THIS MAP ARE INTENDED. ADDITIONALLY, NO WARRANTY IS MADE TO THE ACCURACY OF THE INFORMATION CONTAINED HEREIN.

OPTION B

CONCEPTUAL SITE PLAN

BOE | KERRY R. GILBERT & ASSOCIATES



LANDUSE		TOTAL BUILDING SQ. FT.	PARKING PROVIDED	PARKING RATIO	ACRES
OFFICE					
O1	OFFICE CONDOS	244,500 S.F.	436	1.5/1000	4.1
O2	OFFICE BUILDING	50,000 S.F.	207	4.0/1000	3.5
S1	PUBLIC STORAGE				8.0
RETAIL					
PAD A	RETAIL				2.3
PAD B	RETAIL				2.9
RESIDENTIAL					
MF1	MULTI FAMILY				12.1
MISC.					
R.O.W.	DETENTION				4.8
					10.3
TOTAL					47.0

a conceptual development plan for
± 47.0 ACRES OF LAND
 prepared for
JESSE VALERIANO



Land Planning Consultants
 22501 Cinco Ranch Blvd., Suite A-250
 Katy, Texas 77454
 7000 North Maple, Suite 330
 Austin, TX 78731
 2590 Dallas Parkway, Suite 204
 Frisco, TX 75034

Tel: 281-579-0340



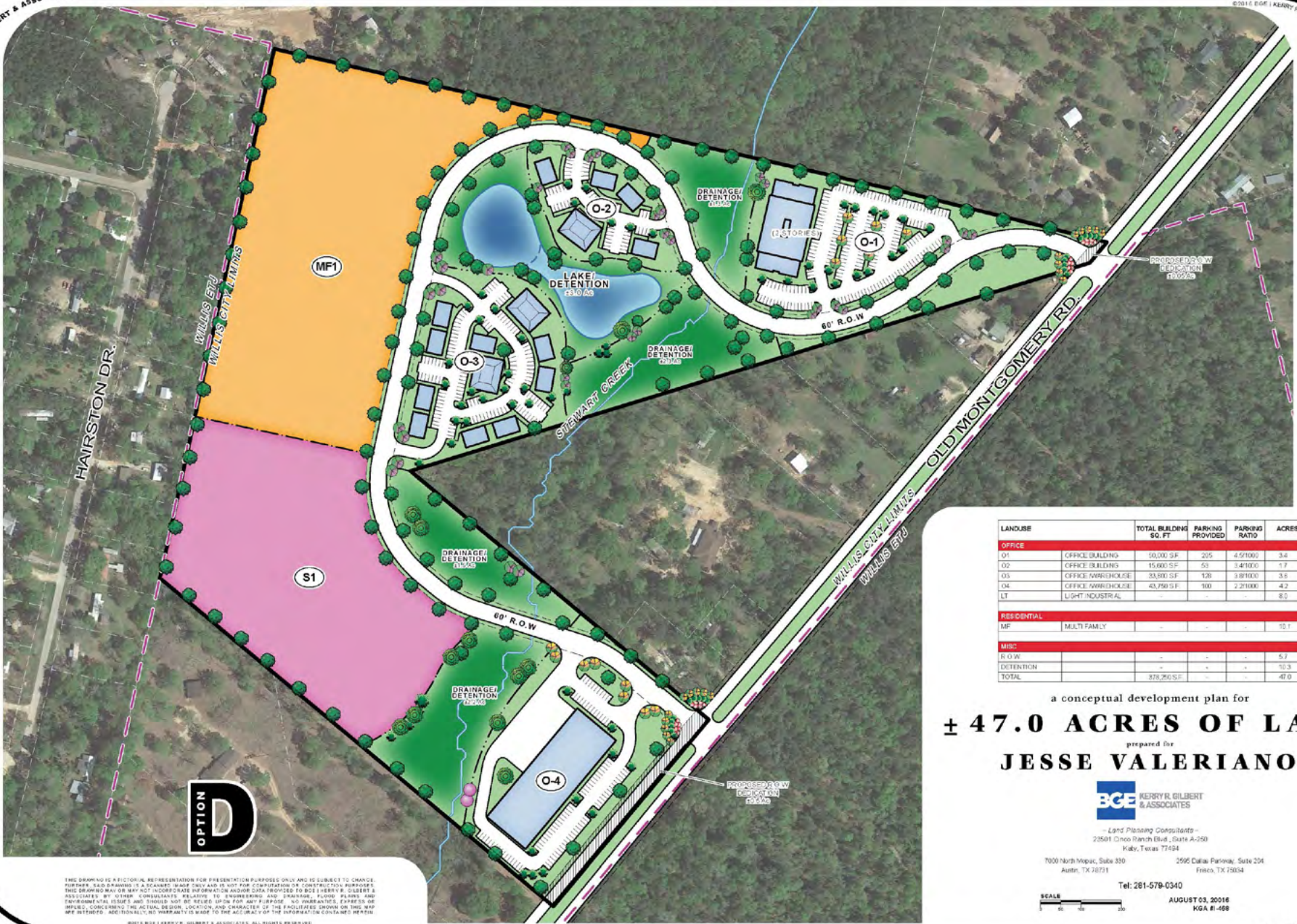
AUGUST 03, 2016
 KGA 81-468

THIS DRAWING IS A FICTITIOUS REPRESENTATION FOR PRESENTATION PURPOSES ONLY AND IS SUBJECT TO CHANGE. FURTHER AND DRAWING IS A SCHEME MADE THIS AND IS NOT FOR CONSTRUCTION OR CONTRACTOR PURPOSES. THIS DRAWING MAY OR MAY NOT INCORPORATE INFORMATION AND/OR DATA PROVIDED TO BOE | KERRY R. GILBERT & ASSOCIATES BY OTHER CONSULTANTS RELATED TO ENGINEERING AND DRAINAGE, FLOOD, PLANNING AND ENVIRONMENTAL ISSUES AND SHOULD NOT BE RELIED UPON FOR ANY PURPOSE. NO WARRANTIES, EXPRESS OR IMPLIED, CONCERNING THE ACCURACY, LOCATION AND CHARACTER OF THE FACILITIES SHOWN ON THIS MAP ARE INTENDED. ADDITIONALLY, NO WARRANTY IS MADE TO THE ACCURACY OF THE INFORMATION CONTAINED HEREIN.

BOE | KERRY R. GILBERT & ASSOCIATES, ALL RIGHTS RESERVED.

CONCEPTUAL SITE PLAN

BGE | KERRY R. GILBERT & ASSOCIATES



OPTION D

THIS DRAWING IS A FICTITIOUS REPRESENTATION FOR PRESENTATION PURPOSES ONLY AND IS SUBJECT TO CHANGE. FURTHER AND DRAWING IS A SCHEMATIC AND SHOULD NOT BE USED FOR CONSTRUCTION OR CONTRACTING PURPOSES. THIS DRAWING MAY OR MAY NOT ACCURATE INFORMATION AND/OR DATA PROVIDED TO BGE | KERRY R. GILBERT & ASSOCIATES BY OTHER CONSULTANTS RELATED TO ENGINEERING AND DRAINAGE, FLOOD, PLANNING AND ENVIRONMENTAL ISSUES AND SHOULD NOT BE RELIED UPON FOR ANY PURPOSE. NO WARRANTIES, EXPRESS OR IMPLIED, CONCERNING THE QUALITY, LOCATION AND CHARACTER OF THE FACILITIES SHOWN ON THIS MAP ARE INTENDED. ADDITIONALLY, NO WARRANTY IS MADE TO THE ACCURACY OF THE INFORMATION CONTAINED HEREIN.

LANDUSE	TOTAL BUILDING SQ. FT.	PARKING PROVIDED	PARKING RATIO	ACRES
OFFICE				
O1	50,000 SF	205	4.5/1000	3.4
O2	15,600 SF	53	3.4/1000	1.7
O3	33,800 SF	126	3.8/1000	3.6
O4	43,750 SF	100	2.2/1000	4.2
LT				8.0
RESIDENTIAL				
MF	MULTI-FAMILY			10.1
MISC				
R.O.W.				5.7
DETENTION				10.3
TOTAL	183,150 SF			47.0

a conceptual development plan for
± 47.0 ACRES OF LAND
 prepared for
JESSE VALERIANO



Land Planning Consultants
 23501 Cinco Ranch Blvd., Suite A-250
 Katy, Texas 77454
 7000 North Maple, Suite 330
 Austin, TX 78731
 2590 Dallas Parkway, Suite 204
 Frisco, TX 75034

Tel: 281-579-0340



AUGUST 03, 2016
 KGA R-166

©2016 BGE | KERRY R. GILBERT & ASSOCIATES, INC. ALL RIGHTS RESERVED.

BGE | KERRY R. GILBERT & ASSOCIATES



Information About Brokerage Services

Texas law requires all real estate license holders to give the following information about brokerage services to prospective buyers, tenants, sellers and landlords.

TYPES OF REAL ESTATE LICENSE HOLDERS:

- A **BROKER** is responsible for all brokerage activities, including acts performed by sales agents sponsored by the broker.
- A **SALES AGENT** must be sponsored by a broker and works with clients on behalf of the broker.

A BROKER'S MINIMUM DUTIES REQUIRED BY LAW (A client is the person or party that the broker represents):

- Put the interests of the client above all others, including the broker's own interests;
- Inform the client of any material information about the property or transaction received by the broker;
- Answer the client's questions and present any offer to or counter-offer from the client; and
- Treat all parties to a real estate transaction honestly and fairly.

A LICENSE HOLDER CAN REPRESENT A PARTY IN A REAL ESTATE TRANSACTION:

AS AGENT FOR OWNER (SELLER/LANDLORD): The broker becomes the property owner's agent through an agreement with the owner, usually in a written listing to sell or property management agreement. An owner's agent must perform the broker's minimum duties above and must inform the owner of any material information about the property or transaction known by the agent, including information disclosed to the agent or subagent by the buyer or buyer's agent.

AS AGENT FOR BUYER/TENANT: The broker becomes the buyer/tenant's agent by agreeing to represent the buyer, usually through a written representation agreement. A buyer's agent must perform the broker's minimum duties above and must inform the buyer of any material information about the property or transaction known by the agent, including information disclosed to the agent by the seller or seller's agent.

AS AGENT FOR BOTH - INTERMEDIARY: To act as an intermediary between the parties the broker must first obtain the written agreement of each party to the transaction. The written agreement must state who will pay the broker and, in conspicuous bold or underlined print, set forth the broker's obligations as an intermediary. A broker who acts as an intermediary:

- Must treat all parties to the transaction impartially and fairly;
- May, with the parties' written consent, appoint a different license holder associated with the broker to each party (owner and buyer) to communicate with, provide opinions and advice to, and carry out the instructions of each party to the transaction.
- Must not, unless specifically authorized in writing to do so by the party, disclose:
 - that the owner will accept a price less than the written asking price;
 - that the buyer/tenant will pay a price greater than the price submitted in a written offer; and
 - any confidential information or any other information that a party specifically instructs the broker in writing not to disclose, unless required to do so by law

AS SUBAGENT: A license holder acts as a subagent when aiding a buyer in a transaction without an agreement to represent the buyer. A subagent can assist the buyer but does not represent the buyer and must place the interests of the owner first.

TO AVOID DISPUTES, ALL AGREEMENTS BETWEEN YOU AND A BROKER SHOULD BE IN WRITING AND CLEARLY ESTABLISH:

- The broker's duties and responsibilities to you, and your obligations under the representation agreement.
- Who will pay the broker for services provided to you, when payment will be made and how the payment will be calculated.

LICENSE HOLDER CONTACT INFORMATION: This notice is being provided for information purposes. It does not create an obligation for you to use the broker's services. Please acknowledge receipt of this notice below and retain a copy for your records.

Blue Ox Brokerage, LLC	9009549	jj@blueoxgroup.com	713.804.7777
Licensed Broker /Broker Firm Name or Primary Assumed Business Name	License No.	Email	Phone
Joshua Jacobs	448255	jj@blueoxgroup.com	713.230.8882
Designated Broker of Firm	License No.	Email	Phone
Licensed Supervisor of Sales Agent/ Associate	License No.	Email	Phone
Claire Salazar	764131	cs@blueoxgroup.com	713.574.6281
Sales Agent/Associate's Name	License No.	Email	Phone

Buyer/Tenant/Seller/Landlord Initials

Date

Regulated by the
Texas Real Estate Commission

Information available at www.trec.texas.gov

IABS 1-0

SITE

45

130,239 CPD '24

Kroger Marketplace

TSC TRACTOR SUPPLY CO
DUTCH BROS
garden of eatin'
Jack in the box

H-E-B
AutoZone
SONIC
DOLLAR GENERAL
TACO BELL
MOD

Cross Access with Adjacent Property

22,020 CPD '24

CVS

Jordan Marsh SUPERCUTS
SHERWIN WILLIAMS

Walgreens
Starbucks
McDonald's

HOTWORX
Red Roof

1097

On Site Detention & Utilities Provided

COMMERCIAL RESERVE 3
±5.7 AC

±35 AC LAND AVAILABLE

The Woodlands Hills
±4,500 Future Homes

±45 ACRES LAND AVAILABLE FOR SALE

SWQ I-45 & Old Montgomery Rd | Willis, TX

Main Entrance/Drive

Josh Jacobs | 713.230.8882
jj@blueoxgroup.com

Claire Salazar | 713.574.6281
cs@blueoxgroup.com



WWW.BLUEOXGROUP.COM