

1610 Algonquin St

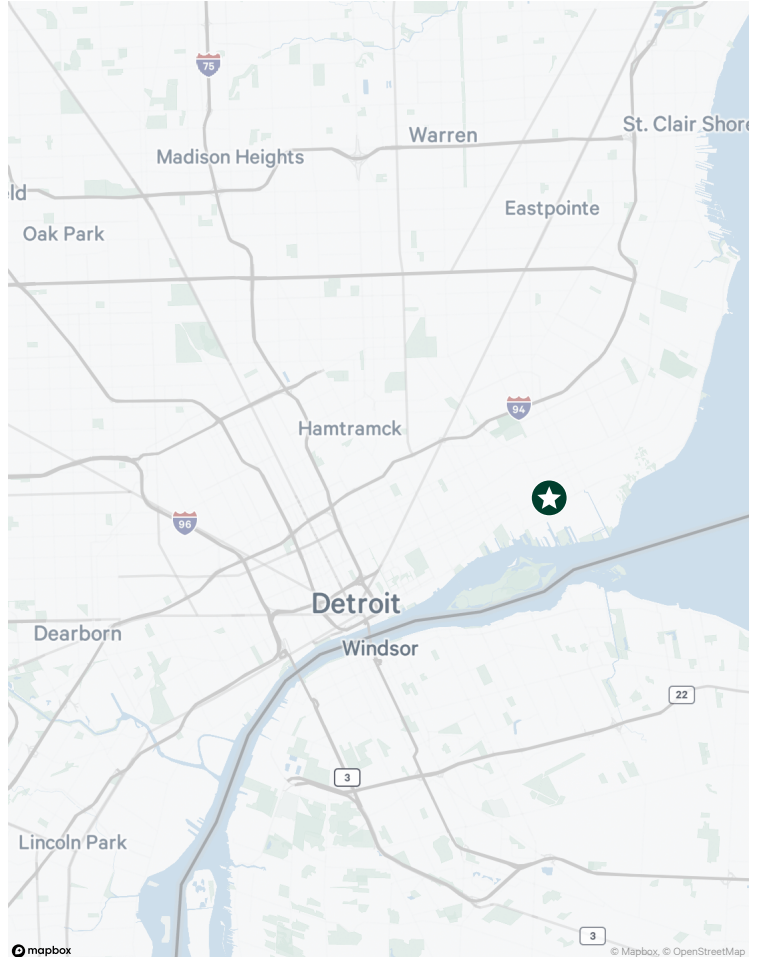
Detroit, MI

2.5 Acre Lot For Lease Next To New Storage Development & Stellantis Jefferson Plant



Property Features

- + 2.5 Acre Lot
- + M-4 Intensive Industrial
- + Crushed Gravel Throughout
- + Excellent for Trailer Parking and Staging
- + Across from the Stalantis Jefferson North Assembly Plant
- + Easy Access to Jefferson Ave and I-94
- + Fenced and Gated
- + Asking Rate: Contact Listing Agent



Contact Us

Matt Osiecki

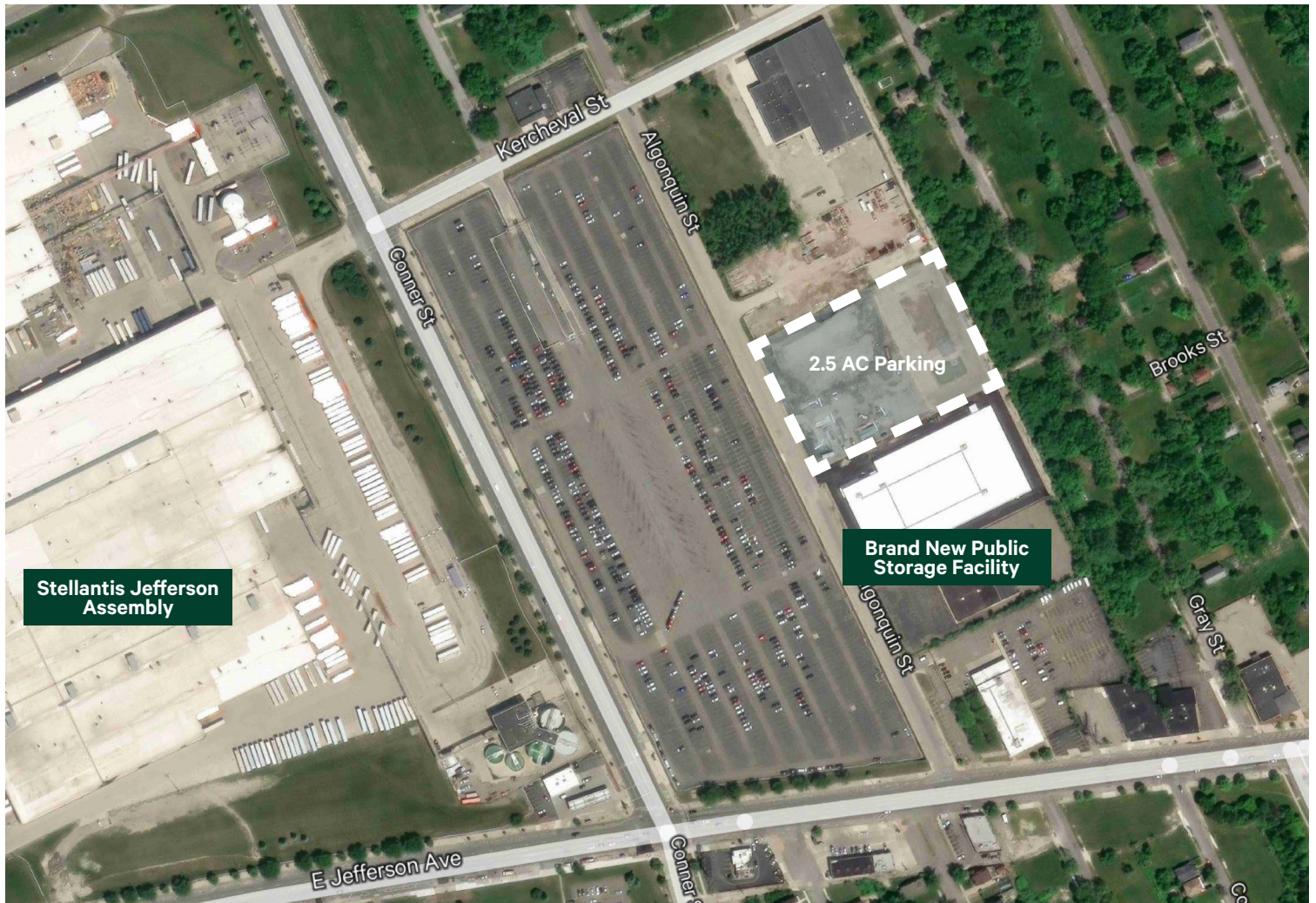
First Vice President
+1 248 351 2079
matt.osiecki@cbre.com

Joe Kemp

Vice President
+1 248 353 5400
joe.kemp@cbre.com

© 2026 CBRE, Inc. All rights reserved. This information has been obtained from sources believed reliable but has not been verified for accuracy or completeness. CBRE, Inc. makes no guarantee, representation or warranty and accepts no responsibility or liability as to the accuracy, completeness, or reliability of the information contained herein. You should conduct a careful, independent investigation of the property and verify all information. Any reliance on this information is solely at your own risk.

Aerial



Contact Us

Matt Osiecki

First Vice President
+1 248 351 2079
matt.osiecki@cbre.com

Joe Kemp

Vice President
+1 248 353 5400
joe.kemp@cbre.com

© 2026 CBRE, Inc. All rights reserved. This information has been obtained from sources believed reliable but has not been verified for accuracy or completeness. CBRE, Inc. makes no guarantee, representation or warranty and accepts no responsibility or liability as to the accuracy, completeness, or reliability of the information contained herein. You should conduct a careful, independent investigation of the property and verify all information. Any reliance on this information is solely at your own risk.

Aerial Photos



Contact Us

Matt Osiecki

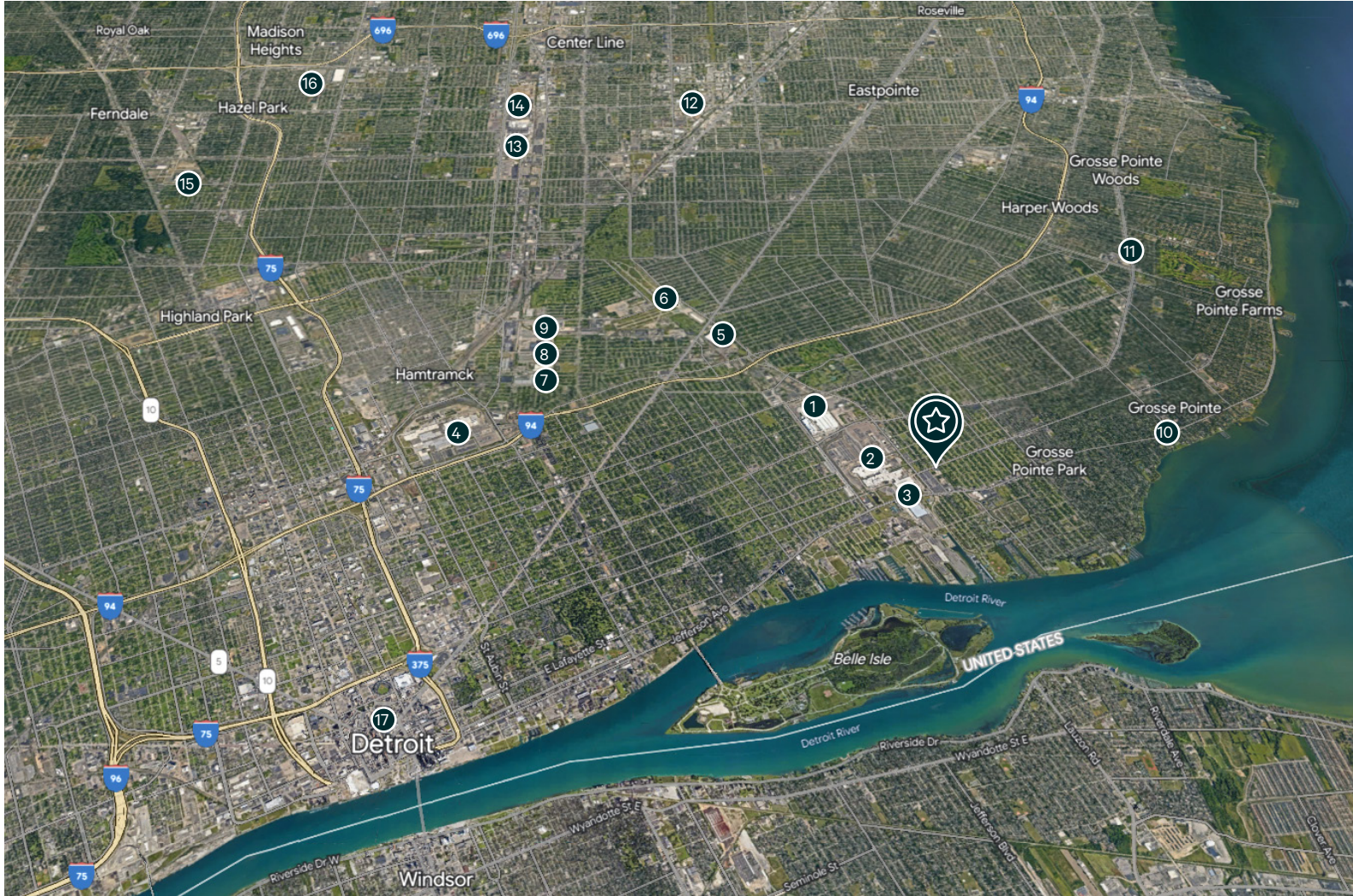
First Vice President
+1 248 351 2079
matt.osiecki@cbre.com

Joe Kemp

Vice President
+1 248 353 5400
joe.kemp@cbre.com

© 2026 CBRE, Inc. All rights reserved. This information has been obtained from sources believed reliable but has not been verified for accuracy or completeness. CBRE, Inc. makes no guarantee, representation or warranty and accepts no responsibility or liability as to the accuracy, completeness, or reliability of the information contained herein. You should conduct a careful, independent investigation of the property and verify all information. Any reliance on this information is solely at your own risk.

Regional Map



☆ 1610 Algonquin St - Detroit, MI

1 Stellantis Mack Assembly Plant

2 Stellantis Jefferson North Assembly Plant

3 Chrysler Group, LLC

4 GM Factory ZERO, Detroit Hamtramck Assembly Plant

5 Lear Corporation - Conner Ave, Detroit Plant

6 Coleman A. Young International Airport

7 Universal Logistics

8 Flex-N-Gate

9 DWSD

10 Beaumont Hospital Grosse Pointe

11 Ascension St John Hospital

12 Warren Truck Assembly Plant

13 Chrysler Group, LLC - Warren Truck Assembly Plant

14 FCA Warren Stamping Plant

15 Amazon Detroit

16 Amazon Hazel Park

17 Downtown Detroit