

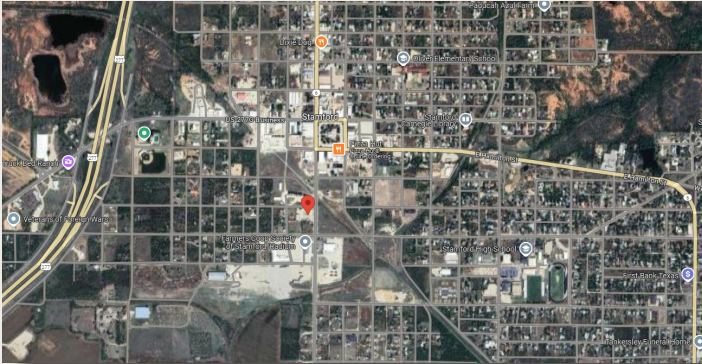


TRANSWESTERN

REAL ESTATE
SERVICES

FOR SALE | 412 SWENSON STREET, STAMFORD, TX 79553

2,706 SF OF IMPROVEMENTS ON A 0.57 AC HARD CORNER COMMERCIAL LOT



LOCATION:	This property is located at the hard corner Swenson St & McLendon St near the center of town.	TOPOGRAPHY:	Flat
SIZE:	Approximately 0.57 Acres	FLOOD HAZARD:	The Property does not reside in the FEMA Floodplain
FRONTAGE/ ACCESS:	Property fronts Swenson St. Can be accessed by both Swenson and McLendon Streets.	SCHOOL DISTRICT:	Stamford ISD
UTILITIES:	Water, Sewage & Electricity	JURISDICTION:	City of Stamford
ZONING:	Commercial	PRICE:	Contact Broker for Pricing
		COMMENTS:	Great commercial property for an investor or user. ~1,806 SF Building & ~900 SF Storage Facility.

**CONTACT
FOR PRICING**

BRYAN MCMURREY
Managing Director
512.314.3971
bryan.mcmurrey@transwestern.com

RYE HINKLE
Senior Associate
512.314.5215
rye.hinkle@transwestern.com