

FOR LEASE

299 BANK STREET

Ottawa, ON K2P 0J9



JOHN ZINATI
+1(613)880.4106
john@zinatirealty.com

TANYA WOLFGAM
+1(613)447.2205
tanya@zinatirealty.com

92 CENTREPOINTE DRIVE • OTTAWA, ON K2G 6B1 • 613.853.4106 • ZINATIREALTY.COM

 **ZINATI**
REALTY
COMMERCIAL BROKERAGE



OFFERING SUMMARY

| | |
|-------------------------|------------------------------------|
| Available Space: | 6,000 - 18,000 SF |
| Lease Rate: | \$10.00 - 30.00 SF/yr (Gross; NNN) |
| Additional Rent: | approx. \$11.66 SF/yr |

PROPERTY OVERVIEW

This two-storey walk-up retail/office building plus full height basement for a total building area of approx. 18,000 SF. Located in the heart of Centretown on one of the busiest corners at Bank and Somerset Street. A long-standing established Dollar Store occupies the ground floor and lower level of approx. 12,000 SF with a lease that expires August 31, 2026. The second-floor office tenant is renting on a month-to-month basis, and has approx. 6,000 SF of creative open concept office space includes a kitchenette and two large washrooms. Large staircase landings could accommodate a future elevator if desired by the purchaser. Opportunity for the purchaser to occupy part of or the whole building. No options to renew in place, but both tenants are willing to stay. This property sits on a 55' x 115' lot with easy access to HWY 417 and transit nearby including buses along Bank Street or a quick walk to the Parliament O-Train Station. Close proximity to many amenities such as shops, restaurants, Canal, Parliament, Glebe, ByWard Market and all that downtown Ottawa has to offer.

PROPERTY HIGHLIGHTS

- MS 1 H(30) Zoning
- 200 AMP, Single-Phase Power
- Individual meters
- Pylon signage opportunity

JOHN ZINATI
+1(613)880.4106

john@zinatirealty.com

TANYA WOLFGRAM
+1(613)447.2205

tanya@zinatirealty.com

92 CENTREPOINTE DRIVE • OTTAWA, ON K2G 6B1 • 613.853.4106 • ZINATIREALTY.COM



AVAILABLE SPACES

| SUITE | TENANT | SIZE (SF) | LEASE TYPE | LEASE RATE |
|---|-----------|-----------|------------|---------------|
| Lower Level | Available | 6,000 SF | Gross | \$10.00 SF/yr |
| Ground Floor | Available | 6,000 SF | NNN | \$30.00 SF/yr |
| Lower Level & Ground Floor (Contiguous) | Available | 12,000 SF | NNN | \$20.00 SF/yr |
| Second Floor | Available | 6,000 SF | NNN | \$15.00 SF/yr |
| Full Building | Available | 18,000 SF | NNN | \$18.34 SF/yr |

JOHN ZINATI

+1(613)880.4106

john@zinatirealty.com

TANYA WOLFGRAM

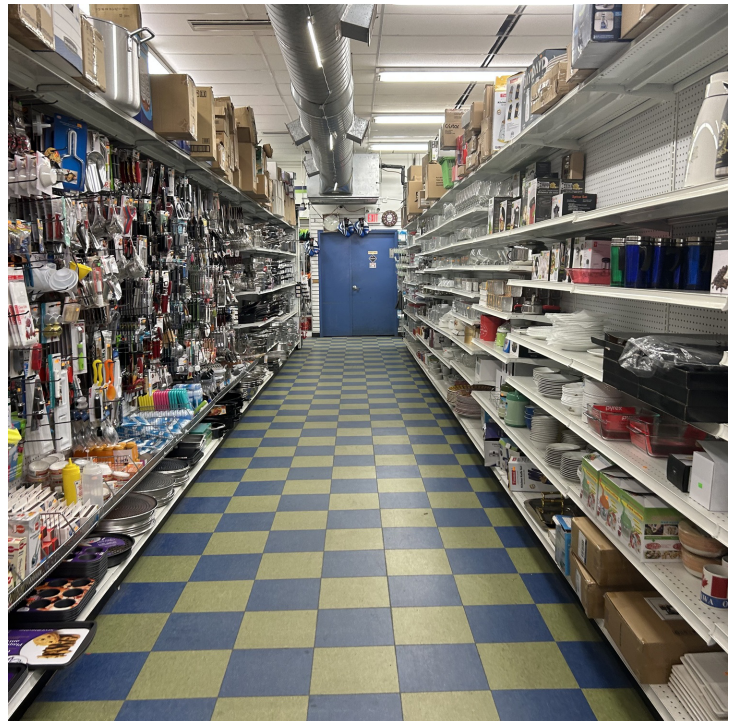
+1(613)447.2205

tanya@zinatirealty.com

92 CENTREPOINTE DRIVE • OTTAWA, ON K2G 6B1 • 613.853.4106 • ZINATIREALTY.COM

GROUND FLOOR - 299 BANK STREET OTTAWA, ON K2P 0J9

Additional Photos



JOHN ZINATI
+1(613)880.4106

john@zinatirealty.com

TANYA WOLFGRAM

+1(613)447.2205

tanya@zinatirealty.com

92 CENTREPOINTE DRIVE • OTTAWA, ON K2G 6B1 • 613.853.4106 • ZINATIREALTY.COM

ZINATI
REALTY
COMMERCIAL BROKERAGE

LOWER LEVEL - 299 BANK STREET OTTAWA, ON K2P 0J9

Additional Photos



JOHN ZINATI
+1(613)880.4106

john@zinatirealty.com

TANYA WOLFGRAM
+1(613)447.2205

tanya@zinatirealty.com

92 CENTREPOINTE DRIVE • OTTAWA, ON K2G 6B1 • 613.853.4106 • ZINATIREALTY.COM

ZINATI
REALTY
COMMERCIAL BROKERAGE

SECOND FLOOR - 299 BANK STREET OTTAWA, ON K2P 0J9

Additional Photos



JOHN ZINATI
+1(613)880.4106

john@zinatirealty.com

92 CENTREPOINTE DRIVE • OTTAWA, ON K2G 6B1 • 613.853.4106 • ZINATIREALTY.COM

TANYA WOLFGRAM

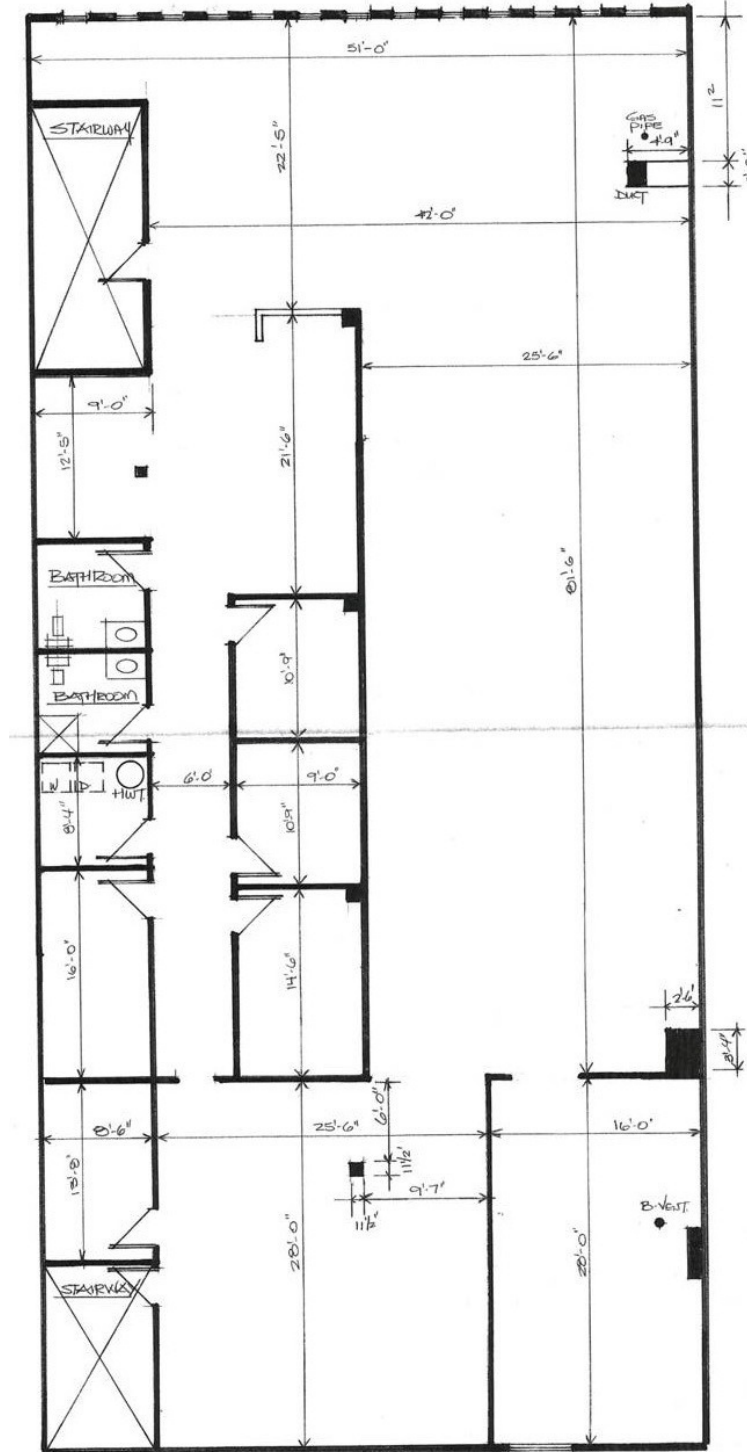
+1(613)447.2205

tanya@zinatirealty.com

ZINATI
REALTY
COMMERCIAL BROKERAGE

SECOND FLOOR - 299 BANK STREET OTTAWA, ON K2P 0J9

Floor Plan



JOHN ZINATI

+1(613)880.4106

john@zinatirealty.com

92 CENTREPOINTE DRIVE • OTTAWA, ON K2G 6B1 • 613.853.4106 • ZINATIREALTY.COM

TANYA WOLFGRAM

+1(613)447.2205

tanya@zinatirealty.com

299 BANK STREET OTTAWA, ON K2P 0J9

Retailer Map



JOHN ZINATI

+1(613)880.4106

john@zinatirealty.com

TANYA WOLFGRAM

+1(613)447.2205

tanya@zinatirealty.com

92 CENTREPOINTE DRIVE • OTTAWA, ON K2G 6B1 • 613.853.4106 • ZINATIREALTY.COM

ZINATI
REALTY
COMMERCIAL BROKERAGE