

MEDICAL SPACE FOR LEASE

2800 Medical Building

2800 Chicago Avenue S., Minneapolis, MN 55407



MEDICAL SPACE FOR LEASE

2800 Medical Building

2800 Chicago Avenue S., Minneapolis, MN 55407

Building Information:

Address	2800 Chicago Avenue, Minneapolis, MN 55407
Total Rentable Square Foot	53,750
Space Available	20,539 rsf
Maximum Contiguous Space	10,831 rsf
Number of Floors	4

Amenities:

- Conveniently located on the Abbott Northwestern and Children's Hospital Campus
- Excellent visibility and easily accessible
- Connected to both hospitals via tunnel
- Ample parking in adjacent ramp
- Referral relationships among peers

Anchor Tenants:

Allina Health

Institute for Low Back and Neck Clinic

Sister Kenny Rehabilitation

Terms and availability subject to change without prior notice.

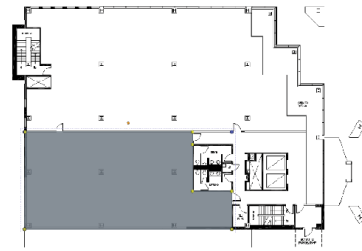
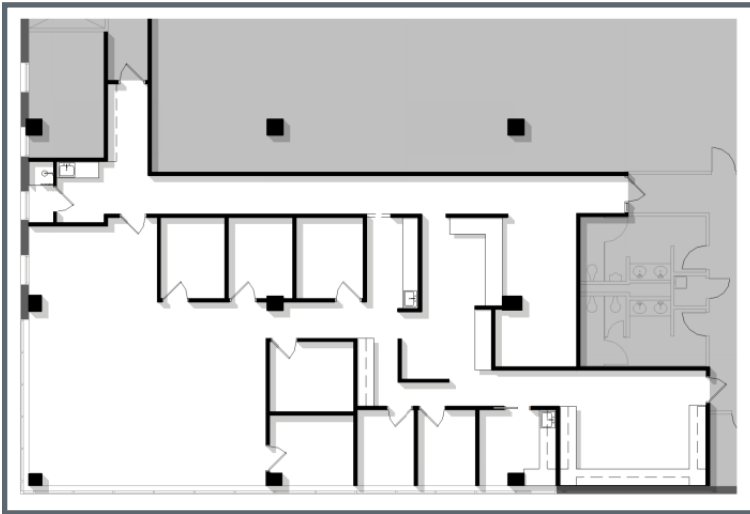
For Leasing Information:

Mike Fleetham | 952-767-2842 | MFleetham@MedCraft.com

Jolene Ludvigsen | 952-838-7126 | JLudvigsen@MedCraft.com

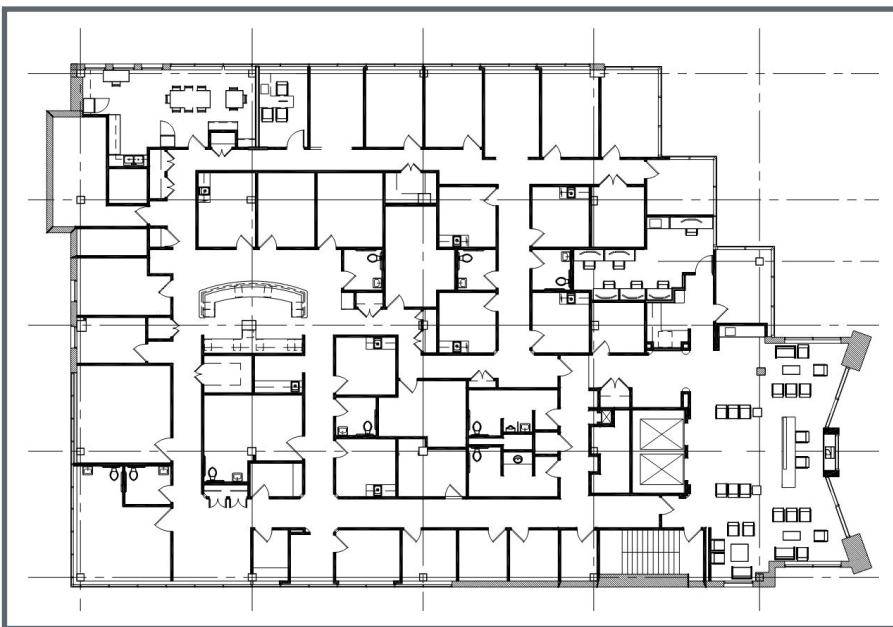


N  **SECOND FLOOR**



AVAILABLE
Suite 200
3,708 SF

N  **THIRD FLOOR**



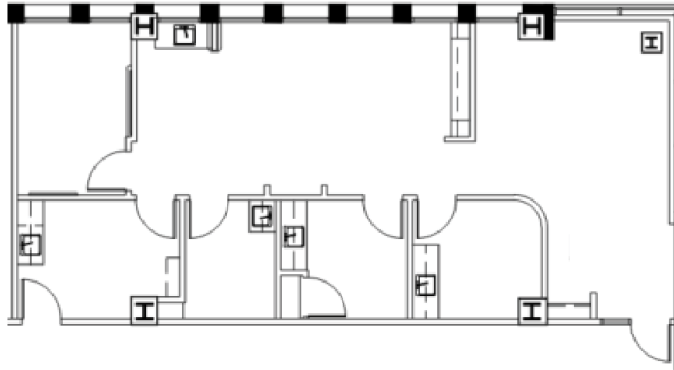
AVAILABLE
Suite 300
10,831 SF

2800 Medical Building

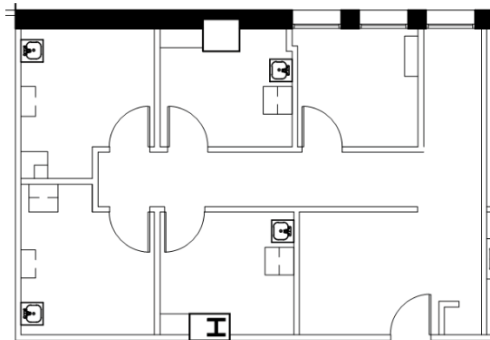
2800 Chicago Avenue S., Minneapolis, MN 55407



N  LOWER LEVEL FLOOR

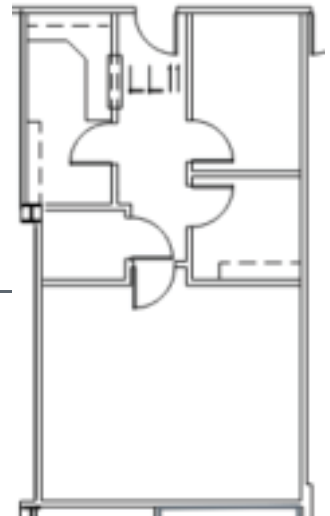


AVAILABLE
Suite LL08
1,376 RSF



AVAILABLE
Suite LL10
914 RSF

AVAILABLE
Suite LL11
810 RSF



For Leasing Information:

MIKE FLEETHAM

(952) 767-2842

MFleetham@MedCraft.com

JOLENE LUDVIGSEN

(952) 838-7126

JLudvigsen@MedCraft.com



MedCraft

Healthcare Real Estate

medcraft.com