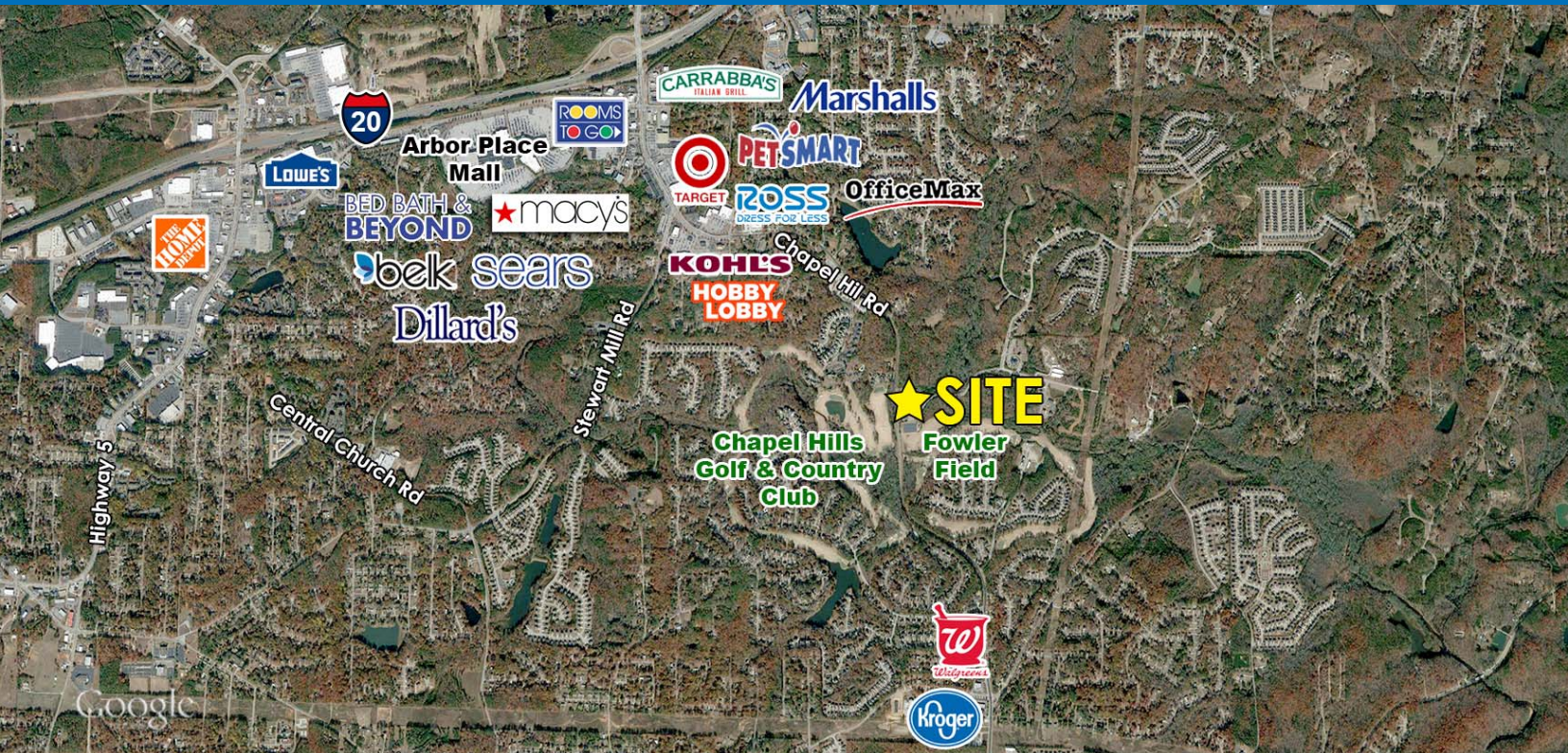


FOR SALE - TRAFFIC LIGHT CORNER - CHAPEL HILL ROAD

# 1.68± ACRES - ZONED COMMERCIAL

CHAPEL HILL RD / BROOKMONT PKWY, DOUGLASVILLE, GA 30135

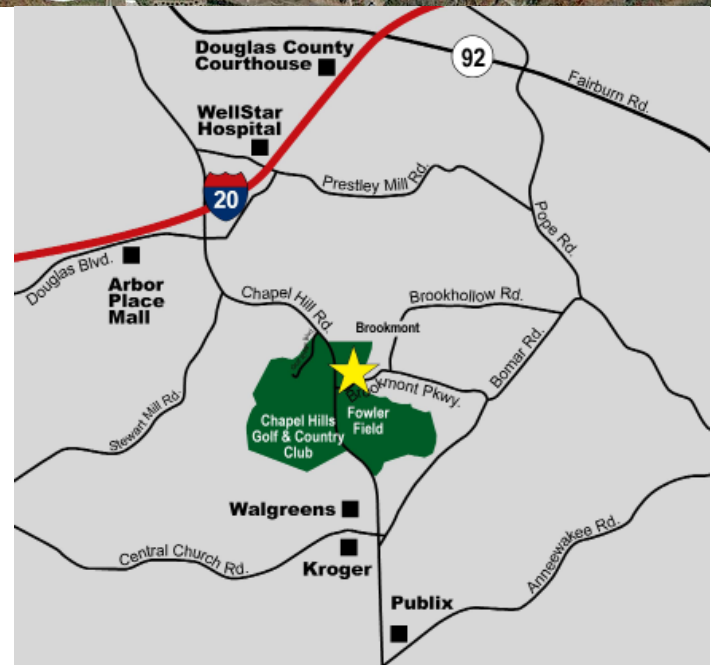


## Property Details

- 1.675 acres available at traffic light intersection
- Zoned CG, Commercial Unincorp. Douglas County
- On-site utilities available
- 20,700 vehicles per day on Chapel Hill Road, north of site  
15,900 vehicles per day on Chapel Hill Road, south of site
- Priced at \$995,000 (\$594,030±/ac)

### Demographics

	1 Mi	3 Mi	5 Mi
2017 Est Population	4,460	42,550	93,231
2017 Est Avg HH Income	\$89,143	\$73,821	\$69,206
2017 Est Med HH Income	\$72,009	\$60,468	\$56,148



Dan Buyers  
770.596.2629  
tdb@mcwrealty.com

Nelson Vinson  
678.385.2718  
nrv@mcwrealty.com

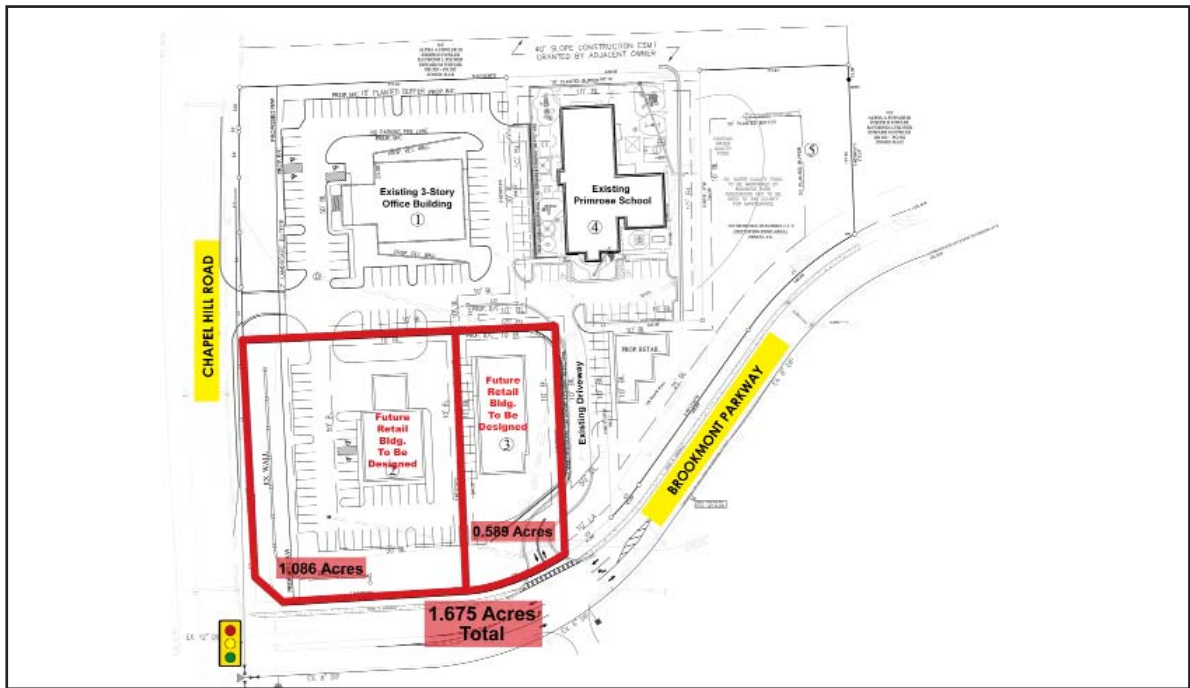
McWhirter Realty Partners, LLC  
300 Galleria Parkway, Suite 300  
Atlanta, GA 30339  
770.955.2000 O | 770.933.2797 F  
www.mcwrealty.com



FOR SALE - TRAFFIC LIGHT CORNER - CHAPEL HILL ROAD

# 1.68± ACRES - ZONED COMMERCIAL

CHAPEL HILL RD / BROOKMONT PKWY, DOUGLASVILLE, GA 30135



*\*All dimensions are approximate.*

Dan Buyers  
770.596.2629  
tdb@mcwrealty.com

Nelson Vinson  
678.385.2718  
nrvm@mcwrealty.com

McWhirter Realty Partners, LLC  
300 Galleria Parkway, Suite 300  
Atlanta, GA 30339  
770.955.2000 O | 770.933.2797 F  
www.mcwrealty.com



No warranty or representation, express or implied, is made as to the accuracy of the information contained herein, and same is subject to errors, omissions, change of price, rental or other conditions, withdrawal without notice, and to any special listing conditions, imposed by our principals.