



WINSTON-TRAITTEL REALTY, INC.

740 Welch Road, Commerce Township, MI 48390



Office Space For Sub-Lease

1942 Star-Batt Drive
Rochester Hills, MI 48309

Mark Lusky
Jeff Raitt

mlusky@wtrealty.com
jraitt@wtrealty.com

Office: 248-624-7200
Fax: 248-624-7239

For More Information Call (248) 624-7200

Information contained herein is subject to verification and no liability for errors or omissions is assumed.
Price is subject to change and listing may be withdrawn without notice.

Summary

Property Address: 1942 Star-Batt Drive Rochester Hills, MI 48309

Cross Streets: North of Crooks & East of M-59

Sub-Lease Expiration: January 31, 2030

Property Type: Office

Zoning: L-1

Year Built: 1979

Building Size: 33,610 square feet

Available Suite: 2,500 square feet

Lease Rate: \$11.00 per square foot + Utilities

Parking: Shared

Utilities: City Water & Sanitary Sewer

Located near many restaurants with great freeway access.

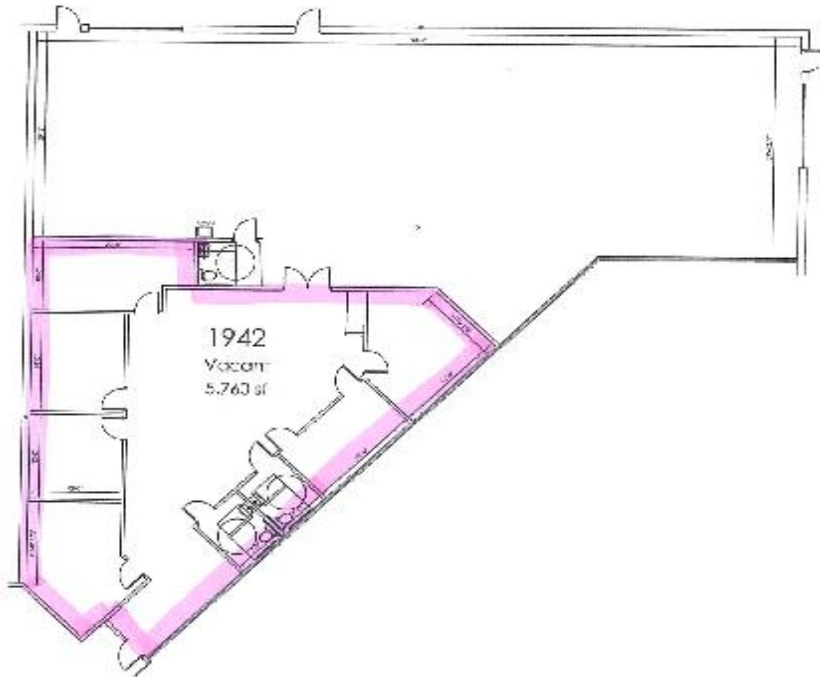


WINSTON-TRAITTEL REALTY, INC.

740 Welch Road, Commerce Township, MI 48390

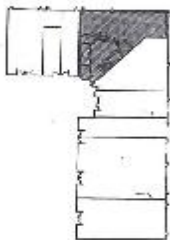
Information contained herein is subject to verification and no liability for errors or omissions is assumed.
Price is subject to change and listing may be withdrawn without notice.

Floor Plan



1942 Star-Batt Drive

SCALE: NONE



BUILDING KEY

SCALE: NO SCALE

RH Office Park

1942 STAR-BATT DRIVE
ROCHESTER HILLS, MI 48309

USABLE AREA: 5,760 SF*

RENTABLE AREA: 5,760 SF*

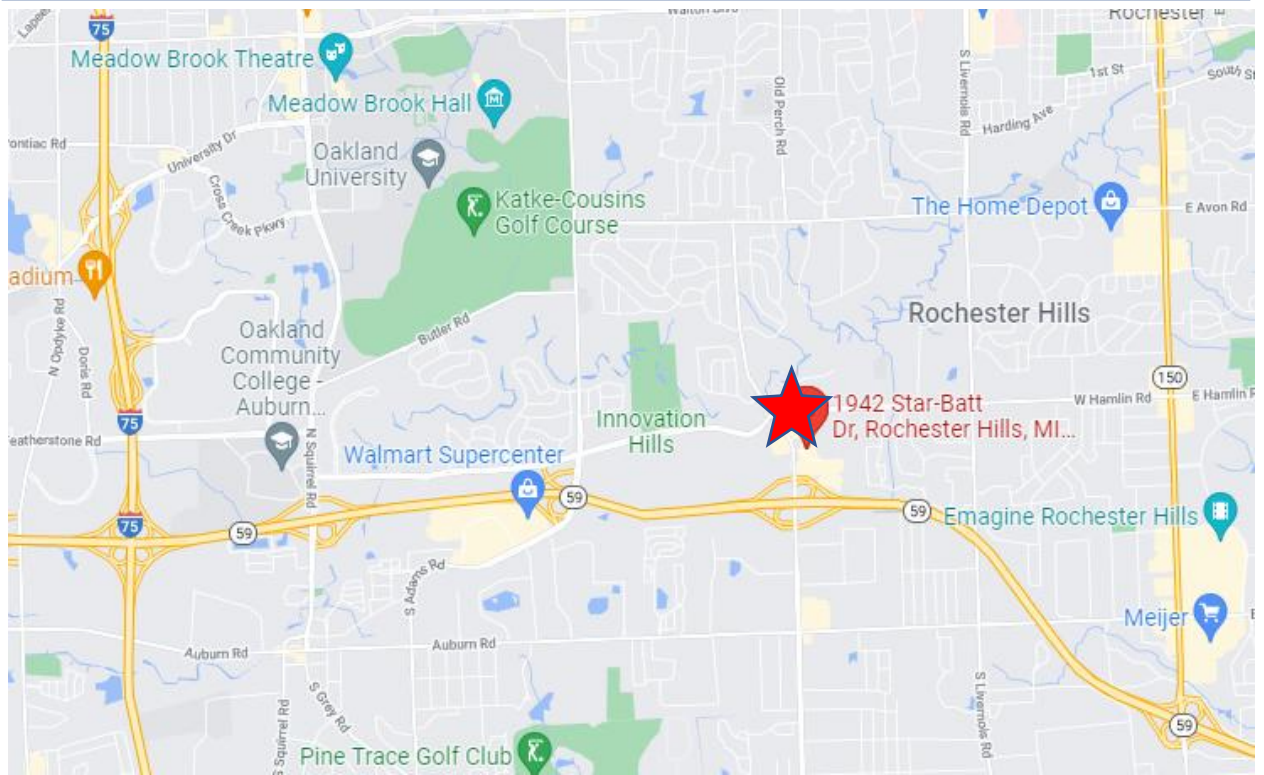
* Square feet measurements subject to change upon site measure



WINSTON-TRAITTEL REALTY, INC.
740 Welch Road, Commerce Township, MI 48390

Information contained herein is subject to verification and no liability for errors or omissions is assumed.
Price is subject to change and listing may be withdrawn without notice.

Map / Aerial



WINSTON-TRAITEL REALTY, INC.
740 Welch Road, Commerce Township, MI 48390

Information contained herein is subject to verification and no liability for errors or omissions is assumed.
Price is subject to change and listing may be withdrawn without notice.