

# 1000 & 1100 EAST WARRENVILLE ROAD

Naperville, IL 60563

## Office For Lease

9,366 - 74,685 SF



Leasing Information:  
312.345.8780

**Matthew Hickey**   **Brett Ratay**  
312.345.8782   847.490.5350  
mhickey@lpc.com   bratay@lpc.com

# Lincoln

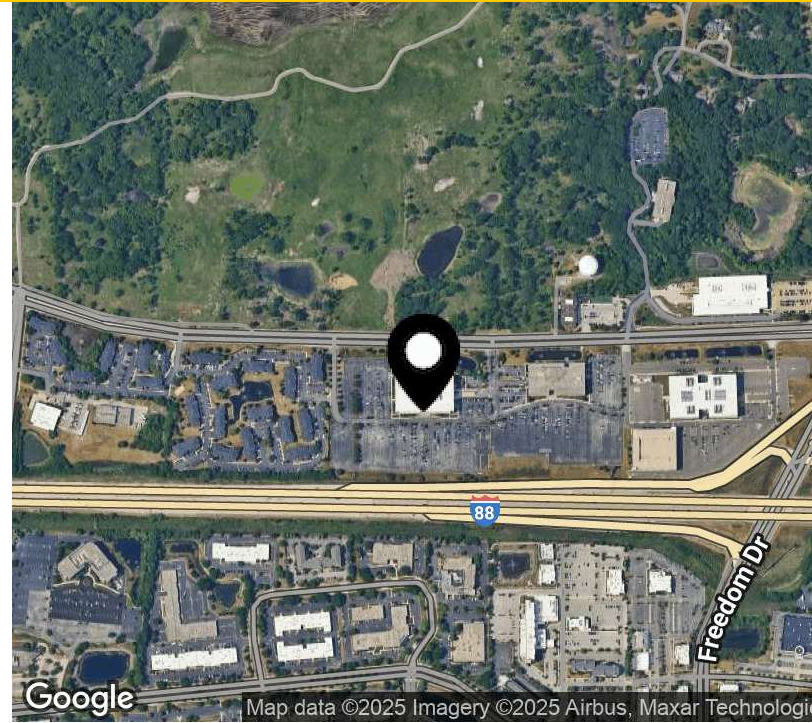
Lincoln Property Company  
120 North LaSalle Street Suite 2900  
Chicago, IL 60602

[www.lpc.com](http://www.lpc.com)

# 1000 & 1100 EAST WARRENVILLE ROAD

Office For Lease

Naperville, IL 60563



## Property Highlights

- Over 200,000 SF of contiguous space available
- Large efficient floor plates up to 75,000 SF
- Full suite amenities including food service, tenant lounge, atrium lobbies, fitness center, conferencing and 5/1000 parking
- I-88 Frontage with excellent branding and signage opportunities
- Abundant area amenities with nearby Freedom Commons

## Property Overview

Naperville Woods' combination of large floor plates, tollway visibility, full suites of amenities and A+ location offers the best workplace solution for large users in the market.

Availabilities	SF	Lease Rate	Date Available
1000 E Warrenville - Suite 230	15,352 SF	Negotiable	Available Now
1000 E Warrenville - Suite 300	39,635 SF	Negotiable	Available Now
1000 E Warrenville - Suite 400	74,685 SF	Negotiable	Available Now
1100 E Warrenville - Suite 120	9,366 SF	Negotiable	Available Now
1100 E Warrenville - Suite 150	14,100 SF	Negotiable	Available Now
1100 E Warrenville - Suite 200	59,528 SF	Negotiable	Available Now
1100 E Warrenville - Suite 300	59,529 SF	Negotiable	Available Now
1100 E Warrenville - Suite 400	33,717 SF	Negotiable	Available Now
1100 E Warrenville - Suite 450	25,793 SF	Negotiable	Available Now

**Matthew Hickey**

312.345.8782  
mhickey@lpc.com

**Brett Ratay**

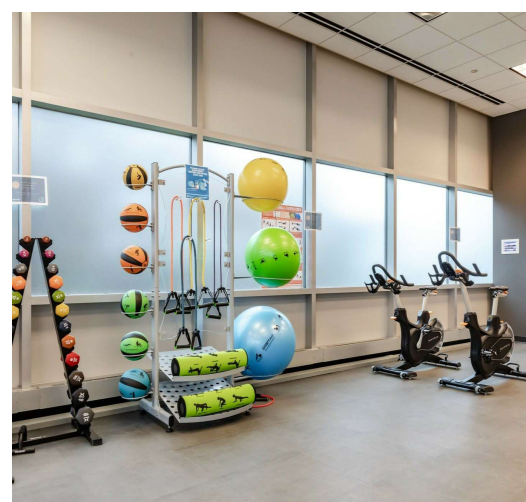
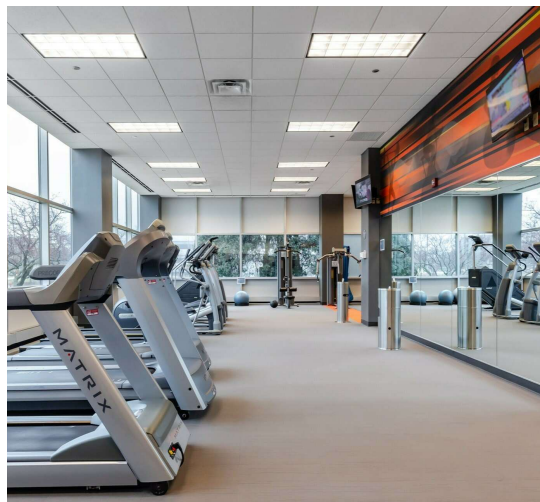
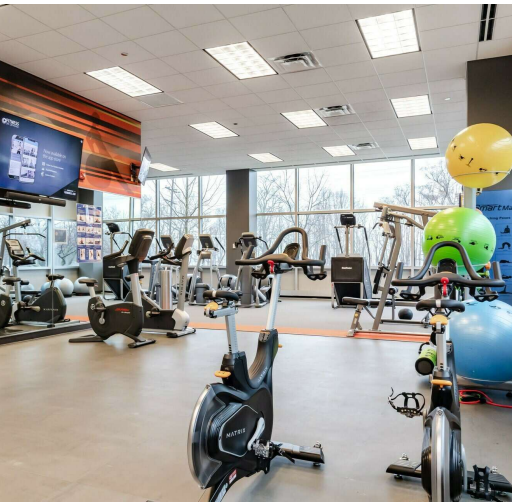
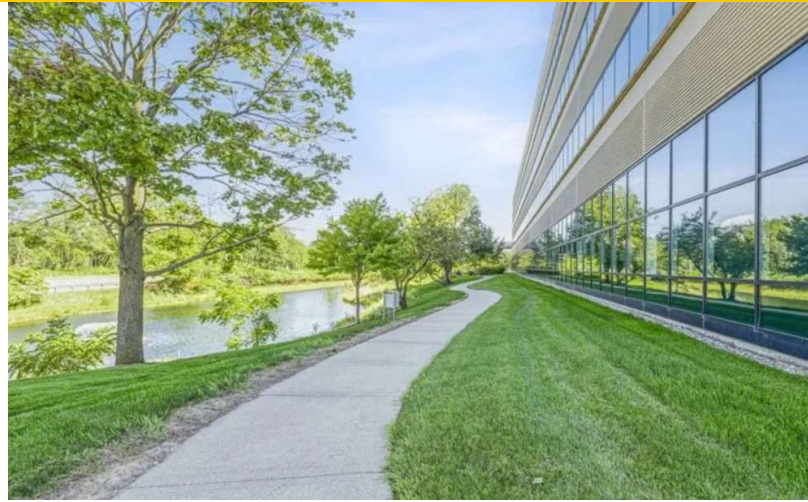
847.490.5350  
bratay@lpc.com

**Lincoln**

# 1000 & 1100 EAST WARRENVILLE ROAD

Additional Photos

Naperville, IL 60563



**Matthew Hickey**

312.345.8782  
mhickey@lpc.com

**Brett Ratay**

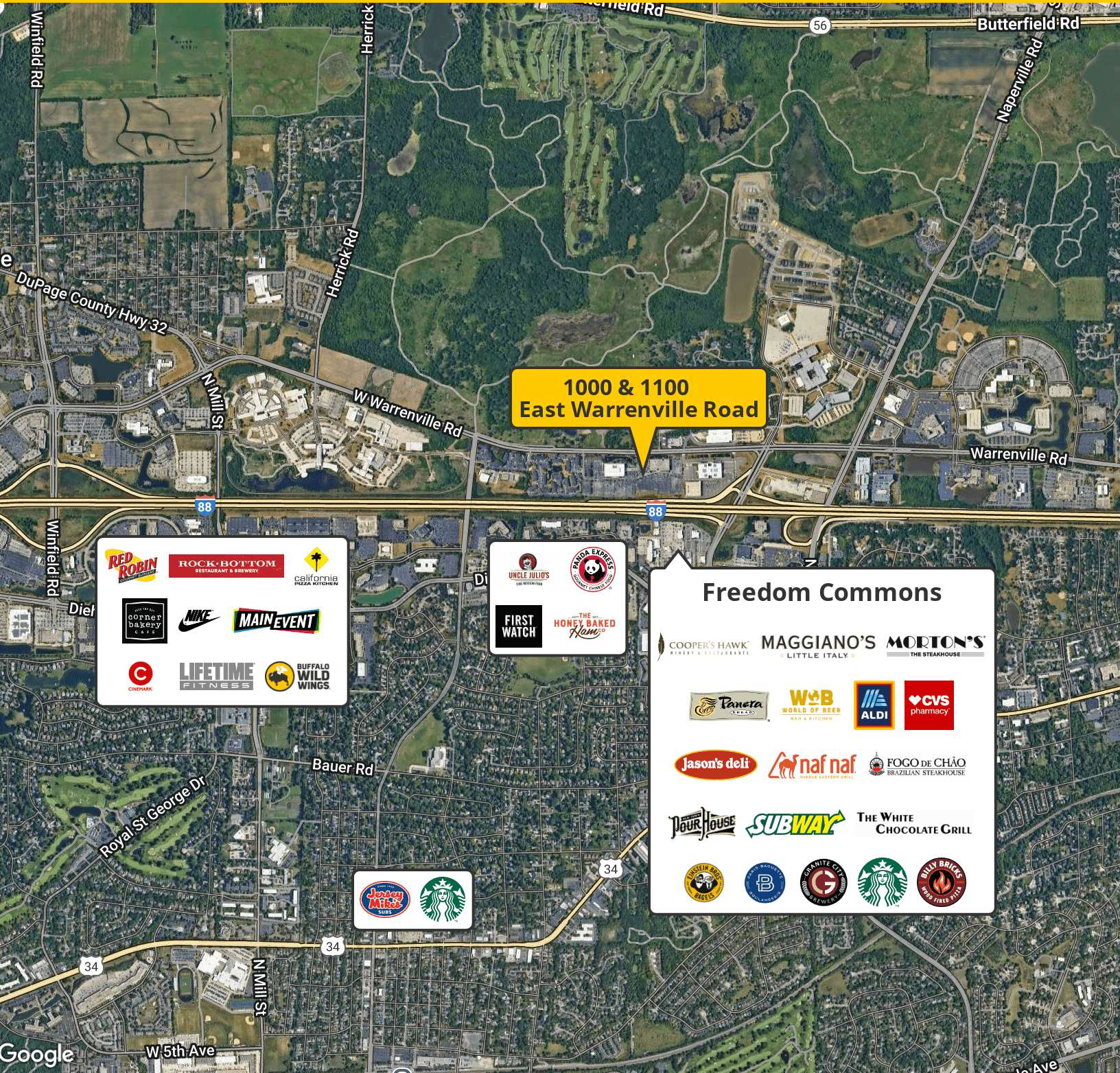
847.490.5350  
bratay@lpc.com

**Lincoln**

# 1000 & 1100 EAST WARRENVILLE ROAD

## Location Map

Naperville, IL 60563



1000 & 1100  
East Warrenville Road

RED ROBIN  
ROCK BOTTOM RESTAURANT & BREWERY  
california PIZZA KITCHEN  
corner bakery CAFE  
NIKE  
MAIN EVENT  
CINEMARK  
LIFETIME FITNESS  
BUFFALO WILD WINGS

UNCLE JULIUS  
PANDA EXPRESS  
FIRST WATCH  
THE HONEY BAKED Ham

**Freedom Commons**

COOPER'S HAWK  
MAGGIANO'S LITTLE ITALY  
MORTON'S THE STEAKHOUSE  
Panera  
WOB WORLD OF BEER  
ALDI  
CVS pharmacy  
Jason's deli  
naf naf  
FOGO DE CHÃO BRAZILIAN STEAKHOUSE  
POUR HOUSE  
SUBWAY  
THE WHITE CHOCOLATE GRILL  
FUSION BREAD BAKERS  
B  
GRANITE CITY BREWERY  
Starbucks  
BILLY BRICKS

Jersey Mike's  
Starbucks

Matthew Hickey Brett Ratay  
312.345.8782 847.490.5350  
mhickey@lpc.com bratay@lpc.com

Lincoln



# 1000 & 1100 EAST WARRENVILLE ROAD

Naperville, IL 60563

Leasing Information:  
312.345.8780

**Matthew Hickey**  
312.345.8782  
mhickey@lpc.com

**Brett Ratay**  
847.490.5350  
bratay@lpc.com

## Lincoln

Lincoln Property Company  
120 North LaSalle Street Suite 2900  
Chicago, IL 60602

[www.lpc.com](http://www.lpc.com)