

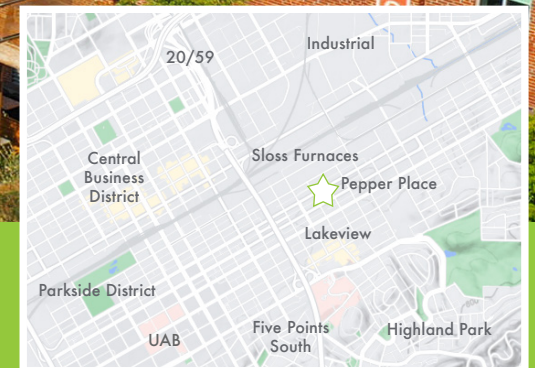


SLOSS
REAL ESTATE

FOR LEASE

MARTIN BISCUIT BUILDING

2901 2ND AVENUE SOUTH, SUITE 210, BIRMINGHAM, AL 35233



Lochrane Chase

Director of Leasing and Business Development
205.218.0542
lchase@slossrealestate.com

slossrealestate.com



RENDERING

FOR LEASE: MARTIN BISCUIT BUILDING

2901 2ND AVENUE SOUTH, SUITE 210, BIRMINGHAM, AL 35233



Lochrane Chase

Director of Leasing and Business Development

205.218.0542

lchase@slossrealestate.com

slossrealestate.com



AVAILABLE SPACE

FOR LEASE: MARTIN BISCUIT BUILDING

2901 2ND AVENUE SOUTH, SUITE 210, BIRMINGHAM, AL 35233

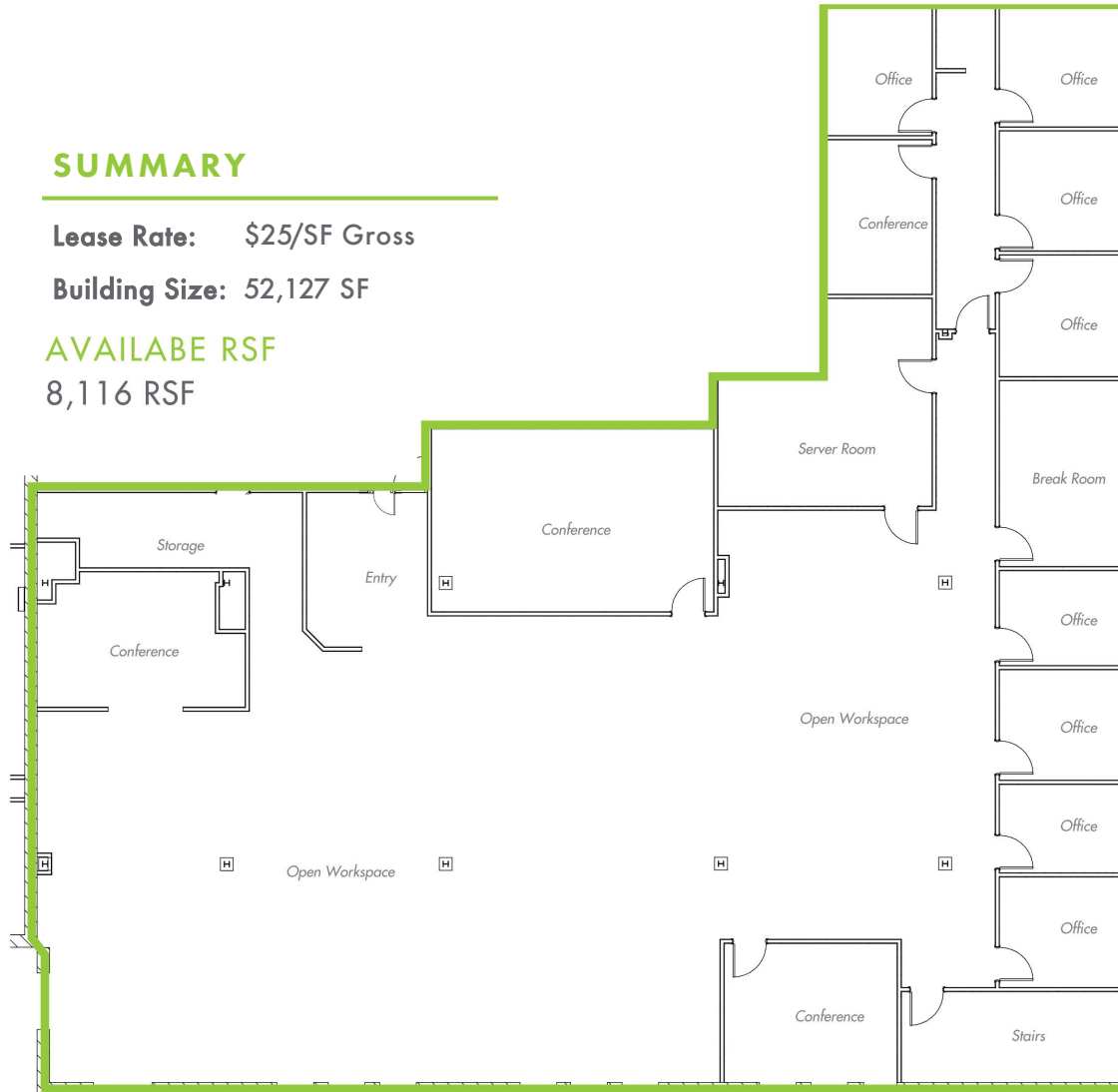
SUMMARY

Lease Rate: \$25/SF Gross

Building Size: 52,127 SF

AVAILABLE RSF

8,116 RSF



Lochrane Chase

Director of Leasing and Business Development

205.218.0542

lchase@slossrealestate.com

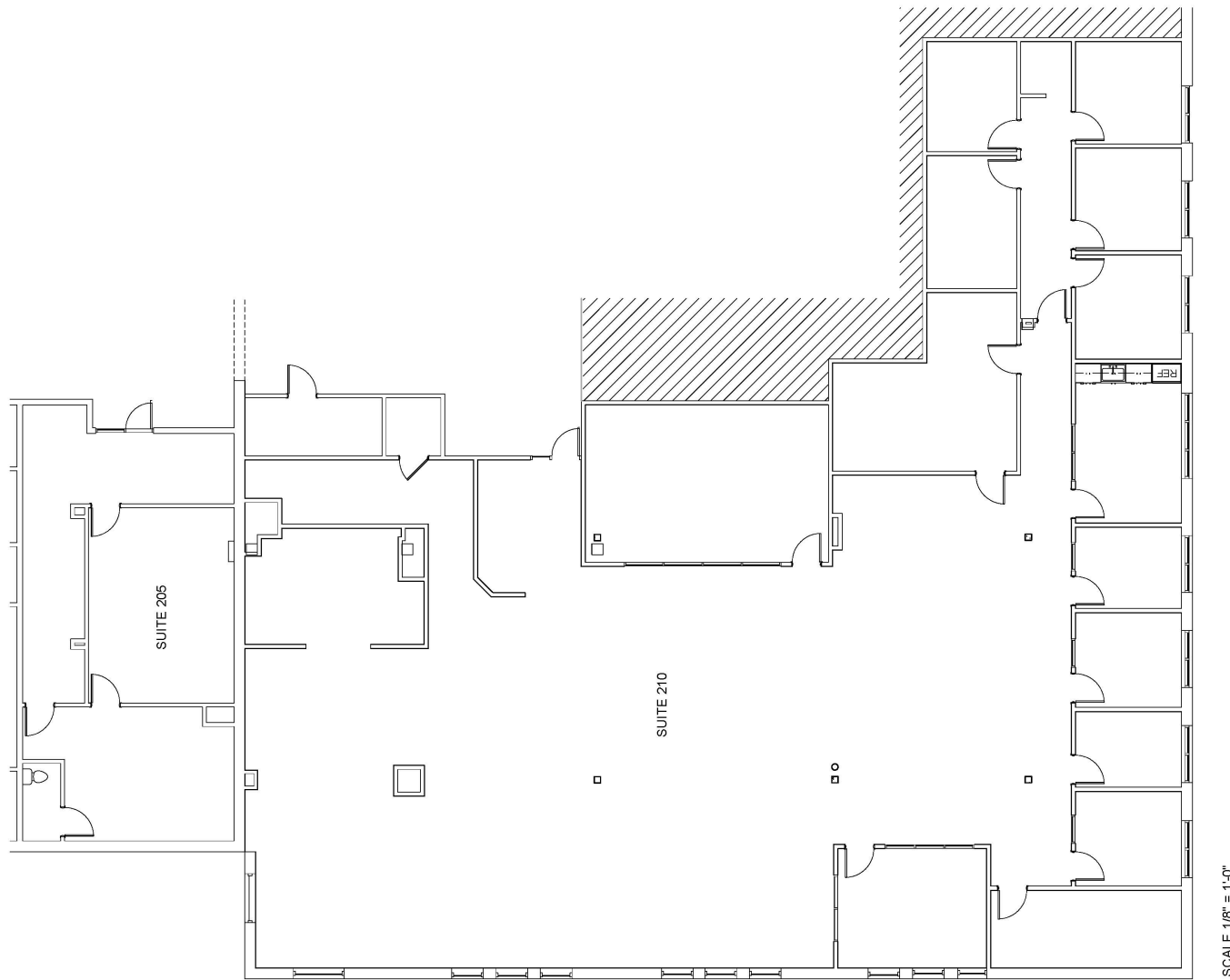
slossrealestate.com



AVAILABLE SPACE

FOR LEASE: MARTIN BISCUIT BUILDING

2901 2ND AVENUE SOUTH, SUITE 210, BIRMINGHAM, AL 35233



Lochrane Chase

Director of Leasing and Business Development

205.218.0542

lchase@slossrealestate.com

slossrealestate.com



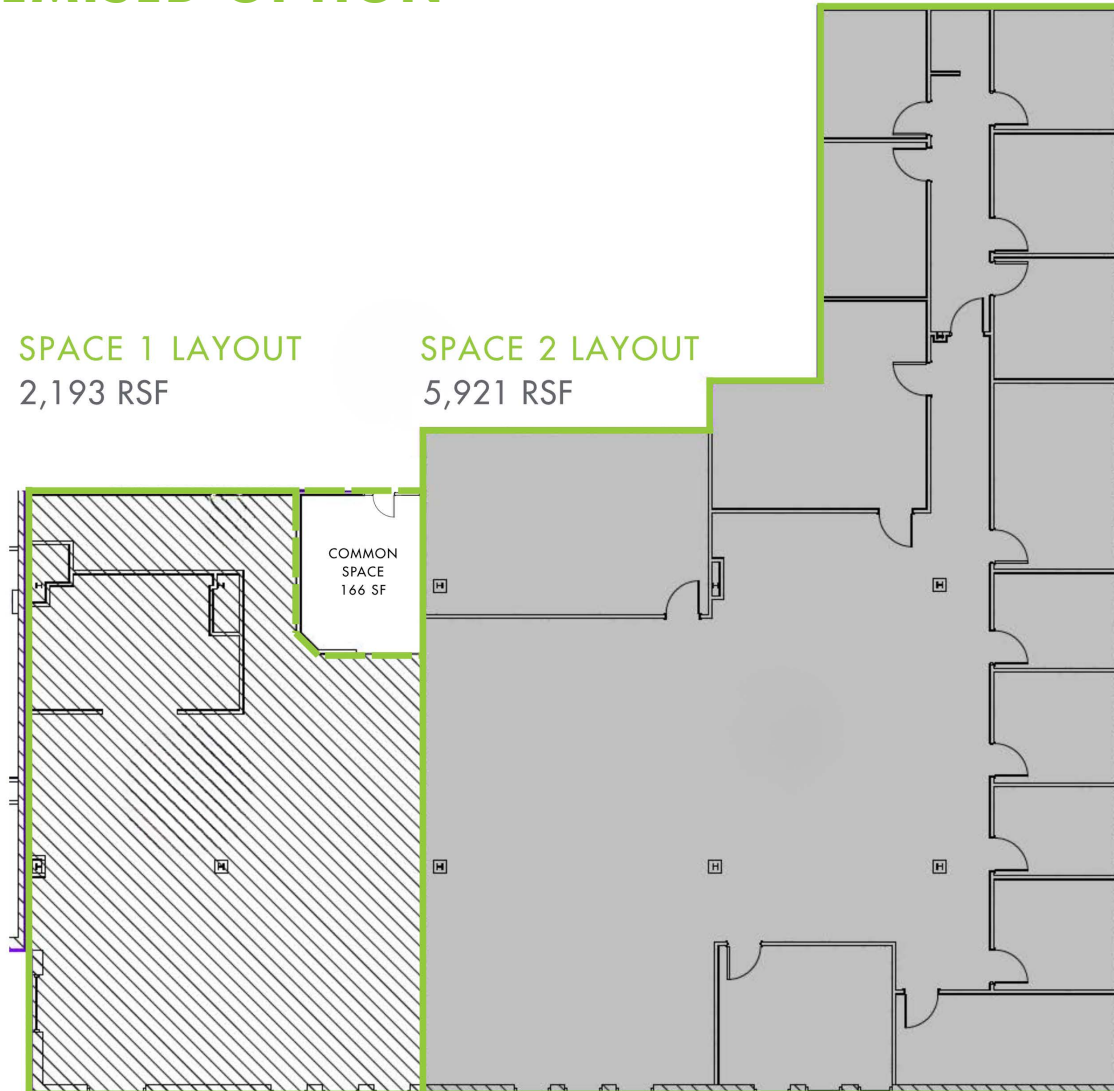
AVAILABLE SPACE DEMISED OPTION

FOR LEASE: MARTIN BISCUIT BUILDING

2901 2ND AVENUE SOUTH, SUITE 210, BIRMINGHAM, AL 35233

SPACE 1 LAYOUT
2,193 RSF

SPACE 2 LAYOUT
5,921 RSF



Lochrane Chase

Director of Leasing and Business Development
205.218.0542
lchase@slossrealestate.com

slossrealestate.com



NEIGHBORHOOD AERIAL

FOR LEASE: MARTIN BISCUIT BUILDING

2901 2ND AVENUE SOUTH, SUITE 210, BIRMINGHAM, AL 35233



Lochrane Chase

Director of Leasing and Business Development
205.218.0542
lchase@slossrealestate.com

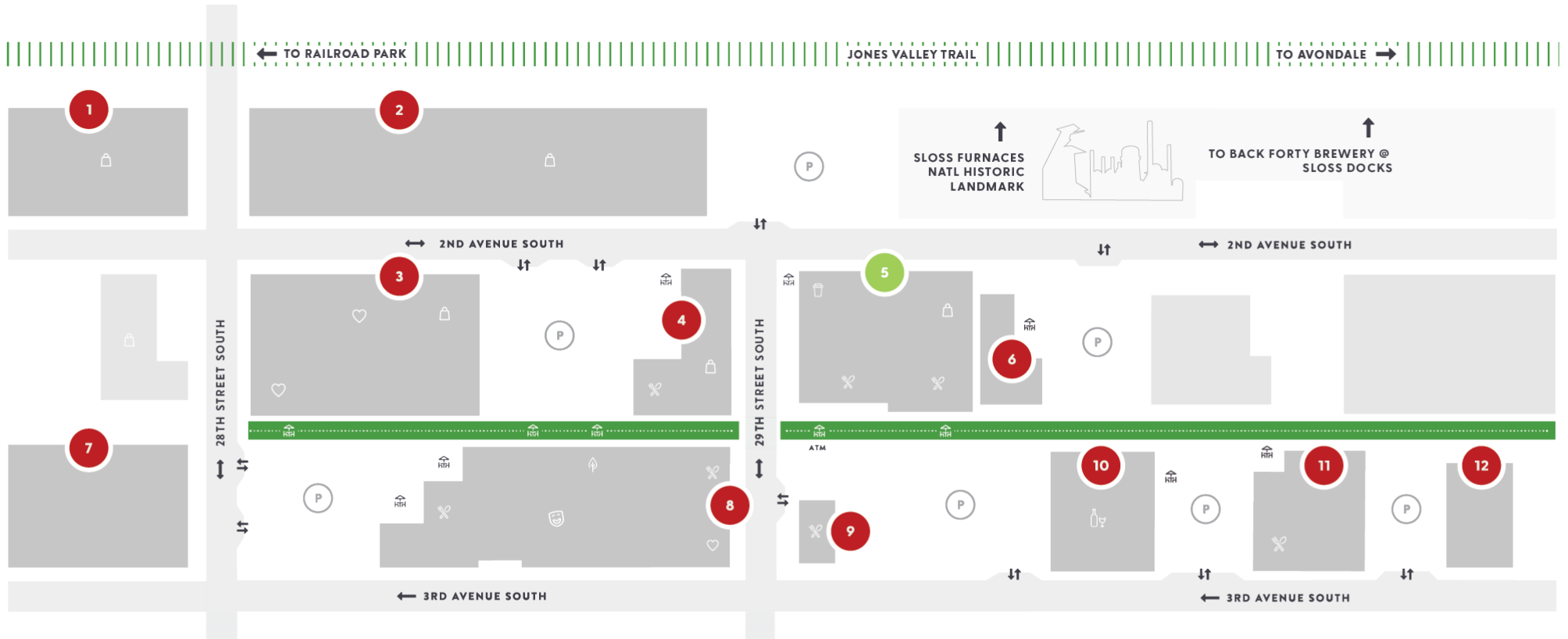
slossrealestate.com



PEPPER PLACE OVERVIEW

FOR LEASE: MARTIN BISCUIT BUILDING

2901 2ND AVENUE SOUTH, SUITE 210, BIRMINGHAM, AL 35233



- FREE PARKING
- FOOD & DRINK
- HEALTH & WELLNESS
- THEATRE
- COFFEE
- SHOPS & SERVICES
- HOME & GARDEN
- WINE & SPIRITS
- PEDESTRIAN ALLEY-WAY

- 1 2700 BLDG
- 2 FERGUSON SHOWROOMS
- 3 SENSABAUGH BLDG
- 4 DR PEPPER BLDG
- 5 MARTIN BISCUIT BLDG
- 6 MARTIN BISCUIT ANNEX
- 7 EPIC BLDG
- 8 THE STUDIOS AT PEPPER PLACE
- 9 JENI'S ICE CREAM
- 10 HOP CITY BLDG
- 11 BLUEPRINT ON 3RD
- 12 3022 BLDG

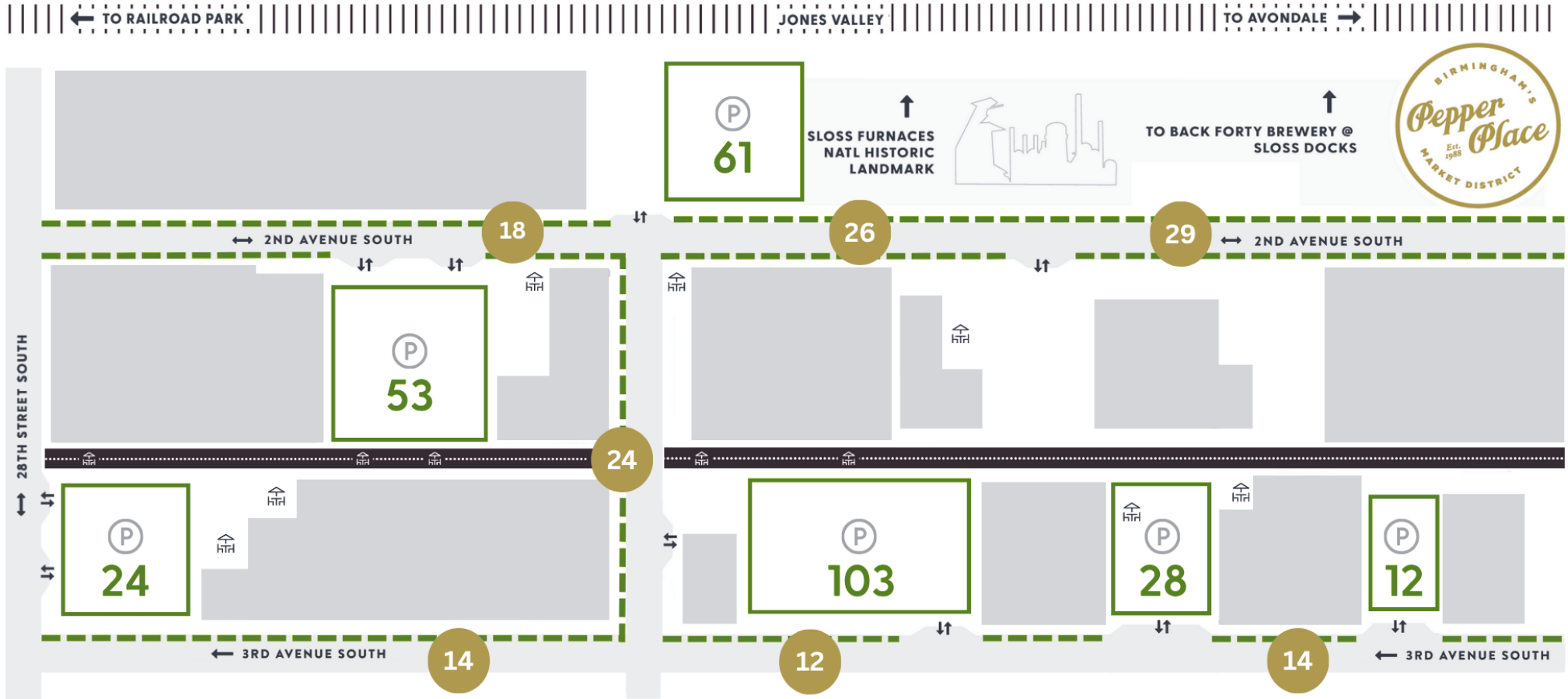
Lochrane Chase

Director of Leasing and Business Development
 205.218.0542
 lchase@slossrealestate.com

slossrealestate.com



PEPPER PLACE PARKING



*418 TOTAL PARKING SPACES

--- 137 STREET PARKING SPACES

(P) FREE PARKING

HTH PATIO AREA

..... PEDESTRIAN ALLEY-WAY

Lochrane Chase

Director of Leasing and Business Development
205.218.0542
lchase@slossrealestate.com

slossrealestate.com