

**CEDAR SQUARE SHOPPING CENTER**  
2087 ROUTE 9 SOUTH, OCEAN VIEW, NJ 08230

**CEDAR SQUARE SHOPPING CENTER**

**SEEKING**

**RESTAURANTS, HAIR SALON, MEDICAL, FITNESS AND PET RETAILERS**



**OFFERING SUMMARY**

Available SF: 1,200 - 42,000 SF

Lease Rate: Call For Details

**NEIGHBORING TENANTS**



**PROPERTY OVERVIEW**

Cedar Square Shopping Center - Jr. Anchor Space Available | 22,673 SF

**PROPERTY HIGHLIGHTS**

- Jr. Anchor Space Available | 22,673 SF
- 146,500 SF Neighborhood Center
- Prime Retail Site Available Immediately: 1,200 - 42,000 SF
- 2 Out parcels
- Signalized Location at Route 9 & Route 50
- Convenient Access to Route 50 and Garden State Parkway
- Newly Opened Tenants – Dog Days Grooming, VIM Thrift Store, Seaville Pizza/Italian Restaurant

FOR MORE INFORMATION CONTACT:

**JOHN T. OSTROWSKI**  
201.703.9700 x121  
jostrowski@thegoldsteingroup.com

**CEDAR SQUARE SHOPPING CENTER**  
2087 ROUTE 9 SOUTH, OCEAN VIEW, NJ 08230

Space	NORTH BUILDING	SF
C-1a	AVAILABLE	3,133
C-1b	<b>ROTO-ROOTER</b> PLUMBING & WATER CLEANUP	867
C-2	AVAILABLE	1,600
C-3	Restaurant Space - AVAILABLE	2,400
C-4	<b>H&amp;R BLOCK</b>	800
C-5	<b>LabCorp</b>	1,600
C-6	<b>Pretty NAILS</b>	800
C-7	<b>DOG DAYS GROOMING</b>	800

Space	Pad-Sites	SF
D-1	AVAILABLE	2,500
D-2	AVAILABLE	2,000
F-1	<b>CAPE REGIONAL MEDICAL CENTER</b>	6,800
G-1	<b>McDonald's</b>	3,900



Space	EAST BUILDING	SF
B-1	AVAILABLE	6,400
B-2	AVAILABLE	12,606
B-3	AVAILABLE	22,673
B-4	<b>DOLLAR GENERAL</b>	7,200
A-1	<b>ACME</b>	

Space	SOUTH BUILDING	SF
E-1	AVAILABLE	1,200
E-2	Medical Space - AVAILABLE	2,400
E-3	Seaville Pizza	2,700
E-4	VIM Thrift Store	2,220
E-5		1,200
E-6		1,200
E-7	Maple Tree Gifts	1,200
E-8	Maple Tree STUDIO	1,200

**CEDAR SQUARE SHOPPING CENTER**

FOR MORE INFORMATION CONTACT:

**JOHN T. OSTROWSKI**  
201.703.9700 x121  
jostrowski@thegoldsteingroup.com

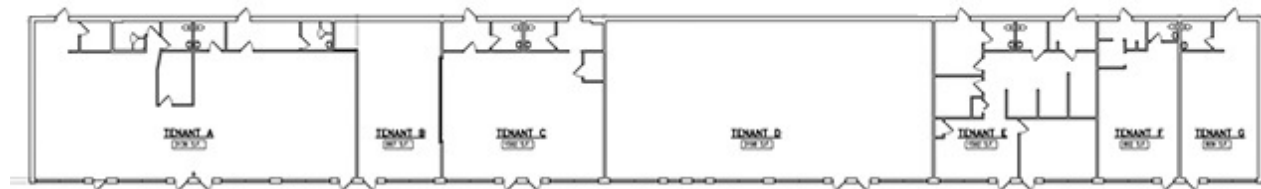
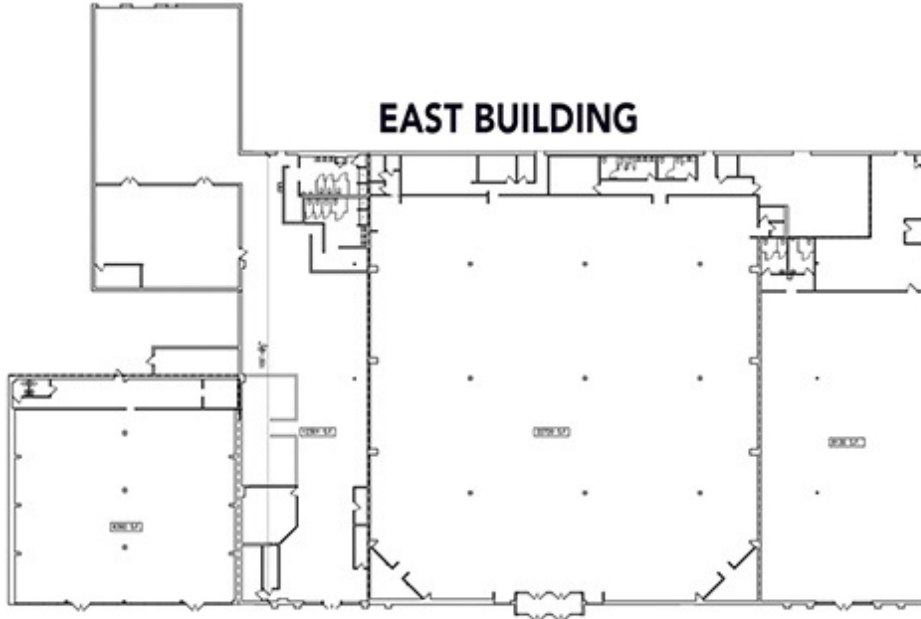
Licensed Real Estate Broker | 123 W MOUNT PLEASANT AVENUE | SUITE 200 | LIVINGSTON, NJ 07039

THEGOLDSTEINGROUP.COM

All information is from sources deemed reliable and is submitted subject to errors, omissions, change of price, terms, rental, prior sale and withdrawal without notice.

**CEDAR SQUARE SHOPPING CENTER**

2087 ROUTE 9 SOUTH, OCEAN VIEW, NJ 08230



FOR MORE INFORMATION CONTACT:

**JOHN T. OSTROWSKI**

201.703.9700 x121

jostrowski@thegoldsteingroup.com

Licensed Real Estate Broker | 123 W MOUNT PLEASANT AVENUE | SUITE 200 | LIVINGSTON, NJ 07039

[THEGOLDSTEINGROUP.COM](http://THEGOLDSTEINGROUP.COM)

All information is from sources deemed reliable and is submitted subject to errors, omissions, change of price, terms, rental, prior sale and withdrawal without notice.

**CEDAR SQUARE SHOPPING CENTER**

2087 ROUTE 9 SOUTH, OCEAN VIEW, NJ 08230



FOR MORE INFORMATION CONTACT:

**JOHN T. OSTROWSKI**

201.703.9700 x121

jostrowski@thegoldsteingroup.com

Licensed Real Estate Broker | 123 W MOUNT PLEASANT AVENUE | SUITE 200 | LIVINGSTON, NJ 07039

[THEGOLDSTEINGROUP.COM](http://THEGOLDSTEINGROUP.COM)

All information is from sources deemed reliable and is submitted subject to errors, omissions, change of price, terms, rental, prior sale and withdrawal without notice.

**CEDAR SQUARE SHOPPING CENTER**  
 2087 ROUTE 9 SOUTH, OCEAN VIEW, NJ 08230



FOR MORE INFORMATION CONTACT:

**JOHN T. OSTROWSKI**  
 201.703.9700 x121  
 jostrowski@thegoldsteingroup.com

Licensed Real Estate Broker | 123 W MOUNT PLEASANT AVENUE | SUITE 200 | LIVINGSTON, NJ 07039

THEGOLDSTEINGROUP.COM

All information is from sources deemed reliable and is submitted subject to errors, omissions, change of price, terms, rental, prior sale and withdrawal without notice.

**CEDAR SQUARE SHOPPING CENTER**

2087 ROUTE 9 SOUTH, OCEAN VIEW, NJ 08230



FOR MORE INFORMATION CONTACT:

**JOHN T. OSTROWSKI**

201.703.9700 x121

jostrowski@thegoldsteingroup.com

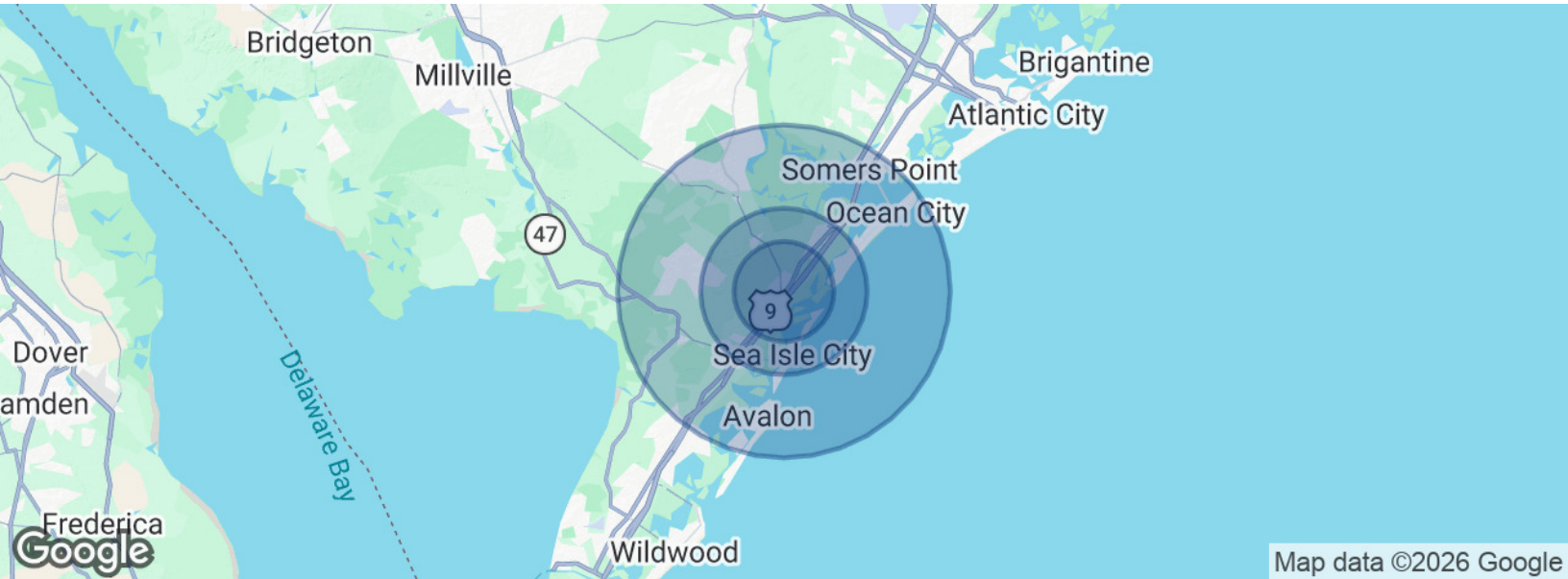
Licensed Real Estate Broker | 123 W MOUNT PLEASANT AVENUE | SUITE 200 | LIVINGSTON, NJ 07039

[THEGOLDSTEINGROUP.COM](http://THEGOLDSTEINGROUP.COM)

All information is from sources deemed reliable and is submitted subject to errors, omissions, change of price, terms, rental, prior sale and withdrawal without notice.

**CEDAR SQUARE SHOPPING CENTER**

2087 ROUTE 9 SOUTH, OCEAN VIEW, NJ 08230



Map data ©2026 Google

<b>POPULATION</b>	<b>3 MILES</b>	<b>5 MILES</b>	<b>10 MILES</b>
Total population	6,696	14,685	48,383
Median age	46.4	47.1	46.2
Median age (Male)	44.6	45.5	44.8
Median age (Female)	48.4	48.7	47.0
<b>HOUSEHOLDS &amp; INCOME</b>	<b>3 MILES</b>	<b>5 MILES</b>	<b>10 MILES</b>
Total households	2,741	6,252	20,711
# of persons per HH	2.4	2.3	2.3
Average HH income	\$94,922	\$90,352	\$86,747
Average house value	\$340,071	\$323,602	\$430,154

\* Demographic data derived from 2020 ACS - US Census

FOR MORE INFORMATION CONTACT:

**JOHN T. OSTROWSKI**

201.703.9700 x121

jostrowski@thegoldsteingroup.com

Licensed Real Estate Broker | 123 W MOUNT PLEASANT AVENUE | SUITE 200 | LIVINGSTON, NJ 07039

THEGOLDSTEINGROUP.COM

All information is from sources deemed reliable and is submitted subject to errors, omissions, change of price, terms, rental, prior sale and withdrawal without notice.