

# FOR LEASE

11,088 SF FLEX SPACE

7400 Whitepine Rd | North Chesterfield, VA 23237



**S.L. NUSBAUM**  
REALTY CO.



## ANDREW BRODIE

Senior Associate

C. 804.759.5970

O. 804.944.9254

abrodie@slnusbaum.com

## TRIB SUTTON

Senior Director

C. 804.337.6525

O. 804.477.8785

tsutton@slnusbaum.com

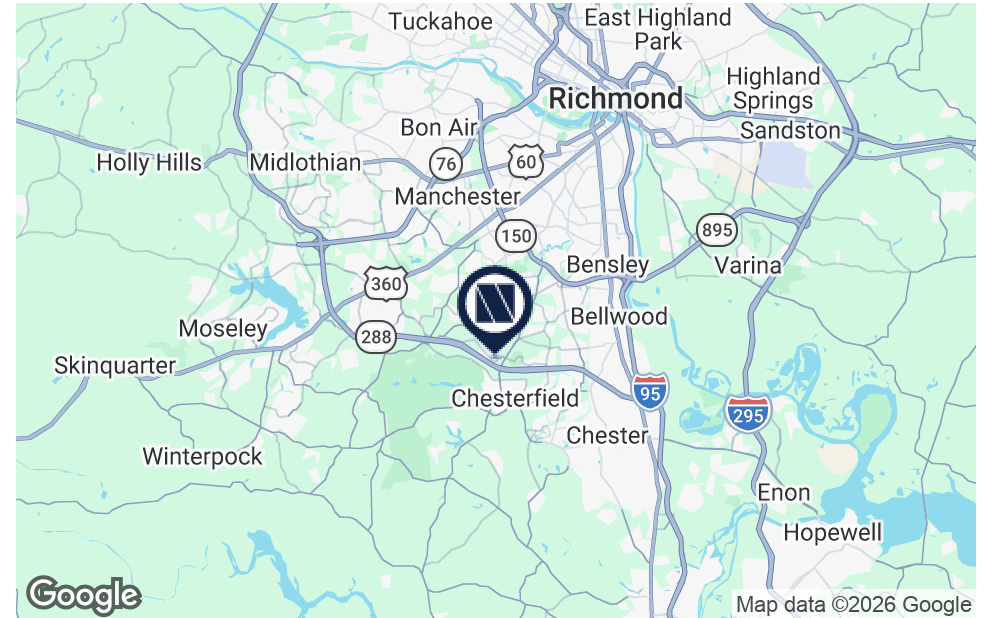
# PROPERTY SUMMARY

11,088 SF FLEX SPACE

7400 Whitepine Rd | North Chesterfield, VA 23237



S.L. NUSBAUM  
REALTY CO.



## OFFERING SUMMARY

Lease Rate:	Contact Agents
Available SF:	11,088 SF
Lot Size:	2.13 Acres
Zoning:	I-1

## PROPERTY OVERVIEW

### Flex Space Available For Lease

## PROPERTY HIGHLIGHTS

- 3 Drive-In Doors
- Ample Parking
- Updated Office Buildout
- 7,000 SF Warehouse
- 4,088 SF Office

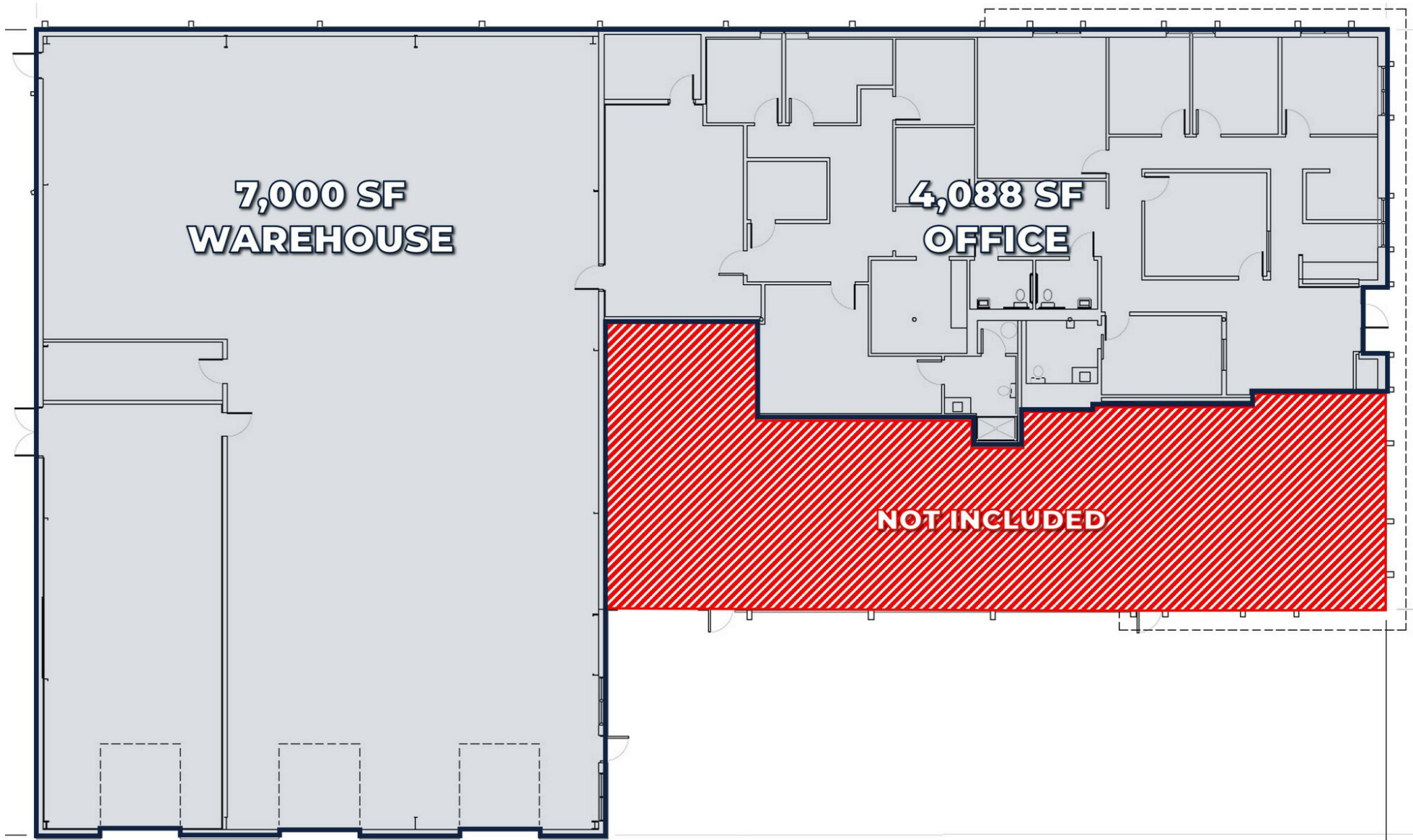
# FLOOR PLAN

11,088 SF FLEX SPACE

7400 Whitepine Rd | North Chesterfield, VA 23237



S.L. NUSBAUM  
REALTY CO.



# OFFICE PHOTOS

11,088 SF FLEX SPACE

7400 Whitepine Rd | North Chesterfield, VA 23237



S.L. NUSBAUM  
REALTY CO.



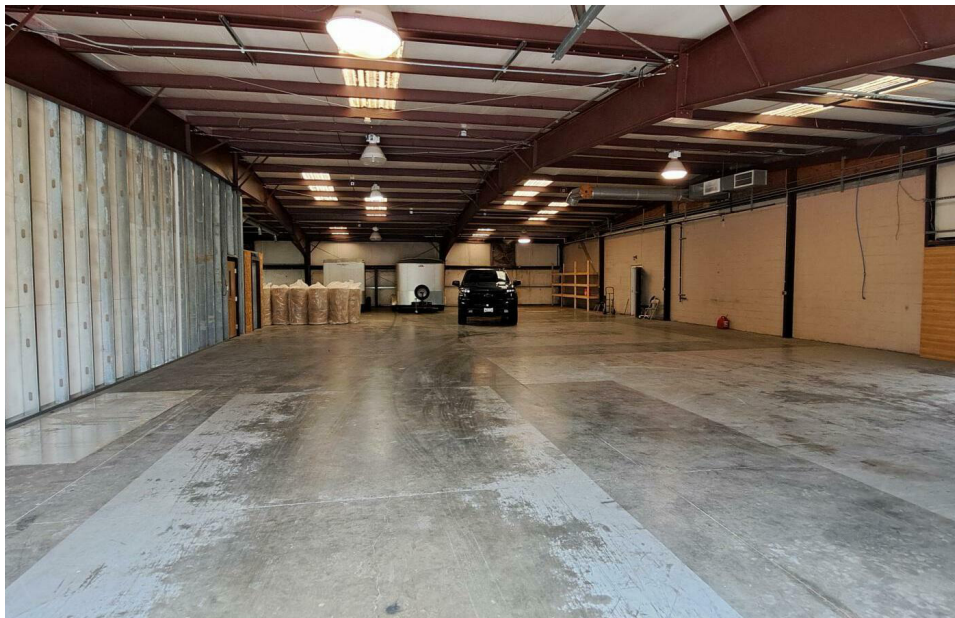
# WAREHOUSE PHOTOS

11,088 SF FLEX SPACE

7400 Whitepine Rd | North Chesterfield, VA 23237



S.L. NUSBAUM  
REALTY CO.



# CONTACT INFORMATION

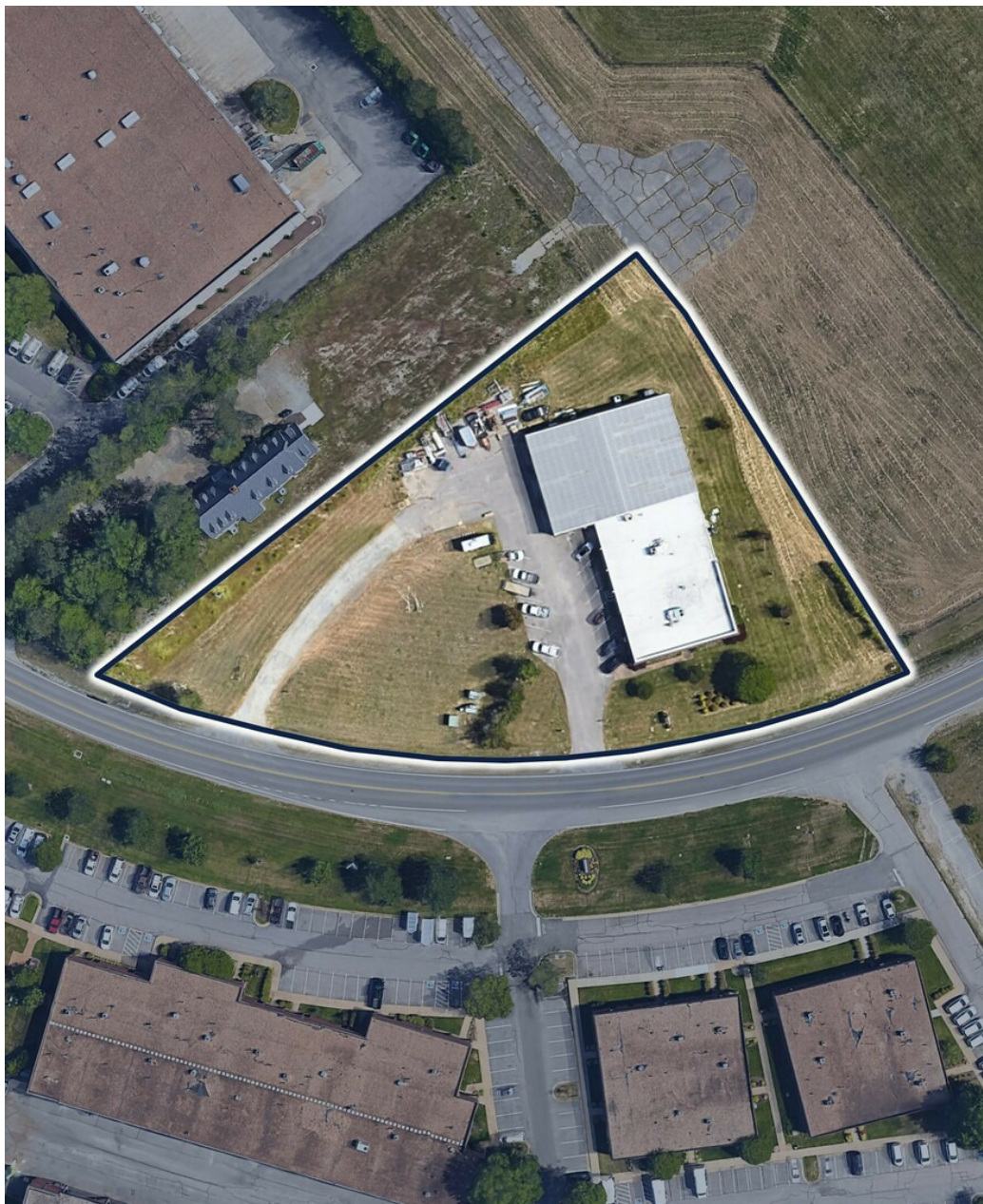
11,088 SF FLEX SPACE

7400 Whitepine Rd | North Chesterfield, VA 23237



S.L. NUSBAUM

REALTY CO.



## ANDREW BRODIE

Senior Associate

C. 804.759.5970

O. 804.944.9254

abrodie@slnusbaum.com

## TRIB SUTTON

Senior Director

C. 804.337.6525

O. 804.477.8785

tsutton@slnusbaum.com

### COMMITMENT. INTEGRITY. EXCELLENCE. SINCE 1906.

Serving the Southeast and Mid-Atlantic region for well over a century, S.L. Nusbaum Realty Co. continues to provide a comprehensive experience for our clients and customers in all aspects of the multifamily and commercial real estate industry.

[CLICK HERE TO LEARN MORE](#)

### DISCLAIMER:

No warranty or representation, expressed or implied, is made to the accuracy or completeness of the information contained herein, and same is submitted subject to errors, omissions, change of price, rental or other conditions, withdrawal without notice, and to any special listing conditions imposed by the property owner(s). As applicable, we make no representation as to the condition of the property (or properties) in question or the property's (or properties') compliance with applicable laws, regulations, and codes.