

# Up to 53,506 RSF of Exceptional Office Space Available

savills

Freshly Improved and Ready for Immediate Occupancy

FOR SUBLEASE

San Felipe Plaza 5847 San Felipe St, Houston, TX 77057





Exceptional headquarters space ready for immediate occupancy. Internal staircase connecting the 4th and 5th floor make this space ideal for an energy firm, professional services company, or law firm.

#### SPACE HIGHLIGHTS

53,506 SF

Total Available Square Feet

22,902 SF

5th Floor

22,902 SF

4th Floor

7,702 SF

2nd Floor

(available separately or with above)

---

Negotiable

Rental Rate

6/30/2030

Expiration

Immediately

Availability

TI Allowance

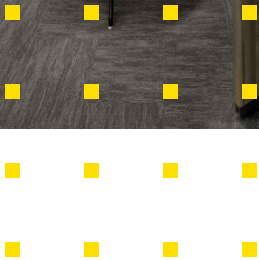
As-Is

3.25/1,000

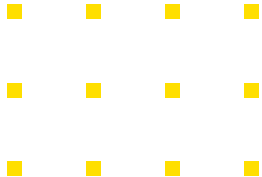
Parking Ratio (\$75 per space per month for reserved and \$40 per space per month for unreserved)

Furniture Available

New, high-end, state-of-the-art furnishings and equipment (FF&E) that have been minimally used



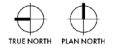






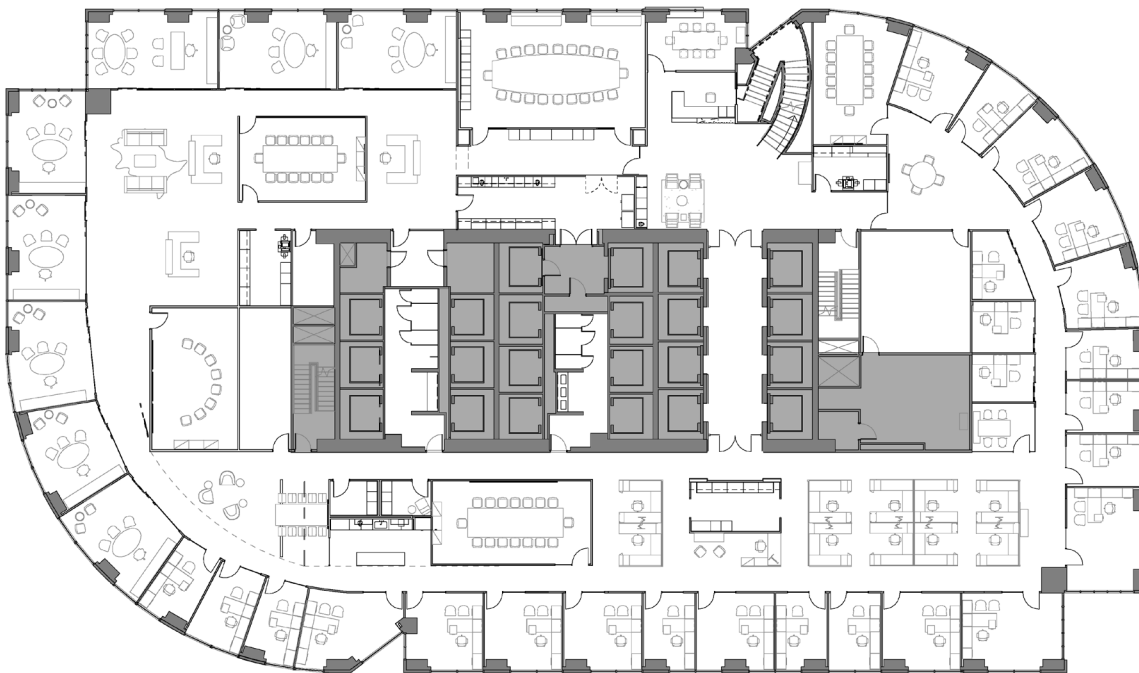


FLOOR PLAN - LEVEL 5  
1/16" = 1'-0"

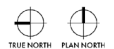


**5<sup>th</sup> Floor**

**22,902 SF**



FLOOR PLAN - LEVEL 4  
1/16" = 1'-0"

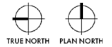


**4<sup>th</sup> Floor**

**22,902 SF**



FLOOR PLAN - LEVEL 2  
1/16/2020



**2<sup>nd</sup> Floor**

**7,702 SF**





**Mark O'Donnell**

+1 713 237 5509 (o)  
+1 713 805 6536 (m)  
modonnell@savills.us

**Cole Taylor**

+1 713 237 5543 (o)  
+1 713 822 8755 (m)  
ctaylor@savills.us



© 2025 Savills. All rights reserved. The information contained in this communication has been obtained from a variety of sources believed to be reliable but has not been verified. NO WARRANTY OR REPRESENTATION, EXPRESS OR IMPLIED, IS MADE AS TO THE CONDITION OF THE PROPERTY OR ACCURACY OR COMPLETENESS OF THE INFORMATION CONTAINED HEREIN AND SAME IS SUBMITTED SUBJECT TO ERRORS, OMISSIONS, CHANGE OF PRICE, RENTAL OR OTHER CONDITIONS, WITHDRAWAL WITHOUT NOTICE AND TO ANY SPECIFIC CONDITIONS IMPOSED BY THE PROPERTY OWNER OR LESSOR.