

693 FIFTH AVENUE

Between 54th and 55th Streets

MIDTOWN EAST
MANHATTAN | NY



 **JUDSON CRE** | 654 Madison Avenue New York, NY 10065 | (212) 202 9200

ONE-HALF OF ONE FULL COMMISSION, in accordance with the rates currently in use and on file with Judson CRE, LLC when received from our principals, will be paid to the cooperating broker who consummates a lease which has been fully executed and delivered. All information furnished with respect to the subject matter hereof has been obtained from sources deemed reliable. No representation or warranty as to the accuracy thereof is made and such information is submitted subject to errors, omissions, prior sale, change of price, rental or other conditions, or withdrawal without notice. License #: 10491210046.

LOCATION

Between 54th and 55th Streets

SPACE

19th Floor: Approx. 2,663 SF

20th Floor: Approx. 2,258 SF

TERM

Through September 2031

POSSESSION

Immediate

RENT

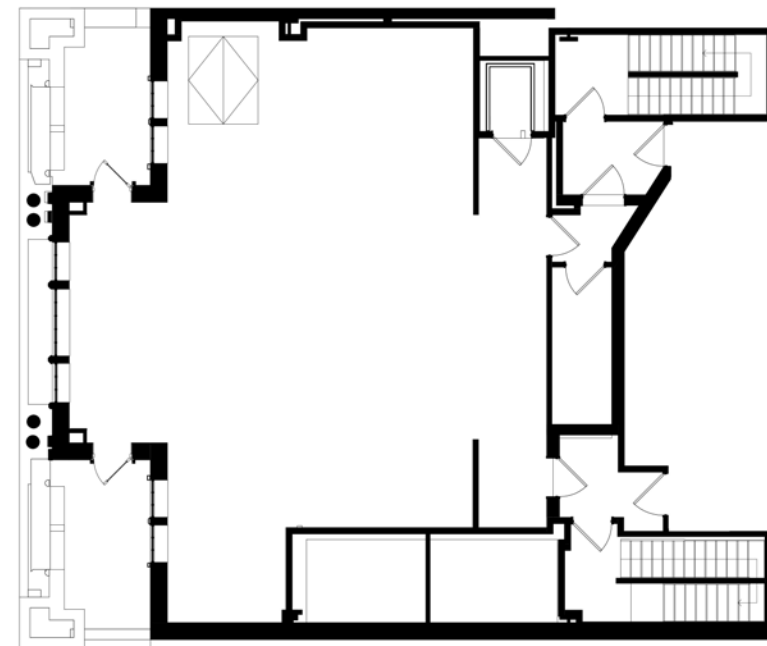
Upon Request

PROPERTY DESCRIPTION

Located adjacent to The St. Regis hotel, this duplex office sublease offers Central Park views from the penthouse floor. Neighboring tenants include Gucci, Prada, Armani, MOMA, The Peninsula, and The Polo Bar.



19th Floor



20th Floor



 **JUDSON CRE** | 654 Madison Avenue New York, NY 10065 | (212) 202 9200

All information furnished with respect to the subject matter hereof has been obtained from sources deemed reliable. No representation or warranty as to the accuracy thereof is made and such information is submitted subject to errors, omissions, prior sale, change of price, rental or other conditions, or withdrawal without notice. License #: 10491210046.

693 FIFTH AVENUE

Points of Interest



FIFTH AVENUE

Fifth Avenue, one of the most famous streets in the world, stretches from Washington Square Park to Harlem in Manhattan. It is renowned for its upscale shops, luxury boutiques, and iconic landmarks such as the Empire State Building and St. Patrick's Cathedral. Lined with elegant storefronts and historic buildings, Fifth Avenue embodies the epitome of New York City's sophistication and glamour.



CENTRAL PARK

Central Park, an iconic green oasis in the heart of Manhattan, spans over 840 acres. Designed by Frederick Law Olmsted and Calvert Vaux, it offers a tranquil escape from the bustling city streets. From its winding pathways and scenic lakes to its famous landmarks like Bethesda Terrace and Strawberry Fields, Central Park captivates visitors with its natural beauty and diverse attractions.



MOMA

The Museum of Modern Art (MoMA), located in Midtown Manhattan, is one of the world's leading institutions dedicated to modern and contemporary art. Its vast collection includes works by renowned artists such as Vincent van Gogh, Pablo Picasso, and Andy Warhol. With its diverse exhibitions, educational programs, and innovative approach to showcasing modern art, MoMA attracts millions of visitors each year, making it a cultural hub in New York City.

PLEASE CONTACT:

NICHOLAS T. JUDSON

212-202-9200
 njudson@judsoncre.com

CROSBY MATTHEWS

212-202-9200
 cmatthews@judsoncre.com

CALVIN HODER

212-202-9200
 choder@judsoncre.com

59th Street		Dior
	Pulitzer Plaza	
		Apple
58th Street	Verdura	Moncler
		Bergdorf Goodman's Men's
	Bergdorf Goodman Van Cleef	Hublot Louis Vuitton
57th Street		Saint Laurent
	BVLGARI Mikimoto Chopard Boutique Prada	Tiffany & Co. Gucci
56th Street		Armani Dolce & Gabbana Swatch 711 Omega Boutique MANGO
		The Polo Bar
55th Street	The Peninsula WEMPE	Harry Winston Breguet Boutique Blancpain
		693 FIFTH AVENUE Canada Goose
54th Street		COACH Stuart Weitzman Proper Cloth Microsoft Experience Center
	MOMA Swarovski	
53rd Street	UNIQLO Abercrombie & Fitch	P448 Store Juice Press
	TISSOT ZARA	Ferragamo Tourneau
52nd Street		Cartier FIG & OLIVE
	Nike Dyson Demo Store Victoria's Secret	Longchamp Furla H.Stern
51st Street		Bond No. 9
	The LEGO® Store Ralph's Coffee	
	Equinox Banana Republic	St Patrick's Cathedral
50th Street		
	Cole Haan Mulberry USA Tous KULE Michael Kors	Saks Fifth Avenue
49th Street		