

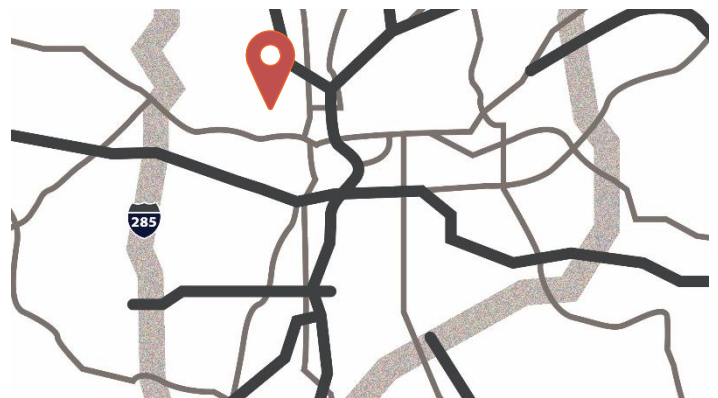


1122 Old Chattahoochee Ave, Ste D, Atlanta, GA

Opportunity

- 7,032 sf available
- 30,855 total building size
- 14' clear height
- 22' x 40' bay size
- Doors – 1 (12'x14') DI
- 160' building depth

Location



16 Miles to
Airport



1 Miles to
I-75

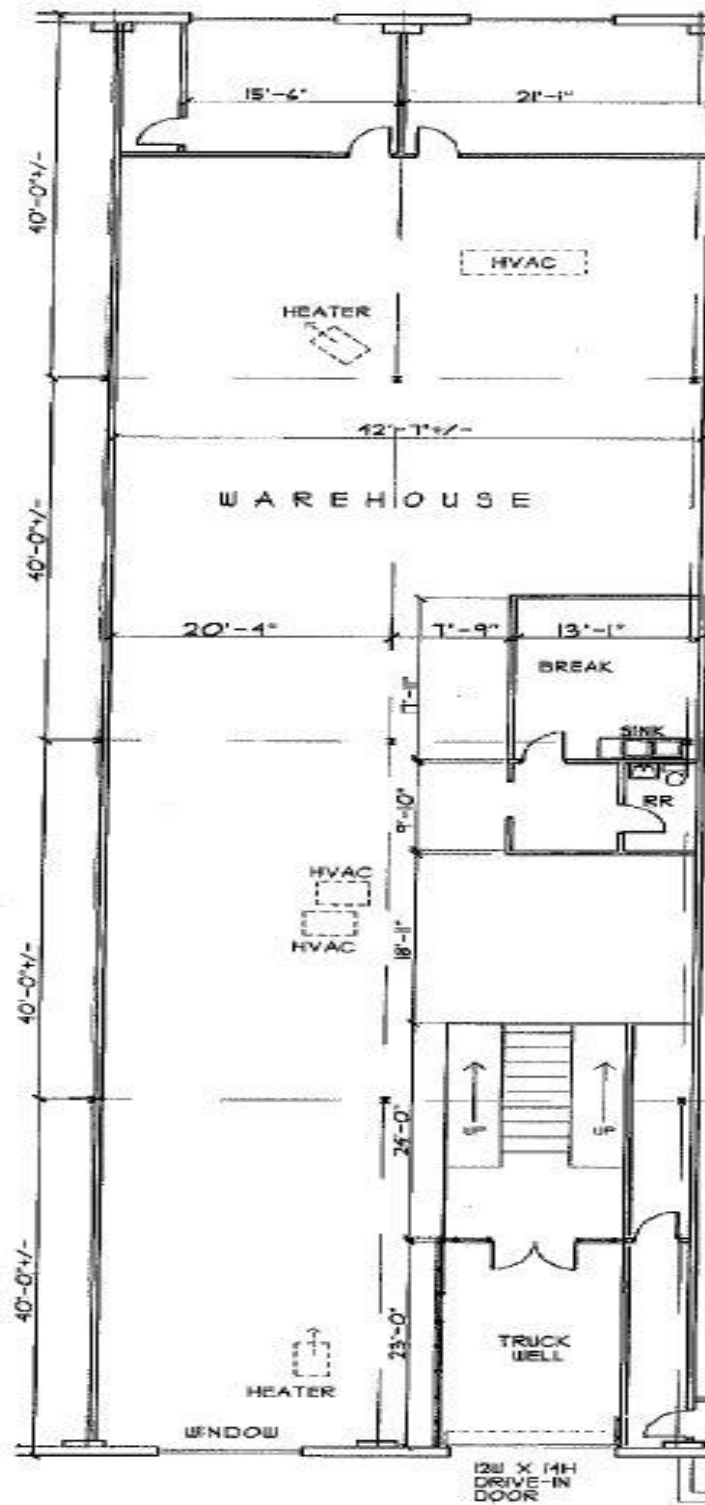


3 Miles to
I-285

**For further
information**

Bruce Logue
Principal
+1 770 916 6150

avisonyoung.com



For further information



Bruce Logue
Principal
+1 770 916 6150
bruce.logue@avisonyoung.com

Owned by

