

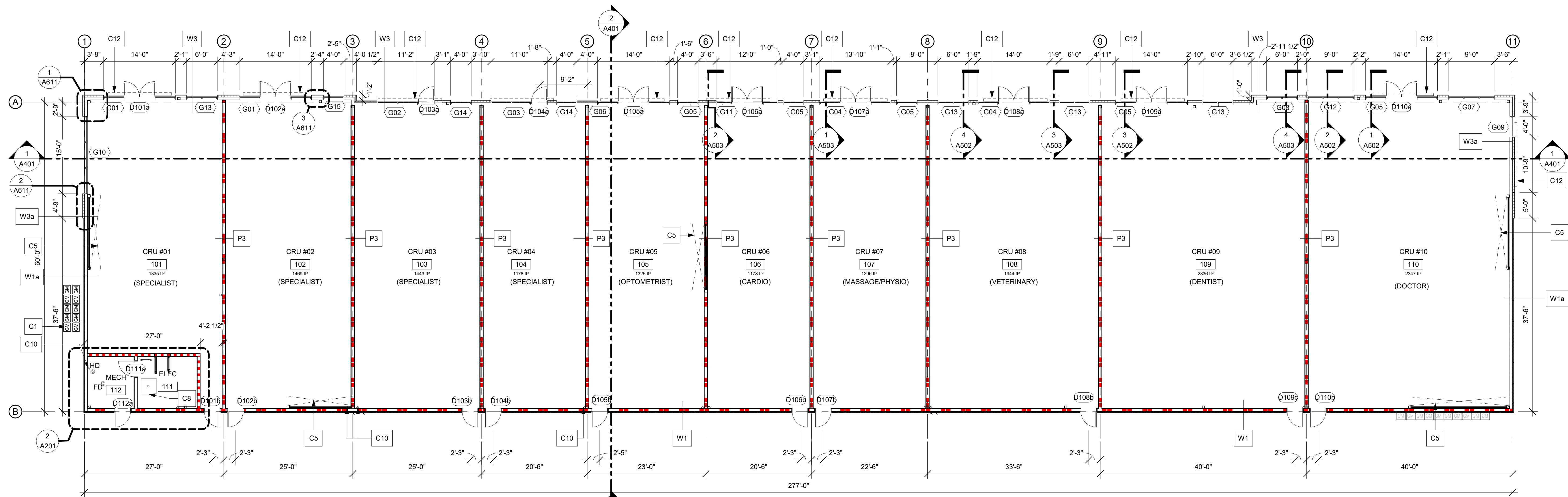




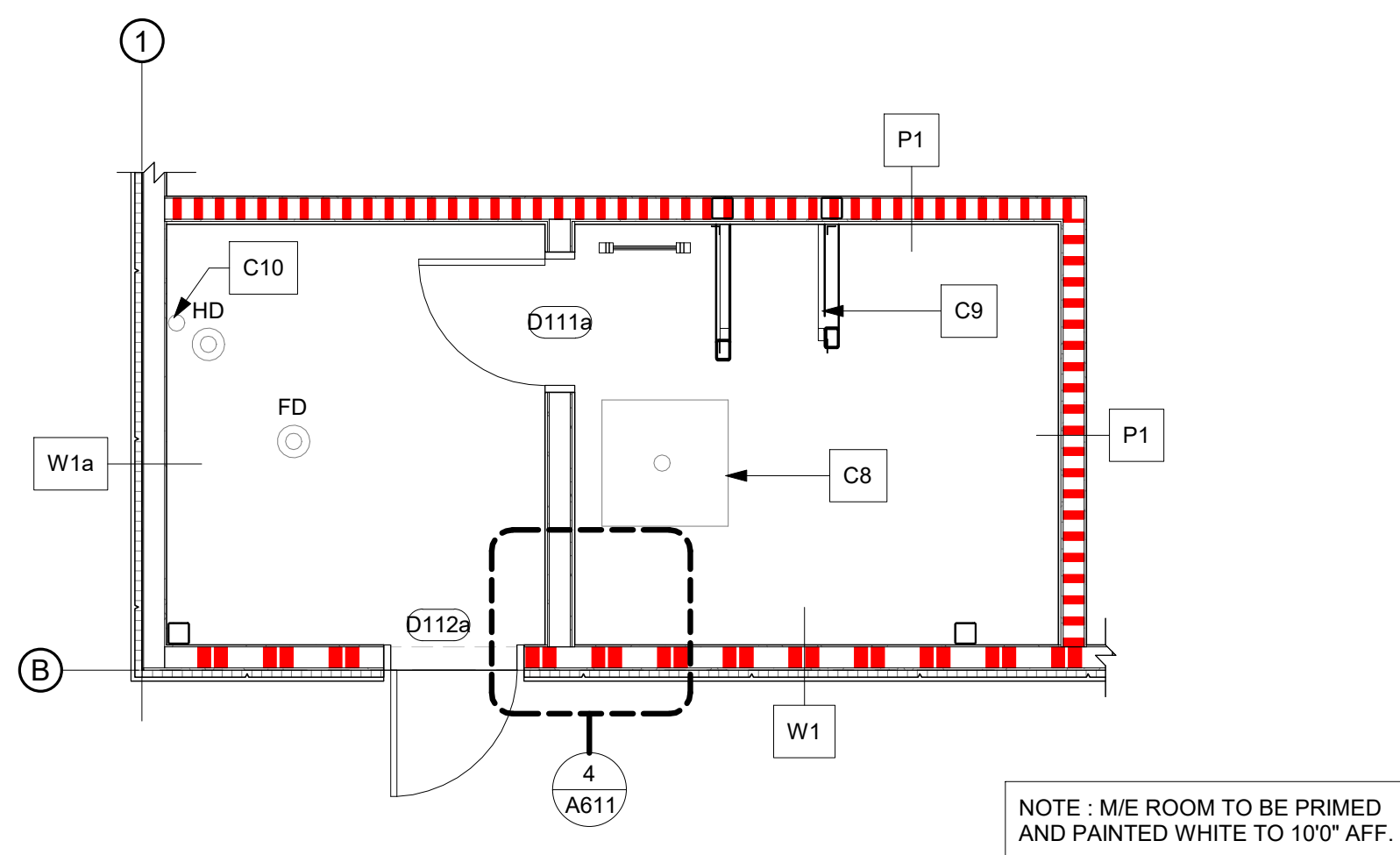
PLANWORKS

600, 10339 - 124 Street NW  
Edmonton, Alberta T5N 3W1

WEAREPLANWORKS.CA  
780.643.3233



1 MAIN FLOOR PLAN - BUILDING 03  
A201 SCALE: 1" = 10'-0"  
NORTH



2 ELEC/MECH ROOM  
A201 SCALE: 1/4" = 1'-0"  
NORTH

- GENERAL MAIN FLOOR NOTES:**
- REFER TO A001 FOR GENERAL NOTES AND CONDITIONS APPLYING FOR ALL DRAWINGS
  - REFER TO A002 FOR CONSTRUCTION ASSEMBLIES
  - REFER TO DRAWINGS A501 TO A502 FOR TRANSITION OF CONSTRUCTION ASSEMBLIES
  - REFER TO DRAWINGS A901 FOR GLAZING AND DOOR SCHEDULES
  - MECHANICAL AND ELECTRICAL ROOM TO BE PRIMED AND PAINTED WHITE TO 10'-0" AFF.

- FLOOR PLAN SYMBOL LEGEND**
- GAS METER; REFER TO MECHANICAL
  - SUSPENDED TRANSFORMER; REFER TO ELECTRICAL FOR SIZES; REFER TO STRUCTURAL FOR SUPPORT
  - NON-FREEZE HOSE BIBB; REFER TO MECHANICAL
  - FIRE EXTINGUISHER IN CABINET; REFER TO MECHANICAL
  - FLOOR DRAIN; REFER TO MECHANICAL
  - HUB DRAIN; REFER TO MECHANICAL
  - EXTERIOR DECORATIVE LIGHT - CENTERED IN ELEMENT; REFER TO ELECTRICAL
  - BARRIER-FREE DOOR OPERATOR; REFER TO DOOR SCHEDULE AND ELECTRICAL
  - WATER METER; REFER TO MECHANICAL
  - ELECTRICAL PANEL; REFER TO ELECTRICAL
  - EQUIPMENT GROUNDING; REFER TO MECHANICAL
  - EMERGENCY FIXTURE; REFER TO MECHANICAL

FLOOR PLAN KEYNOTE LEGEND	
C1	GAS METER C/W PROTECTION BOLLARDS BY GAS PROVIDER - COORDINATE EXACT LOCATION OF BOLLARDS WITH ARCHITECT PRIOR TO INSTALLING - G.C. TO PAINT BOLLARDS BENJAMIN MOORE "DEEP CAVIAR" 2130-20 - PENETRATE LOW ON WALL - PROVIDE STAINLESS STEEL ESCHUTION PLATE TO EXTERIOR; SIZED TO COVER PENETRATION
C2	PROVIDE FURRING AT NON-FREEZE HOSE BIBB FULL HEIGHT TO UNDERSIDE OF DECK USING THE SMALLEST FRAMING POSSIBLE. ENSURE SHUTOFF VALVE IS TIGHT TO UNDERSIDE OF DECK. PROVIDE KEYS TO LANDLORD FOR ACCESS. ENSURE VALVE ARM LENGTH IS ADEQUATE. VERIFY EACH LOCATION; TYP.
C3	PROVIDE FURRING AT GAS LINES TO UNDERSIDE OF DECK USING THE SMALLEST FRAMING POSSIBLE. ENSURE SHUTOFF VALVE IS TIGHT TO UNDERSIDE OF DECK. PROVIDE KEYS TO LANDLORD FOR ACCESS. ENSURE VALVE ARM LENGTH IS ADEQUATE. VERIFY AT EACH LOCATION; TYP
C4	RAINWATER LEADER; LOCATE ON BACKSIDE OF COLUMN OR WITHIN WALL - INSTALL TIGHT TO COLUMN; COORDINATE ACCESS PANEL LOCATION W/ ARCHITECT AND OWNER.
C5	STRUCTURAL CROSS BRACING LOCATION; REFER TO STRUCTURAL
C6	PROVIDE 24"x24" BOX-OUT IN CONCRETE SLAB AT SANITARY STUB - REFER TO MECHANICAL FOR SANITARY INFORMATION
C7	ARCHITECTURAL BATTEN VERTICAL FEATURE - REFER TO 3/A611 FOR MORE INFORMATION - TYP.
C8	UNDER SLAB RADON PIT - PROVIDE EXPANDED METAL MESH ON TOP AND SIDES ON CONCRETE BLOCK PIT; REFER TO STRUCTURAL FOR DETAIL - REFER TO MECHANICAL FOR PIPING
C9	ROOF ACCESS LADDER - REFER TO DETAIL 8/A631
C10	RADON PIPE - REFER TO MECHANICAL - PIPE TO PENETRATE ROOF - CAP AT ROOF LEVEL - REFER TO DETAIL 4/A631
C11	WATER METER DISTRIBUTION AND CLEARANCE FOOTPRINT - REFER TO MECHANICAL
C12	TENANT FASCIA ABOVE - N.I.C; REFER TO ELEVATIONS FOR EXACT LOCATION.

REV #	ISSUE DATE	DRAWING ISSUE	DRAWN/REVIEW

ISSUE #	ISSUE DATE	PROJECT ISSUE	DRAWN/REVIEW

CONSULTANT

PERMIT STAMP

SEAL

THIS DRAWING, AS AN INSTRUMENT OF SERVICE IS THE PROPERTY OF PLANWORKS ARCHITECTURE INC. THE COPYRIGHT IN THE SAME BEING RESERVED TO THEM. NO REPRODUCTION IS ALLOWED WITHOUT THE PERMISSION OF PLANWORKS ARCHITECTURE INC. AND WHEN MADE MUST BEAR ITS NAME. THIS DRAWING IS NOT TO BE SCALED. THE CONTRACTOR IS TO VERIFY DIMENSIONS AND DATA NOTED HEREIN WITH THE CONDITIONS ON SITE AND IS RESPONSIBLE FOR REPORTING ANY DISCREPANCY TO PLANWORKS ARCHITECTURE INC. FOR ADJUSTMENT.

PROJECT  
**EASTPOINT COMMERCIAL - BUILDING 03**  
#100, 5291 - 28 AVENUE SE, CALGARY, AB

DRAWING TITLE  
**MAIN FLOOR PLAN**

PROJECT NO. 2987  
PLOT DATE 29/01/2026  
SCALE AS NOTED

SHEET NO. **A201**