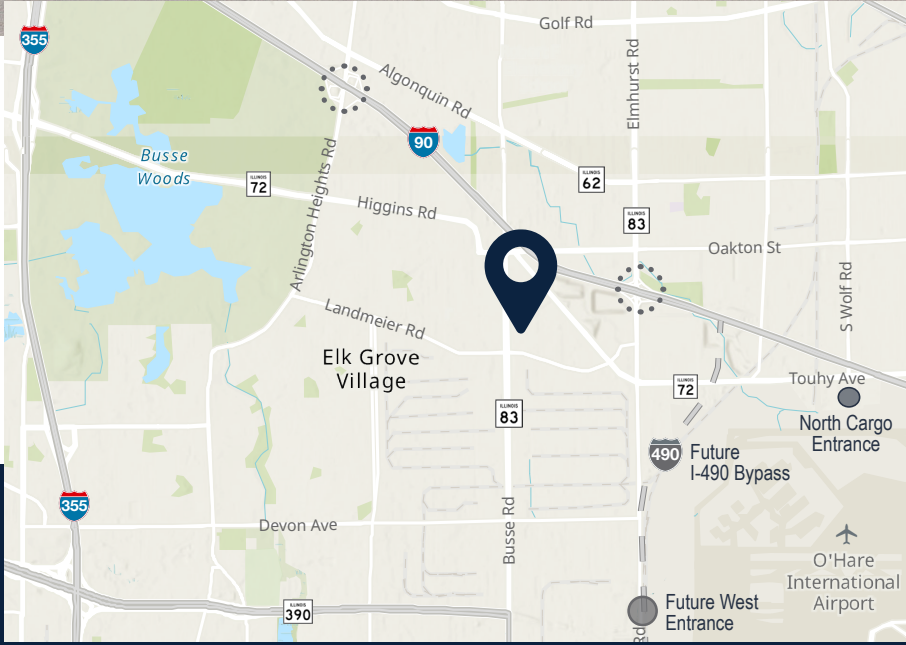


For Lease

Regent O'Hare Business Center

1800-1872 Brummel Drive, Elk Grove Village, IL

22,920 SF / Unit 1844



Available SF	22,920 SF
Loading	2 Interior Docks
Ceiling Height	20'6"
Office Area	+/- 4,400 SF
Power	800A @ 480V
Car Parking	1.29 / 1,000 SF
Building SF	266,989 SF



**TERRY
HERLIHY**

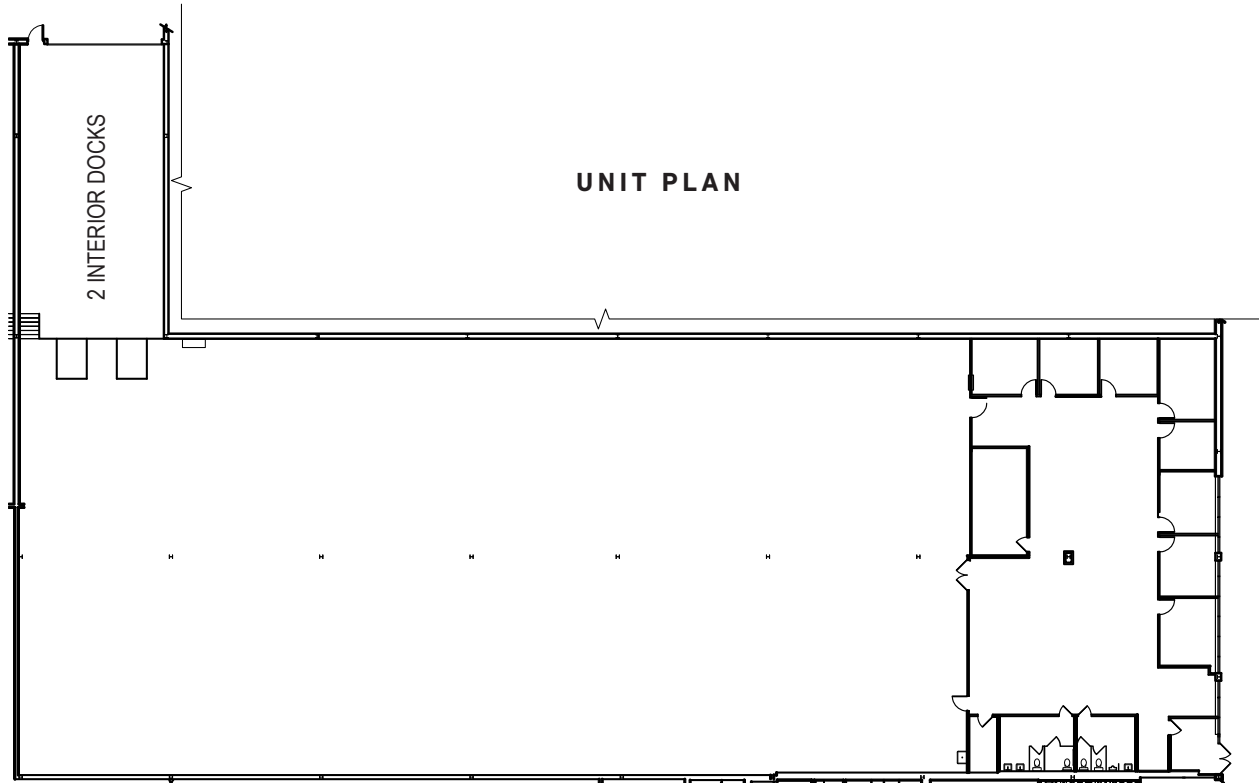
EXECUTIVE VICE PRESIDENT
therlihy@hiffman.com
630.693.0664

No warranty or representation, expressed or implied, is made as to the accuracy of the information contained herein, and same is submitted subject to error and omissions.

Regent O'Hare Business Center

1800-1872 Brummel Drive, Elk Grove Village, IL

22,920 SF / Unit 1844



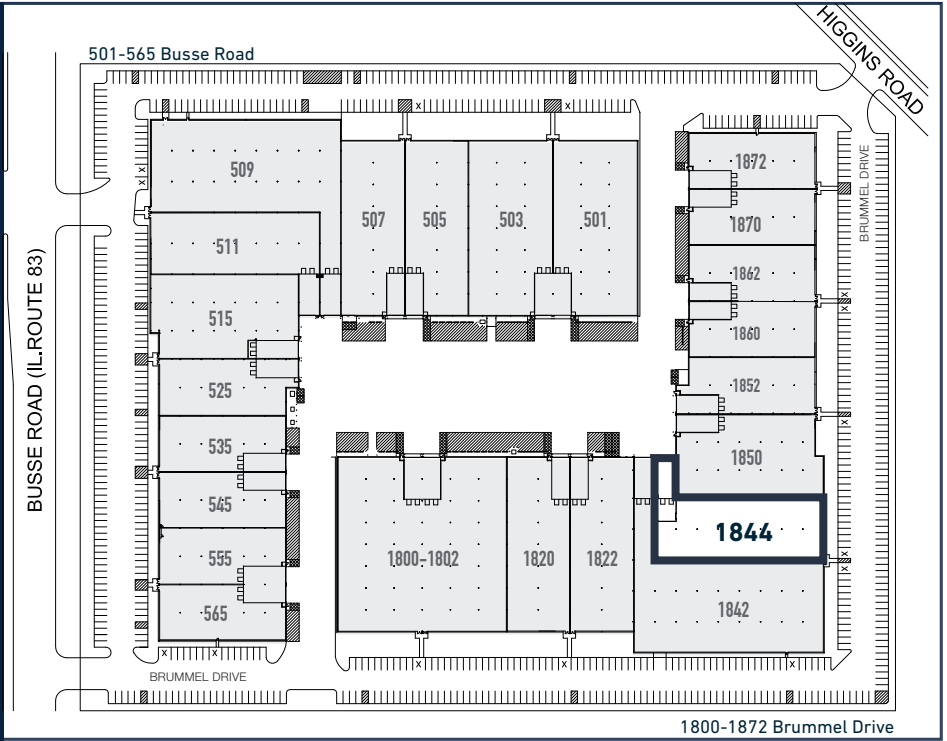
BUILDING / SITE PLAN

HIGHLIGHTS

- Partial air conditioning in warehouse
- High image property
- Institutional ownership & management

LOCATION

- Located at the northeast corner of IL Route 83 and Landmeier Road
- Near north cargo entrance and future west entrance to O'Hare Airport
- Minutes from 4-way interchange at I-90 & Elmhurst Road



No warranty or representation, expressed or implied, is made as to the accuracy of the information contained herein, and same is submitted subject to error and omissions.