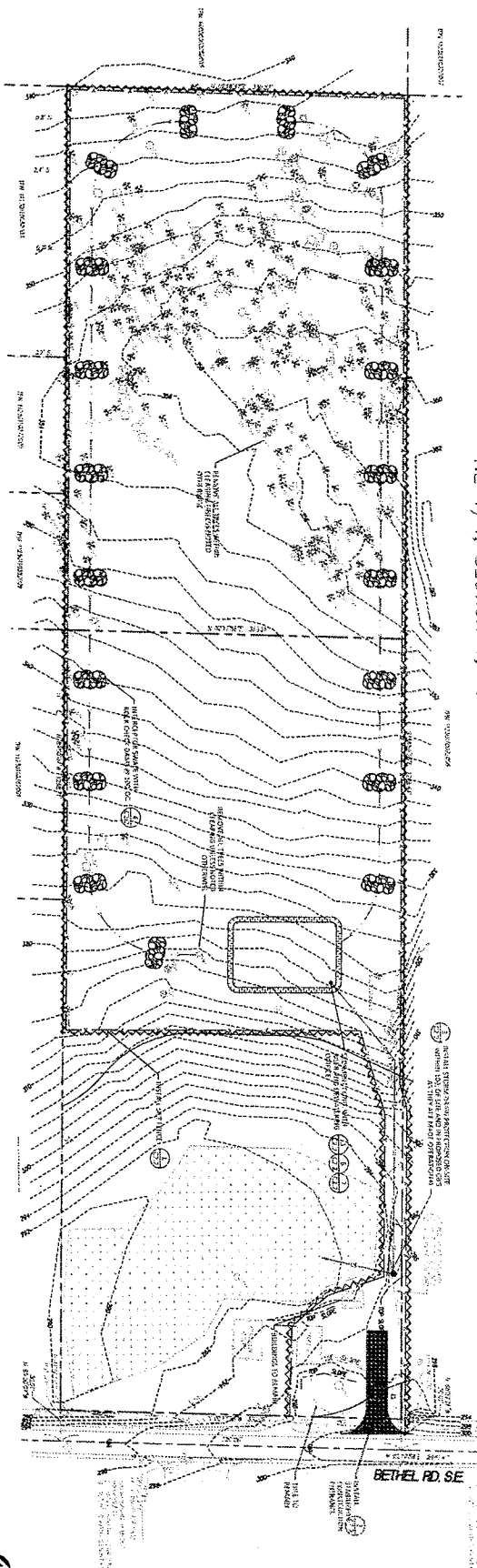


NE 1/4, SECTION 1, TOWNSHIP 23 NORTH, RANGE 1 EAST, W.M.

1 TEMPORARY EROSION CONTROL PLAN
DATE: 7-1-19



NOT TO SCALE
AS SHOWN ON THIS PLAN AND IN CONNECTION WITH THIS PLAN, ALL RIGHTS RESERVED

BETHEL RD. SE

ENGINEERING

1000 1ST AVE. N.E. SUITE 200
PORT ORCHARD, WA 98366
PHONE: (360) 776-4800
FAX: (360) 776-6535

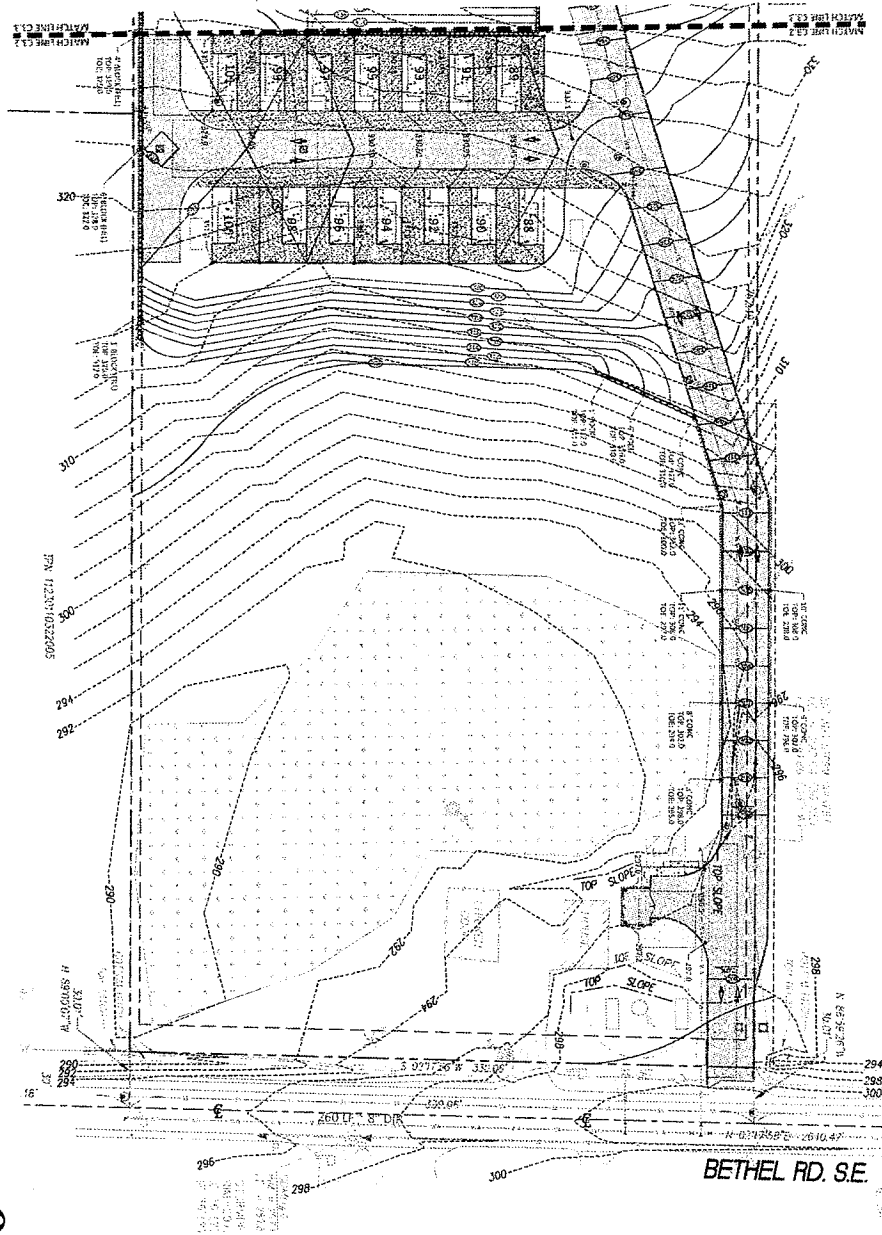
MARK	DATE	DESCRIPTION
	02/20/19	CUP SUBMITTAL

SIDNEY PARK
5230 BETHEL RD SE
PORT ORCHARD WA 98367

TEMPORARY
EROSION CONTROL PLAN

C2.1

NE 1/4, SECTION 1, TOWNSHIP 23 NORTH, RANGE 1 EAST, W.M.



1 PARTIAL GRADING PLAN
SCALE: 1"=40'



BETHEL RD. S.E.

C3.3

SIDNEY PARK
5230 BETHEL RD SE
PORT ORCHARD WA 98367

PARTIAL GRADING PLAN

MARK	DATE	DESCRIPTION
	02/20/18	CUP SUBMITTAL
DESIGN		DLI
DRAWN		JRU
CHECK		18244.20
DATE	02/20/19	



ENGINEERING

2001 4TH AVE. S., SUITE 200
PORT ORCHARD, WA 98366
PHONE (360) 778-8200
FAX (360) 778-8288

