



# 330 S. Wells Street

## CHICAGO, ILLINOIS

**Retail Space Available**  
Northwest corner of Wells and Van Buren

FOR MORE INFORMATION, PLEASE CONTACT

ANTHONY CAMPAGNI • 847.651.8669  
ac@canvasrealestate.com

ELAN RASANSKY • 414.380.1555  
elan@canvasrealestate.com

MICHAEL WALLACE • 614.537.2403  
mwallace@canvasrealestate.com

## DEMOGRAPHICS



**80k+**

Total Population  
1 Mile

19k+      2.2k+  
0.5 Miles    0.25 Miles



**\$178k+**

Average HH Income  
1 Mile

\$165k+      \$140k+  
0.5 Miles    0.25 Miles



**486k+**

Daytime Population  
1 Mile

263k+      75.1k+  
0.5 Miles    0.25 Miles



### THE LOOP

- Ground floor corner retail space located at the northwest corner of Wells and Van Buren.
- Steps away from Chicago's historic Financial District.
- Walking distance from CTA Brown, Purple, Orange and Pink lines.
- Building includes 130 new residential rental units.

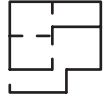
### NEIGHBORING RETAILERS

Odoba, Greek Kitchen, Dunkin Donuts, Panda Express, FedEx Office, and Giordano's

CANVAS

# FLOOR PLANS

## SINGLE TENANT - OPTION A



**5,225 sqft**

Tenant A

### FRONTAGE



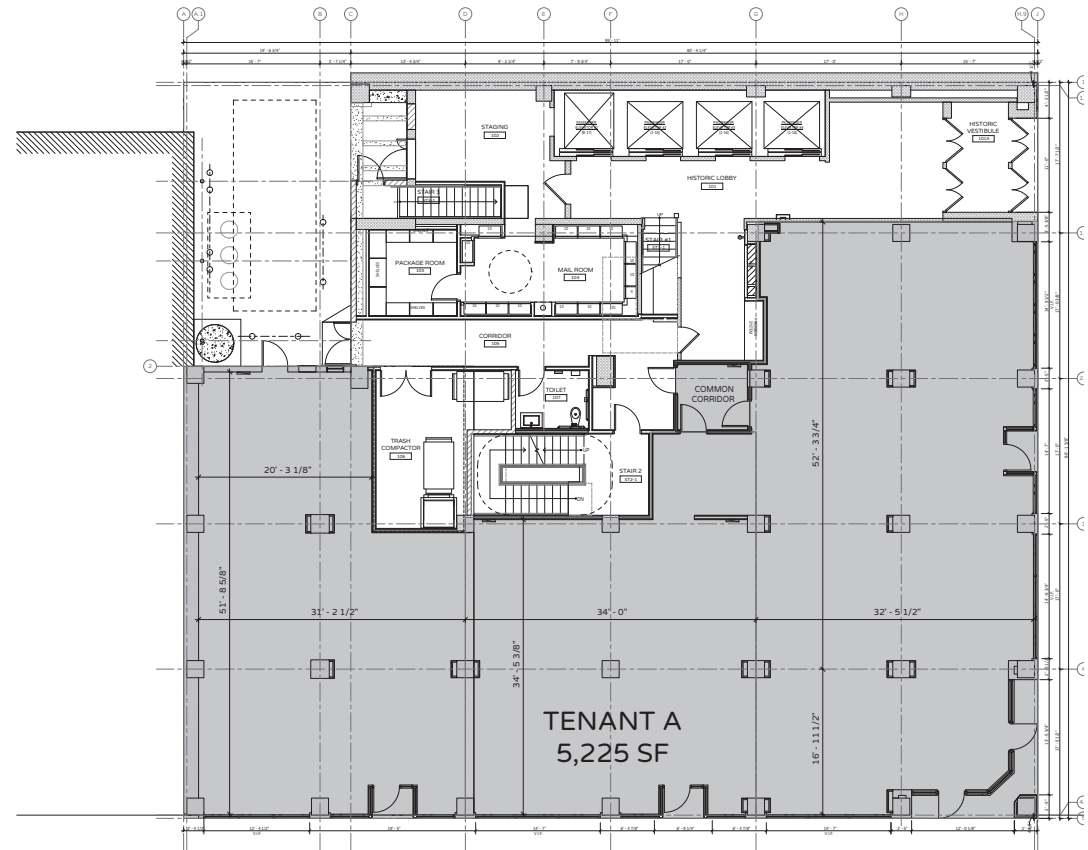
**68 ft**

S. Wells Street



**97 ft**

W. Van Buren Street



W. VAN BUREN STREET

S. WELLS STREET

CANVAS



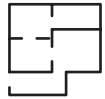
# FLOOR PLANS

## MULTI TENANT - OPTION B



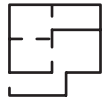
**1,536 sqft**

Tenant A



**1,346 sqft**

Tenant B



**2,343 sqft**

Tenant C

## FRONTAGE



**31 ft**

Tenant A on W. Van Buren Street



**34 ft**

Tenant B on W. Van Buren Street



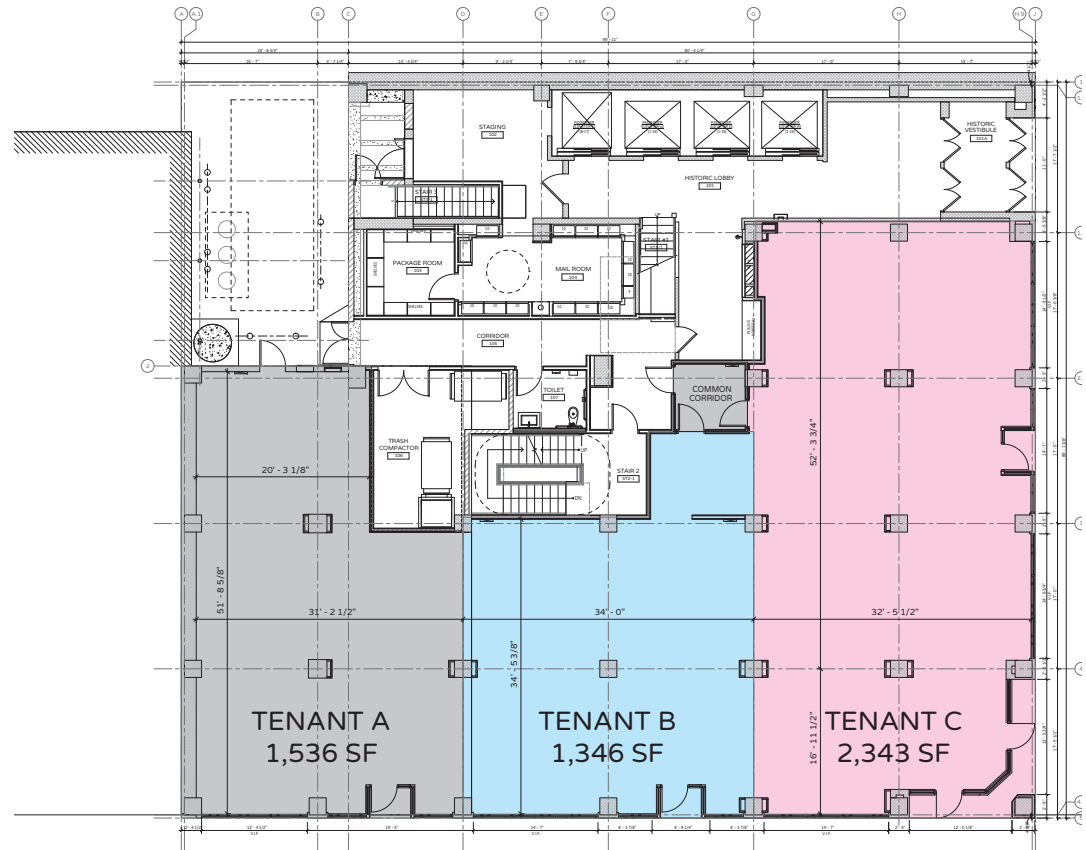
**32 ft**

Tenant C on W. Van Buren Street



**68 ft**

Tenant C on S. Wells Street



S. WELLS STREET

W. VAN BUREN STREET

CANVAS



# STREET MAP

330 S. Wells Street  
CHICAGO, ILLINOIS

SPACE AVAILABLE



FOR MORE INFORMATION,  
PLEASE CONTACT

ANTHONY CAMPAGNI  
ac@canvasrealestate.com  
847.651.8669

ELAN RASANSKY  
elan@canvasrealestate.com  
414.380.1555

MICHAEL WALLACE  
mwallace@canvasrealestate.com  
614.537.2403

CANVAS

