



AVAILABLE FOR LEASE



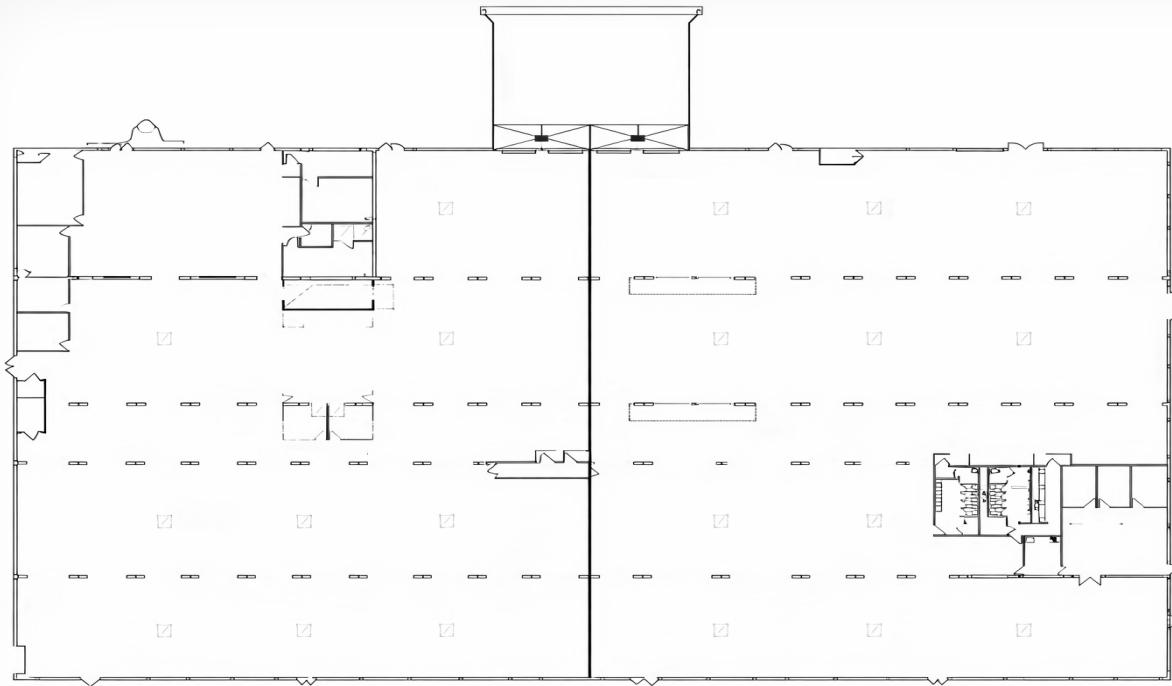
1300 S LITCHFIELD RD, BLDG 270
GOODYEAR, ARIZONA 85338

- UP TO 54,000 SF AVAILABLE (DIVISIBLE)
- \$0.79 SF + NNN
- HEAVY POWER
- FOUR LOADING DOCKS
- TWO GRADE LEVEL DOORS
- AMPLE PARKING
- SECURED YARD

Scott Wiley Associate Broker 623.210.3749 scott@citywidecre.com	Kate Wiley Sales & Leasing 602.872.0943 kate@citywidecre.com	Ken Schawl Sales & Leasing 623.326.3755 ken@citywidecre.com	Todd Hamilton, SIOR, CCIM Partner/Designated Broker 602.909.8759 todd@citywidecre.com
---	--	---	---

1645 E Missouri Avenue, Suite 230
Phoenix, Arizona 85016
602.313.1000 • citywidecre.com





PROPERTY DETAILS

- 270-A Suite - 30,047 SF
- 270-B Suite - 23,953 SF
- **54,000 SF Total**
- 100 kVa 277/480 3-Phase (270-A)
- 500 kVa 208/120 3-Phase (270-B)
- **3000 Amps Total**
- LED Warehouse Lighting
- One Acre Secured Yard
- 12' to 14' Ceiling Height
- Ample Parking

CONTACT INFORMATION

Scott Wiley
Associate Broker
623.210.3749
scott@citywidecre.com

Kate Wiley
Sales & Leasing
602.872.0943
kate@citywidecre.com

Ken Schawl
Sales & Leasing
623.326.3755
ken@citywidecre.com

Todd Hamilton, SIOR, CCIM
Partner/Designated Broker
602.909.8759
todd@citywidecre.com

1645 E Missouri Avenue, Suite 230 • Phoenix, Arizona 85016
602.313.1000 • citywidecre.com

