

# CHRIST MEDICAL POB SPEC SUITE 304 | 1,588 RSF

4400 WEST 95TH STREET  
OAK LAWN, IL 60453



SCAN TO LEARN MORE ABOUT THIS LISTING

Stillwater

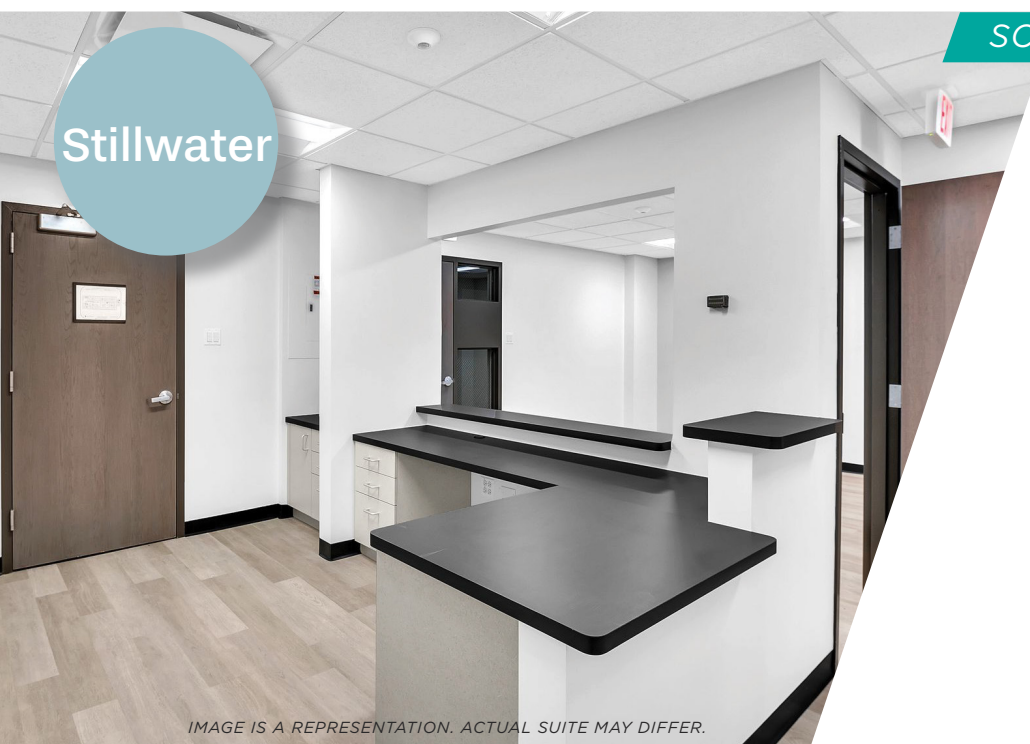


IMAGE IS A REPRESENTATION. ACTUAL SUITE MAY DIFFER.

## LEASE THIS MODERN, MOVE-IN READY MEDICAL SUITE

### Lease Your Move-In Ready SPEC Suite Today

Our SPEC suites combine convenience and quality in one perfect package. With sleek, modern finishes already in place, these suites are designed to be fully operational as soon as you move in. **Skip the hassle and delays of construction and permitting**—just move in and start seeing patients!

**FOR LEASING INFORMATION, CONTACT:**

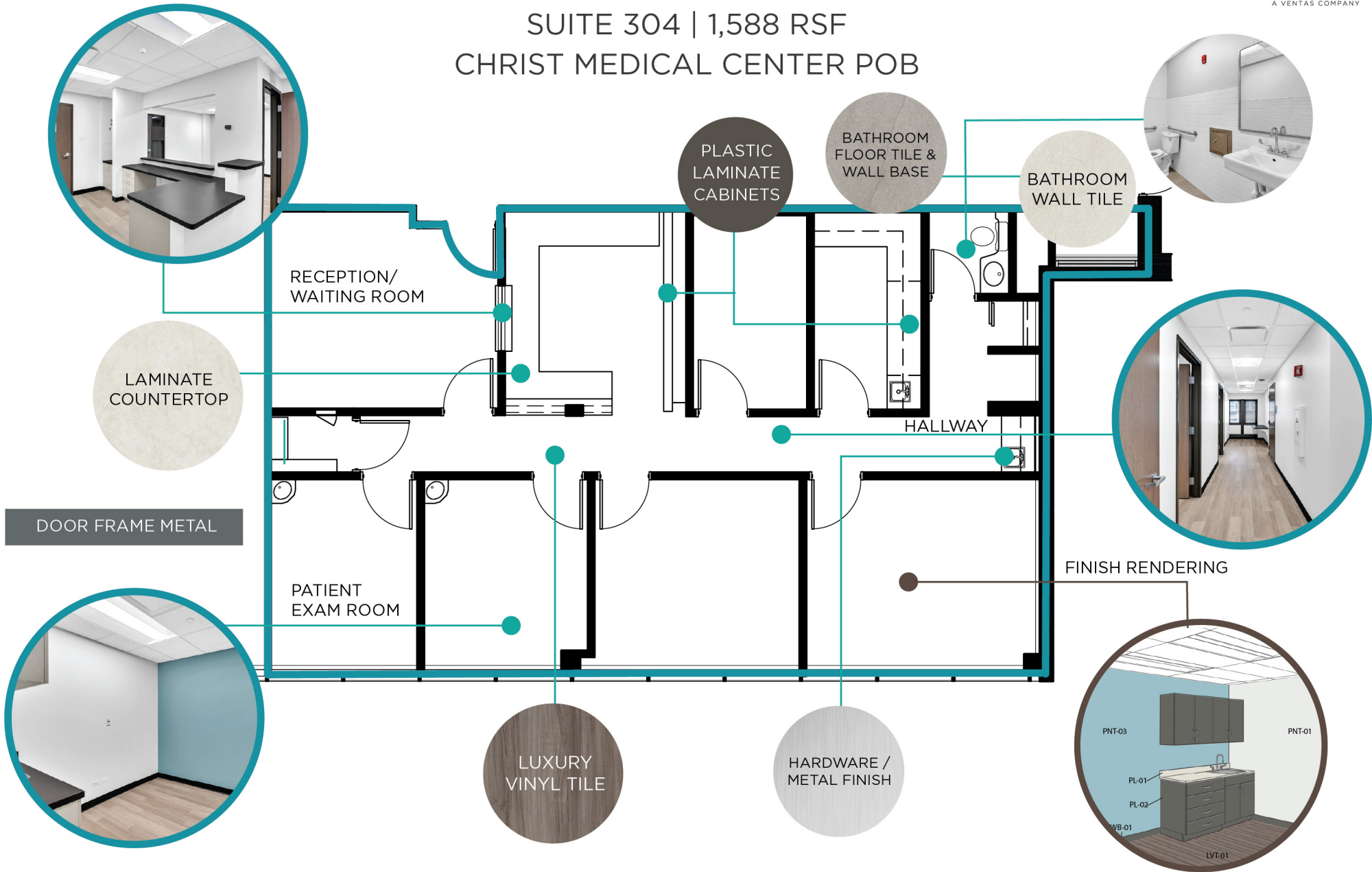
**REGIONAL LEASING DIRECTOR:** Brian Lauck | [brian.lauck@lillibridge.com](mailto:brian.lauck@lillibridge.com) / 630.550.6566

**REGIONAL LEASING ASSOCIATE:** Connor Chatlos | [connor.chatlos@lillibridge.com](mailto:connor.chatlos@lillibridge.com) / 513.255.1111



# SPEC SUITE - STILLWATER FINISH PALETTE

SUITE 304 | 1,588 RSF  
CHRIST MEDICAL CENTER POB



## STILLWATER COLOR PALETTE

PNT-01:  
OVERALL PAINT

PNT-02:  
ACCENT PAINT - OFFICE

PNT-03:  
ACCENT PAINT - PATIENT ROOM

PNT-04:  
DOOR FRAME PAINT