

COMMERCIAL REAL ESTATE

South End Charlotte

102

— AVAILABLE FOR SALE

1900 Abbott Street

Suite 102 | Charlotte, NC 28203

+/- 1,825 SF · LOFT-STYLE OFFICE · SOUTH END

1900 Abbott Street

Suite 102 | Charlotte, NC 28203

1,825
SQUARE FEET

ABOUT THIS PROPERTY

A premier loft-style office condominium situated in the heart of Charlotte's thriving South End. Suite 102 at 1900 Abbott Street offers a rare opportunity to own a distinguished workspace in one of the city's most sought-after commercial submarkets.

The space showcases an elevated industrial aesthetic with soaring open-beam ceilings and floor-to-ceiling windows that flood the interior with natural light. The thoughtfully configured layout with open collaborative zones – perfectly suited for professional work environment. A brand new HVAC system has just been installed, providing modern climate comfort and long-term peace of mind for any buyer.

Set within a distinguished multi-tenant office condo community, the building is home to a curated mix of design-forward businesses. Located just three blocks from the East/West Light Rail Station, connectivity for staff and clients is exceptional.

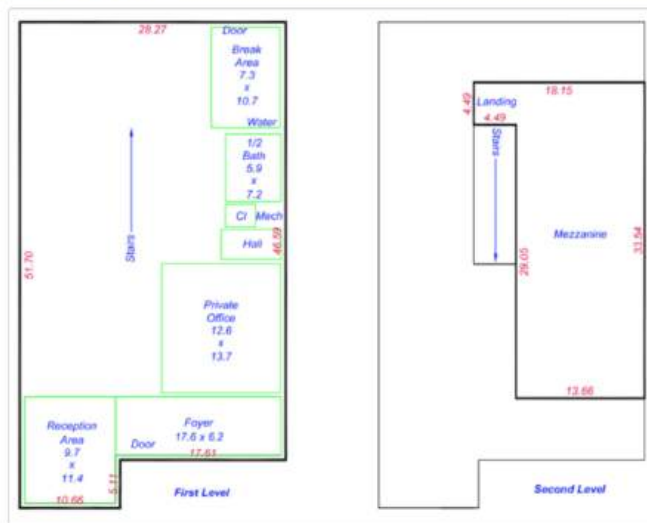
PROPERTY HIGHLIGHTS

- Loft-style industrial aesthetic with open-beam ceilings
- Brand new HVAC system recently installed
- Multiple private offices + open collaborative space
- Three blocks to East/West Light Rail Station
- On-site parking with beautifully landscaped grounds
- TOD-MUDD zoning in South End submarket
- Diverse mix of technology & creative co-tenants

PROPERTY DETAILS

Address	1900 Abbott St, Suite 102 Charlotte, NC 28203
Square Footage	+/- 1,825 SF
Use	Office
Zoning	TOD-MUDD
Parking	On-site parking
Traffic Counts	S Tryon St 21,500 VPD I-77 136,000 VPD
Sale Price	Call for Pricing

FLOOR PLAN

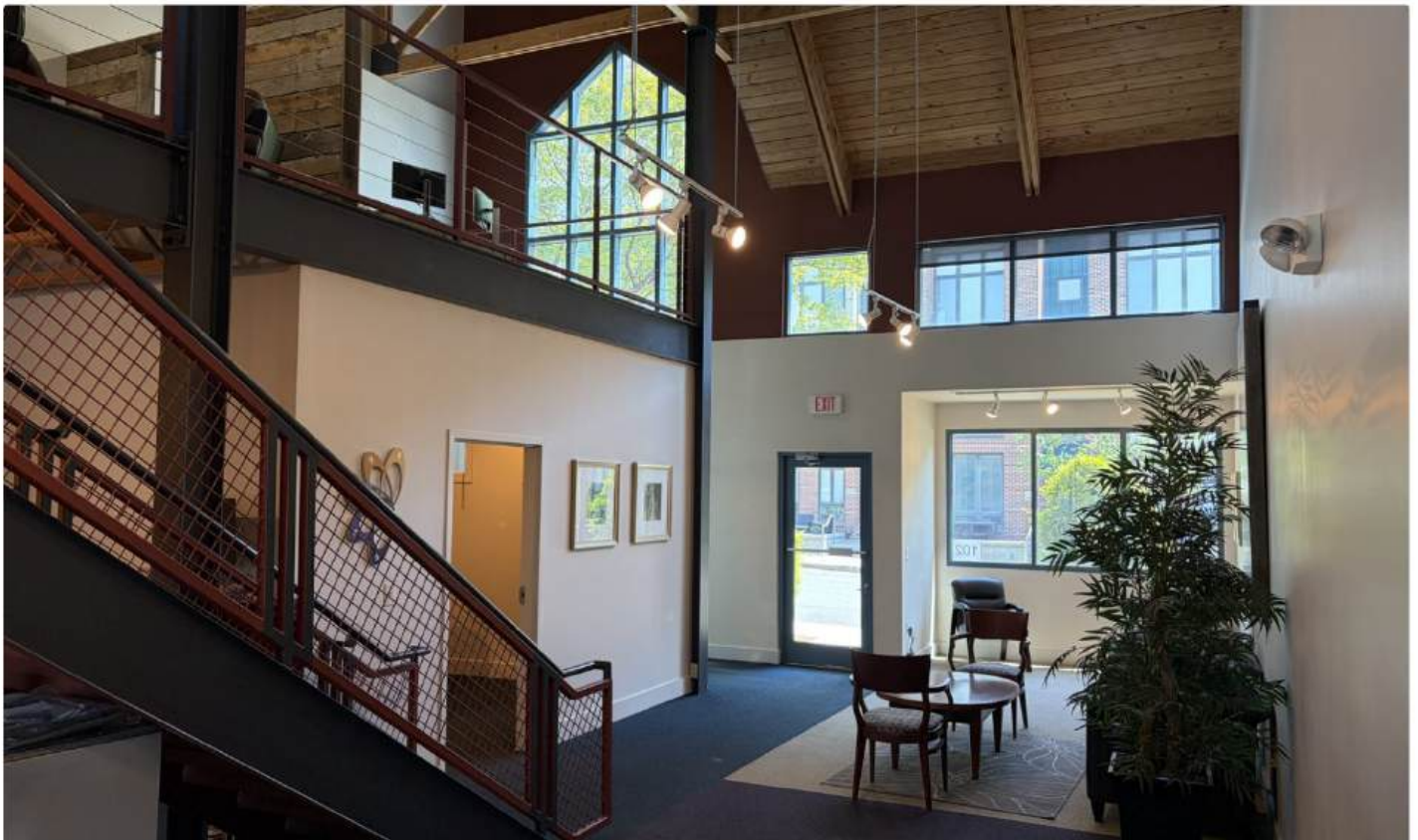
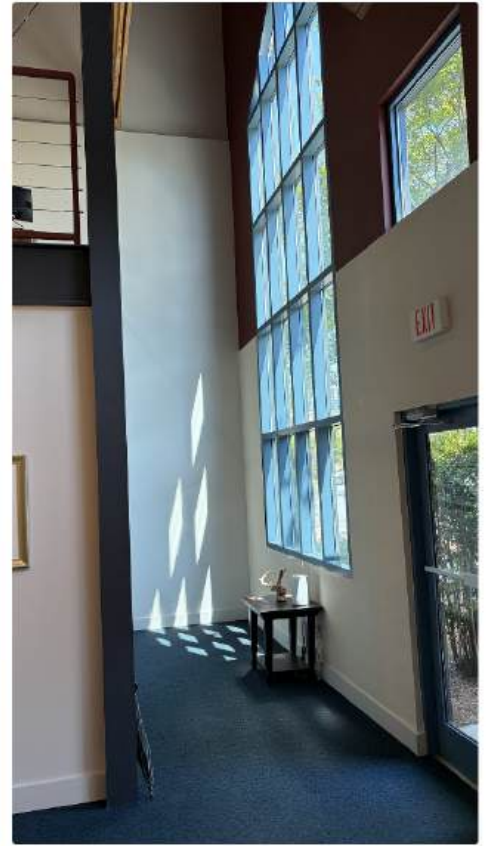


SUITE 102 • +/- 1,825 SF

GALLERY

Property Photos

1900 Abbott Street, Suite 102



— FOR SALE —

Interested in This Property?

A rare opportunity to own a premier loft-style office condominium in Charlotte's dynamic South End. Contact us today for pricing, a tour, or additional information.

FOR SALE

1900 ABBOTT ST, SUITE 102 · CHARLOTTE, NC 28203 · +/- 1,825 SF

Stephen Bollier

COMMERCIAL REAL ESTATE



(310)704-2547



steve@nvlgp.com