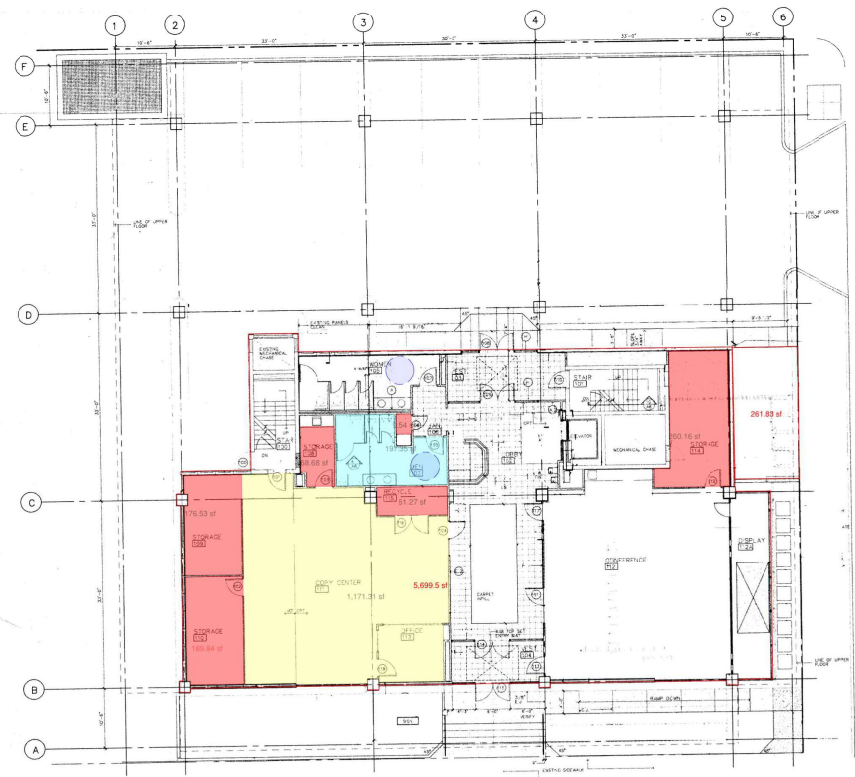


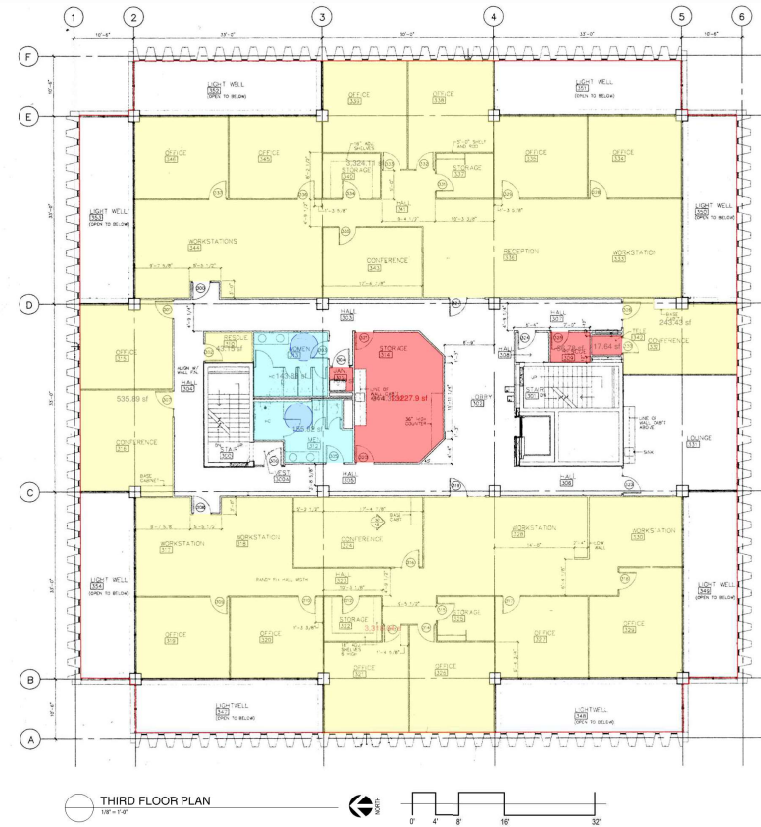
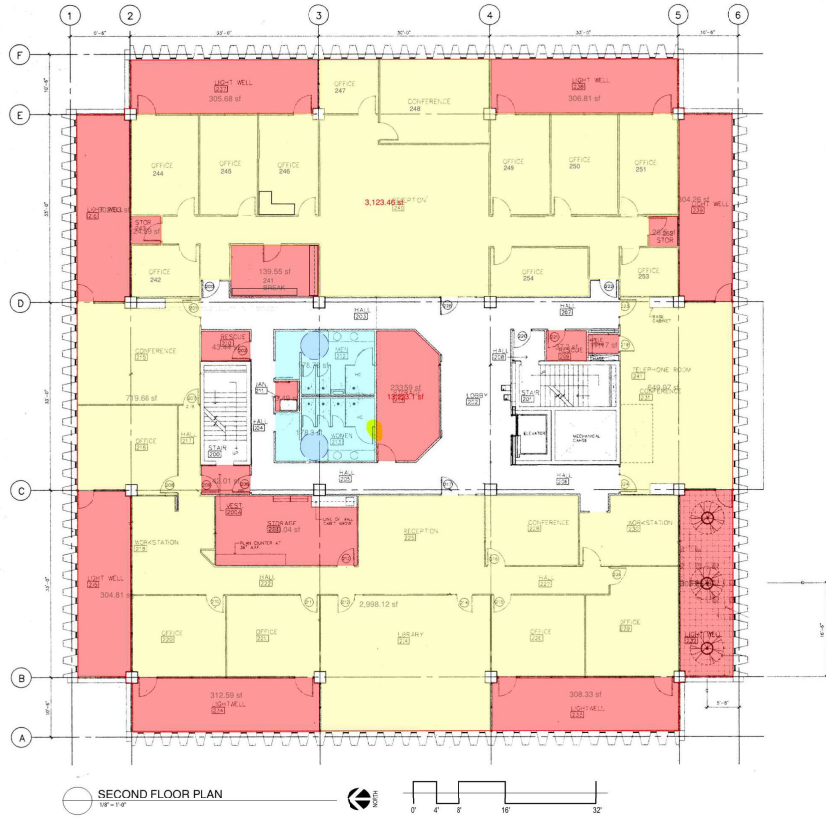
BASEMENT PLAN  
1/8" = 1'-0"

- LEGEND
- VCT
  - CARPET
  - RESTROOM TILE
  - GRAVEL ROOF



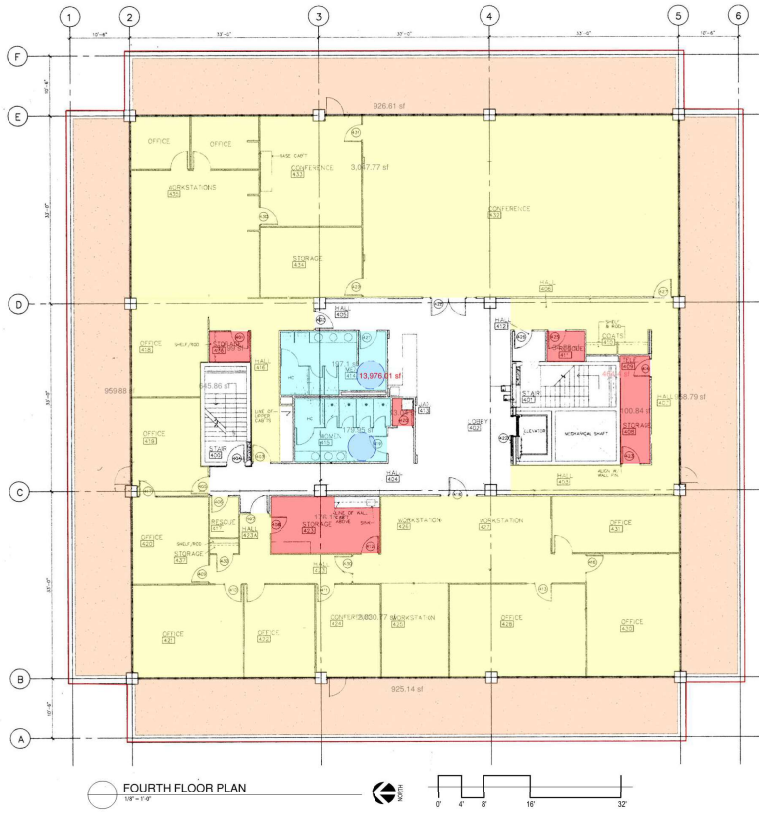
FIRST FLOOR PLAN  
1/8" = 1'-0"

# BASEMENT & FIRST FLOOR PLANS

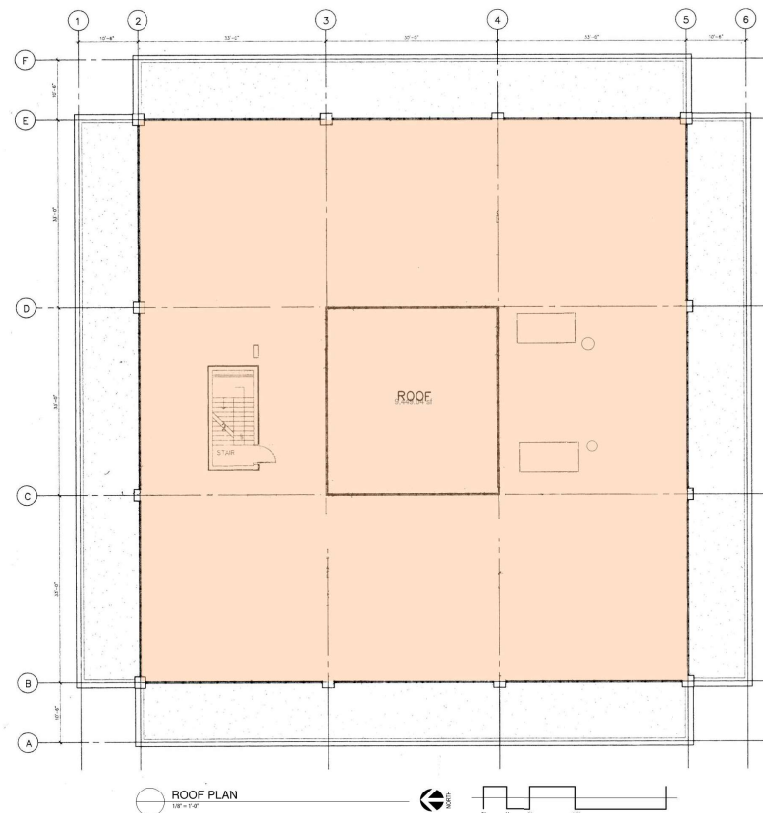


**THIRD FLOOR**  
 $301 + 110 + 14 + 49 + 14 + 13 + 13 + 13 + 13 + 19 + 16 + 107 + 43 + 14 + 14 + 14 + 14 + 13 + 13 + 19 = 825$  ft  
 $926 \text{ ft} \times 2$  (sides of wall) = 1652ft  
 $1652 \text{ ft} \times 9 \text{ft}$  (Floor to ceiling height) = 14868 ft<sup>2</sup>  
**Painted Wall Area:** 14868 square feet:

## SECOND & THIRD FLOOR PLANS



**GROSS FLOOR AREA:**  
 $1065 + 5700 + 13223 + 13228 + 13976 = 47192$   
**Gross Floor Area: 47192 square feet**



**ROOF AREA:**  
 $9449 + 925 + 925 + 960 + 960 = 13219$   
**Total Roof Area: 13219 square feet**

## FOURTH FLOOR PLAN & ROOF PLAN