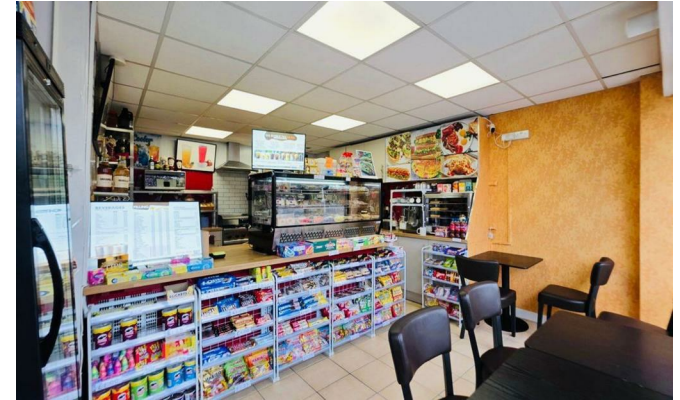


HS HAIR & SON



21 Rayleigh Road, Leigh-On-Sea, Essex, SS9 5UU
Trading Business For Sale - Premium £65,000 Required
£5,250 Per Annum

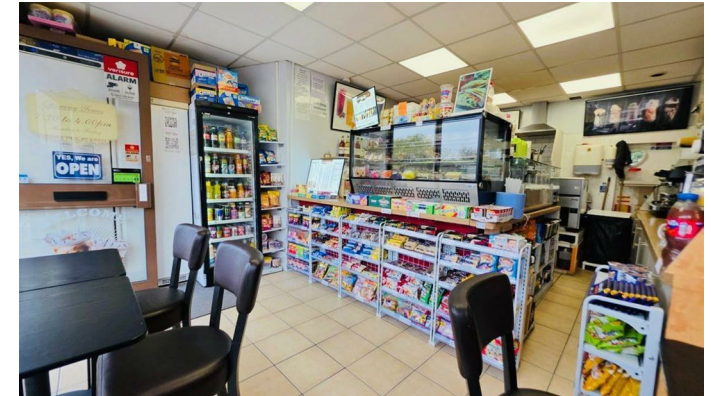
- Class E User Class
- No Restriction On Trading Hours
- Current Turnover In The Region Of £100,000 Per Annum
- Close Proximity to Eastwood Academy High School
- Well Established Business For Sale

The property is located on the south side of Rayleigh Road within an established retail parade, a short distance from Kent Elms Corner and close to Eastwood High School.. The premises is trading as a cafe/bubble tea business and has been under our client's proprietorship for about two years. The business currently trades Monday to Friday from 7.30 a.m. and is closed a weekends (the lease contains no restriction to trade 7 days a week. .

There is currently an arrangement in place with Eastwood High School where pupils are permitted to leave their mobile phones for safe storage during the school day - an average of 50 students a day do this at a cost of 50p. per pupil per day.
It is for sale with all equipment in place and an inventory of equipment will be provided on sale of the business.

The premises is operated as a cafe and sandwich bar, with bubble tea.

TURNOVER IN THE REGION £100K PER ANNUM



More energy efficient

A+

A 0-25

B 26-50

C 51-75

D 76-100

E 101-125

F 126-150

G Over 150

Less energy efficient

Net zero CO₂ emissions

47 This is how energy efficient the building is.

Commercial Office

190 London Road, Southend-On-Sea,
Essex, SS1 1PJ

Contact

01702 394959

<https://hairandson.co.uk/>

Agents Note: Whilst every care has been taken to prepare these particulars, they are for guidance purposes only. All measurements are approximate and for general guidance purposes only and whilst every care has been taken to ensure accuracy, they should not be relied upon and potential buyers/tenants are advised to recheck the measurements.