

**±5,175 SF FLEX SPACE
AVAILABLE FOR SUBLEASE**

8340 CAMINO SANTA FE, SUITE F
SAN DIEGO, CA 92121

LIMITED TIME PROMO!

**\$1.00/SF NNN for First 6
Months of Lease Term***

*(**\$1.74/SF NNN FOR MONTHS 6-12**)

8340

GREG MARX, SIOR
Senior Vice President
Lic.# 01940696
858.458.3302
gmarx@voitco.com

CARTER SHANNON
Associate
Lic.# 02244724
858.458.3303
cshannon@voitco.com

Voit
REAL ESTATE SERVICES



LIMITED TIME PROMO!
\$1.00/SF NNN for First 6 Months of Lease Term*
 *(\$1.74/SF NNN FOR MONTHS 6-12)

PROPERTY FEATURES

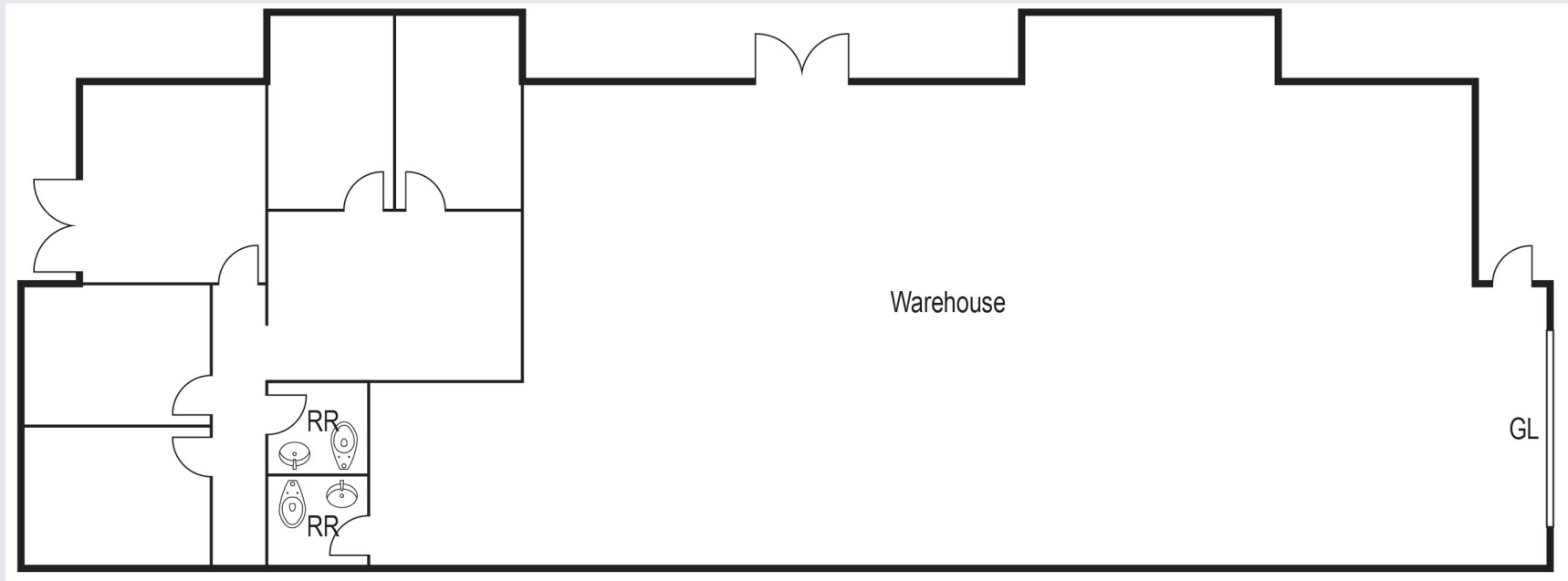
BUILDING SIZE	±27,914 Square Feet
AVAILABLE SIZE	±5,175 Square Feet
LOT SIZE	±2.11 Acres
CLEAR HEIGHT	20' - 22'
PARKING RATIO	1.43/1,000 SF
YEAR BUILT	1989
POWER (SUITE F)	200a/120 - 208v 3p (Subtenant to verify)
ZONING	IL-2-1



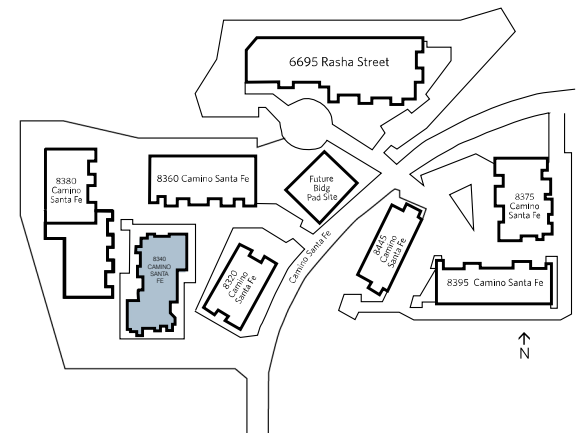
±5,175 SQUARE FEET
 SUITE F

\$1.00 NNN (NNN'S = ±\$0.52/SF)
 SUBLEASE PROMO RATE

MARCH 31, 2029
 LEASE EXPIRATION



±5,175 SQUARE FEET
SUITE F





GREG MARX, SIOR
 Senior Vice President
 Lic.# 01940696
 858.458.3302
 gmarx@voitco.com

CARTER SHANNON
 Associate
 Lic.# 02244724
 858.458.3303
 cshannon@voitco.com

Voit
 REAL ESTATE SERVICES

4180 La Jolla Village Drive, Suite 100, La Jolla, CA 92037 | 858.453.0505 | Lic.#01991785 | www.voitco.com

Licensed as Real Estate Salespersons by the DRE. The information contained herein has been obtained from sources we deem reliable. While we have no reason to doubt its accuracy, we do not guarantee it. ©2026 Voit Real Estate Services, Inc. All Rights Reserved.