

**FOR LEASE**

# MEDICAL OFFICES IN MESA, AZ @ Broadway East Medical Center

7525 E Broadway Rd | Mesa, AZ 8508

**MATT ZACCARDI**  
D: 480.966.7625  
M: 602.561.1339  
mzaccardi@cpiaz.com

**KATY HAUG**  
D: 480.623.2328  
M: 816.808.7347  
khaug@cpiaz.com



**COMMERCIAL PROPERTIES INC.**

Locally Owned, Globally Connected. CORFAC

TEMPE: 2323 W. University Drive, Tempe, AZ 85281 | 480.966.2301  
SCOTTSDALE: 8777 N. Gainey Center Dr., Suite 245, Scottsdale, AZ 85258 | www.cpiaz.com



# About the Property

**ADDRESS**

7525 E Broadway Rd  
Mesa, AZ 85208

**LEASE RATE**

\$16.95 NNN

**NNN'S**

\$4.25/SF

**YEAR BUILT**

1997

**PARKING RATIO**

6.34:1,000

**FRONTAGE**

E Broadway Rd

**PARCEL**

218-58-480

**TENANCY**

Multiple

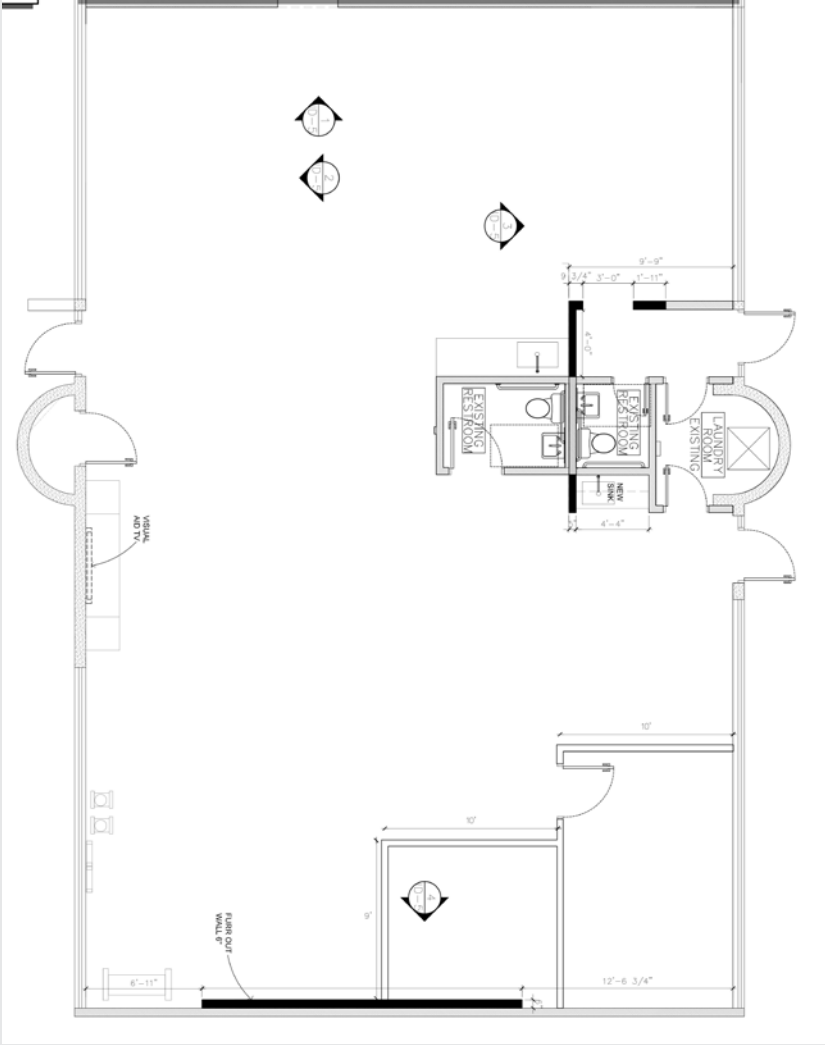
# Suite 5

±2,449 SF

## Prior Physical Therapy Clinic

Layout includes:

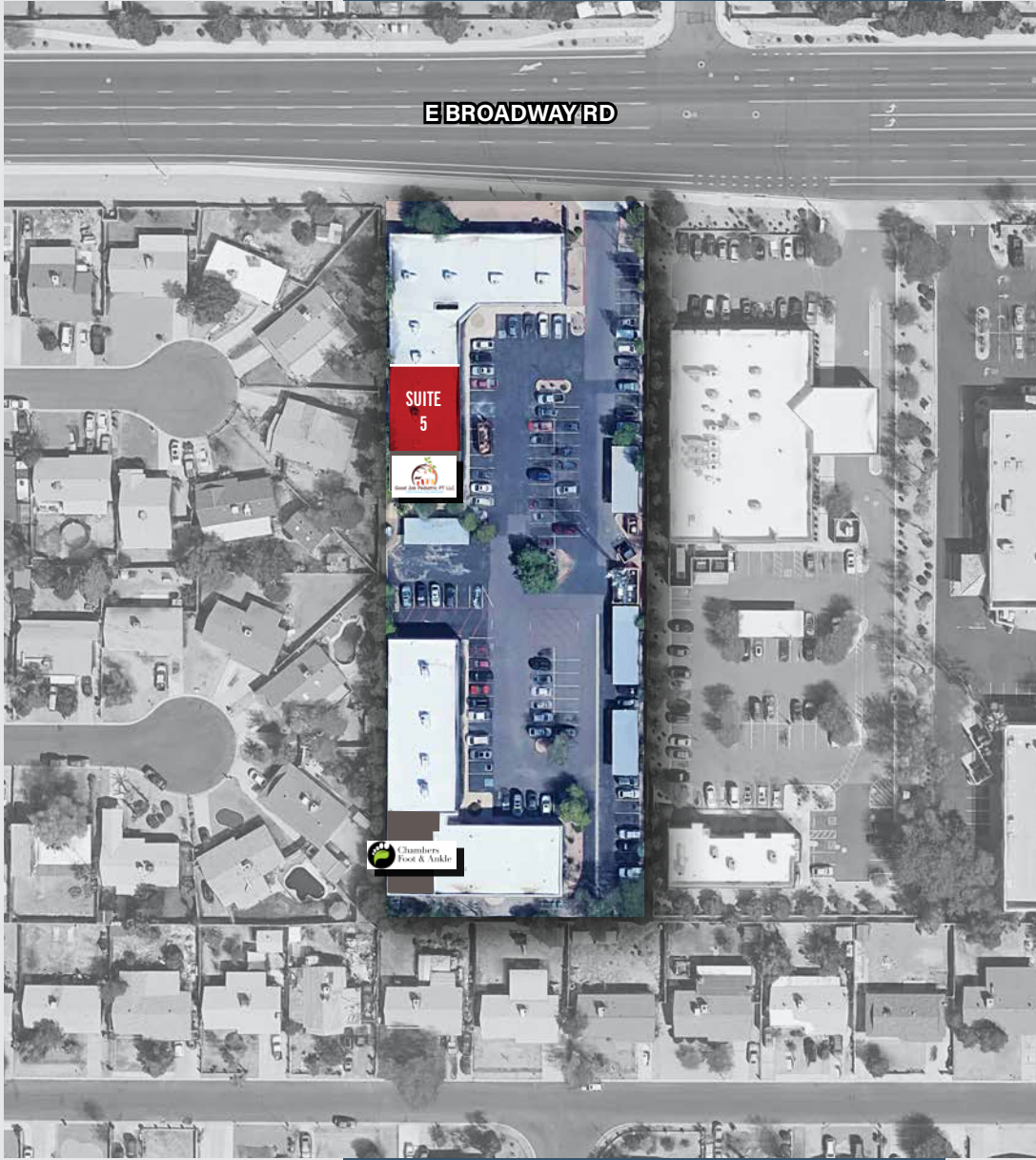
- 2 Offices/Exam Rooms
- Open Therapy Area
- 2 Restrooms



The information contained herein has been obtained from various sources. We have no reason to doubt its accuracy; however, J & J Commercial Properties, Inc. has not verified such information and makes no guarantee, warranty or representation about such information. The prospective buyer or lessee should independently verify all dimensions, specifications, floor plans, and all information prior to the lease or purchase of the property. All offerings are subject to prior sale, lease, or withdrawal from the market without prior notice.

MEDICAL OFFICES AVAILABLE FOR LEASE

# Site Plan



# Tenants



## Arizona Pain & Spine Institute

Suite 1

A leading medical practice specializing in interventional pain management for chronic and spine-related conditions. Utilizing advanced, minimally invasive treatments, they are an established destination for pain relief with a strong patient draw from across the region.

<https://gotpainarizona.com/>



## Intra Care Family Medicine

Suite 2

A long-standing primary care practice with over two decades of service to the East Valley. As part of the IntraCare network, they provide comprehensive family medicine, making them a stable, foundational tenant.

[theintracare.com](http://theintracare.com)



## MV Headache & Spine Institute

Suite 3/4

A highly specialized clinic focused on treating chronic headaches, migraines, and complex spine disorders. Offering cutting-edge, personalized therapies, the institute serves as a vital referral center for physicians, ensuring a consistent and targeted patient base.

[mountainviewheadacheandspine.com](http://mountainviewheadacheandspine.com)



## Hearing Solutions of Arizona

Suite 7

An established audiology practice providing comprehensive hearing healthcare, from diagnostics to advanced hearing aid technology. As a trusted local leader, they serve a growing demographic with essential, life-enhancing auditory health services.

[hearingsolutionsofarizona.com](http://hearingsolutionsofarizona.com)



## Allied Medical Associates

Suite 8/9

An established internal medicine practice with deep roots in the East Valley, known for its comprehensive adult patient care. Their respected local presence makes them a trusted and foundational tenant for the complex.

[alliedmedical.com](http://alliedmedical.com)

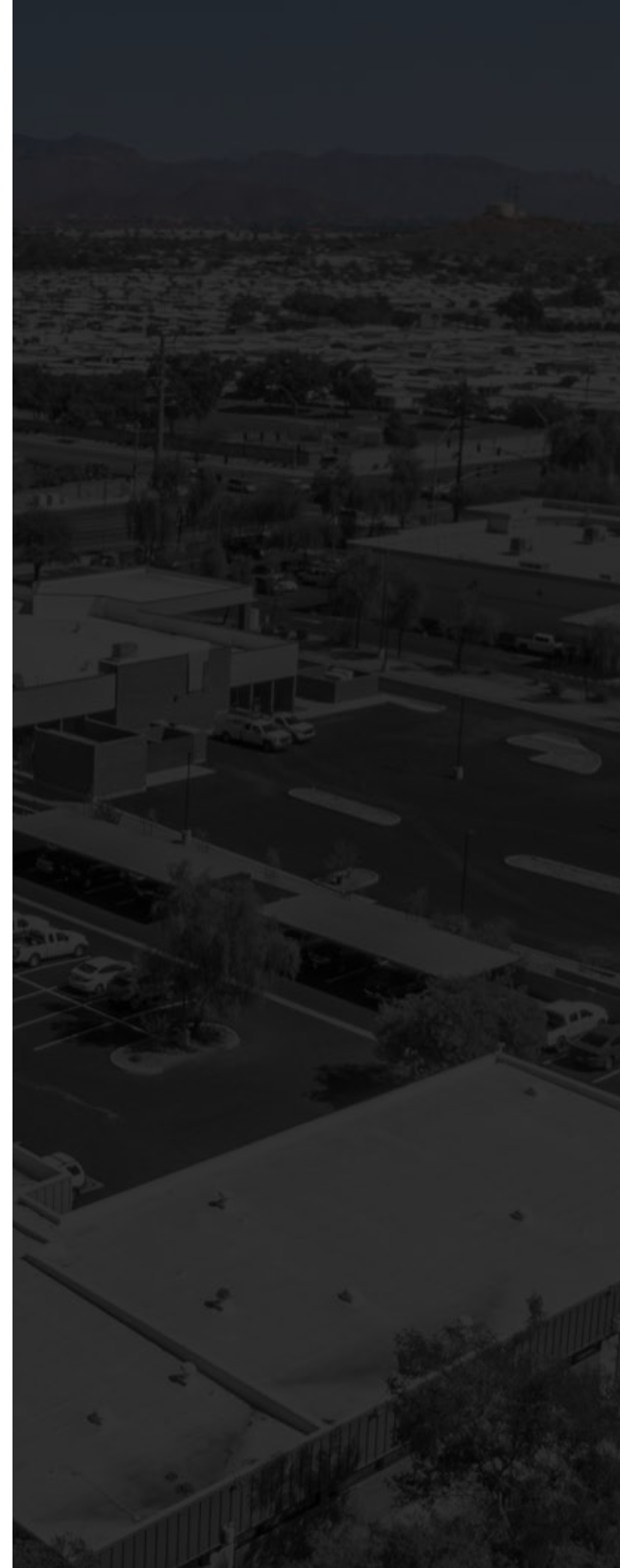


## Southwest Cardio Vascular Associates

Suite 11

A leading multi-physician cardiology group providing advanced, full-spectrum cardiovascular care. As a vital referral center for area hospitals and physicians, they represent a high-value and stable medical tenant.

[swcva.com](http://swcva.com)



MEDICAL OFFICES AVAILABLE FOR LEASE

# Aerial Map



BANNER HEART HOSPITAL  
& BANNER BAYWOOD  
MEDICAL CENTER



**DRIVE TIME**

TO BANNER HEART  
HOSPITAL/BANNER  
BAYWOOD MEDICAL CENTER      1.3 Mi or 5 Min

**SITE**



POWER RD

E BROADWAY RD

S SOSSAMAN RD

# About the Area

